

Product Datasheet

beta I Tubulin Antibody (OTI4A3) NBP2-46245

Unit Size: 0.1 ml

Store at -20C. Avoid freeze-thaw cycles.

www.novusbio.com



technical@novusbio.com

Publications: 1

Protocols, Publications, Related Products, Reviews, Research Tools and Images at:
www.novusbio.com/NBP2-46245

Updated 9/9/2025 v.20.1

Earn rewards for product
reviews and publications.

Submit a publication at www.novusbio.com/publications

Submit a review at www.novusbio.com/reviews/destination/NBP2-46245



NBP2-46245

beta I Tubulin Antibody (OTI4A3)

Product Information	
Unit Size	0.1 ml
Concentration	1 mg/ml
Storage	Store at -20C. Avoid freeze-thaw cycles.
Clonality	Monoclonal
Clone	OTI4A3
Preservative	0.02% Sodium Azide
Isotype	IgG2a
Purity	Immunogen affinity purified
Buffer	PBS (pH 7.3), 1.0% BSA and 50% Glycerol
Target Molecular Weight	50.1 kDa

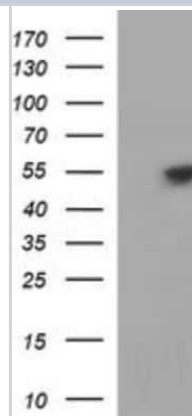
Product Description	
Description	Novus Biologicals Mouse beta I Tubulin Antibody (OTI4A3) (NBP2-46245) is a monoclonal antibody validated for use in IHC, WB and ICC/IF. Anti-beta I Tubulin Antibody: Cited in 1 publication. All Novus Biologicals antibodies are covered by our 100% guarantee.
Host	Mouse
Gene ID	81027
Gene Symbol	TUBB1
Species	Human, Mouse, Rat, Canine, Monkey
Reactivity Notes	Please note that this antibody is reactive to Mouse and derived from the same host, Mouse. Mouse-On-Mouse blocking reagent may be needed for IHC and ICC experiments to reduce high background signal. You can find these reagents under catalog numbers PK-2200-NB and MP-2400-NB. Please contact Technical Support if you have any questions.
Immunogen	Full length human recombinant protein of human TUBB1(NP_110400) produced in HEK293T cell.

Product Application Details	
Applications	Western Blot, Immunohistochemistry-Paraffin, Immunocytochemistry/Immunofluorescence, Immunohistochemistry
Recommended Dilutions	Western Blot 1:200-2000, Immunohistochemistry 1:150, Immunocytochemistry/Immunofluorescence 1:100, Immunohistochemistry-Paraffin

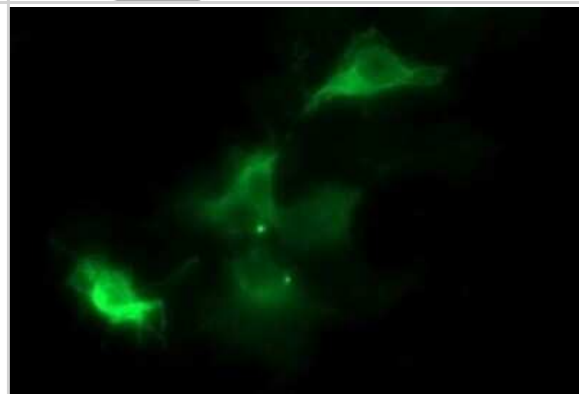


Images

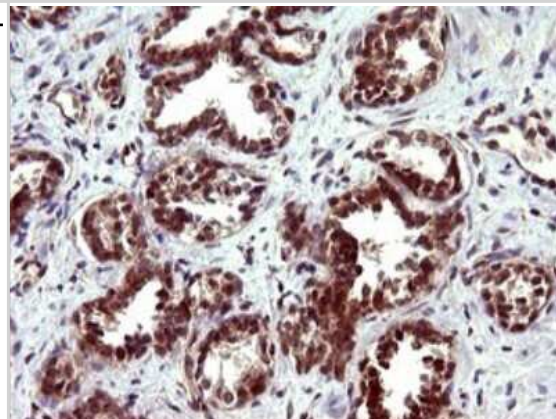
Western Blot: beta I Tubulin Antibody (OTI4A3) [NBP2-46245] - Analysis of HEK293T cells were transfected with the pCMV6-ENTRY control (Left lane) or pCMV6-ENTRY beta 1 Tubulin.



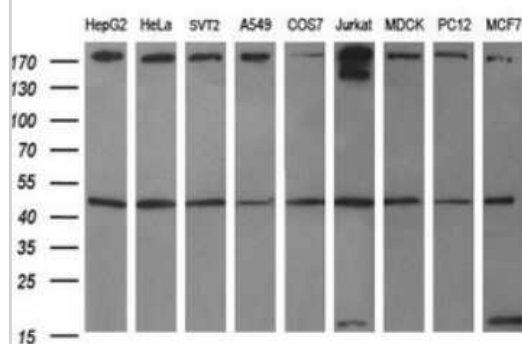
Immunocytochemistry/Immunofluorescence: beta I Tubulin Antibody (OTI4A3) [NBP2-46245] - Analysis of COS7 cells transiently transfected by pCMV6-ENTRY beta I Tubulin.



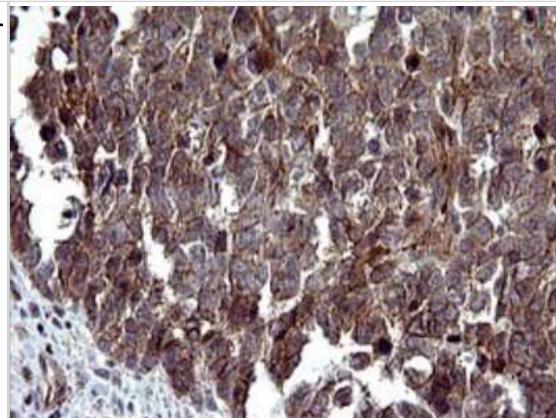
Immunohistochemistry: beta I Tubulin Antibody (OTI4A3) [NBP2-46245] - Analysis of Carcinoma of Human prostate tissue. (Heat-induced epitope retrieval by 10mM citric buffer, pH6.0, 120C for 3min)



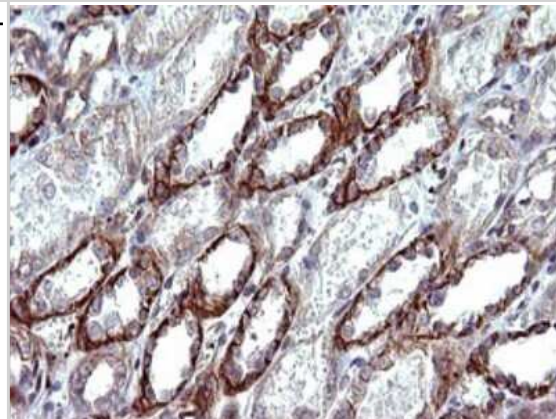
Western Blot: beta I Tubulin Antibody (OTI4A3) [NBP2-46245] - Analysis of extracts (35ug) from 9 different cell lines (HepG2: human; HeLa: human; SVT2: mouse; A549: human; COS7: monkey; Jurkat: human; MDCK: canine; PC12: rat; MCF7: human).



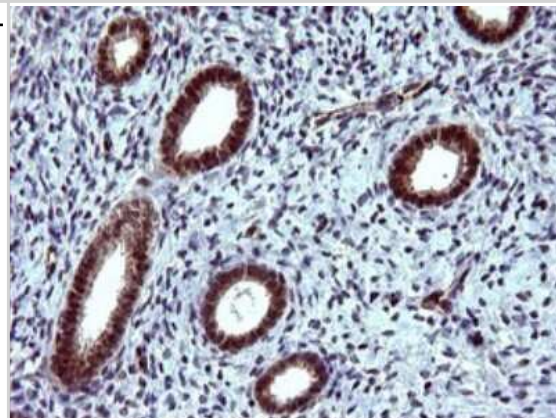
Immunohistochemistry: beta I Tubulin Antibody (OTI4A3) [NBP2-46245] - Analysis of Adenocarcinoma of Human colon tissue. (Heat-induced epitope retrieval by 10mM citric buffer, pH6.0, 120C for 3min)



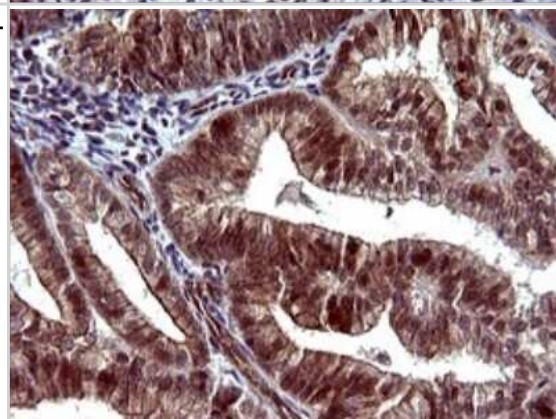
Immunohistochemistry: beta I Tubulin Antibody (OTI4A3) [NBP2-46245] - Analysis of Human Kidney tissue. (Heat-induced epitope retrieval by 10mM citric buffer, pH6.0, 120C for 3min)



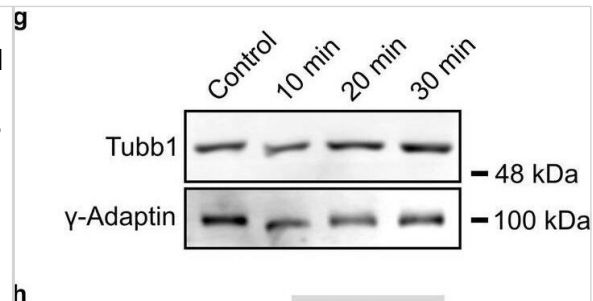
Immunohistochemistry: beta I Tubulin Antibody (OTI4A3) [NBP2-46245] - Analysis of Human endometrium tissue. (Heat-induced epitope retrieval by 10mM citric buffer, pH6.0, 120C for 3min)



Immunohistochemistry: beta I Tubulin Antibody (OTI4A3) [NBP2-46245] - Analysis of Adenocarcinoma of Human endometrium tissue. (Heat-induced epitope retrieval by 10mM citric buffer, pH6.0, 120C for 3min)



Microtubule growth and tubulin expression following cLTP induction. a Live cell imaging of DIV 11/12 cultured hippocampal neurons transfected with EB3-Tomato and exposed to chemical induction of LTP. To induce cLTP, neurons transfected at DIV8-9 were subjected to cLTP induction 3 days post transfection. cLTP was induced by treatment with 50 μ M Forskolin, 100 nM Rolipram and 100 μ M Picrotoxin for 10 min in Ringer solution without Mg^{2+} , following 10 min of recovery in Ringer solution containing Mg^{2+} . Control cells were kept in Ringer solution containing Mg^{2+} . Image acquisition: 1 frame/s over 3 min. Scale bar, 20 μ m. EB3 comets in axonal segments in colored boxes of overview images (top panel) are visualized by kymographs (bottom panel). b Quantification of a, depicting median values (N = 3 experiments). *** $p < 0.001$. Each data point represents one EB3 comet; control (n = 54), cLTP (n = 70). For graphical representation of the distribution, data are binned with a bin size of 0.02 μ m/s. Statistics: Mann–Whitney Rank Sum Test. c–j Quantification of tubulin isotype expression in acute hippocampal slices, following chemical induction of LTP. Control slices were kept in ACSF. cLTP slices were incubated in ACSF with TEA for 10 min and further incubated in pure ACSF over 0, 10 or 20 min. (gamma-Adaptin: loading control; N = 3 experiments, each). Representative western blots and the corresponding quantification of (c, d) pan-Tuba, (e, f) pan-Tubb, (g, h) Tubb1 and (i, j) Tubb3. Depicted are median values. Black dots show the mean value. For graphical representation of the distribution, data are binned with a bin size of 0.05 a.u. Statistics: One way ANOVA followed by Student's t-test or Mann–Whitney Rank Sum Test. * $p < 0.05$, ** $p < 0.01$ Image collected and cropped by CiteAb from the following open publication (<https://pubmed.ncbi.nlm.nih.gov/36309617>), licensed under a CC-BY license. Not internally tested by Novus Biologicals.



Publications

Hausrat TJ, Radwitz J, Lombino FL et al. Alpha- and beta-tubulin isotypes are differentially expressed during brain development Dev Neurobiol 2020-04-15 [PMID: 32293117] (WB, Human)



Novus Biologicals USA

10730 E. Briarwood Avenue
Centennial, CO 80112
USA
Phone: 303.730.1950
Toll Free: 1.888.506.6887
Fax: 303.730.1966
nb-customerservice@bio-techne.com

Bio-Techne Canada

21 Canmotor Ave
Toronto, ON M8Z 4E6
Canada
Phone: 905.827.6400
Toll Free: 855.668.8722
Fax: 905.827.6402
canada.inquires@bio-techne.com

Bio-Techne Ltd

19 Barton Lane
Abingdon Science Park
Abingdon, OX14 3NB, United Kingdom
Phone: (44) (0) 1235 529449
Free Phone: 0800 37 34 15
Fax: (44) (0) 1235 533420
info.EMEA@bio-techne.com

General Contact Information

www.novusbio.com
Technical Support: nb-technical@bio-techne.com
Orders: nb-customerservice@bio-techne.com
General: novus@novusbio.com

Products Related to NBP2-46245

NBP2-33376H	Blue Marker Antibody (6F4-F6) [HRP]
HAF007	Goat anti-Mouse IgG Secondary Antibody [HRP]
NB7539	Goat anti-Mouse IgG (H+L) Secondary Antibody [HRP]
NBP1-96778	Mouse IgG2a Isotype Control (M2A)

Limitations

This product is for research use only and is not approved for use in humans or in clinical diagnosis. Primary Antibodies are guaranteed for 1 year from date of receipt.

For more information on our 100% guarantee, please visit www.novusbio.com/guarantee

Earn gift cards/discounts by submitting a review: www.novusbio.com/reviews/submit/NBP2-46245

Earn gift cards/discounts by submitting a publication using this product:
www.novusbio.com/publications

