

# Product Datasheet

## Indoleamine 2,3-dioxygenase/IDO Antibody (OTI2B5) NBP2-46020

Unit Size: 0.1 ml

Store at -20C. Avoid freeze-thaw cycles.

[www.novusbio.com](http://www.novusbio.com)



[technical@novusbio.com](mailto:technical@novusbio.com)

Protocols, Publications, Related Products, Reviews, Research Tools and Images at:  
[www.novusbio.com/NBP2-46020](http://www.novusbio.com/NBP2-46020)

Updated 10/23/2024 v.20.1

Earn rewards for product  
reviews and publications.

Submit a publication at [www.novusbio.com/publications](http://www.novusbio.com/publications)

Submit a review at [www.novusbio.com/reviews/destination/NBP2-46020](http://www.novusbio.com/reviews/destination/NBP2-46020)



**NBP2-46020**

Indoleamine 2,3-dioxygenase/IDO Antibody (OTI2B5)

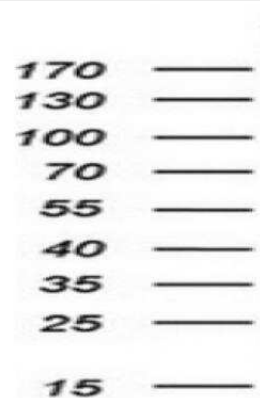
Product Information	
Unit Size	0.1 ml
Concentration	1 mg/ml
Storage	Store at -20C. Avoid freeze-thaw cycles.
Clonality	Monoclonal
Clone	OTI2B5
Preservative	0.02% Sodium Azide
Isotype	IgG1
Purity	Immunogen affinity purified
Buffer	PBS (pH 7.3), 1.0% BSA and 50% Glycerol
Target Molecular Weight	45.1 kDa

Product Description	
Host	Mouse
Gene ID	3620
Gene Symbol	IDO1
Species	Human
Immunogen	Full length human recombinant protein of human IDO1(NP_002155) produced in HEK293T cell.

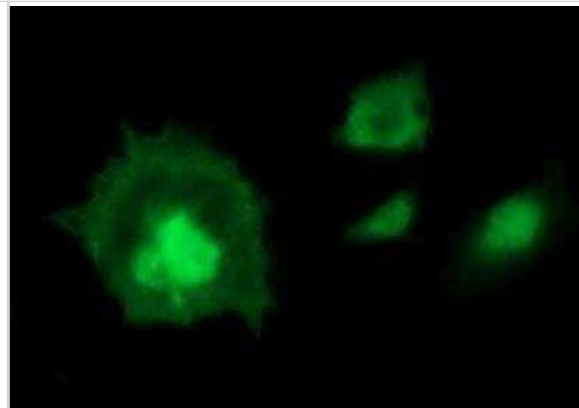
Product Application Details	
Applications	Western Blot, Immunocytochemistry/ Immunofluorescence, Immunohistochemistry, Immunohistochemistry-Paraffin
Recommended Dilutions	Western Blot 1:4000, Immunohistochemistry 1:150, Immunocytochemistry/ Immunofluorescence 1:100, Immunohistochemistry-Paraffin 1:150
Application Notes	WB application notes: for overexpressing samples up to a 1:4000 dilution can be used. For detecting endogenous protein, a starting dilution of 1:200 will be necessary.

**Images**

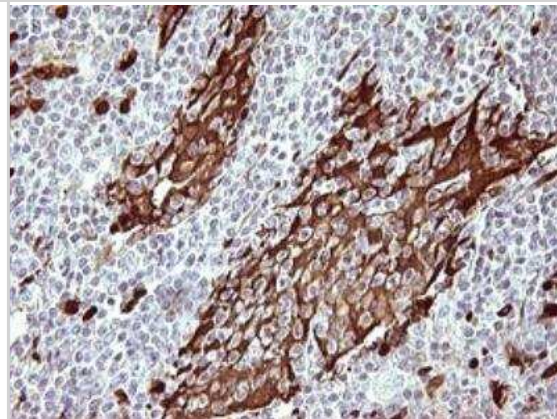
Western Blot: Indoleamine 2,3-dioxygenase/IDO Antibody (2B5) [NBP2-46020] - Analysis of extracts (10ug) from 2 different cell lines by using anti-IDO1 monoclonal antibody at 1:200.



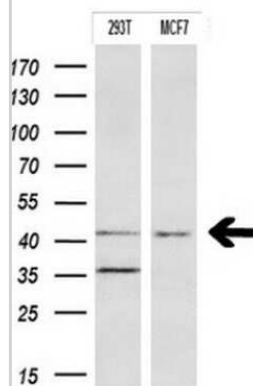
Immunocytochemistry/Immunofluorescence: Indoleamine 2,3-dioxygenase/IDO Antibody (2B5) [NBP2-46020] - Analysis of COS7 cells transiently transfected by pCMV6-ENTRY IDO1.



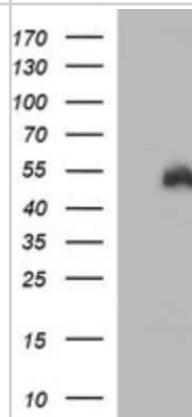
Immunohistochemistry-Paraffin: Indoleamine 2,3-dioxygenase/IDO Antibody (2B5) [NBP2-46020] - Staining of paraffin-embedded Human lymphoma tissue using anti-IDO1 mouse monoclonal antibody. (Heat-induced epitope retrieval by 10mM citric buffer, pH6.0, 120C for 3min.



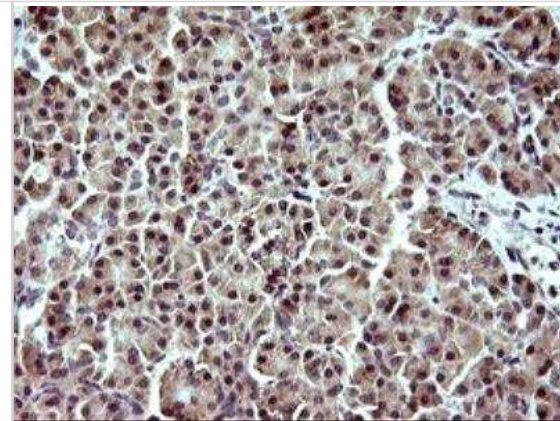
Western Blot: Indoleamine 2,3-dioxygenase/IDO Antibody (2B5) [NBP2-46020] - Analysis of extracts (10ug) from 2 different cell lines.



Western Blot: Indoleamine 2,3-dioxygenase/IDO Antibody (2B5) [NBP2-46020] - Analysis of HEK293T cells were transfected with the pCMV6-ENTRY control (Left lane) or pCMV6-ENTRY IDO.



Immunohistochemistry-Paraffin: Indoleamine 2,3-dioxygenase/IDO Antibody (2B5) [NBP2-46020] - Staining of paraffin-embedded Human pancreas tissue within the normal limits using anti-IDO1 mouse monoclonal antibody. (Heat-induced epitope retrieval by 10mM citric buffer, pH6.0, 120C for 3min.





### **Novus Biologicals USA**

10730 E. Briarwood Avenue  
Centennial, CO 80112  
USA  
Phone: 303.730.1950  
Toll Free: 1.888.506.6887  
Fax: 303.730.1966  
nb-customerservice@bio-techne.com

### **Bio-Techne Canada**

21 Canmotor Ave  
Toronto, ON M8Z 4E6  
Canada  
Phone: 905.827.6400  
Toll Free: 855.668.8722  
Fax: 905.827.6402  
canada.inquires@bio-techne.com

### **Bio-Techne Ltd**

19 Barton Lane  
Abingdon Science Park  
Abingdon, OX14 3NB, United Kingdom  
Phone: (44) (0) 1235 529449  
Free Phone: 0800 37 34 15  
Fax: (44) (0) 1235 533420  
info.EMEA@bio-techne.com

### **General Contact Information**

[www.novusbio.com](http://www.novusbio.com)  
Technical Support: nb-technical@bio-techne.com  
Orders: nb-customerservice@bio-techne.com  
General: novus@novusbio.com

### **Products Related to NBP2-46020**

---

HAF007	Goat anti-Mouse IgG Secondary Antibody [HRP]
NB720-B	Rabbit anti-Mouse IgG (H+L) Secondary Antibody [Biotin]
NBP1-97005-0.5mg	Mouse IgG1 Isotype Control (MG1)
NBP2-51723-0.1mg	Recombinant Human Indoleamine 2,3-dioxygenase/IDO His Protein

---

### **Limitations**

This product is for research use only and is not approved for use in humans or in clinical diagnosis. Primary Antibodies are guaranteed for 1 year from date of receipt.

For more information on our 100% guarantee, please visit [www.novusbio.com/guarantee](http://www.novusbio.com/guarantee)

Earn gift cards/discounts by submitting a review: [www.novusbio.com/reviews/submit/NBP2-46020](http://www.novusbio.com/reviews/submit/NBP2-46020)

Earn gift cards/discounts by submitting a publication using this product:  
[www.novusbio.com/publications](http://www.novusbio.com/publications)

