

Product Datasheet

Mcl-1 Antibody (OTI10F6) NBP2-45773

Unit Size: 0.1 ml

Store at -20C. Avoid freeze-thaw cycles.

www.novusbio.com



technical@novusbio.com

Protocols, Publications, Related Products, Reviews, Research Tools and Images at:
www.novusbio.com/NBP2-45773

Updated 6/1/2021 v.20.1

Earn rewards for product
reviews and publications.

Submit a publication at www.novusbio.com/publications

Submit a review at www.novusbio.com/reviews/destination/NBP2-45773



NBP2-45773

Mcl-1 Antibody (OTI10F6)

Product Information

Unit Size	0.1 ml
Concentration	1 mg/ml
Storage	Store at -20C. Avoid freeze-thaw cycles.
Clonality	Monoclonal
Clone	OTI10F6
Preservative	0.02% Sodium Azide
Isotype	IgG1
Purity	Immunogen affinity purified
Buffer	PBS (pH 7.3), 1.0% BSA and 50% Glycerol
Target Molecular Weight	37.3 kDa

Product Description

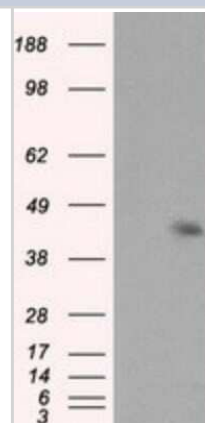
Host	Mouse
Gene ID	4170
Gene Symbol	MCL1
Species	Human
Immunogen	Full length human recombinant protein of human MCL1 (NP_068779) produced in HEK293T cell.

Product Application Details

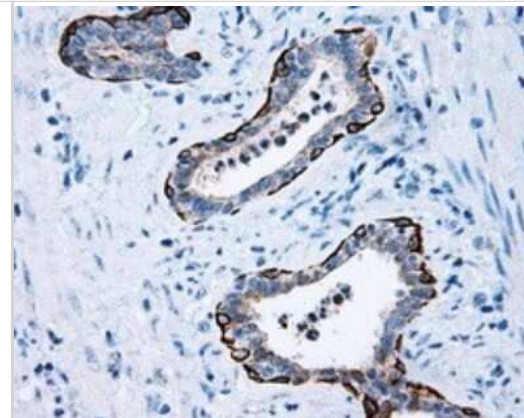
Applications	Western Blot, Flow Cytometry, Immunocytochemistry/ Immunofluorescence, Immunohistochemistry, Immunohistochemistry-Paraffin, Immunofluorescence
Recommended Dilutions	Western Blot 1:200 - 1:1000, Flow Cytometry 1:100, Immunohistochemistry 1:50, Immunocytochemistry/ Immunofluorescence 1:100, Immunohistochemistry-Paraffin 1:50, Immunofluorescence 1:100

Images

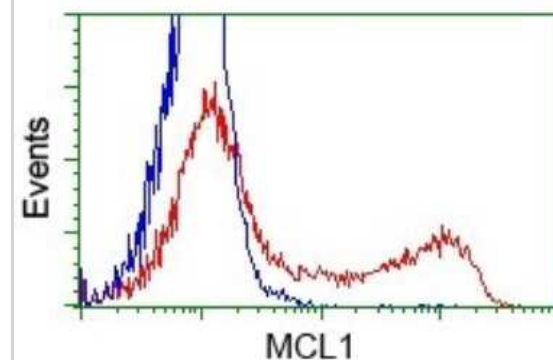
Western Blot: Mcl-1 Antibody (OTI10F6) [NBP2-45773] - Analysis of HEK293T cells were transfected with the pCMV6-ENTRY control (Left lane) or pCMV6-ENTRY MCL-1.



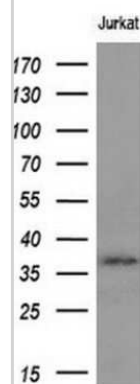
Immunohistochemistry: Mcl-1 Antibody (OTI10F6) [NBP2-45773] - Analysis of Carcinoma of prostate tissue.



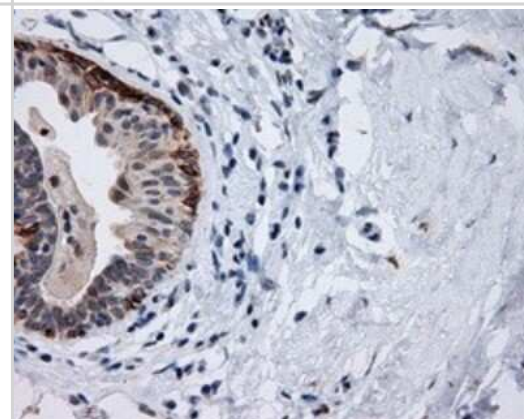
Flow Cytometry: Mcl-1 Antibody (OTI10F6) [NBP2-45773] - Analysis of HEK293T cells transfected with either pCMV6-ENTRY MCL1.



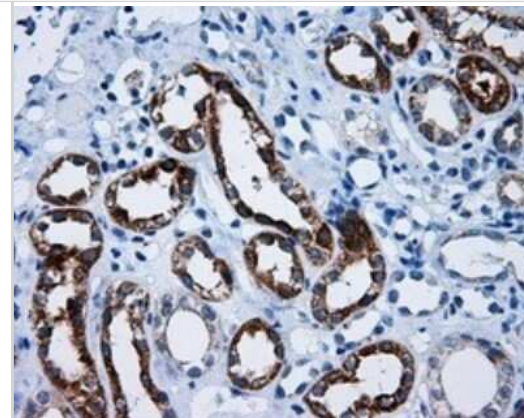
Western Blot: Mcl-1 Antibody (OTI10F6) [NBP2-45773] - Analysis of extracts (10ug).



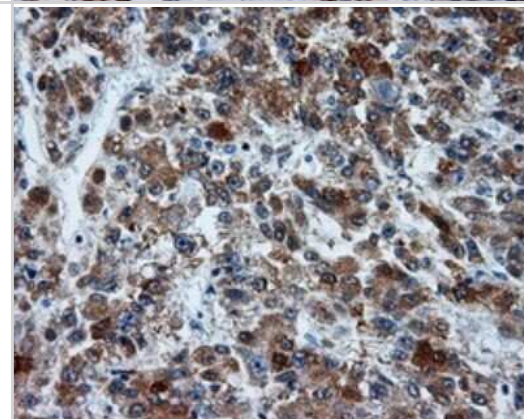
Immunohistochemistry: Mcl-1 Antibody (OTI10F6) [NBP2-45773] - Analysis of breast tissue.



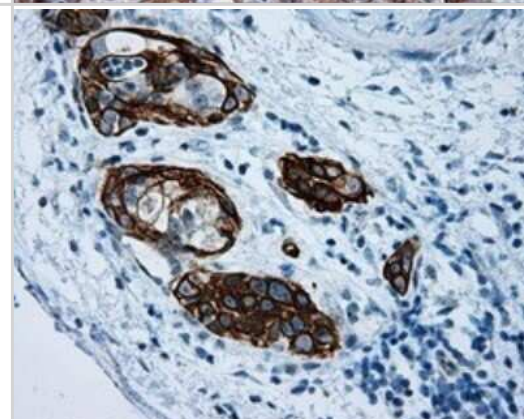
Immunohistochemistry: Mcl-1 Antibody (OTI10F6) [NBP2-45773] -
Analysis of Kidney tissue within the normal limits.



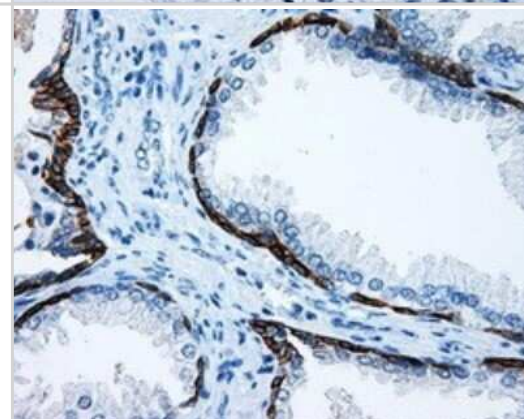
Immunohistochemistry: Mcl-1 Antibody (OTI10F6) [NBP2-45773] -
Analysis of Carcinoma of liver tissue.



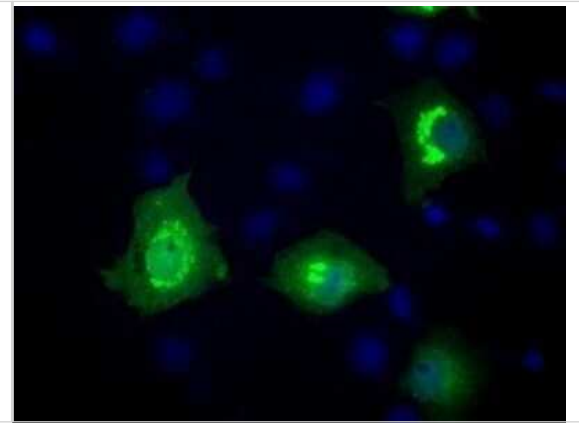
Immunohistochemistry: Mcl-1 Antibody (OTI10F6) [NBP2-45773] -
Analysis of Carcinoma of pancreas tissue.



Immunohistochemistry: Mcl-1 Antibody (OTI10F6) [NBP2-45773] -
Analysis of prostate tissue.



Immunofluorescence: Mcl-1 Antibody (OTI10F6) [NBP2-45773] - Analysis of COS7 cells transiently transfected by pCMV6-ENTRY MCL-1.





Novus Biologicals USA

10730 E. Briarwood Avenue
Centennial, CO 80112
USA
Phone: 303.730.1950
Toll Free: 1.888.506.6887
Fax: 303.730.1966
nb-customerservice@bio-techne.com

Bio-Techne Canada

21 Canmotor Ave
Toronto, ON M8Z 4E6
Canada
Phone: 905.827.6400
Toll Free: 855.668.8722
Fax: 905.827.6402
canada.inquires@bio-techne.com

Bio-Techne Ltd

19 Barton Lane
Abingdon Science Park
Abingdon, OX14 3NB, United Kingdom
Phone: (44) (0) 1235 529449
Free Phone: 0800 37 34 15
Fax: (44) (0) 1235 533420
info.EMEA@bio-techne.com

General Contact Information

www.novusbio.com
Technical Support: nb-technical@bio-techne.com
Orders: nb-customerservice@bio-techne.com
General: novus@novusbio.com

Products Related to NBP2-45773

HAF007	Goat anti-Mouse IgG Secondary Antibody [HRP]
NB720-B	Rabbit anti-Mouse IgG (H+L) Secondary Antibody [Biotin]
NBP1-97005-0.5mg	Mouse IgG1 Isotype Control (MG1)
NB100-56146PEP	Mcl-1 Antibody Blocking Peptide

Limitations

This product is for research use only and is not approved for use in humans or in clinical diagnosis. Primary Antibodies are guaranteed for 1 year from date of receipt.

For more information on our 100% guarantee, please visit www.novusbio.com/guarantee

Earn gift cards/discounts by submitting a review: www.novusbio.com/reviews/submit/NBP2-45773

Earn gift cards/discounts by submitting a publication using this product:
www.novusbio.com/publications

