

# Product Datasheet

## KRAS Antibody (OTI2C1) NBP2-45536

Unit Size: 0.1 ml

Store at -20C. Avoid freeze-thaw cycles.

[www.novusbio.com](http://www.novusbio.com)



[technical@novusbio.com](mailto:technical@novusbio.com)

### Publications: 2

Protocols, Publications, Related Products, Reviews, Research Tools and Images at:  
[www.novusbio.com/NBP2-45536](http://www.novusbio.com/NBP2-45536)

Updated 1/2/2023 v.20.1

Earn rewards for product  
reviews and publications.

Submit a publication at [www.novusbio.com/publications](http://www.novusbio.com/publications)

Submit a review at [www.novusbio.com/reviews/destination/NBP2-45536](http://www.novusbio.com/reviews/destination/NBP2-45536)



**NBP2-45536**

KRAS Antibody (OTI2C1)

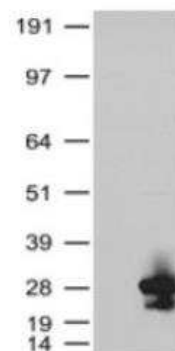
Product Information	
Unit Size	0.1 ml
Concentration	1 mg/ml
Storage	Store at -20C. Avoid freeze-thaw cycles.
Clonality	Monoclonal
Clone	OTI2C1
Preservative	0.02% Sodium Azide
Isotype	IgG2b
Purity	Immunogen affinity purified
Buffer	PBS (pH 7.3), 1.0% BSA and 50% Glycerol
Target Molecular Weight	21.5 kDa

Product Description	
Host	Mouse
Gene ID	3845
Gene Symbol	KRAS
Species	Human, Mouse, Rat, Canine, Monkey
Reactivity Notes	Please note that this antibody is reactive to Mouse and derived from the same host, Mouse. Mouse-On-Mouse blocking reagent may be needed for IHC and ICC experiments to reduce high background signal. You can find these reagents under catalog numbers PK-2200-NB and MP-2400-NB. Please contact Technical Support if you have any questions.
Immunogen	Full length human recombinant protein of human KRAS (NP_203524) produced in E.coli.

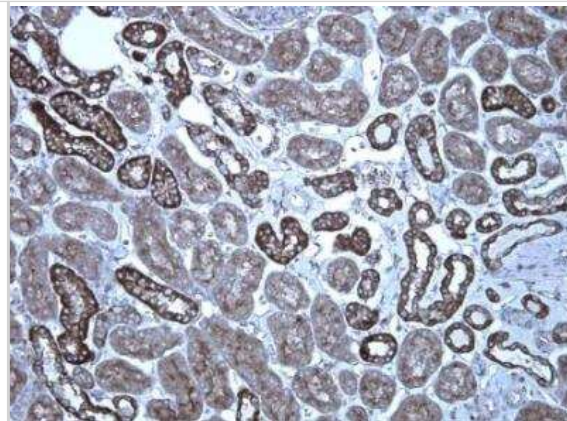
Product Application Details	
Applications	Western Blot, Immunohistochemistry, Immunohistochemistry-Paraffin
Recommended Dilutions	Western Blot 1:2000, Immunohistochemistry 1:100, Immunohistochemistry-Paraffin 1:100

**Images**

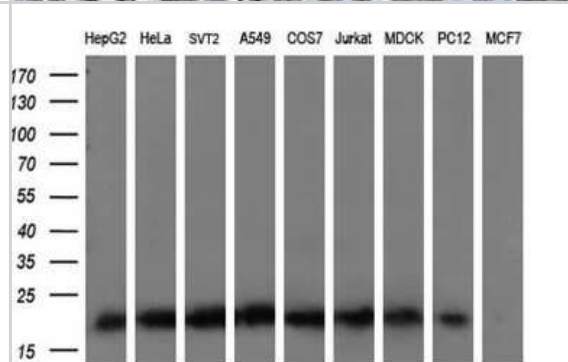
Western Blot: KRAS Antibody (OTI2C1) [NBP2-45536] - HEK293T cells were transfected with the pCMV6-ENTRY control (Left lane) or pCMV6-ENTRY KRAS ( Right lane) cDNA for 48 hrs and lysed. Equivalent amounts of cell lysates (5 ug per lane) were separated by SDS-PAGE and immunoblotted with anti-KRAS. Positive lysates LY409579 (100ug) and LC409579 (20ug).



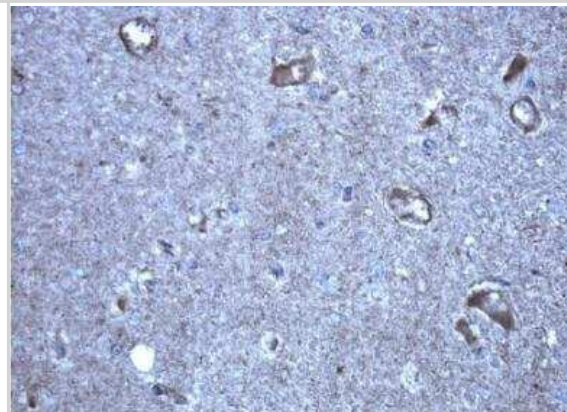
**Immunohistochemistry-Paraffin: KRAS Antibody (OTI2C1) [NBP2-45536]**  
 - Staining of paraffin-embedded human normal kidney using anti-KRAS clone OTI2C1 mouse monoclonal antibody @ 1:100 with D12-18 Polink1 anti-Ms HRP DAB detection kit. NBP2-45536 tissue screen used heat-induced epitope retrieval buffer ACCEL, pH8.7 in pressure cooker. Results show mostly cytoplasmic staining.



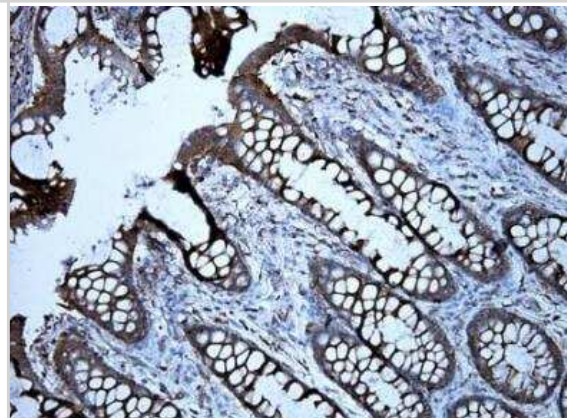
**Western Blot: KRAS Antibody (OTI2C1) [NBP2-45536]** - Analysis of extracts (35ug) from 9 different cell lines (HepG2: human; HeLa: human; SVT2: mouse; A549: human; COS7: monkey; Jurkat: human; MDCK: canine; PC12: rat; MCF7: human).



**Immunohistochemistry-Paraffin: KRAS Antibody (OTI2C1) [NBP2-45536]**  
 - Staining of human normal brain using anti-KRAS clone OTI2C1 mouse monoclonal antibody @ 1:100 with D12-18 Polink1 anti-Ms HRP DAB detection kit. NBP2-45536 tissue screen used heat-induced epitope retrieval buffer ACCEL, pH8.7 in pressure cooker. Results show nuclear and cytoplasmic staining.



**Immunohistochemistry-Paraffin: KRAS Antibody (OTI2C1) [NBP2-45536]**  
 - Staining of human normal colon using anti-KRAS clone OTI2C1 mouse monoclonal antibody @ 1:100 with D12-18 Polink1 anti-Ms HRP DAB detection kit. NBP2-45536 tissue screen used heat-induced epitope retrieval buffer ACCEL, pH8.7 in pressure cooker. Results show nuclear and cytoplasmic staining.



Immunohistochemistry-Paraffin: KRAS Antibody (OTI2C1) [NBP2-45536]  
- Staining of human normal brain using anti-KRAS clone OTI2C1 mouse monoclonal antibody @ 1:100 with D12-18 Polink1 anti-Ms HRP DAB detection kit. NBP2-45536 tissue screen used heat-induced epitope retrieval buffer ACCEL, pH8.7 in pressure cooker. Results show nuclear and cytoplasmic staining.



## Publications

Wang D, Wang Q, Wang Y et al. Targeting oncogenic KRAS with molecular brush-conjugated antisense oligonucleotides Proceedings of the National Academy of Sciences of the United States of America 2022-07-19 [PMID: 35858356]

Wang Y, Wang D, Jia F et al. Self-Assembled DNA-PEG Bottlebrushes Enhance Antisense Activity and Pharmacokinetics of Oligonucleotides ACS Appl Mater Interfaces 2020-09-30 [PMID: 32936615]



### **Novus Biologicals USA**

10730 E. Briarwood Avenue  
Centennial, CO 80112  
USA  
Phone: 303.730.1950  
Toll Free: 1.888.506.6887  
Fax: 303.730.1966  
nb-customerservice@bio-techne.com

### **Bio-Techne Canada**

21 Canmotor Ave  
Toronto, ON M8Z 4E6  
Canada  
Phone: 905.827.6400  
Toll Free: 855.668.8722  
Fax: 905.827.6402  
canada.inquires@bio-techne.com

### **Bio-Techne Ltd**

19 Barton Lane  
Abingdon Science Park  
Abingdon, OX14 3NB, United Kingdom  
Phone: (44) (0) 1235 529449  
Free Phone: 0800 37 34 15  
Fax: (44) (0) 1235 533420  
info.EMEA@bio-techne.com

### **General Contact Information**

www.novusbio.com  
Technical Support: nb-technical@bio-techne.com  
Orders: nb-customerservice@bio-techne.com  
General: novus@novusbio.com

### **Products Related to NBP2-45536**

---

HAF007	Goat anti-Mouse IgG Secondary Antibody [HRP]
NB720-B	Rabbit anti-Mouse IgG (H+L) Secondary Antibody [Biotin]
NBP2-27231	Mouse IgG2b Isotype Control (MPC-11)
H00003845-P01-10ug	Recombinant Human KRAS GST (N-Term) Protein

---

### **Limitations**

This product is for research use only and is not approved for use in humans or in clinical diagnosis. Primary Antibodies are guaranteed for 1 year from date of receipt.

For more information on our 100% guarantee, please visit [www.novusbio.com/guarantee](http://www.novusbio.com/guarantee)

Earn gift cards/discounts by submitting a review: [www.novusbio.com/reviews/submit/NBP2-45536](http://www.novusbio.com/reviews/submit/NBP2-45536)

Earn gift cards/discounts by submitting a publication using this product:  
[www.novusbio.com/publications](http://www.novusbio.com/publications)

