

# Product Datasheet

## HLA DRB1 Antibody (HLA-DRB/1067)

### NBP2-45314-0.1mg

Unit Size: 0.1 mg

Store at 4C.

[www.novusbio.com](http://www.novusbio.com)



[technical@novusbio.com](mailto:technical@novusbio.com)

Protocols, Publications, Related Products, Reviews, Research Tools and Images at:  
[www.novusbio.com/NBP2-45314](http://www.novusbio.com/NBP2-45314)

Updated 10/23/2024 v.20.1

Earn rewards for product  
reviews and publications.

Submit a publication at [www.novusbio.com/publications](http://www.novusbio.com/publications)

Submit a review at [www.novusbio.com/reviews/destination/NBP2-45314](http://www.novusbio.com/reviews/destination/NBP2-45314)



**NBP2-45314-0.1mg**

HLA-DRB1 Antibody (HLA-DRB/1067)

Product Information	
Unit Size	0.1 mg
Concentration	0.2 mg/ml
Storage	Store at 4C.
Clonality	Monoclonal
Clone	HLA-DRB/1067
Preservative	0.05% Sodium Azide
Isotype	IgG2b Kappa
Purity	Protein A or G purified
Buffer	10 mM PBS with 0.05% BSA
Product Description	
Description	<p>200ug/ml of antibody purified from Bioreactor Concentrate by Protein A or G. Prepared in 10 mM PBS with 0.05% BSA &amp; 0.05% azide. Also available WITHOUT BSA &amp; azide at 1.0 mg/ml. (NBP2-47671)</p> <p>Antibody with azide - store at 2 to 8C. Antibody without azide - store at -20 to -80C.</p>
Host	Mouse
Gene ID	3123
Gene Symbol	HLA-DRB1
Species	Human, Monkey
Specificity/Sensitivity	<p>This monoclonal antibody reacts with the beta-chain of HLA-DRB1 antigen, a member of MHC class II molecules. It does not cross react with HLA-DP and HLA-DQ. Its epitope is different from that of monoclonal antibody L243. HLA-DR is a heterodimeric cell surface glycoprotein comprised of a 36kDa alpha (heavy) chain and a 28kDa beta (light) chain. It is expressed on B-cells, activated T-cells, monocytes/macrophages, dendritic cells and other non-professional APCs. In conjunction with the CD3/TCR complex and CD4 molecules, HLA-DR is critical for efficient peptide presentation to CD4+ T cells. It is an excellent histiocytic marker in paraffin sections producing intense cytoplasmic staining. True histiocytic neoplasms are similarly positive. HLA-DR antigens also occur on a variety of epithelial cells and their corresponding neoplastic counterparts. Loss of HLA-DR expression is related to tumor microenvironment and predicts adverse outcome in diffuse large B-cell lymphoma.</p>
Immunogen	Activated human peripheral blood mononuclear cells
Product Application Details	
Applications	Western Blot, Flow Cytometry, Immunocytochemistry/ Immunofluorescence, Immunohistochemistry, Immunohistochemistry-Paraffin, Immunofluorescence
Recommended Dilutions	Western Blot 1-2 ug/ml, Flow Cytometry 1-2 ug/million cells, Immunohistochemistry, Immunocytochemistry/ Immunofluorescence 1-4 ug/ml, Immunohistochemistry-Paraffin 0.25-0.5 ug/ml, Immunofluorescence 0.5 - 1.0 ug/ml

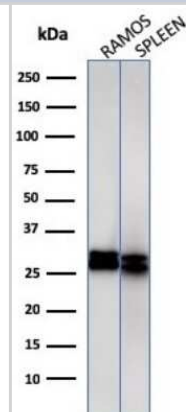


**Application Notes**

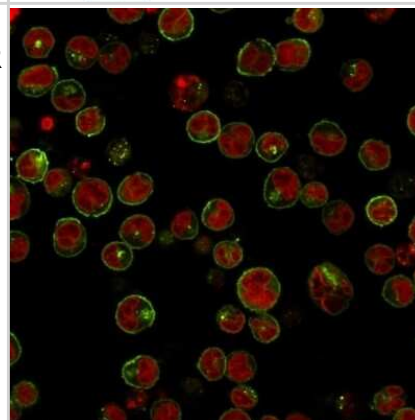
Immunohistochemistry (Formalin-fixed): 0.25-0.5ug/ml for 30 minutes at RT. Staining of formalin-fixed tissues requires heating tissue sections in 10mM Tris with 1mM EDTA, pH 9.0, for 45 min at 95C followed by cooling at RT for 20 minutes.  
Optimal dilution for a specific application should be determined.

**Images**

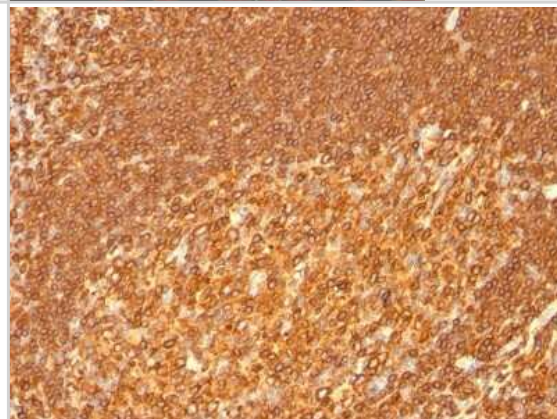
Western Blot: HLA DRB1 Antibody (HLA-DRB/1067) [NBP2-45314] - Western Blot Analysis of Ramos cell and human spleen tissue lysate using HLA DRB1 Antibody (HLA-DRB/1067).



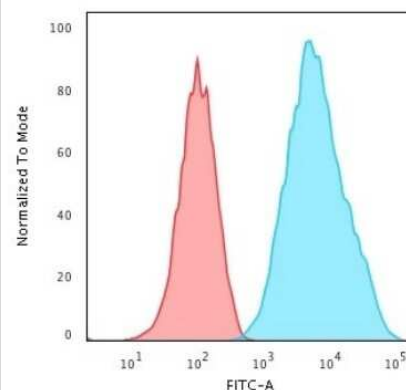
Immunocytochemistry/Immunofluorescence: HLA DRB1 Antibody (HLA-DRB/1067) [NBP2-45314] - ICC/IF analysis of Raji cells labeling HLA-DR with conjugated with APC (Green). The nuclear counterstain is Red Dot (Red)



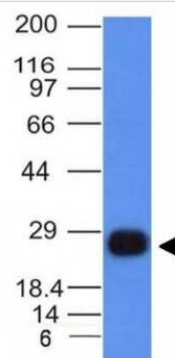
Immunohistochemistry-Paraffin: HLA DRB1 Antibody (HLA-DRB/1067) [NBP2-45314] - Human Tonsil stained with HLA-DRB Monoclonal Antibody (HLA-DRB/1067).



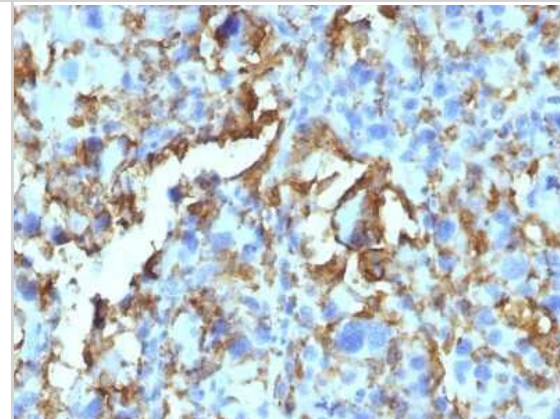
Flow Cytometry: HLA DRB1 Antibody (HLA-DRB/1067) [NBP2-45314] - Flow Cytometric Analysis of human Raji cells using HLA DRB1 Antibody (HLA-DRB/1067). followed by Goat anti-Mouse IgG-CF488 (Blue); Isotype Control (Red).



Western Blot: HLA DRB1 Antibody (HLA-DRB/1067) [NBP2-45314] - Analysis of Ramos Cell Lysate using HLA-DRB Monoclonal Antibody (HLA-DRB/1067).



Immunohistochemistry-Paraffin: HLA DRB1 Antibody (HLA-DRB/1067) [NBP2-45314] - Human Histiocytoma stained with HLA-DRB Monoclonal Antibody (HLA-DRB/1067).





### **Novus Biologicals USA**

10730 E. Briarwood Avenue  
Centennial, CO 80112  
USA  
Phone: 303.730.1950  
Toll Free: 1.888.506.6887  
Fax: 303.730.1966  
nb-customerservice@bio-techne.com

### **Bio-Techne Canada**

21 Canmotor Ave  
Toronto, ON M8Z 4E6  
Canada  
Phone: 905.827.6400  
Toll Free: 855.668.8722  
Fax: 905.827.6402  
canada.inquires@bio-techne.com

### **Bio-Techne Ltd**

19 Barton Lane  
Abingdon Science Park  
Abingdon, OX14 3NB, United Kingdom  
Phone: (44) (0) 1235 529449  
Free Phone: 0800 37 34 15  
Fax: (44) (0) 1235 533420  
info.EMEA@bio-techne.com

### **General Contact Information**

www.novusbio.com  
Technical Support: nb-technical@bio-techne.com  
Orders: nb-customerservice@bio-techne.com  
General: novus@novusbio.com

### **Products Related to NBP2-45314-0.1mg**

---

HAF007	Goat anti-Mouse IgG Secondary Antibody [HRP]
NB720-B	Rabbit anti-Mouse IgG (H+L) Secondary Antibody [Biotin]
NBP1-43317-0.5mg	Mouse IgG2b Kappa Light Chain Isotype Control (MG2b)
NBP2-51599-0.1mg	Recombinant Human, HLA DRB1 His Protein

---

### **Limitations**

This product is for research use only and is not approved for use in humans or in clinical diagnosis. Primary Antibodies are guaranteed for 1 year from date of receipt.

For more information on our 100% guarantee, please visit [www.novusbio.com/guarantee](http://www.novusbio.com/guarantee)

Earn gift cards/discounts by submitting a review: [www.novusbio.com/reviews/submit/NBP2-45314](http://www.novusbio.com/reviews/submit/NBP2-45314)

Earn gift cards/discounts by submitting a publication using this product:  
[www.novusbio.com/publications](http://www.novusbio.com/publications)

