

# Product Datasheet

## Mitochondria Antibody (113-1) - IHC-Prediluted NBP2-45195

Unit Size: 7 ml

Store at 4C.

[www.novusbio.com](http://www.novusbio.com)



[technical@novusbio.com](mailto:technical@novusbio.com)

Protocols, Publications, Related Products, Reviews, Research Tools and Images at:  
[www.novusbio.com/NBP2-45195](http://www.novusbio.com/NBP2-45195)

Updated 10/23/2024 v.20.1

Earn rewards for product  
reviews and publications.

Submit a publication at [www.novusbio.com/publications](http://www.novusbio.com/publications)

Submit a review at [www.novusbio.com/reviews/destination/NBP2-45195](http://www.novusbio.com/reviews/destination/NBP2-45195)

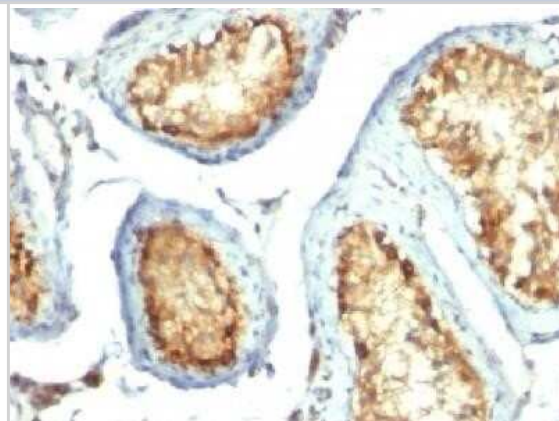


**NBP2-45195****Mitochondria Antibody (113-1) - IHC-Prediluted**

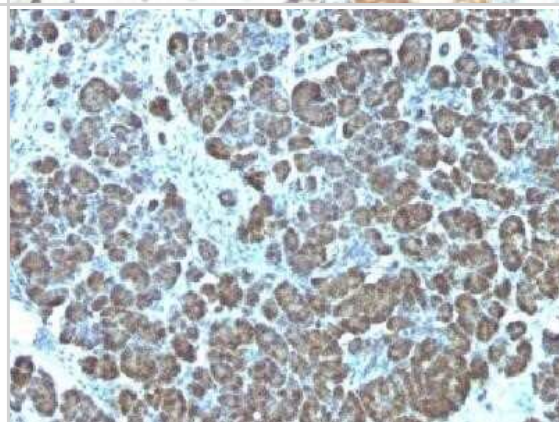
<b>Product Information</b>	
<b>Unit Size</b>	7 ml
<b>Concentration</b>	Please see the vial label for concentration. If unlisted please contact technical services.
<b>Storage</b>	Store at 4C.
<b>Clonality</b>	Monoclonal
<b>Clone</b>	113-1
<b>Preservative</b>	0.05% Sodium Azide
<b>Isotype</b>	IgG1 Kappa
<b>Purity</b>	Protein A or G purified
<b>Buffer</b>	10 mM PBS with 0.05% BSA
<b>Target Molecular Weight</b>	60 kDa
<b>Product Description</b>	
<b>Description</b>	The prediluted antibody does not require any mixing, dilution, reconstitution, or titration; the antibody is ready-to-use and optimized for staining.
<b>Host</b>	Mouse
<b>Species</b>	Human, Mouse (Negative), Rat (Negative)
<b>Reactivity Notes</b>	Does not react with Mouse or Rat.
<b>Marker</b>	Marker for Human Cells, Granular RCC s & Salivary Tumor
<b>Specificity/Sensitivity</b>	This monoclonal antibody recognizes a 60kDa antigen associated with the mitochondria in human cells. It can be used to stain mitochondria in cell or tissue preparations and can be used as a mitochondrial marker in subcellular fractions. It produces a spaghetti-like pattern in normal and malignant cells. This antibody is an excellent marker for human cells in xenographic model research. It reacts specifically with human cells, including neurons and embryonic stem cells. Immunostaining pattern with anti-mitochondrial monoclonal antibody has been reported as a useful discriminatory adjunct in the complex differential diagnosis of granular renal cell tumors. Reportedly, this monoclonal antibody facilitates the classification of salivary tumors.
<b>Immunogen</b>	Semi-Purified mitochondrial preparation
<b>Product Application Details</b>	
<b>Applications</b>	Immunohistochemistry, Immunohistochemistry-Frozen, Immunohistochemistry-Paraffin
<b>Recommended Dilutions</b>	Immunohistochemistry, Immunohistochemistry-Paraffin 0.5 - 1.0 ug/ml, Immunohistochemistry-Frozen
<b>Application Notes</b>	Immunohistochemistry (Formalin-fixed): 1-2ug/ml for 30 minutes at RT. Staining of formalin-fixed tissues is enhanced by heating tissue sections in 10mM Tris with 1mM EDTA, pH 9.0, for 45 min at 95C followed by cooling at RT for 20 minutes. Optimal dilution for a specific application should be determined.

## Images

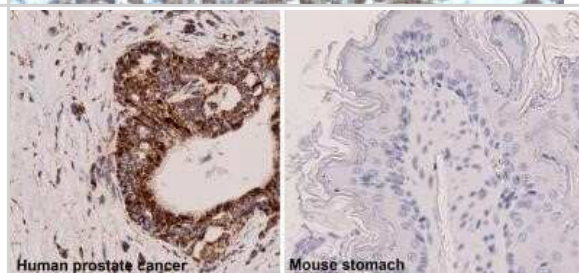
Immunohistochemistry-Paraffin: Mitochondria Antibody (113-1) - IHC-Prediluted [NBP2-45195] - Formalin-fixed, paraffin-embedded human testicular carcinoma stained with mitochondria monoclonal antibody (113-1). Image using the Azide and BSA Free form of this antibody.



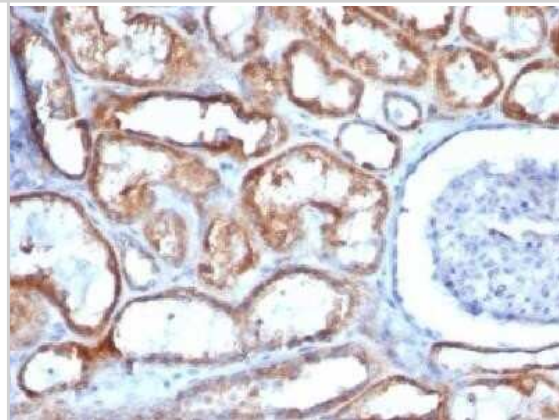
Immunohistochemistry-Paraffin: Mitochondria Antibody (113-1) - IHC-Prediluted [NBP2-45195] - Formalin-fixed paraffin-embedded human pancreas stained with mitochondria monoclonal antibody (113-1). Image using the Azide and BSA Free form of this antibody.



Immunohistochemistry-Paraffin: Mitochondria Antibody (113-1) - IHC-Prediluted [NBP2-45195] - Analysis using the Biotin conjugate of this antibody. Staining of human prostate cancer tissue (left) and mouse stomach tissue (right). Image from verified customer review.



Immunohistochemistry-Paraffin: Mitochondria Antibody (113-1) - IHC-Prediluted [NBP2-45195] - Formalin-fixed paraffin-embedded human Renal cell carcinoma stained with Mitochondria Monoclonal antibody (113-1). Image using the Azide and BSA Free form of this antibody.





### **Novus Biologicals USA**

10730 E. Briarwood Avenue  
Centennial, CO 80112  
USA  
Phone: 303.730.1950  
Toll Free: 1.888.506.6887  
Fax: 303.730.1966  
nb-customerservice@bio-techne.com

### **Bio-Techne Canada**

21 Canmotor Ave  
Toronto, ON M8Z 4E6  
Canada  
Phone: 905.827.6400  
Toll Free: 855.668.8722  
Fax: 905.827.6402  
canada.inquires@bio-techne.com

### **Bio-Techne Ltd**

19 Barton Lane  
Abingdon Science Park  
Abingdon, OX14 3NB, United Kingdom  
Phone: (44) (0) 1235 529449  
Free Phone: 0800 37 34 15  
Fax: (44) (0) 1235 533420  
info.EMEA@bio-techne.com

### **General Contact Information**

www.novusbio.com  
Technical Support: nb-technical@bio-techne.com  
Orders: nb-customerservice@bio-techne.com  
General: novus@novusbio.com

### **Products Related to NBP2-45195**

---

HAF007	Goat anti-Mouse IgG Secondary Antibody [HRP]
NB720-B	Rabbit anti-Mouse IgG (H+L) Secondary Antibody [Biotin]
NBP1-43319-0.5mg	Mouse IgG1 Kappa Isotype Control (P3.6.2.8.1)
NBP2-29448	Mitochondria Isolation Kit

---

### **Limitations**

This product is for research use only and is not approved for use in humans or in clinical diagnosis. Primary Antibodies are guaranteed for 1 year from date of receipt.

For more information on our 100% guarantee, please visit [www.novusbio.com/guarantee](http://www.novusbio.com/guarantee)

Earn gift cards/discounts by submitting a review: [www.novusbio.com/reviews/submit/NBP2-45195](http://www.novusbio.com/reviews/submit/NBP2-45195)

Earn gift cards/discounts by submitting a publication using this product:  
[www.novusbio.com/publications](http://www.novusbio.com/publications)

