

# Product Datasheet

## Golgi Complex Antibody (371-4) - IHC-Prediluted NBP2-45185

Unit Size: 7 ml

Store at 4C.

[www.novusbio.com](http://www.novusbio.com)



[technical@novusbio.com](mailto:technical@novusbio.com)

Protocols, Publications, Related Products, Reviews, Research Tools and Images at:  
[www.novusbio.com/NBP2-45185](http://www.novusbio.com/NBP2-45185)

Updated 10/23/2024 v.20.1

Earn rewards for product  
reviews and publications.

Submit a publication at [www.novusbio.com/publications](http://www.novusbio.com/publications)

Submit a review at [www.novusbio.com/reviews/destination/NBP2-45185](http://www.novusbio.com/reviews/destination/NBP2-45185)



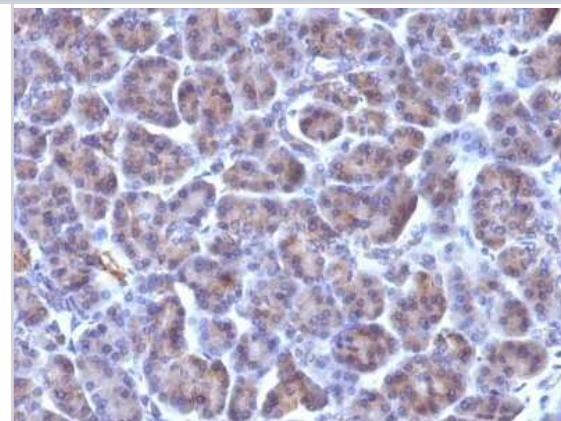
**NBP2-45185****Golgi Complex Antibody (371-4) - IHC-Prediluted**

| <b>Product Information</b>         |   |
|------------------------------------|---|
| <b>Unit Size</b>                   | 7 ml  |
| <b>Concentration</b>               | Please see the vial label for concentration. If unlisted please contact technical services.   |
| <b>Storage</b>                     | Store at 4C.  |
| <b>Clonality</b>                   | Monoclonal  |
| <b>Clone</b>                       | 371-4   |
| <b>Preservative</b>                | 0.05% Sodium Azide  |
| <b>Isotype</b>                     | IgG1 Kappa  |
| <b>Purity</b>                      | Protein A or G purified   |
| <b>Buffer</b>                      | 10 mM PBS with 0.05% BSA  |
| <b>Product Description</b>         |   |
| <b>Description</b>                 | The prediluted antibody does not require any mixing, dilution, reconstitution, or titration; the antibody is ready-to-use and optimized for staining.   |
| <b>Host</b>                        | Mouse   |
| <b>Species</b>                     | Human, Mouse (Negative), Rat (Negative)   |
| <b>Reactivity Notes</b>            | Does not react with Mouse or Rat.   |
| <b>Marker</b>                      | Marker for Human Cells  |
| <b>Specificity/Sensitivity</b>     | This monoclonal antibody recognizes an antigen associated with the Golgi complex in human cells only. It can be used to stain the Golgi complex in cell or tissue preparations and can be used as a Golgi marker in subcellular fractions. It produces a diffuse staining pattern of the Golgi zone in normal and malignant cells. This monoclonal antibody is an excellent marker for human cells in xenographic model research. It reacts specifically with human cells. The Golgi apparatus is an organelle present in all eukaryotic cells that forms a part of the endomembrane system. The primary function of the Golgi apparatus is to process and package macromolecules synthesized by the cell for exocytosis or use within the cell. The Golgi is made up of a stack of flattened, membrane-bound sacs known as cisternae, with three functional regions: the cis face, medial region and trans face. Each region consists of various enzymes that selectively modify the macromolecules passing through them, depending on where they are destined to reside. Several spherical vesicles that have budded off of the Golgi are present surrounding the main cisternae. |
| <b>Immunogen</b>                   | SU-DHL-1 large cell lymphoma cells.   |
| <b>Product Application Details</b> |   |
| <b>Applications</b>                | Immunohistochemistry, Immunohistochemistry-Paraffin   |
| <b>Recommended Dilutions</b>       | Immunohistochemistry, Immunohistochemistry-Paraffin 0.5 - 1.0 ug/ml   |
| <b>Application Notes</b>           | Immunohistochemistry (Formalin-fixed): 1-2ug/ml for 30 minutes at RT. Staining of formalin-fixed tissues requires heating tissue sections in 10mM Tris with 1mM EDTA, pH 9.0, for 45 min at 95C followed by cooling at RT for 20 minutes. Optimal dilution for a specific application should be determined.   |



## Images

Immunohistochemistry-Paraffin: Golgi Complex Antibody (371-4) - IHC-Prediluted [NBP2-45185] - Formalin-fixed, paraffin-embedded human Pancreas stained with Golgi Complex Antibody (371-4).





### **Novus Biologicals USA**

10730 E. Briarwood Avenue  
Centennial, CO 80112  
USA  
Phone: 303.730.1950  
Toll Free: 1.888.506.6887  
Fax: 303.730.1966  
nb-customerservice@bio-techne.com

### **Bio-Techne Canada**

21 Canmotor Ave  
Toronto, ON M8Z 4E6  
Canada  
Phone: 905.827.6400  
Toll Free: 855.668.8722  
Fax: 905.827.6402  
canada.inquires@bio-techne.com

### **Bio-Techne Ltd**

19 Barton Lane  
Abingdon Science Park  
Abingdon, OX14 3NB, United Kingdom  
Phone: (44) (0) 1235 529449  
Free Phone: 0800 37 34 15  
Fax: (44) (0) 1235 533420  
info.EMEA@bio-techne.com

### **General Contact Information**

www.novusbio.com  
Technical Support: nb-technical@bio-techne.com  
Orders: nb-customerservice@bio-techne.com  
General: novus@novusbio.com

### **Products Related to NBP2-45185**

|                  |   |
|------------------|---|
| HAF007           | Goat anti-Mouse IgG Secondary Antibody [HRP]            |
| NB720-B          | Rabbit anti-Mouse IgG (H+L) Secondary Antibody [Biotin] |
| NBP1-43319-0.5mg | Mouse IgG1 Kappa Isotype Control (P3.6.2.8.1)           |

### **Limitations**

This product is for research use only and is not approved for use in humans or in clinical diagnosis. Primary Antibodies are guaranteed for 1 year from date of receipt.

For more information on our 100% guarantee, please visit [www.novusbio.com/guarantee](http://www.novusbio.com/guarantee)

Earn gift cards/discounts by submitting a review: [www.novusbio.com/reviews/submit/NBP2-45185](http://www.novusbio.com/reviews/submit/NBP2-45185)

Earn gift cards/discounts by submitting a publication using this product:  
[www.novusbio.com/publications](http://www.novusbio.com/publications)

