

Product Datasheet

CD3 epsilon Antibody (CRIS-7) NBP2-44878-0.1mg

Unit Size: 0.1 mg

Store at 4C.

www.novusbio.com



technical@novusbio.com

Protocols, Publications, Related Products, Reviews, Research Tools and Images at:
www.novusbio.com/NBP2-44878

Updated 10/23/2024 v.20.1

Earn rewards for product
reviews and publications.

Submit a publication at www.novusbio.com/publications

Submit a review at www.novusbio.com/reviews/destination/NBP2-44878



NBP2-44878-0.1mg**CD3 epsilon Antibody (CRIS-7)**

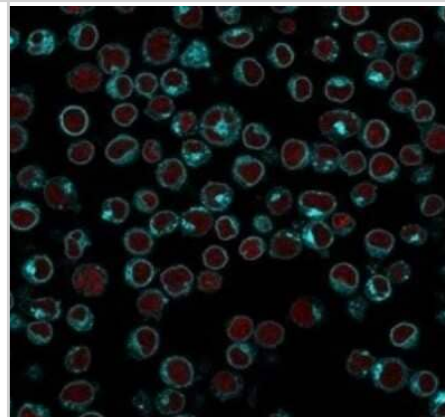
Product Information	
Unit Size	0.1 mg
Concentration	0.2 mg/ml
Storage	Store at 4C.
Clonality	Monoclonal
Clone	CRIS-7
Preservative	0.05% Sodium Azide
Isotype	IgG2a Kappa
Purity	Protein A purified
Buffer	10 mM PBS with 0.05% BSA
Target Molecular Weight	20 kDa

Product Description	
Description	200ug/ml of antibody purified from rabbit anti-serum by Protein A. Prepared in 10 mM PBS with 0.05% BSA & 0.05% azide. Also available WITHOUT BSA at 1.0 mg/ml. (NBP3-11448) Antibody with azide - store at 2 to 8C. Antibody without azide - store at -20 to -80 C.
Host	Mouse
Gene ID	916
Gene Symbol	CD3E
Species	Human, Monkey
Marker	T-Cell Marker
Specificity/Sensitivity	Recognizes the epsilon-chain of CD3, which consists of five different polypeptide chains (designated as gamma, delta, epsilon, zeta, and eta) with MW ranging from 16-28kDa. The CD3 complex is closely associated at the lymphocyte cell surface with the T cell antigen receptor (TCR). Reportedly, CD3 complex is involved in signal transduction to the T cell interior following antigen recognition. The CD3 antigen is first detectable in early thymocytes and probably represents one of the earliest signs of commitment to the T cell lineage. In cortical thymocytes, CD3 is predominantly intra-cytoplasmic. However, in medullary thymocytes, it appears on the T cell surface. CD3 antigen is a highly specific marker for T cells, and is present in majority of T cell neoplasms.
Immunogen	Stimulated human leukocytes

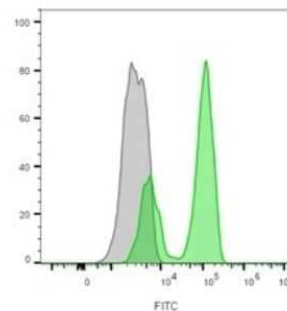
Product Application Details	
Applications	Flow Cytometry, Immunocytochemistry/ Immunofluorescence
Recommended Dilutions	Flow Cytometry 1-2 ug/million cells, Immunocytochemistry/ Immunofluorescence 1-2 ug/ml
Application Notes	Induce T cell activation and proliferation: Order Ab without Azide. Optimal dilution for a specific application should be determined.

Images

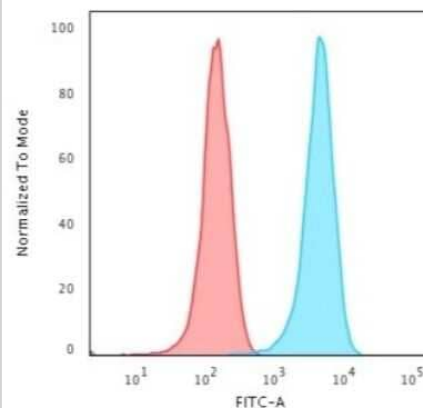
Immunocytochemistry/Immunofluorescence: CD3 epsilon Antibody (CRIS-7) [NBP2-44878] - Immunofluorescence Analysis of PFA-fixed Jurkat cells. CD3 epsilon antibody (CRIS-7) followed by goat anti-mouse IgG-CF488 (cyan). Nuclei stained with RedDot (red).



Flow Cytometry: CD3 epsilon Antibody (CRIS-7) [NBP2-44878] - Flow cytometric analysis of lymphocyte-gated peripheral blood mononuclear cells. CD3 epsilon antibody (CRIS-7) followed goat anti-mouse IgG-CF488A (green); unstained PBMCs (gray).



Flow Cytometry: CD3 epsilon Antibody (CRIS-7) [NBP2-44878] - Flow Cytometric Analysis of Jurkat cells. CD3 epsilon Antibody (CRIS-7) followed by Goat anti-Mouse IgG-CF488 (Blue); Isotype Control (Red).





Novus Biologicals USA

10730 E. Briarwood Avenue
Centennial, CO 80112
USA
Phone: 303.730.1950
Toll Free: 1.888.506.6887
Fax: 303.730.1966
nb-customerservice@bio-techne.com

Bio-Techne Canada

21 Canmotor Ave
Toronto, ON M8Z 4E6
Canada
Phone: 905.827.6400
Toll Free: 855.668.8722
Fax: 905.827.6402
canada.inquires@bio-techne.com

Bio-Techne Ltd

19 Barton Lane
Abingdon Science Park
Abingdon, OX14 3NB, United Kingdom
Phone: (44) (0) 1235 529449
Free Phone: 0800 37 34 15
Fax: (44) (0) 1235 533420
info.EMEA@bio-techne.com

General Contact Information

www.novusbio.com
Technical Support: nb-technical@bio-techne.com
Orders: nb-customerservice@bio-techne.com
General: novus@novusbio.com

Products Related to NBP2-44878-0.1mg

HAF007	Goat anti-Mouse IgG Secondary Antibody [HRP]
NB720-B	Rabbit anti-Mouse IgG (H+L) Secondary Antibody [Biotin]
NBP1-96981-0.5mg	Mouse IgG2a Kappa Isotype Control (M2AK)
NBP2-22752	Recombinant Human CD3 epsilon His Protein

Limitations

This product is for research use only and is not approved for use in humans or in clinical diagnosis. Primary Antibodies are guaranteed for 1 year from date of receipt.

For more information on our 100% guarantee, please visit www.novusbio.com/guarantee

Earn gift cards/discounts by submitting a review: www.novusbio.com/reviews/submit/NBP2-44878

Earn gift cards/discounts by submitting a publication using this product:
www.novusbio.com/publications

