

Product Datasheet

Laminin gamma 1 Antibody (A5)

NBP2-44751-0.1mg

Unit Size: 0.1 mg

Store at 4C.

www.novusbio.com



technical@novusbio.com

Reviews: 1 Publications: 5

Protocols, Publications, Related Products, Reviews, Research Tools and Images at:
www.novusbio.com/NBP2-44751

Updated 10/23/2024 v.20.1

Earn rewards for product reviews and publications.

Submit a publication at www.novusbio.com/publications

Submit a review at www.novusbio.com/reviews/destination/NBP2-44751



NBP2-44751-0.1mg

Laminin gamma 1 Antibody (A5)

Product Information	
Unit Size	0.1 mg
Concentration	0.2 mg/ml
Storage	Store at 4C.
Clonality	Monoclonal
Clone	A5
Preservative	0.05% Sodium Azide
Isotype	IgG2a Kappa
Purity	Protein A or G purified
Buffer	10 mM PBS with 0.05% BSA
Target Molecular Weight	210 kDa

Product Description	
Description	200ug/ml of antibody purified from Bioreactor Concentrate by Protein A or G. Prepared in 10 mM PBS with 0.05% BSA & 0.05% azide. Also available WITHOUT BSA at 1.0 mg/ml. (NBP2-47842) Antibody with azide - store at 2 to 8C. Antibody without azide - store at -20 to -80 C.
Host	Rat
Gene ID	3915
Gene Symbol	LAMC1
Species	Human, Mouse, Bovine
Reactivity Notes	Bovine reported by a verified customer review.
Specificity/Sensitivity	Laminins are large hetero-trimeric, non-collagenous glycoproteins composed of alpha, beta, and gamma chains. This monoclonal antibody reacts with laminin B2/1 chain of ~210kDa and does not cross-react with other basement membrane components or fibronectin. Its specificity was established by immunoprecipitation and immunofluorescence of human skeletal muscle and kidney with laminin chain-specific monoclonal antibodies. Epithelial sheets in vivo are separated from the mesenchymal elements of the stroma by a thin layer of a specialized type of extracellular matrix termed the basement membrane (BM). This structure consists of individual components, some of which are ubiquitous in BMs and some are not. The ubiquitous ones comprise laminin (LN), entactin/nidogen (EN), collagen type IV (CIV), and large heparan sulfate proteoglycan (HSPG), which interact specifically with each other to form a continuous and regular BM. Alterations of BM integrity, from local discontinuities up to complete loss, are described in many types of human and animal epithelial neoplasms. This monoclonal antibody stains uniformly all human and murine basement membranes.
Immunogen	Murine EHS laminin preparation

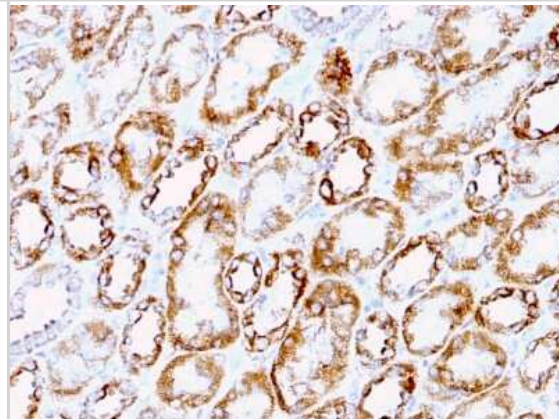
Product Application Details	
Applications	Flow Cytometry, Immunocytochemistry/ Immunofluorescence, Immunohistochemistry, Immunohistochemistry-Frozen, Immunohistochemistry-Paraffin, Immunofluorescence



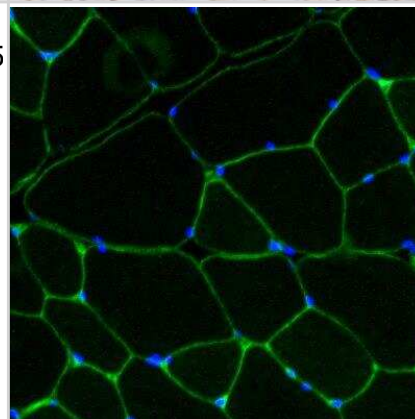
Recommended Dilutions	Flow Cytometry 0.5-1 ug/million cells, Immunohistochemistry, Immunocytochemistry/ Immunofluorescence 0.5-1.0 ug/ml, Immunohistochemistry-Paraffin 1-2 ug/ml, Immunohistochemistry-Frozen, Immunofluorescence 1 - 2 ug/ml
Application Notes	Immunohistochemistry (Formalin-fixed): 1-2ug/ml for 30 minutes at RT. Staining of formalin-fixed tissues requires heating tissue sections in 10mM Tris with 1mM EDTA, pH 9.0, for 45 min at 95C followed by cooling at RT for 20 minutes. Optimal dilution for a specific application should be determined.

Images

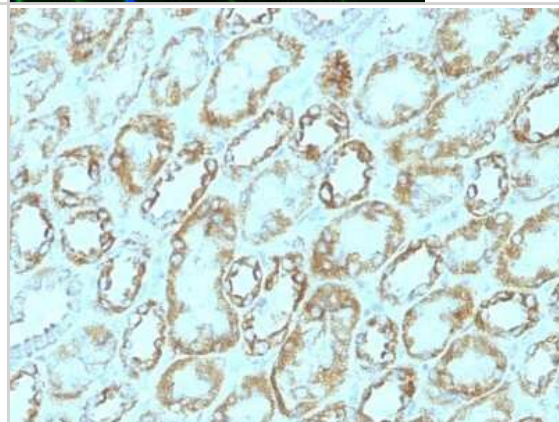
Immunohistochemistry-Paraffin: Laminin gamma 1 Antibody (A5) [NBP2-44751] - Formalin-fixed, paraffin-embedded human Renal Cell Carcinoma stained with Laminin gamma 1 Antibody (A5).



Immunohistochemistry-Frozen: Laminin gamma 1 Antibody (A5) [NBP2-44751] - Bovine frozen skeletal muscle section was fixed in 4% PFA for 5 min and stained with anti-laminin antibody (NBP2-44751) overnight at 4 C and then stained with a goat anti-rat-Alexa Fluor 488 secondary antibody (green) for 1 hour at room temperature. Section was then mounted in a mounting medium containing Dapi (blue). Image from verified customer review.



Immunohistochemistry-Paraffin: Laminin gamma 1 Antibody (A5) [NBP2-44751] - Human Renal Cell Carcinoma stained with Laminin Monoclonal Antibody (A5).



Publications

Ribieras AJ, Ortiz YY, Li Y et al. E-Selectin/AAV Gene Therapy Promotes Myogenesis and Skeletal Muscle Recovery in a Mouse Hindlimb Ischemia Model Cardiovascular therapeutics 2023-05-19 [PMID: 37251271]

Maturana C, Chan A, Verpeut J, Engel E Local and systemic administration of AAV vectors with alphaherpesvirus latency-associated promoter 2 drives potent transgene expression in mouse liver, kidney, and skeletal muscle Journal of Virological Methods 2023-04-01 [PMID: 36736702] (IHC-Fr, Mouse)

Details:

Dilution used in IHC-Fr 1:400

Plosa EJ, Benjamin JT, Sucre JM et al. beta 1 Integrin regulates adult lung alveolar epithelial cell inflammation JCI Insight 2020-01-30 [PMID: 31873073] (IF/IHC, Mouse)

Whitmore C, Pratt EPS, Anderson L et al. The ERG1a potassium channel increases basal intracellular calcium concentration and calpain activity in skeletal muscle cells Skelet Muscle 2020-01-16 [PMID: 31948476] (Mouse)

Hammers DW, Hart CC, Patsalos A Glucocorticoids counteract hypertrophic effects of myostatin inhibition in dystrophic muscle JCI Insight 2019-12-12 [PMID: 31830002] (ICC/IF, Mouse)





Novus Biologicals USA

10730 E. Briarwood Avenue
Centennial, CO 80112
USA
Phone: 303.730.1950
Toll Free: 1.888.506.6887
Fax: 303.730.1966
nb-customerservice@bio-techne.com

Bio-Techne Canada

21 Canmotor Ave
Toronto, ON M8Z 4E6
Canada
Phone: 905.827.6400
Toll Free: 855.668.8722
Fax: 905.827.6402
canada.inquires@bio-techne.com

Bio-Techne Ltd

19 Barton Lane
Abingdon Science Park
Abingdon, OX14 3NB, United Kingdom
Phone: (44) (0) 1235 529449
Free Phone: 0800 37 34 15
Fax: (44) (0) 1235 533420
info.EMEA@bio-techne.com

General Contact Information

www.novusbio.com
Technical Support: nb-technical@bio-techne.com
Orders: nb-customerservice@bio-techne.com
General: novus@novusbio.com

Products Related to NBP2-44751-0.1mg

HAF005	Goat anti-Rat IgG Secondary Antibody [HRP]
NBP1-75398	Goat anti-Rat IgG (H+L) Secondary Antibody (Pre-adsorbed)
NBP1-43321-0.5mg	Rat IgG2a Kappa Light Chain Isotype Control (R2a)
H00003915-P01-10ug	Recombinant Human Laminin gamma 1 GST (N-Term) Protein

Limitations

This product is for research use only and is not approved for use in humans or in clinical diagnosis. Primary Antibodies are guaranteed for 1 year from date of receipt.

For more information on our 100% guarantee, please visit www.novusbio.com/guarantee

Earn gift cards/discounts by submitting a review: www.novusbio.com/reviews/submit/NBP2-44751

Earn gift cards/discounts by submitting a publication using this product:
www.novusbio.com/publications

