

Product Datasheet

EpCAM/TROP1 Antibody (323/A3) - (ECD) - IHC-Prediluted NBP2-44642

Unit Size: 7 ml

Store at 4C.

www.novusbio.com



technical@novusbio.com

Protocols, Publications, Related Products, Reviews, Research Tools and Images at:
www.novusbio.com/NBP2-44642

Updated 10/23/2024 v.20.1

Earn rewards for product
reviews and publications.

Submit a publication at www.novusbio.com/publications

Submit a review at www.novusbio.com/reviews/destination/NBP2-44642



NBP2-44642

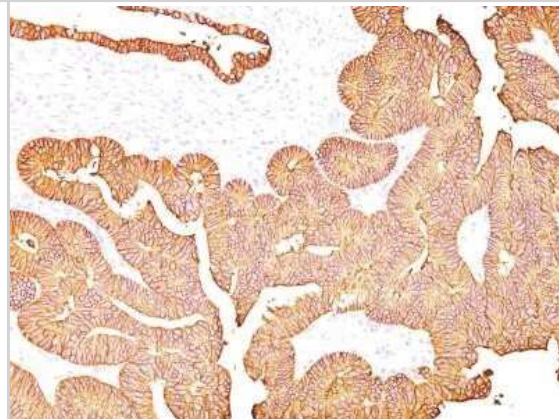
EpCAM/TROP1 Antibody (323/A3) - (ECD) - IHC-Prediluted

| Product Information | |
|------------------------------------|-------------------------------------------------------------------------------------------------------------------------------------------------------------------------------------------------------------------------------------------------------------------------------------------------------------------------------------------------------------------------------------------------------------------------------------------------------------------------------------------------|
| Unit Size | 7 ml |
| Concentration | Please see the vial label for concentration. If unlisted please contact technical services. |
| Storage | Store at 4C. |
| Clonality | Monoclonal |
| Clone | 323/A3 |
| Preservative | 0.05% Sodium Azide |
| Isotype | IgG1 Kappa |
| Purity | Protein A or G purified |
| Buffer | 10 mM PBS with 0.05% BSA |
| Product Description | |
| Description | The prediluted antibody does not require any mixing, dilution, reconstitution, or titration; the antibody is ready-to-use and optimized for staining. |
| Host | Mouse |
| Gene ID | 4072 |
| Gene Symbol | EPCAM |
| Species | Human, Rat (Negative) |
| Reactivity Notes | Does not react with Rat, Feline or Canine. |
| Marker | Epithelial Marker |
| Specificity/Sensitivity | EGP40 is a 40-43kDa transmembrane epithelial glycoprotein, also identified as epithelial specific antigen (ESA), or epithelial cellular adhesion molecule (Ep-CAM). It is expressed on baso-lateral cell surface in most simple epithelia and a vast majority of carcinomas. This antibody has been used to distinguish adenocarcinoma from pleural mesothelioma and hepatocellular carcinoma. This antibody is also useful in distinguishing serous carcinomas of the ovary from mesothelioma. |
| Immunogen | MCF-7 human breast cancer cells |
| Product Application Details | |
| Applications | Immunohistochemistry, Immunohistochemistry-Paraffin |
| Recommended Dilutions | Immunohistochemistry, Immunohistochemistry-Paraffin 0.5 - 1.0 ug/ml |
| Application Notes | Immunohistochemistry (Formalin-fixed): Staining of formalin-fixed tissues requires heating tissue sections in 10mM Tris with 1mM EDTA, pH 9.0, for 45 min at 95C followed by cooling at RT for 20 minutes. |

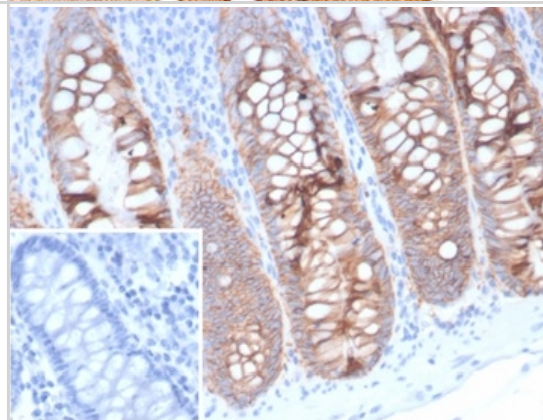


Images

Immunohistochemistry-Paraffin: EpCAM/TROP1 Antibody (323/A3) - IHC-Prediluted [NBP2-44642] - Formalin-fixed, paraffin-embedded Human Colon Carcinoma stained with Ep-CAM Mouse Monoclonal Antibody (323/A3).



Formalin-fixed, paraffin-embedded human colon stained with EpCAM/TROP1 antibody (323/A3) - (ECD). Inset: PBS instead of primary antibody; secondary only negative control.





Novus Biologicals USA

10730 E. Briarwood Avenue
Centennial, CO 80112
USA
Phone: 303.730.1950
Toll Free: 1.888.506.6887
Fax: 303.730.1966
nb-customerservice@bio-techne.com

Bio-Techne Canada

21 Canmotor Ave
Toronto, ON M8Z 4E6
Canada
Phone: 905.827.6400
Toll Free: 855.668.8722
Fax: 905.827.6402
canada.inquires@bio-techne.com

Bio-Techne Ltd

19 Barton Lane
Abingdon Science Park
Abingdon, OX14 3NB, United Kingdom
Phone: (44) (0) 1235 529449
Free Phone: 0800 37 34 15
Fax: (44) (0) 1235 533420
info.EMEA@bio-techne.com

General Contact Information

www.novusbio.com
Technical Support: nb-technical@bio-techne.com
Orders: nb-customerservice@bio-techne.com
General: novus@novusbio.com

Products Related to NBP2-44642

| | |
|-------------------|---------------------------------------------------------|
| HAF007 | Goat anti-Mouse IgG Secondary Antibody [HRP] |
| NB720-B | Rabbit anti-Mouse IgG (H+L) Secondary Antibody [Biotin] |
| NBP1-43319-0.5mg | Mouse IgG1 Kappa Isotype Control (P3.6.2.8.1) |
| NBP2-52190-0.05mg | Recombinant Human EpCAM/TROP1 His Protein |

Limitations

This product is for research use only and is not approved for use in humans or in clinical diagnosis. Primary Antibodies are guaranteed for 1 year from date of receipt.

For more information on our 100% guarantee, please visit www.novusbio.com/guarantee

Earn gift cards/discounts by submitting a review: www.novusbio.com/reviews/submit/NBP2-44642

Earn gift cards/discounts by submitting a publication using this product:
www.novusbio.com/publications

