

Product Datasheet

EpCAM/TROP1 Antibody (MOC-31)

NBP2-44640-0.1mg

Unit Size: 0.1 mg

Store at 4C.

www.novusbio.com



technical@novusbio.com

Publications: 4

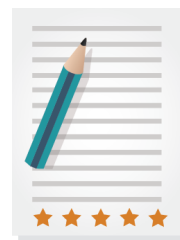
Protocols, Publications, Related Products, Reviews, Research Tools and Images at:
www.novusbio.com/NBP2-44640

Updated 10/23/2024 v.20.1

Earn rewards for product reviews and publications.

Submit a publication at www.novusbio.com/publications

Submit a review at www.novusbio.com/reviews/destination/NBP2-44640



NBP2-44640-0.1mg

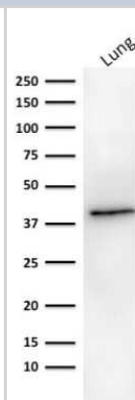
EpCAM/TROP1 Antibody (MOC-31)

Product Information	
Unit Size	0.1 mg
Concentration	0.2 mg/ml
Storage	Store at 4C.
Clonality	Monoclonal
Clone	MOC-31
Preservative	0.05% Sodium Azide
Isotype	IgG1 Kappa
Purity	Protein A or G purified
Buffer	10 mM PBS with 0.05% BSA
Product Description	
Description	200ug/ml of antibody purified from Bioreactor Concentrate by Protein A or G. Prepared in 10 mM PBS with 0.05% BSA & 0.05% azide. Also available WITHOUT BSA & azide at 1.0 mg/ml. (NBP2-47875) Antibody with azide - store at 2 to 8C. Antibody without azide - store at -20 to -80 C.
Host	Mouse
Gene ID	4072
Gene Symbol	EPCAM
Species	Human, Rat (Negative)
Reactivity Notes	Does not react with Rat, Canine or Feline.
Marker	Epithelial Marker
Specificity/Sensitivity	Binding epitope of this antibody is located in the first EGF-like repeat domain (EGF1) between amino acids 27-59 of Ep-CAM.EGP40 is a 40-43kDa transmembrane epithelial glycoprotein, also identified as epithelial specific antigen (ESA), or epithelial cellular adhesion molecule (Ep-CAM). It is expressed on baso-lateral cell surface in most simple epithelia and a vast majority of carcinomas with the exception of adult squamous epithelium, hepatocytes and gastric epithelial cells. This antibody has been used to distinguish adenocarcinoma from pleural mesothelioma and hepatocellular carcinoma. This antibody is also useful in distinguishing serous carcinomas of the ovary from mesothelioma.
Immunogen	Neuraminidase treated GLS-1 human small cell lung carcinoma cells
Product Application Details	
Applications	Western Blot, Immunocytochemistry/ Immunofluorescence, Immunohistochemistry, Immunohistochemistry-Paraffin
Recommended Dilutions	Western Blot 1:100 - 1:200, Immunohistochemistry, Immunocytochemistry/ Immunofluorescence, Immunohistochemistry-Paraffin 1-2 ug/ml
Application Notes	Immunohistochemistry (Formalin-fixed): 1-2 ug/mL for 30 minutes at RT. Staining of formalin-fixed tissues requires heating tissue sections in 10 mM Tris with 1 mM EDTA, pH 9.0, for 45 min at 95C followed by cooling at RT for 20 minutes. Optimal dilution for a specific application should be determined. Use in Immunocytochemistry/immunofluorescence reported in scientific literature (PMID: 28139197).



Images

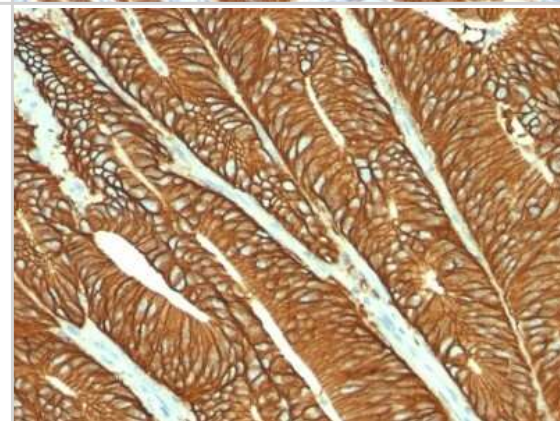
Western Blot: EpCAM/TROP1 Antibody (MOC-31) [NBP2-44640] - Western Blot analysis of human lung tissue lysate using EpCAM/TROP1 Antibody (MOC-31).



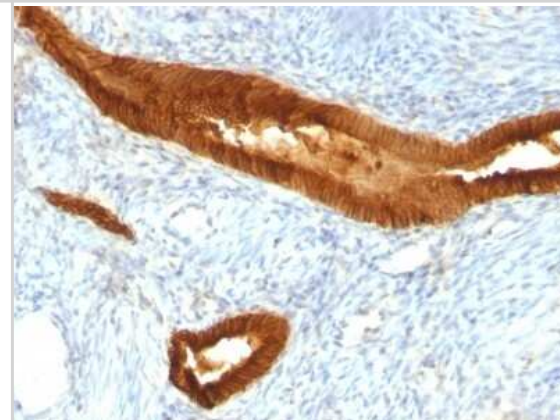
Immunohistochemistry-Paraffin: EpCAM/TROP1 Antibody (MOC-31) [NBP2-44640] - Human Ovarian Carcinoma stained with Ep-CAM Monoclonal Antibody (MOC-31).



Immunohistochemistry-Paraffin: EpCAM/TROP1 Antibody (MOC-31) [NBP2-44640] - Human Colon Carcinoma stained with Ep-CAM Monoclonal Antibody (MOC-31).



Immunohistochemistry-Paraffin: EpCAM/TROP1 Antibody (MOC-31) [NBP2-44640] - Human Endometrial Carcinoma stained with Ep-CAM Monoclonal Antibody (MOC-31).



Publications

Dressler FF, Hinrichs S, Roesch MC, Perner S EpCAM tumor specificity and proteoform patterns in urothelial cancer Journal of cancer research and clinical oncology 2023-05-08 [PMID: 37154925] (Western Blot, Human)

Alexander JI, Vendramini-Costa DB, Francescone R et al. Palladin isoforms 3 and 4 regulate cancer-associated fibroblast pro-tumor functions in pancreatic ductal adenocarcinoma Scientific reports 2021-02-15 [PMID: 33589694] (IHC-P, Human)

Gabitova-Cornell L, Surumbayeva A, Peri S et al. Cholesterol Pathway Inhibition Induces TGF-beta Signaling to Promote Basal Differentiation in Pancreatic Cancer Cancer Cell 2020-09-15 [PMID: 32976774] (IF/IHC)

Franco-Barraza J, Francescone R, Luong T et al. Matrix-regulated integrin alphavb5 maintains alpha5b1-dependent desmoplastic traits prognostic of neoplastic recurrence. Elife. 2017-01-31 [PMID: 28139197] (ICC/IF, Human)





Novus Biologicals USA

10730 E. Briarwood Avenue
Centennial, CO 80112
USA
Phone: 303.730.1950
Toll Free: 1.888.506.6887
Fax: 303.730.1966
nb-customerservice@bio-techne.com

Bio-Techne Canada

21 Canmotor Ave
Toronto, ON M8Z 4E6
Canada
Phone: 905.827.6400
Toll Free: 855.668.8722
Fax: 905.827.6402
canada.inquires@bio-techne.com

Bio-Techne Ltd

19 Barton Lane
Abingdon Science Park
Abingdon, OX14 3NB, United Kingdom
Phone: (44) (0) 1235 529449
Free Phone: 0800 37 34 15
Fax: (44) (0) 1235 533420
info.EMEA@bio-techne.com

General Contact Information

www.novusbio.com
Technical Support: nb-technical@bio-techne.com
Orders: nb-customerservice@bio-techne.com
General: novus@novusbio.com

Products Related to NBP2-44640-0.1mg

HAF007	Goat anti-Mouse IgG Secondary Antibody [HRP]
NB720-B	Rabbit anti-Mouse IgG (H+L) Secondary Antibody [Biotin]
NBP1-43319-0.5mg	Mouse IgG1 Kappa Isotype Control (P3.6.2.8.1)
NBP2-52190-0.05mg	Recombinant Human EpCAM/TROP1 His Protein

Limitations

This product is for research use only and is not approved for use in humans or in clinical diagnosis. Primary Antibodies are guaranteed for 1 year from date of receipt.

For more information on our 100% guarantee, please visit www.novusbio.com/guarantee

Earn gift cards/discounts by submitting a review: www.novusbio.com/reviews/submit/NBP2-44640

Earn gift cards/discounts by submitting a publication using this product:
www.novusbio.com/publications

