

# Product Datasheet

## Nucleolin Antibody (364-5 + NCL/902)

### NBP2-44613-0.1mg

Unit Size: 0.1 mg

Store at 4C.

[www.novusbio.com](http://www.novusbio.com)



[technical@novusbio.com](mailto:technical@novusbio.com)

Protocols, Publications, Related Products, Reviews, Research Tools and Images at:  
[www.novusbio.com/NBP2-44613](http://www.novusbio.com/NBP2-44613)

Updated 10/23/2024 v.20.1

Earn rewards for product  
reviews and publications.

Submit a publication at [www.novusbio.com/publications](http://www.novusbio.com/publications)

Submit a review at [www.novusbio.com/reviews/destination/NBP2-44613](http://www.novusbio.com/reviews/destination/NBP2-44613)



**NBP2-44613-0.1mg**

Nucleolin Antibody (364-5 + NCL/902)

Product Information	
Unit Size	0.1 mg
Concentration	0.2 mg/ml
Storage	Store at 4C.
Clonality	Monoclonal
Clone	364-5 + NCL/902
Preservative	0.05% Sodium Azide
Isotype	IgG1 Kappa/IgG1 Kappa
Purity	Protein A or G purified
Buffer	10 mM PBS with 0.05% BSA
Target Molecular Weight	76 kDa

Product Description	
Description	200ug/ml of antibody purified from Bioreactor Concentrate by Protein A or G. Prepared in 10 mM PBS with 0.05% BSA & 0.05% azide. Also available WITHOUT BSA & azide at 1.0 mg/ml. (NBP2-47862)  Antibody with azide - store at 2 to 8C. Antibody without azide - store at -20 to -80 C.
Host	Mouse
Gene ID	4691
Gene Symbol	NCL
Species	Human, Bovine (Negative), Mouse (Negative), Rat (Negative)
Reactivity Notes	Does not react with Mouse, Rat and Bovine.
Marker	Marker of Human Cells
Specificity/Sensitivity	Recognizes a protein of ~76kDa, which is identified as Nucleolin (NCL). It is the major nucleolar phosphoprotein of growing eukaryotic cells. NCL is located mainly in dense fibrillar regions of the nucleolus. It is found associated with intranucleolar chromatin and pre-ribosomal particles. Human NCL gene consists of 14 exons with 13 introns and spans approximately 11kb. It induces chromatin decondensation by binding to histone H1. It is thought to play a role in pre-rRNA transcription and ribosome assembly. This monoclonal antibody can be used to stain the nucleoli in cell or tissue preparations and can be used as a marker of the nucleoli in subcellular fractions. It produces a speckled pattern in the nuclei of cells of normal and malignant cells and may be used to stain the nucleoli of cells in fixed or frozen tissue sections. It can be used with paraformaldehyde fixed frozen tissue or cell preparations and formalin fixed, paraffin-embedded tissue sections.
Immunogen	Lysate of SU-DHL-1 Nuclei (364-5); Recombinant human NCL protein (NCL/902) (Uniprot: P19338 )

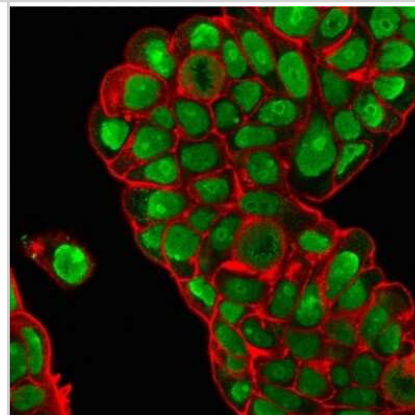
Product Application Details	
Applications	Western Blot, Flow Cytometry, Immunocytochemistry/ Immunofluorescence, Immunohistochemistry, Immunohistochemistry-Paraffin
Recommended Dilutions	Western Blot 0.5-1 ug/ml, Flow Cytometry 0.5-1 ug/million cells, Immunohistochemistry, Immunocytochemistry/ Immunofluorescence 0.5-1 ug/ml, Immunohistochemistry-Paraffin 1-2 ug/ml

**Application Notes**

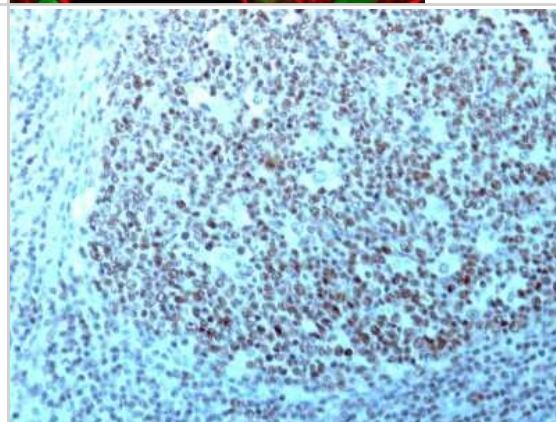
Immunohistochemistry (Formalin-fixed): 1-2ug/ml for 30 minutes at RT. Staining of formalin-fixed tissues requires heating tissue sections in 10mM Tris with 1mM EDTA, pH 9.0, for 45 min at 95C followed by cooling at RT for 20 minutes. Optimal dilution for a specific application should be determined.

**Images**

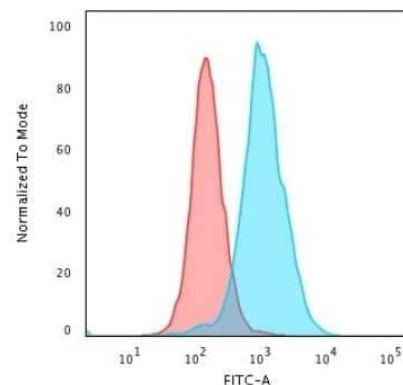
Immunocytochemistry/Immunofluorescence: Nucleolin Antibody (364-5 + NCL/902) [NBP2-44613] - Immunofluorescence Analysis of PFA-fixed MCF-7 cells stained with Nucleolin Antibody (364-5 + NCL/902) followed by Goat anti-Mouse IgG-CF488 (Green). Membrane is stained with Phalloidin-CF640.



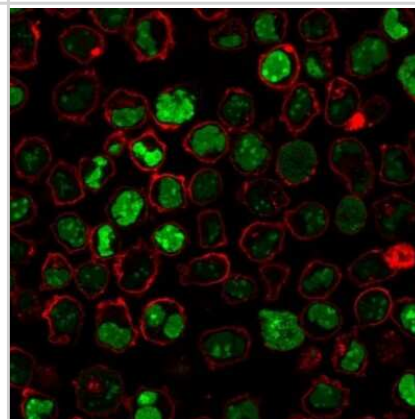
Immunohistochemistry-Paraffin: Nucleolin Antibody (364-5 + NCL/902) [NBP2-44613] - Formalin-fixed, paraffin-embedded human Tonsil stained with Nucleolin Antibody (364-5 + NCL/902).



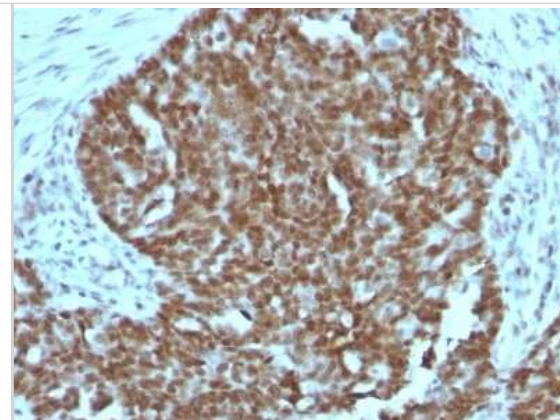
Flow Cytometry: Nucleolin Antibody (364-5 + NCL/902) [NBP2-44613] - Flow Cytometric Analysis of PFA-fixed K562 cells using Nucleolin Antibody (364-5 + NCL/902). followed by Goat anti-Mouse IgG-CF488 (Blue); Isotype Control (Red).



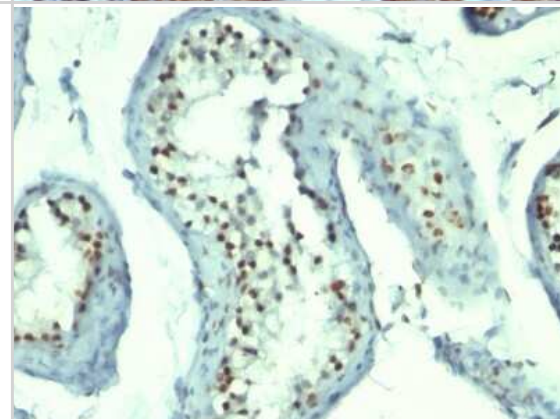
Immunocytochemistry/Immunofluorescence: Nucleolin Antibody (364-5 + NCL/902) [NBP2-44613] - Immunofluorescence Analysis of PFA-fixed K562 cells stained with Nucleolin Antibody (364-5 + NCL/902) followed by Goat anti-Mouse IgG-CF488 (Green). Membrane is stained with Phalloidin-CF640.



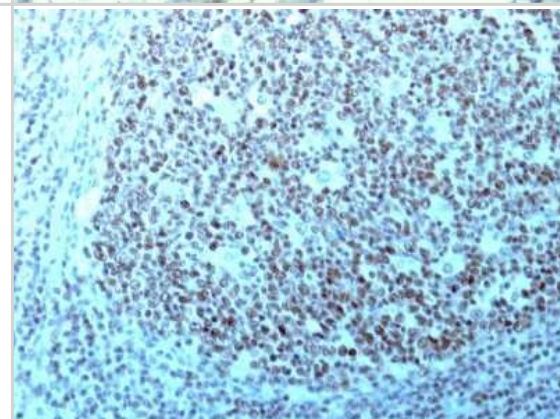
Immunohistochemistry-Paraffin: Nucleolin Antibody (364-5 + NCL/902) [NBP2-44613] - Human Ovarian Carcinoma stained with Nucleolin Monoclonal Antibody (364-5 + NCL/902).



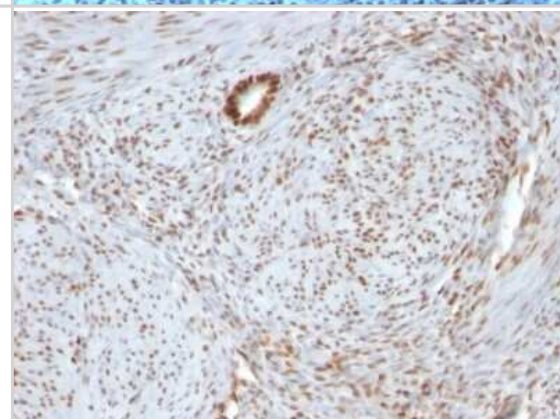
Immunohistochemistry-Paraffin: Nucleolin Antibody (364-5 + NCL/902) [NBP2-44613] - Human Testicular Carcinoma stained with Nucleolin Monoclonal Antibody (364-5 + NCL/902).



Immunohistochemistry-Paraffin: Nucleolin Antibody (364-5 + NCL/902) [NBP2-44613] - Human Tonsil stained with Nucleolin Monoclonal Antibody (364-5 + NCL/902)



Immunohistochemistry-Paraffin: Nucleolin Antibody (364-5 + NCL/902) [NBP2-44613] - Human Uterus stained with Nucleolin Monoclonal Antibody (364-5 + NCL/902).





### **Novus Biologicals USA**

10730 E. Briarwood Avenue  
Centennial, CO 80112  
USA  
Phone: 303.730.1950  
Toll Free: 1.888.506.6887  
Fax: 303.730.1966  
nb-customerservice@bio-techne.com

### **Bio-Techne Canada**

21 Canmotor Ave  
Toronto, ON M8Z 4E6  
Canada  
Phone: 905.827.6400  
Toll Free: 855.668.8722  
Fax: 905.827.6402  
canada.inquires@bio-techne.com

### **Bio-Techne Ltd**

19 Barton Lane  
Abingdon Science Park  
Abingdon, OX14 3NB, United Kingdom  
Phone: (44) (0) 1235 529449  
Free Phone: 0800 37 34 15  
Fax: (44) (0) 1235 533420  
info.EMEA@bio-techne.com

### **General Contact Information**

www.novusbio.com  
Technical Support: nb-technical@bio-techne.com  
Orders: nb-customerservice@bio-techne.com  
General: novus@novusbio.com

### **Products Related to NBP2-44613-0.1mg**

---

HAF007	Goat anti-Mouse IgG Secondary Antibody [HRP]
NB720-B	Rabbit anti-Mouse IgG (H+L) Secondary Antibody [Biotin]
NBP3-21345PEP	Nucleolin Recombinant Protein Antigen
210-TA-005	TNF-alpha [Unconjugated]

---

### **Limitations**

This product is for research use only and is not approved for use in humans or in clinical diagnosis. Primary Antibodies are guaranteed for 1 year from date of receipt.

For more information on our 100% guarantee, please visit [www.novusbio.com/guarantee](http://www.novusbio.com/guarantee)

Earn gift cards/discounts by submitting a review: [www.novusbio.com/reviews/submit/NBP2-44613](http://www.novusbio.com/reviews/submit/NBP2-44613)

Earn gift cards/discounts by submitting a publication using this product:  
[www.novusbio.com/publications](http://www.novusbio.com/publications)

