

Product Datasheet

Nucleolin Antibody (SPM614)

NBP2-44611-0.1mg

Unit Size: 0.1 mg

Store at 4C.

www.novusbio.com



technical@novusbio.com

Protocols, Publications, Related Products, Reviews, Research Tools and Images at:
www.novusbio.com/NBP2-44611

Updated 10/23/2024 v.20.1

Earn rewards for product
reviews and publications.

Submit a publication at www.novusbio.com/publications

Submit a review at www.novusbio.com/reviews/destination/NBP2-44611



NBP2-44611-0.1mg

Nucleolin Antibody (SPM614)

Product Information	
Unit Size	0.1 mg
Concentration	0.2 mg/ml
Storage	Store at 4C.
Clonality	Monoclonal
Clone	SPM614
Preservative	0.05% Sodium Azide
Isotype	IgG1 Kappa
Purity	Protein A or G purified
Buffer	10 mM PBS with 0.05% BSA
Target Molecular Weight	76 kDa

Product Description	
Description	200ug/ml of antibody purified from Bioreactor Concentrate by Protein A or G. Prepared in 10 mM PBS with 0.05% BSA & 0.05% azide. Also available WITHOUT BSA & azide at 1.0 mg/ml. (NBP3-11498) Antibody with azide - store at 2 to 8C. Antibody without azide - store at -20 to -80 C.
Host	Mouse
Gene ID	4691
Gene Symbol	NCL
Species	Human, Bovine (Negative), Mouse (Negative), Rat (Negative)
Reactivity Notes	Does not react with Mouse, Rat or Bovine.
Marker	Marker of Human Cells
Specificity/Sensitivity	Recognizes a protein of ~76kDa, which is identified as Nucleolin (NCL). It is the major nucleolar phosphoprotein of growing eukaryotic cells. NCL is located mainly in dense fibrillar regions of the nucleolus. It is found associated with intranucleolar chromatin and pre-ribosomal particles. Human NCL gene consists of 14 exons with 13 introns and spans approximately 11kb. It induces chromatin decondensation by binding to histone H1. It is thought to play a role in pre-rRNA transcription and ribosome assembly. This monoclonal antibody can be used to stain the nucleoli in cell or tissue preparations and can be used as a marker of the nucleoli in subcellular fractions. It produces a speckled pattern in the nuclei of cells of normal and malignant cells and may be used to stain the nucleoli of cells in fixed or frozen tissue sections. It can be used with paraformaldehyde fixed frozen tissue or cell preparations and formalin fixed, paraffin-embedded tissue sections.
Immunogen	Recombinant full-length human Nucleolin protein (Uniprot: P19338)

Product Application Details	
Applications	Western Blot, Flow Cytometry, Immunocytochemistry/ Immunofluorescence, Immunohistochemistry, Immunohistochemistry-Paraffin
Recommended Dilutions	Western Blot 1-2 ug/ml, Flow Cytometry 0.5-1 ug/million cells, Immunohistochemistry, Immunocytochemistry/ Immunofluorescence 1-4 ug/ml, Immunohistochemistry-Paraffin 1-2 ug/ml

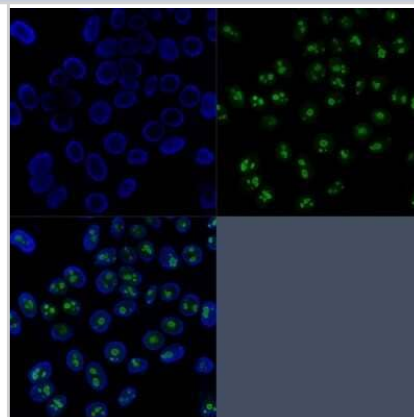


Application Notes

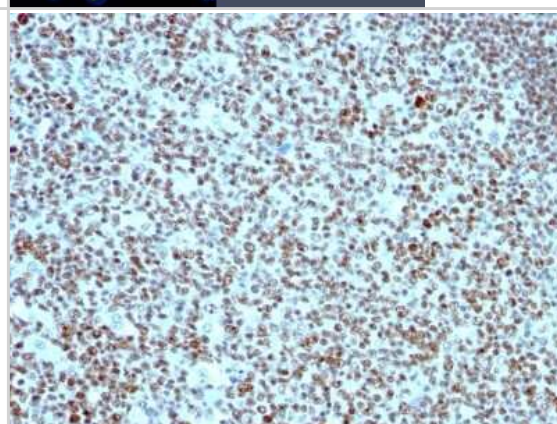
Immunohistochemistry (Formalin-fixed): 1-2ug/ml for 30 minutes at RT. Staining of formalin-fixed tissues requires heating tissue sections in 10mM Tris with 1mM EDTA, pH 9.0, for 45 min at 95C followed by cooling at RT for 20 minutes. Optimal dilution for a specific application should be determined.

Images

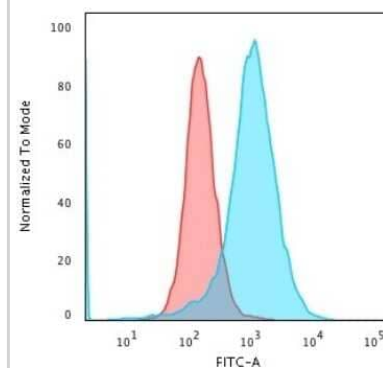
Immunocytochemistry/Immunofluorescence: Nucleolin Antibody (SPM614) [NBP2-44611] - Immunofluorescence analysis of HeLa cells stained with Nucleolin Mouse Monoclonal Antibody (SPM614) (green). Nuclei counterstained with DAPI (blue).



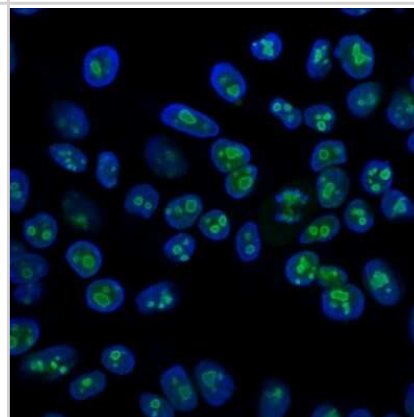
Immunohistochemistry-Paraffin: Nucleolin Antibody (SPM614) [NBP2-44611] - Human Tonsil stained with Nucleolin Monoclonal Antibody (SPM614).



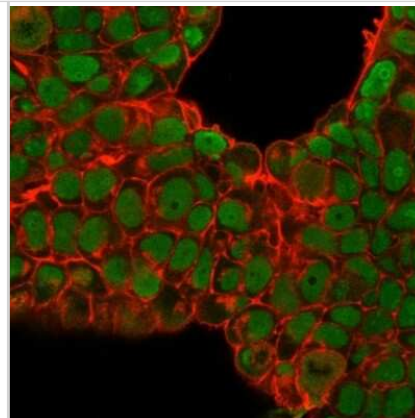
Flow Cytometry: Nucleolin Antibody (SPM614) [NBP2-44611] - Flow Cytometric Analysis of PFA-fixed K562 cells using Nucleolin Antibody (SPM614). followed by Goat anti-Mouse IgG-CF488 (Blue); Isotype Control (Red).



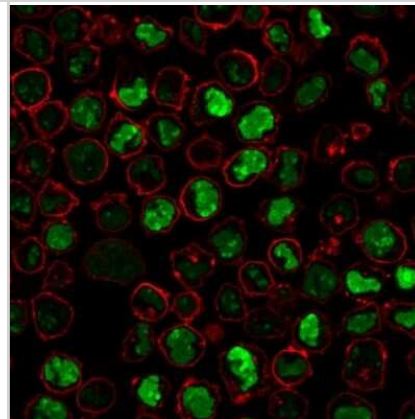
Immunocytochemistry/Immunofluorescence: Nucleolin Antibody (SPM614) [NBP2-44611] - Immunofluorescence Analysis of HeLa cells stained with CF647R labeled Nucleolin Antibody (SPM614)(Green) Blue: DAPI.



Immunocytochemistry/Immunofluorescence: Nucleolin Antibody (SPM614) [NBP2-44611] - Immunofluorescence Analysis of PFA-fixed MCF-7 cells stained with Nucleolin Antibody (SPM614) followed by Goat anti-Mouse IgG-CF488 (Green). Membrane is stained with Phalloidin-CF640.



Immunocytochemistry/Immunofluorescence: Nucleolin Antibody (SPM614) [NBP2-44611] - Immunofluorescence Analysis of PFA-fixed K562 cells stained with Nucleolin Antibody (SPM614) followed by Goat anti-Mouse IgG-CF488 (Green). Membrane is stained with Phalloidin-CF640.





Novus Biologicals USA

10730 E. Briarwood Avenue
Centennial, CO 80112
USA
Phone: 303.730.1950
Toll Free: 1.888.506.6887
Fax: 303.730.1966
nb-customerservice@bio-techne.com

Bio-Techne Canada

21 Canmotor Ave
Toronto, ON M8Z 4E6
Canada
Phone: 905.827.6400
Toll Free: 855.668.8722
Fax: 905.827.6402
canada.inquires@bio-techne.com

Bio-Techne Ltd

19 Barton Lane
Abingdon Science Park
Abingdon, OX14 3NB, United Kingdom
Phone: (44) (0) 1235 529449
Free Phone: 0800 37 34 15
Fax: (44) (0) 1235 533420
info.EMEA@bio-techne.com

General Contact Information

www.novusbio.com
Technical Support: nb-technical@bio-techne.com
Orders: nb-customerservice@bio-techne.com
General: novus@novusbio.com

Products Related to NBP2-44611-0.1mg

HAF007	Goat anti-Mouse IgG Secondary Antibody [HRP]
NB720-B	Rabbit anti-Mouse IgG (H+L) Secondary Antibody [Biotin]
NBP1-43319-0.5mg	Mouse IgG1 Kappa Isotype Control (P3.6.2.8.1)
NBP3-21345PEP	Nucleolin Recombinant Protein Antigen

Limitations

This product is for research use only and is not approved for use in humans or in clinical diagnosis. Primary Antibodies are guaranteed for 1 year from date of receipt.

For more information on our 100% guarantee, please visit www.novusbio.com/guarantee

Earn gift cards/discounts by submitting a review: www.novusbio.com/reviews/submit/NBP2-44611

Earn gift cards/discounts by submitting a publication using this product:
www.novusbio.com/publications

