

Product Datasheet

p21/CIP1/CDKN1A Antibody (DCS-60.2) **NBP2-44525-0.1mg**

Unit Size: 0.1 mg

Store at 4C.

www.novusbio.com



technical@novusbio.com

Reviews: 1 Publications: 3

Protocols, Publications, Related Products, Reviews, Research Tools and Images at:
www.novusbio.com/NBP2-44525

Updated 4/13/2025 v.20.1

**Earn rewards for product
reviews and publications.**

Submit a publication at www.novusbio.com/publications

Submit a review at www.novusbio.com/reviews/destination/NBP2-44525



NBP2-44525-0.1mg

p21/CIP1/CDKN1A Antibody (DCS-60.2)

Product Information	
Unit Size	0.1 mg
Concentration	0.2 mg/ml
Storage	Store at 4C.
Clonality	Monoclonal
Clone	DCS-60.2
Preservative	0.05% Sodium Azide
Isotype	IgG2a Kappa
Purity	Protein A or G purified
Buffer	10 mM PBS with 0.05% BSA
Target Molecular Weight	21 kDa

Product Description	
Description	200ug/ml of antibody purified from Bioreactor Concentrate by Protein A or G. Prepared in 10 mM PBS with 0.05% BSA & 0.05% azide. Also available WITHOUT BSA & azide at 1.0 mg/ml. (NBP2-47781) Antibody with azide - store at 2 to 8C. Antibody without azide - store at -20 to -80C.
Host	Mouse
Gene ID	1026
Gene Symbol	CDKN1A
Species	Human, Mouse (Negative), Rat (Negative)
Reactivity Notes	Does not react with Mouse or Rat.
Specificity/Sensitivity	This monoclonal antibody recognizes a 21kDa protein, identified as the p21WAF1 tumor suppressor protein. This monoclonal antibody is highly specific to p21 and shows no cross-reaction with other closely related mitotic inhibitors. p21WAF1 is a specific inhibitor of cdks and a tumor suppressor involved in the pathogenesis of a variety of malignancies. The expression of this gene acts as an inhibitor of the cell cycle during G1 phase and is tightly controlled by the tumor suppressor protein p53. Its expression is induced by the wild type, but not mutant, p53 suppressor protein. Normal cells generally display a rather intense nuclear p21 expression. Loss of p21 expression has been reported in many carcinomas (gastric carcinoma, non-small cell lung carcinoma, thyroid carcinoma).
Immunogen	Recombinant full-length human p21/CIP1/CDKN1A protein (Uniprot: P38936)

Product Application Details	
Applications	Western Blot, Simple Western, Flow Cytometry, Immunocytochemistry/ Immunofluorescence, Immunohistochemistry, Immunohistochemistry-Paraffin, Immunofluorescence
Recommended Dilutions	Western Blot 1-2 ug/ml, Simple Western 10 ug/ml, Flow Cytometry 1-2 ug/million cells, Immunohistochemistry, Immunocytochemistry/ Immunofluorescence 1-2 ug/ml, Immunohistochemistry-Paraffin 2-4 ug/ml, Immunofluorescence 1 - 2 ug/ml

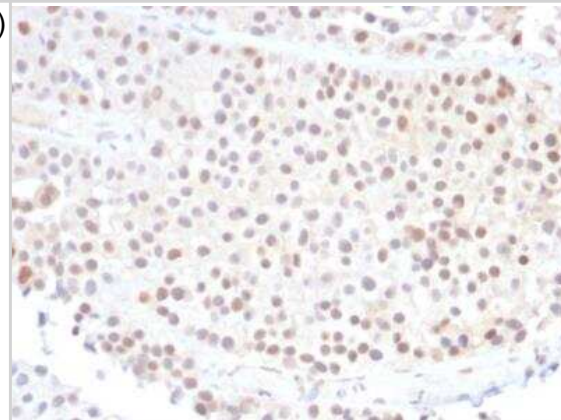


Application Notes

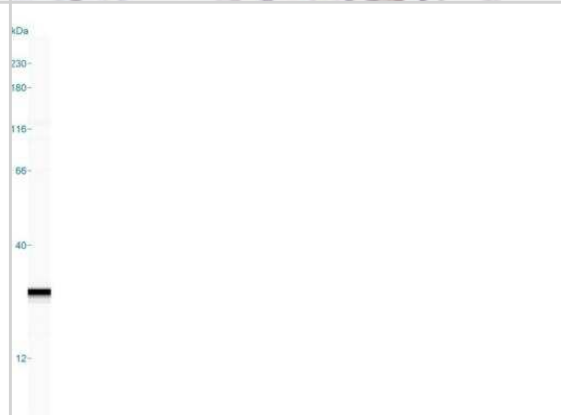
Use in Western Blot reported in scientific literature (PMID: 33086074).
 Immunohistochemistry (Formalin-fixed): 2-4ug/ml for 30 minutes at RT. Staining of formalin-fixed tissues requires heating tissue sections in 10mM Tris with 1mM EDTA, pH 9.0, for 45 min at 95C followed by cooling at RT for 20 minutes. Optimal dilution for a specific application should be determined.
 In Simple Western only 10 - 15 ul of the recommended dilution is used per data point.
 See [Simple Western Antibody Database](#) for Simple Western validation: Tested in MCF-7 lysate(s), separated by Size, antibody dilution of 10 ug/mL, apparent MW was 28 kDa.

Images

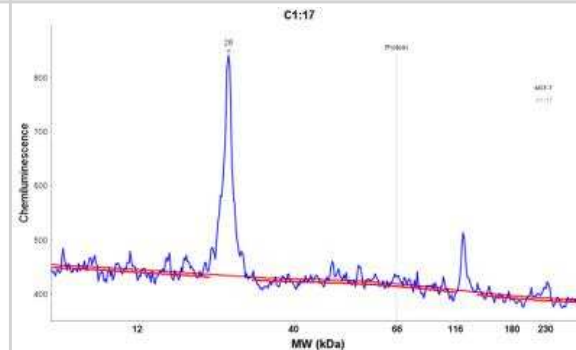
Immunohistochemistry-Paraffin: p21/CIP1/CDKN1A Antibody (DCS-60.2) [NBP2-44525] - Human Bladder Carcinoma stained with p21/CIP1/CDKN1A Antibody (DCS-60.2).



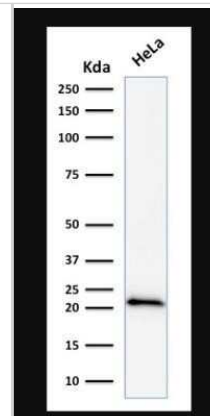
Simple Western: p21/CIP1/CDKN1A Antibody (DCS-60.2) [NBP2-44525]
 - Simple Western lane view shows a specific band for p21/CIP1/CDKN1A in 0.2 mg/ml of MCF-7 lysate(s). This experiment was performed under reducing conditions using the 12-230 kDa separation system.



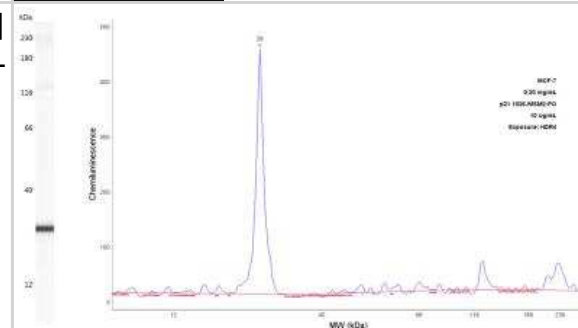
Simple Western: p21/CIP1/CDKN1A Antibody (DCS-60.2) [NBP2-44525]
 - Electropherogram image of the corresponding Simple Western lane. p21/CIP1/CDKN1A antibody was used at 10 ug/ml dilution of MCF-7 lysates(s) respectively.



Western Blot: p21/CIP1/CDKN1A Antibody (DCS-60.2) [NBP2-44525] - Analysis of human HeLa cell lysate using p21/CIP1/CDKN1A Antibody (DCS-60.2).



Simple Western: p21/CIP1/CDKN1A Antibody (DCS-60.2) [NBP2-44525] - Lane view shows a specific band for p21/CIP1/CDKN1A using 2 mg/mL of MCF-7 cell lysate and 10 ug/mL antibody dilution. Electropherogram image of corresponding Simple Western lane view. Image reported by internal validation.



Publications

Balakrishnan I, Danis E, Pierce A et al Senescence Induced by BMI1 Inhibition Is a Therapeutic Vulnerability in H3K27M-Mutant DIPG Cell Rep 2020-10-21 [PMID: 33086074] (WB, IF/IHC, Human)

Details:

Citation using the IHC-Prediluted version of this antibody.

Tordjman J, Majumder M, Amiri M et al. Tumor suppressor role of cytoplasmic polyadenylation element binding protein 2 (CPEB2) in human mammary epithelial cells BMC Cancer 2019-06-11 [PMID: 31185986] (WB, Human)

Ponandai-Srinivasan S, Lalitkumar PG, Garcia L et al. Mifepristone mediates anti-proliferative effect on ovarian mesenchymal stem/stromal cells from female BRCA1-/2- carriers. Acta Obstet Gynecol Scand. 2018-10-16 [PMID: 30325501] (WB, Human)

**Novus Biologicals USA**

10730 E. Briarwood Avenue
Centennial, CO 80112
USA
Phone: 303.730.1950
Toll Free: 1.888.506.6887
Fax: 303.730.1966
nb-customerservice@bio-techne.com

Bio-Techne Canada

21 Canmotor Ave
Toronto, ON M8Z 4E6
Canada
Phone: 905.827.6400
Toll Free: 855.668.8722
Fax: 905.827.6402
canada.inquires@bio-techne.com

Bio-Techne Ltd

19 Barton Lane
Abingdon Science Park
Abingdon, OX14 3NB, United Kingdom
Phone: (44) (0) 1235 529449
Free Phone: 0800 37 34 15
Fax: (44) (0) 1235 533420
info.EMEA@bio-techne.com

General Contact Information

www.novusbio.com
Technical Support: nb-technical@bio-techne.com
Orders: nb-customerservice@bio-techne.com
General: novus@novusbio.com

Products Related to NBP2-44525-0.1mg

HAF007	Goat anti-Mouse IgG Secondary Antibody [HRP]
NB720-B	Rabbit anti-Mouse IgG (H+L) Secondary Antibody [Biotin]
NBP1-96981-0.5mg	Mouse IgG2a Kappa Isotype Control (M2AK)
NBP2-22976	Recombinant Human p21/CIP1/CDKN1A His Protein

Limitations

This product is for research use only and is not approved for use in humans or in clinical diagnosis. Primary Antibodies are guaranteed for 1 year from date of receipt.

For more information on our 100% guarantee, please visit www.novusbio.com/guarantee

Earn gift cards/discounts by submitting a review: www.novusbio.com/reviews/submit/NBP2-44525

Earn gift cards/discounts by submitting a publication using this product:
www.novusbio.com/publications

