

# Product Datasheet

## Mitochondria Antibody (AE-1)

### NBP2-44371-0.1mg

Unit Size: 0.1 mg

Store at 4C.

[www.novusbio.com](http://www.novusbio.com)



[technical@novusbio.com](mailto:technical@novusbio.com)

Protocols, Publications, Related Products, Reviews, Research Tools and Images at:  
[www.novusbio.com/NBP2-44371](http://www.novusbio.com/NBP2-44371)

Updated 10/23/2024 v.20.1

Earn rewards for product  
reviews and publications.

Submit a publication at [www.novusbio.com/publications](http://www.novusbio.com/publications)

Submit a review at [www.novusbio.com/reviews/destination/NBP2-44371](http://www.novusbio.com/reviews/destination/NBP2-44371)



**NBP2-44371-0.1mg**

Mitochondria Antibody (AE-1)

Product Information	
Unit Size	0.1 mg
Concentration	0.2 mg/ml
Storage	Store at 4C.
Clonality	Monoclonal
Clone	AE-1
Preservative	0.05% Sodium Azide
Isotype	IgG1 Kappa
Purity	Protein A or G purified
Buffer	10 mM PBS with 0.05% BSA
Target Molecular Weight	60 kDa

Product Description	
Description	200ug/ml of antibody purified from Bioreactor Concentrate by Protein A or G. Prepared in 10 mM PBS with 0.05% BSA & 0.05% azide. Also available WITHOUT BSA at 1.0 mg/ml. (NBP3-11466)  Antibody with azide - store at 2 to 8C. Antibody without azide - store at -20 to -80 C.
Host	Mouse
Species	Human, Mouse (Negative), Rat (Negative)
Reactivity Notes	Does not react with Mouse and Rat.
Marker	Marker for Human Cells
Specificity/Sensitivity	monoclonal antibody MTC02 recognizes a 60kDa antigen associated with the mitochondria in human cells. It is a part of a new panel of reagents, which recognizes subcellular organelles or compartments of human cells. These markers may be useful in identification of these organelles in cells, tissues, and biochemical preparations. monoclonal antibody MTC02 recognizes an antigen associated with the mitochondria in human cells only. It can be used to stain the mitochondria in cell or tissue preparations and can be used as a mitochondrial marker in subcellular fractions. It produces a spaghetti-like pattern in normal and malignant cells and may be used to stain mitochondria of cells in fixed or frozen tissue sections. It can also be used with paraformaldehyde fixed frozen tissue or cell preparations. monoclonal antibody MTC02 is an excellent marker for human cells in xenographic model research. It reacts specifically with human cells, including neurons and embryonic stem cells.
Immunogen	Semi-Purified mitochondrial preparation

Product Application Details	
Applications	Western Blot, ELISA, Immunocytochemistry/ Immunofluorescence, Immunohistochemistry, Immunohistochemistry-Paraffin
Recommended Dilutions	Western Blot 0.25-0.5 ug/ml, ELISA, Immunohistochemistry, Immunocytochemistry/ Immunofluorescence 0.5-1 ug/ml, Immunohistochemistry-Paraffin 0.5-1 ug/ml

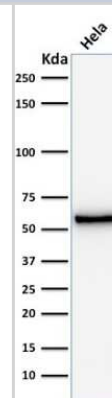


**Application Notes**

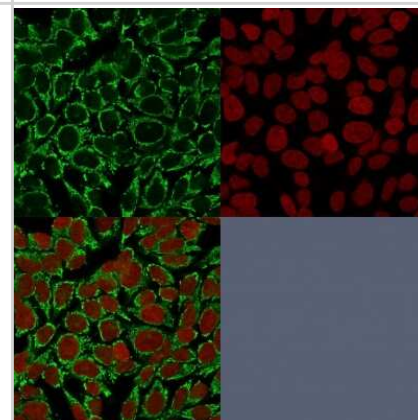
Immunohistochemistry (Formalin-fixed): 0.5-1ug/ml for 30 minutes at RT.  
 Staining of formalin-fixed tissues requires heating tissue sections in 10mM Tris with 1mM EDTA, pH 9.0, for 45 min at 95C followed by cooling at RT for 20 minutes.  
 Optimal dilution for a specific application should be determined.

**Images**

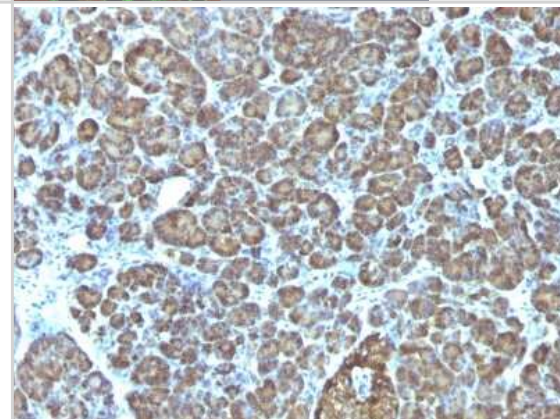
Western Blot: Mitochondria Antibody (AE-1) [NBP2-44371] - Western Blot Analysis of HeLa cell lysate using Mitochondria Antibody (AE-1).



Immunocytochemistry/Immunofluorescence: Mitochondria Antibody (AE-1) [NBP2-44371] - Confocal immunofluorescence image of HeLa cells using Mitochondria Antibody (AE-1) Green (CF488) and Red Dot is used to label the nuclei Red.



Immunohistochemistry-Paraffin: Mitochondria Antibody (AE-1) [NBP2-44371] - Formalin-fixed, paraffin-embedded human Pancreas stained with Mitochondria Antibody (AE-1).



Immunohistochemistry-Paraffin: Mitochondria Antibody (AE-1) [NBP2-44371] - Formalin-fixed, paraffin-embedded human Tonsil stained with Mitochondria Antibody (AE-1).





### **Novus Biologicals USA**

10730 E. Briarwood Avenue  
Centennial, CO 80112  
USA  
Phone: 303.730.1950  
Toll Free: 1.888.506.6887  
Fax: 303.730.1966  
nb-customerservice@bio-techne.com

### **Bio-Techne Canada**

21 Canmotor Ave  
Toronto, ON M8Z 4E6  
Canada  
Phone: 905.827.6400  
Toll Free: 855.668.8722  
Fax: 905.827.6402  
canada.inquires@bio-techne.com

### **Bio-Techne Ltd**

19 Barton Lane  
Abingdon Science Park  
Abingdon, OX14 3NB, United Kingdom  
Phone: (44) (0) 1235 529449  
Free Phone: 0800 37 34 15  
Fax: (44) (0) 1235 533420  
info.EMEA@bio-techne.com

### **General Contact Information**

www.novusbio.com  
Technical Support: nb-technical@bio-techne.com  
Orders: nb-customerservice@bio-techne.com  
General: novus@novusbio.com

### **Products Related to NBP2-44371-0.1mg**

---

HAF007	Goat anti-Mouse IgG Secondary Antibody [HRP]
NB720-B	Rabbit anti-Mouse IgG (H+L) Secondary Antibody [Biotin]
NBP1-43319-0.5mg	Mouse IgG1 Kappa Isotype Control (P3.6.2.8.1)
NBP2-29448	Mitochondria Isolation Kit

---

### **Limitations**

This product is for research use only and is not approved for use in humans or in clinical diagnosis. Primary Antibodies are guaranteed for 1 year from date of receipt.

For more information on our 100% guarantee, please visit [www.novusbio.com/guarantee](http://www.novusbio.com/guarantee)

Earn gift cards/discounts by submitting a review: [www.novusbio.com/reviews/submit/NBP2-44371](http://www.novusbio.com/reviews/submit/NBP2-44371)

Earn gift cards/discounts by submitting a publication using this product:

[www.novusbio.com/publications](http://www.novusbio.com/publications)

