

Product Datasheet

GDF-15 Antibody (6D12.H10.E4) - C-terminus - BSA Free NBP2-44214

Unit Size: 0.1 mg

Store at -20C short term. Aliquot and store at -80C long term. Avoid freeze-thaw cycles.

www.novusbio.com



technical@novusbio.com

Publications: 1

Protocols, Publications, Related Products, Reviews, Research Tools and Images at:
www.novusbio.com/NBP2-44214

Updated 2/23/2025 v.20.1

Earn rewards for product
reviews and publications.

Submit a publication at www.novusbio.com/publications

Submit a review at www.novusbio.com/reviews/destination/NBP2-44214



NBP2-44214

GDF-15 Antibody (6D12.H10.E4) - C-terminus - BSA Free

Product Information	
Unit Size	0.1 mg
Concentration	Please see the vial label for concentration. If unlisted please contact technical services.
Storage	Store at -20C short term. Aliquot and store at -80C long term. Avoid freeze-thaw cycles.
Clonality	Monoclonal
Clone	6D12.H10.E4
Preservative	0.01% Sodium Azide
Isotype	IgG2a Lambda
Purity	Protein G purified
Buffer	0.02 M Potassium Phosphate, 0.15 M Sodium Chloride, pH 7.2

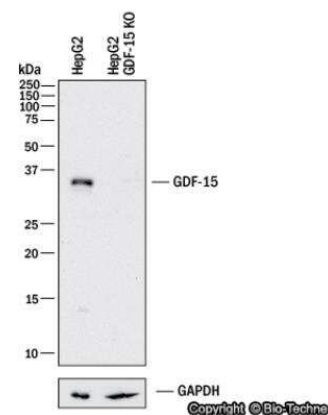
Product Description	
Description	<p>This product was purified from concentrated tissue culture supernatant Protein G chromatography</p> <p>Store vial at -20C prior to opening. Aliquot contents and freeze at -20C or below for extended storage. Avoid cycles of freezing and thawing. Centrifuge product if not completely clear after standing at room temperature. This product is stable for several weeks at 4C as an undiluted liquid. Dilute only prior to immediate use.</p>
Host	Rat
Gene ID	9518
Gene Symbol	GDF15
Species	Human, Mouse
Reactivity Notes	A BLAST analysis suggests reactivity with GDF-15 from chimpanzee and macaque based on a 100% homology. Partial reactivity is expected against rat based on an 86% homology with the immunizing sequence. Cross-reactivity with GDF-15 from other sources has not been determined.
Specificity/Sensitivity	This antibody reacts with the C-terminus of endogenous GDF-15 protein from mouse tissues. A BLAST analysis suggests reactivity with GDF-15 from chimpanzee and macaque based on a 100% homology. Partial reactivity is expected against rat based on an 86% homology with the immunizing sequence. Cross-reactivity with GDF-15 from other sources has not been determined.
Immunogen	This Protein-A purified GDF-15 Antibody (6D12.H10.E4) was prepared by repeated immunizations with an MBP-tagged recombinant protein produced in E.coli corresponding to C-term mouse NAG-1 protein. Cross reactivity to MBP is negative. (Uniprot: Q99988)

Product Application Details	
Applications	Western Blot, ELISA, Knockdown Validated
Recommended Dilutions	Western Blot 1:1000, ELISA 1:2000, Knockdown Validated
Application Notes	This Protein G This product has been tested by ELISA, SDS-PAGE, and western blot for mouse NAG-1 protein. Specific conditions for reactivity should be optimized by the end user. Expect bands in Western blots of native protein of approximately ~58kDa using the appropriate cell lysate or extract.

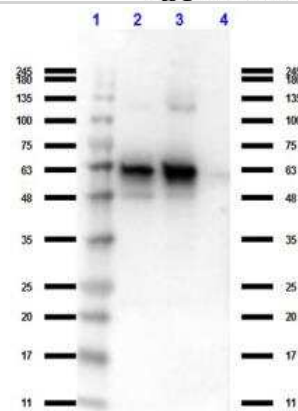


Images

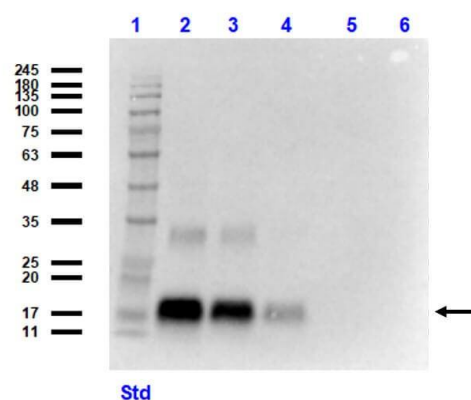
Western Blot: GDF-15 Antibody (6D12.H10.E4) [NBP2-44214] - Western blot shows lysates of HepG2 human liver carcinoma parental cell line and GDF-15 knockout (KO) HepG2 cell line. PVDF membrane was probed with 1:250 of Rat Anti-Human GDF-15 Polyclonal Antibody (Catalog # NBP2-44214) followed by HRP-conjugated Anti-Rat IgG Secondary Antibody (Catalog #HAF006). Specific band was detected for GDF-15 at approximately 33 kDa (as indicated) in the parental HepG2 cell line, but is not detectable in the knockout HepG2 cell line. This experiment was conducted under reducing conditions.



Western Blot: GDF-15 Antibody (6D12.H10.E4) [NBP2-44214] - Analysis of Rat Anti-Nag 1 (C terminal specific). Lane 1: Protein Standard Opal Pre-stained. Lane 2: MBP-NAG-1 fusion protein 1. Lane 3: MBP-NAG-1 fusion protein 2. Lane 4: MBP. Load 40ng. Primary Antibody: Rat anti-Nag 1 (C terminal specific). Secondary Antibody: Rat IgG (H&L) Antibody Peroxidase Conjugated Pre-Adsorbed.



Western Blot of GDF-15 Antibody (6D12.H10.E4) - C-terminus. Lane 1: Opal Prestained Molecular Weight Marker



Publications

L'homme, L;Sermikli, BP;Haas, JT;Fleury, S;Quemener, S;Guinot, V;Barreby, E;Esser, N;Caiazzo, R;Verkindt, H;Legendre, B;Raverdy, V;Cheval, L;Paquot, N;Piette, J;Legrand-Poels, S;Aouadi, M;Pattou, F;Staels, B;Dombrowicz, D; Adipose tissue macrophage infiltration and hepatocyte stress increase GDF-15 throughout development of obesity to MASH Nature communications 2024-08-21 [PMID: 39169003]



Novus Biologicals USA

10730 E. Briarwood Avenue
Centennial, CO 80112
USA
Phone: 303.730.1950
Toll Free: 1.888.506.6887
Fax: 303.730.1966
nb-customerservice@bio-techne.com

Bio-Techne Canada

21 Canmotor Ave
Toronto, ON M8Z 4E6
Canada
Phone: 905.827.6400
Toll Free: 855.668.8722
Fax: 905.827.6402
canada.inquires@bio-techne.com

Bio-Techne Ltd

19 Barton Lane
Abingdon Science Park
Abingdon, OX14 3NB, United Kingdom
Phone: (44) (0) 1235 529449
Free Phone: 0800 37 34 15
Fax: (44) (0) 1235 533420
info.EMEA@bio-techne.com

General Contact Information

www.novusbio.com
Technical Support: nb-technical@bio-techne.com
Orders: nb-customerservice@bio-techne.com
General: novus@novusbio.com

Products Related to NBP2-44214

HAF005	Goat anti-Rat IgG Secondary Antibody [HRP]
F0105B	Goat anti-Rat IgG Secondary Antibody [Phycoerythrin]
NBP2-31382	Rat IgG2a Lambda Isotype Control (RG2aL)
NBP1-30273	Recombinant Human GDF-15 His Protein

Limitations

This product is for research use only and is not approved for use in humans or in clinical diagnosis. Primary Antibodies are guaranteed for 1 year from date of receipt.

For more information on our 100% guarantee, please visit www.novusbio.com/guarantee

Earn gift cards/discounts by submitting a review: www.novusbio.com/reviews/submit/NBP2-44214

Earn gift cards/discounts by submitting a publication using this product:
www.novusbio.com/publications

