

Product Datasheet

NEDD9/CASL/HEF1 Antibody (14A11) - (82-398 aa) - BSA Free NBP2-44192-0.05mg

Unit Size: 0.05 mg

Store at -20C short term. Aliquot and store at -80C long term. Avoid freeze-thaw cycles.

www.novusbio.com



technical@novusbio.com

Protocols, Publications, Related Products, Reviews, Research Tools and Images at:
www.novusbio.com/NBP2-44192

Updated 2/23/2025 v.20.1

Earn rewards for product
reviews and publications.

Submit a publication at www.novusbio.com/publications

Submit a review at www.novusbio.com/reviews/destination/NBP2-44192



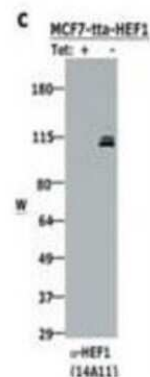
NBP2-44192-0.05mg

NEDD9/CASL/HEF1 Antibody (14A11) - (82-398 aa) - BSA Free

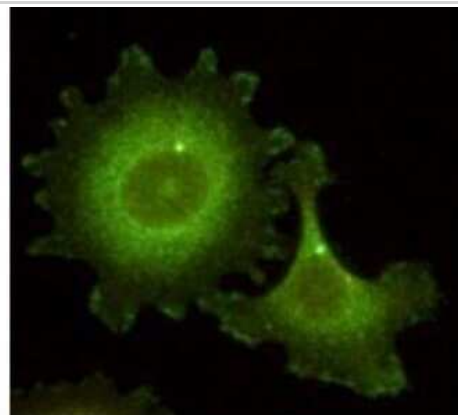
Product Information	
Unit Size	0.05 mg
Concentration	Please see the vial label for concentration. If unlisted please contact technical services.
Storage	Store at -20C short term. Aliquot and store at -80C long term. Avoid freeze-thaw cycles.
Clonality	Monoclonal
Clone	14A11
Preservative	0.01% Sodium Azide
Isotype	IgG2b Kappa
Purity	Protein A purified
Buffer	0.02 M Potassium Phosphate, 0.15 M Sodium Chloride, pH 7.2
Product Description	
Description	<p>This Protein A purified antibody is directed against human NEDD9/CASL/HEF1 protein. The product was purified from tissue culture supernatant by chromatography</p> <p>Store vial at -20C prior to opening. Aliquot contents and freeze at -20C or below for extended storage. Avoid cycles of freezing and thawing. Centrifuge product if not completely clear after standing at room temperature. This product is stable for several weeks at 4C as an undiluted liquid. Dilute only prior to immediate use.</p>
Host	Mouse
Gene ID	4739
Gene Symbol	NEDD9
Species	Human
Reactivity Notes	Reactivity against homologues from other sources is not known
Specificity/Sensitivity	This Protein A purified antibody is directed against human HEF1 protein. This antibody has only been tested on human cells. Reactivity against multiple isoforms is expected. Reactivity against homologues from other sources is not known. Specificity was determined by partial epitope mapping.
Immunogen	NEDD9/CASL/NEDD9/CASL/HEF1 Antibody (14A11) was produced by repeated immunizations with a synthetic peptide corresponding to amino acid residues 82-398 of human NEDD9/CASL/HEF1 protein. (Uniprot: Q14511)
Product Application Details	
Applications	Western Blot, ELISA, Immunocytochemistry/ Immunofluorescence, Immunoprecipitation
Recommended Dilutions	Western Blot 1:500, ELISA 1:5000-1:20000, Immunocytochemistry/ Immunofluorescence 1:100, Immunoprecipitation 1:100
Application Notes	This monoclonal antibody has been tested for use in western blotting, immunoprecipitation and immunofluorescence. This clone recognizes HEF1 under non-denaturing conditions. Specific conditions for reactivity should be optimized by the end user. Expect bands approximately 115 and 105 in size corresponding to isoforms of HEF1 protein by western blotting in the appropriate cell lysate or extract. This antibody does not recognize p130Cas. Sin1 has not been tested. IF was performed using 4% PFA fixed cells. This monoclonal mostly detects HEF1 localized at the focal adhesion sites.

Images

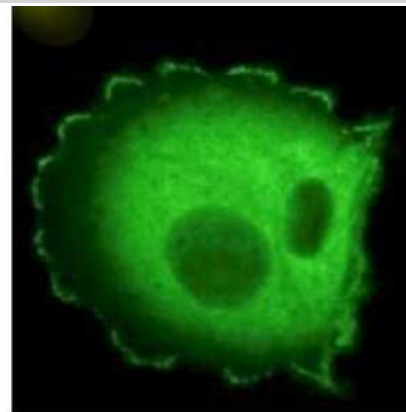
Western Blot: NEDD9/CASL/HEF1 Antibody (14A11) - (82-398 aa) [NBP2-44192] - Analysis of anti-HEF1 antibody (clone 14A11) shows detection of HEF1 present in MCF-7 cells induced to express HEF1 by tetracycline removal (right lane).



Immunocytochemistry/Immunofluorescence: NEDD9/CASL/HEF1 Antibody (14A11) - (82-398 aa) [NBP2-44192] - Detection of HEF1 localized at the centrosome (bright dots) and focal adhesion sites. The antibody was used at a 1:100 dilution with a 1-min exposure time.



Immunocytochemistry/Immunofluorescence: NEDD9/CASL/HEF1 Antibody (14A11) - (82-398 aa) [NBP2-44192] - Detection of HEF1 localized at focal adhesion sites. Per Elena Pugacheva, Fox Chase Cancer Center, Philadelphia, PA.





Novus Biologicals USA

10730 E. Briarwood Avenue
Centennial, CO 80112
USA
Phone: 303.730.1950
Toll Free: 1.888.506.6887
Fax: 303.730.1966
nb-customerservice@bio-techne.com

Bio-Techne Canada

21 Canmotor Ave
Toronto, ON M8Z 4E6
Canada
Phone: 905.827.6400
Toll Free: 855.668.8722
Fax: 905.827.6402
canada.inquires@bio-techne.com

Bio-Techne Ltd

19 Barton Lane
Abingdon Science Park
Abingdon, OX14 3NB, United Kingdom
Phone: (44) (0) 1235 529449
Free Phone: 0800 37 34 15
Fax: (44) (0) 1235 533420
info.EMEA@bio-techne.com

General Contact Information

www.novusbio.com
Technical Support: nb-technical@bio-techne.com
Orders: nb-customerservice@bio-techne.com
General: novus@novusbio.com

Products Related to NBP2-44192-0.05mg

HAF007	Goat anti-Mouse IgG Secondary Antibody [HRP]
NB720-B	Rabbit anti-Mouse IgG (H+L) Secondary Antibody [Biotin]
NBP1-43317-0.5mg	Mouse IgG2b Kappa Light Chain Isotype Control (MG2b)
H00004739-P01-10ug	Recombinant Human NEDD9/CASL/HEF1 GST (N-Term) Protein

Limitations

This product is for research use only and is not approved for use in humans or in clinical diagnosis. Primary Antibodies are guaranteed for 1 year from date of receipt.

For more information on our 100% guarantee, please visit www.novusbio.com/guarantee

Earn gift cards/discounts by submitting a review: www.novusbio.com/reviews/submit/NBP2-44192

Earn gift cards/discounts by submitting a publication using this product:
www.novusbio.com/publications

