

Product Datasheet

Bromodeoxyuridine/BrdU Antibody (29G6.E8) - BSA Free NBP2-44055-0.05mg

Unit Size: 0.05 mg

Store at -20C. Avoid freeze-thaw cycles.

www.novusbio.com



technical@novusbio.com

Publications: 1

Protocols, Publications, Related Products, Reviews, Research Tools and Images at:
www.novusbio.com/NBP2-44055

Updated 2/23/2025 v.20.1

Earn rewards for product
reviews and publications.

Submit a publication at www.novusbio.com/publications

Submit a review at www.novusbio.com/reviews/destination/NBP2-44055



NBP2-44055-0.05mg

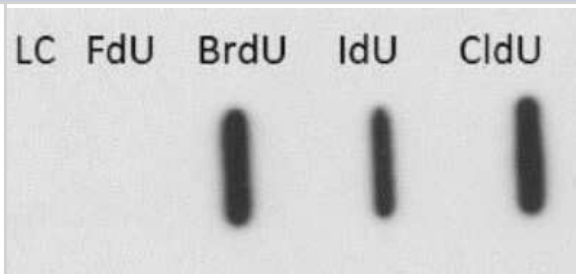
Bromodeoxyuridine/BrdU Antibody (29G6.E8) - BSA Free

Product Information	
Unit Size	0.05 mg
Concentration	Please see the vial label for concentration. If unlisted please contact technical services.
Storage	Store at -20C. Avoid freeze-thaw cycles.
Clonality	Monoclonal
Clone	29G6.E8
Preservative	0.01% Sodium Azide
Isotype	IgG1 Lambda
Purity	Protein A purified
Buffer	0.02 M Potassium Phosphate, 0.15 M Sodium Chloride, pH 7.2
Product Description	
Description	<p>This antibody Monoclonal Antibody was purified from ascites fluid by Protein A chromatography</p> <p>Store this antibody at -20C prior to opening. Aliquot contents and freeze at -20C or below for extended storage. Avoid cycles of freezing and thawing. Centrifuge product if not completely clear after standing at room temperature. This product is stable for several weeks at 4C as an undiluted liquid. Dilute only prior to immediate use.</p>
Host	Mouse
Species	Non-species specific
Specificity/Sensitivity	This antibody reacts strongly with Bromodeoxyuridine/BrdU. Cross-reactivity is observed with CldU and IdU.
Immunogen	Bromodeoxyuridine/Bromodeoxyuridine/BrdU antibody (29G6.E8) was produced in mice by repeated immunizations prepared via immunizations with BromodeoxyUridine-KLH followed by hybridoma development.
Product Application Details	
Applications	Western Blot, Dot Blot, ELISA, Flow Cytometry, Immunocytochemistry/Immunofluorescence, Immunohistochemistry
Recommended Dilutions	Western Blot 1:2000-1:5000, Flow Cytometry 1:50-1:100, ELISA 1:2000-1:10000, Immunohistochemistry 1:100-1:500, Immunocytochemistry/Immunofluorescence 1:500-1:3000, Dot Blot
Application Notes	This product has been tested as suitable for immunofluorescence and immunoblot assays. Antibody may be suitable for additional immunoassays including flow cytometry and immunohistochemistry. Specific conditions for reactivity should be optimized by the end user. Antibody will detect incorporated BrdU thymidine analog from replicated cells.

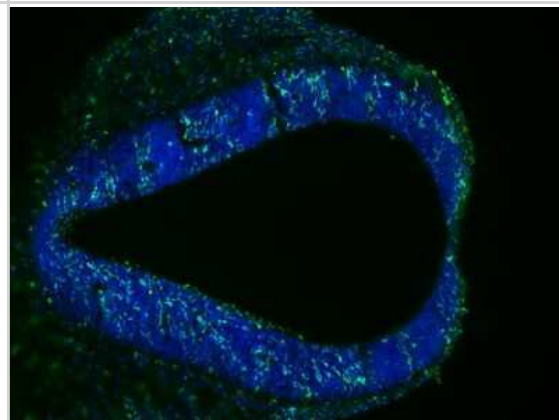


Images

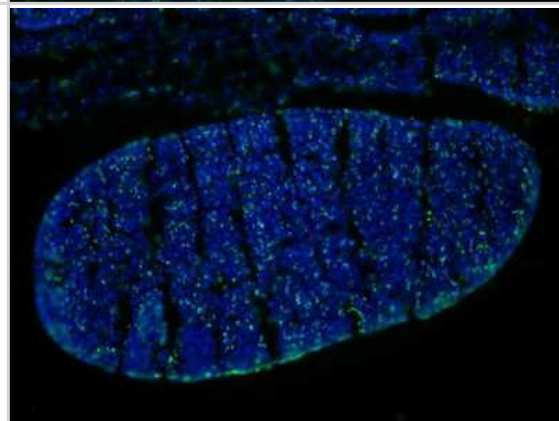
Western Blot: Bromodeoxyuridine/BrdU Antibody (29G6.E8) [NBP2-44055] - Lane 1: loading control. Lane 2: FdU. Lane 3: BrdU. Lane 4: IdU. Lane 5 CldU. Load: 20 Ug per lane.



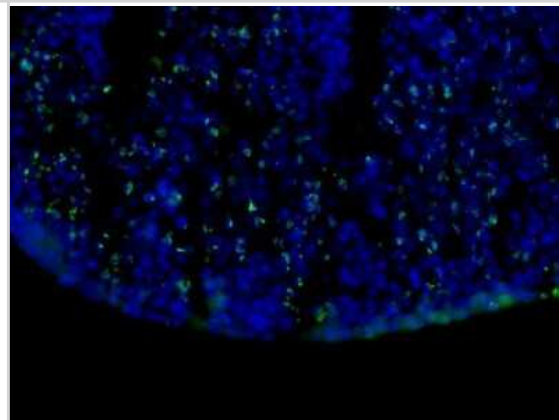
Immunocytochemistry/Immunofluorescence: Bromodeoxyuridine/BrdU Antibody (29G6.E8) [NBP2-44055] - Tissue: OCT-embedded E10.5 mouse embryo. Localization: 20X, section through the developing hindbrain. Fixation: 4% PFA. Antigen retrieval: not required. Staining: Double labeled (green/blue) cells represent cells that were actively dividing.



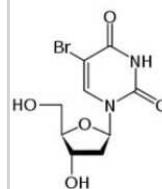
Immunocytochemistry/Immunofluorescence: Bromodeoxyuridine/BrdU Antibody (29G6.E8) [NBP2-44055] - Tissue: OCT-embedded E10.5 mouse embryo. Localization: 20X, section through the developing limb bud. Fixation: 4% PFA. Antigen retrieval: not required.



Immunocytochemistry/Immunofluorescence: Bromodeoxyuridine/BrdU Antibody (29G6.E8) [NBP2-44055] - Tissue: OCT-embedded E10.5 mouse embryo. Localization: 40X, section through the developing limb bud. Fixation: 4% PFA. Antigen retrieval: not required. Primary antibody: BrdU antibody at 1:500 in 0.4% PBS+Triton with 1% normal sheep serum overnight at 4C. Staining: Double labeled (green/blue) cells represent cells that were actively dividing.



Bromodeoxyuridine/BrdU Antibody (29G6.E8) [NBP2-44055]



Publications

Lazarchuk P, Nguyen MM, Curca CM et Al. Werner syndrome RECQ helicase participates in and directs maintenance of the protein complexes of constitutive heterochromatin in proliferating human cells Aging (Albany NY) 2024-10-31 [PMID: 39422615]





Novus Biologicals USA

10730 E. Briarwood Avenue
Centennial, CO 80112
USA
Phone: 303.730.1950
Toll Free: 1.888.506.6887
Fax: 303.730.1966
nb-customerservice@bio-techne.com

Bio-Techne Canada

21 Canmotor Ave
Toronto, ON M8Z 4E6
Canada
Phone: 905.827.6400
Toll Free: 855.668.8722
Fax: 905.827.6402
canada.inquires@bio-techne.com

Bio-Techne Ltd

19 Barton Lane
Abingdon Science Park
Abingdon, OX14 3NB, United Kingdom
Phone: (44) (0) 1235 529449
Free Phone: 0800 37 34 15
Fax: (44) (0) 1235 533420
info.EMEA@bio-techne.com

General Contact Information

www.novusbio.com
Technical Support: nb-technical@bio-techne.com
Orders: nb-customerservice@bio-techne.com
General: novus@novusbio.com

Products Related to NBP2-44055-0.05mg

HAF007	Goat anti-Mouse IgG Secondary Antibody [HRP]
NB720-B	Rabbit anti-Mouse IgG (H+L) Secondary Antibody [Biotin]
NBP1-96982	Mouse IgG1 Lambda Isotype Control (MG1L)
NBP3-07125	Bromodeoxyuridine/BrdU MCF-7 Cell Line Slides (Adult Adenocarcinoma)- Paraffin

Limitations

This product is for research use only and is not approved for use in humans or in clinical diagnosis. Primary Antibodies are guaranteed for 1 year from date of receipt.

For more information on our 100% guarantee, please visit www.novusbio.com/guarantee

Earn gift cards/discounts by submitting a review: www.novusbio.com/reviews/submit/NBP2-44055

Earn gift cards/discounts by submitting a publication using this product:
www.novusbio.com/publications

