

# Product Datasheet

## Tubulin alpha-1B Antibody (114) - Azide and BSA Free NBP2-43837

Unit Size: 0.1 ml

Aliquot and store at -20C or -80C. Avoid freeze-thaw cycles.

[www.novusbio.com](http://www.novusbio.com)



[technical@novusbio.com](mailto:technical@novusbio.com)

Protocols, Publications, Related Products, Reviews, Research Tools and Images at:  
[www.novusbio.com/NBP2-43837](http://www.novusbio.com/NBP2-43837)

Updated 9/9/2025 v.20.1

Earn rewards for product  
reviews and publications.

Submit a publication at [www.novusbio.com/publications](http://www.novusbio.com/publications)

Submit a review at [www.novusbio.com/reviews/destination/NBP2-43837](http://www.novusbio.com/reviews/destination/NBP2-43837)



**NBP2-43837**

Tubulin alpha-1B Antibody (114) - Azide and BSA Free

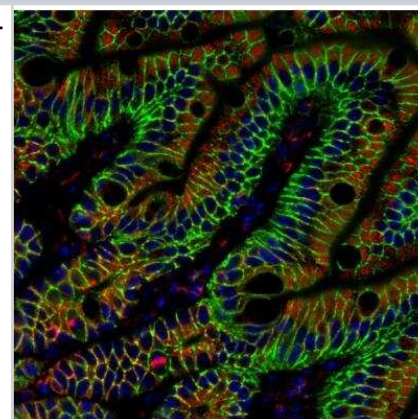
Product Information	
<b>Unit Size</b>	0.1 ml
<b>Concentration</b>	Concentrations vary lot to lot. See vial label for concentration. If unlisted please contact technical services.
<b>Storage</b>	Aliquot and store at -20C or -80C. Avoid freeze-thaw cycles.
<b>Clonality</b>	Monoclonal
<b>Clone</b>	114
<b>Preservative</b>	No Preservative
<b>Isotype</b>	IgG2a
<b>Purity</b>	Protein A purified
<b>Buffer</b>	PBS, 20% Glycerol
<b>Target Molecular Weight</b>	50 kDa

Product Description	
<b>Description</b>	Novus Biologicals Mouse Tubulin alpha-1B Antibody (114) - Azide and BSA Free (NBP2-43837) is a monoclonal antibody validated for use in IHC, WB, Flow and ICC/IF. All Novus Biologicals antibodies are covered by our 100% guarantee.
<b>Host</b>	Mouse
<b>Gene ID</b>	10376
<b>Gene Symbol</b>	TUBA1B
<b>Species</b>	Human, Mouse, Rat, Drosophila, Fish, Goat, Zebrafish
<b>Reactivity Notes</b>	Xenopus laevis (95%).
<b>Immunogen</b>	Recombinant protein encompassing a sequence within the center region of human Tubulin alpha-1B. The exact sequence is proprietary.

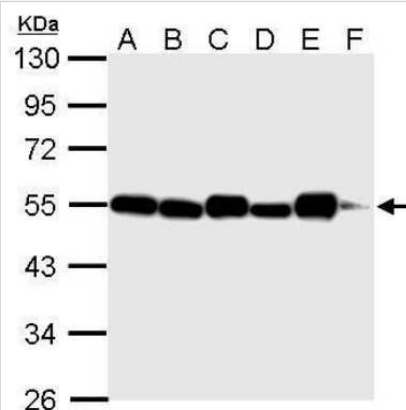
Product Application Details	
<b>Applications</b>	Western Blot, Immunohistochemistry-Paraffin, Flow Cytometry, Immunocytochemistry/ Immunofluorescence, Immunohistochemistry, Immunohistochemistry-Frozen
<b>Recommended Dilutions</b>	Western Blot 1:500-1:20000, Flow Cytometry Assay dependent, Immunohistochemistry 1:100-1:1000, Immunocytochemistry/ Immunofluorescence 1:100-1:1000, Immunohistochemistry-Paraffin 1:100-1:1000, Immunohistochemistry-Frozen 1:100-1:1000

**Images**

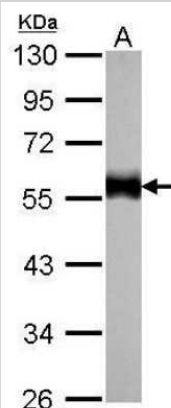
Immunohistochemistry-Paraffin: Tubulin alpha-1B Antibody (114) [NBP2-43837] - Paraffin-embedded mouse colon. Red: alpha Tubulin antibody [114] diluted at 1:500. Green: beta Catenin antibody [N1N2-2] (NBP1-32239) diluted at 1:500. Blue: Hoechst 33342 staining.



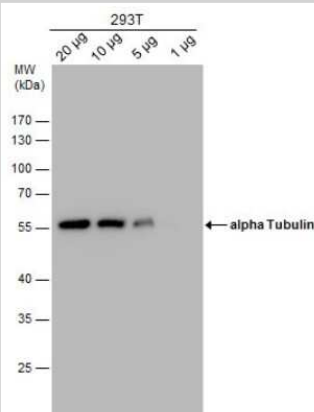
Western Blot: Tubulin alpha-1B Antibody (114) [NBP2-43837] - Analysis of A. 30 ug 293T whole cell lysate/extract B. 30 ug NIH-3T3 whole cell lysate/extract C. 30 ug mouse brain lysate/extract D. 30 ug PC-12 whole cell lysate/extract E. 30 ug rat brain lysate/extract F. 30 ug drosophila lysae/extract 10 % SDS-PAGE alpha Tubulin antibody [114] dilution: 1:5000.



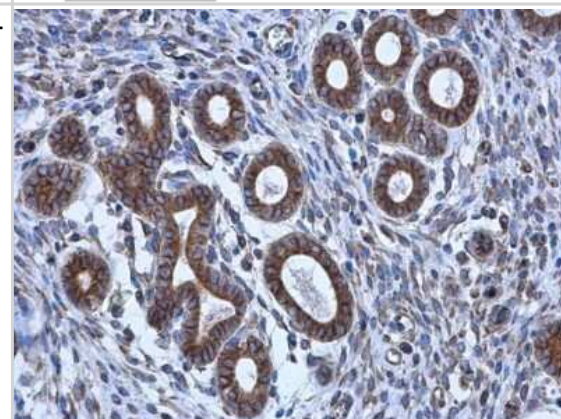
Western Blot: Tubulin alpha-1B Antibody (114) [NBP2-43837] - Analysis of A. 30 ug zebrafish eye lysate/extract 10 % SDS-PAGE alpha Tubulin antibody [114] dilution: 1:1000.



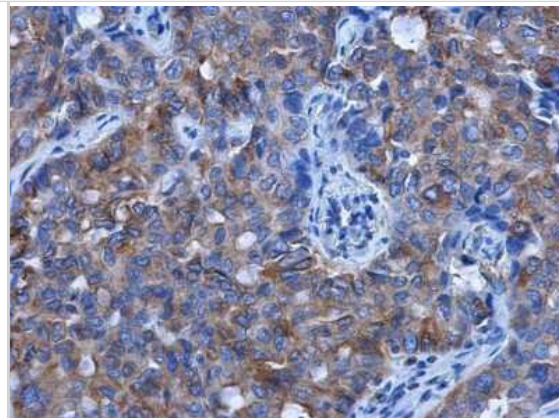
Western Blot: Tubulin alpha-1B Antibody (114) [NBP2-43837] - Analysis of varied amount of 293T Whole cell extracts was separated by 10% SDS-PAGE, and the membrane was blotted with alpha Tubulin antibody at a dilution of 1:10000.



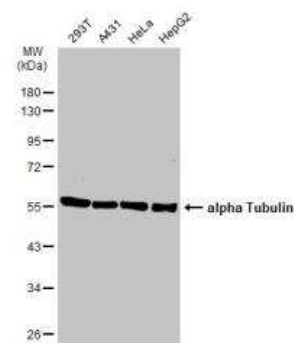
Immunohistochemistry-Paraffin: Tubulin alpha-1B Antibody (114) [NBP2-43837] - Analysis of human cervix. alpha Tubulin antibody [114] diluted at 1:500.



Immunohistochemistry-Paraffin: Tubulin alpha-1B Antibody (114) [NBP2-43837] - Analysis of human lung cancer. alpha Tubulin antibody [114] diluted at 1:500.

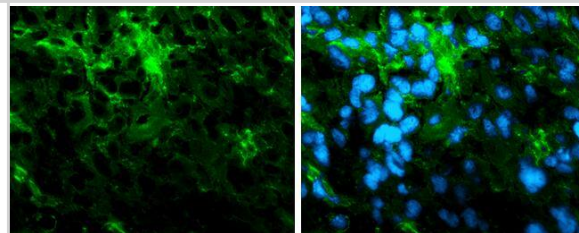


Western Blot: Tubulin alpha-1B Antibody (114) [NBP2-43837] -Various whole cell extracts (30 ug) were separated by 10% SDS-PAGE, and the membrane was blotted with Tubulin alpha-1B Antibody (114) diluted at 1:10000. HRP-conjugated anti-mouse IgG antibody was used to detect the primary antibody.



Immunofluorescence photomicrographs of frozen sections of mouse brain.

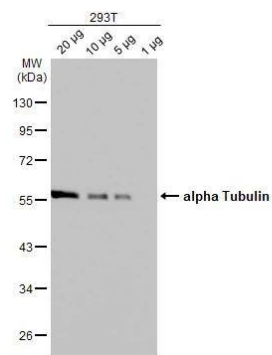
Green: alpha Tubulin antibody [GT114] (NBP2-43837) diluted at 1:200. The signal was developed using goat anti-rmouse IgG antibody (Dylight488) .  
Blue: Nuclear staining with Hoechst 33342.



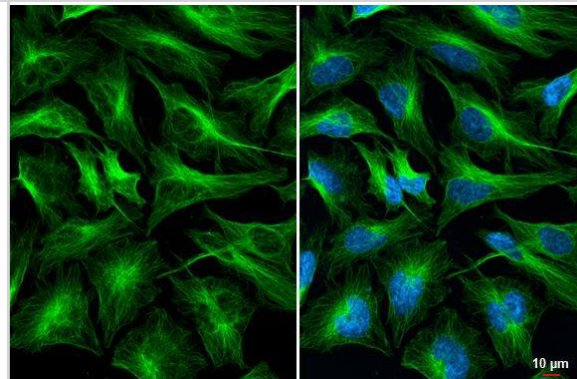
Whole cell extract (30 ug) was separated by 10% SDS-PAGE, and the membrane was blotted with alpha Tubulin antibody [GT114] (NBP2-43837) diluted at 1:10000. The HRP-conjugated anti-mouse IgG antibody was used to detect the primary antibody.



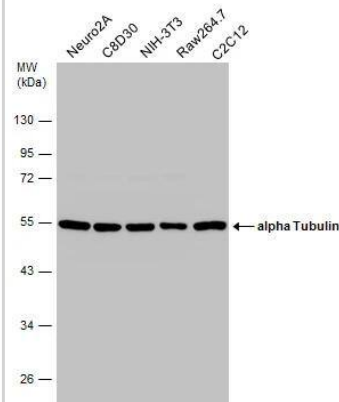
293T whole cell extracts were separated by 10% SDS-PAGE, and the membrane was blotted with alpha Tubulin antibody [GT114] (NBP2-43837) diluted at 1:10000. The HRP-conjugated anti-mouse IgG antibody was used to detect the primary antibody.



alpha Tubulin antibody [GT114] detects alpha Tubulin protein at cytoskeleton by immunofluorescent analysis. Sample: HeLa cells were fixed in 4% paraformaldehyde at RT for 15 min. Green: alpha Tubulin stained by alpha Tubulin antibody [GT114] (NBP2-43837) diluted at 1:1000. Blue: Fluoroshield with DAPI .



Various whole cell extracts (30 ug) were separated by 10% SDS-PAGE, and the membrane was blotted with alpha Tubulin antibody [GT114] (NBP2-43837) diluted at 1:10000. The HRP-conjugated anti-mouse IgG antibody was used to detect the primary antibody.



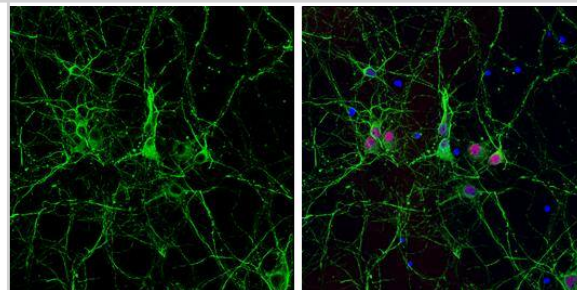
alpha Tubulin antibody [GT114] detects alpha Tubulin protein expression by immunofluorescent analysis.

Sample: Cultured rat E18 primary cortical neuron, DIV 8. Cells were fixed in 4% paraformaldehyde at RT for 15 min.

Green: alpha Tubulin protein stained by alpha Tubulin antibody [GT114] (NBP2-43837) diluted at 1:250.

Red: NeuN, stained by NeuN antibody diluted at 1:250.

Blue: Fluoroshield with DAPI .

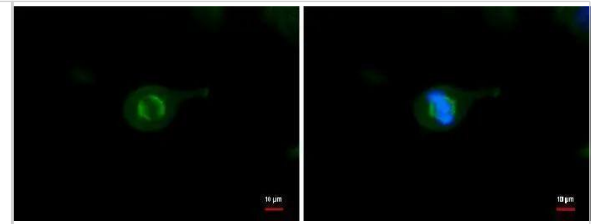


TUBA1B antibody detects TUBA1B protein at Cytoskeleton by immunofluorescent analysis.

Sample: HeLa cells were fixed in -20C 100% methanol for 5 min.

Green: TUBA1B protein stained by TUBA1B antibody (NBP2-43837) diluted at 1:500.

Blue: Hoechst 33342 staining.





### **Novus Biologicals USA**

10730 E. Briarwood Avenue  
Centennial, CO 80112  
USA  
Phone: 303.730.1950  
Toll Free: 1.888.506.6887  
Fax: 303.730.1966  
nb-customerservice@bio-techne.com

### **Bio-Techne Canada**

21 Canmotor Ave  
Toronto, ON M8Z 4E6  
Canada  
Phone: 905.827.6400  
Toll Free: 855.668.8722  
Fax: 905.827.6402  
canada.inquires@bio-techne.com

### **Bio-Techne Ltd**

19 Barton Lane  
Abingdon Science Park  
Abingdon, OX14 3NB, United Kingdom  
Phone: (44) (0) 1235 529449  
Free Phone: 0800 37 34 15  
Fax: (44) (0) 1235 533420  
info.EMEA@bio-techne.com

### **General Contact Information**

www.novusbio.com  
Technical Support: nb-technical@bio-techne.com  
Orders: nb-customerservice@bio-techne.com  
General: novus@novusbio.com

### **Products Related to NBP2-43837**

---

NBP2-33376H	Blue Marker Antibody (6F4-F6) [HRP]
HAF007	Goat anti-Mouse IgG Secondary Antibody [HRP]
NB7539	Goat anti-Mouse IgG (H+L) Secondary Antibody [HRP]
NBP1-96778	Mouse IgG2a Isotype Control (M2A)

---

### **Limitations**

This product is for research use only and is not approved for use in humans or in clinical diagnosis. Primary Antibodies are guaranteed for 1 year from date of receipt.

For more information on our 100% guarantee, please visit [www.novusbio.com/guarantee](http://www.novusbio.com/guarantee)

Earn gift cards/discounts by submitting a review: [www.novusbio.com/reviews/submit/NBP2-43837](http://www.novusbio.com/reviews/submit/NBP2-43837)

Earn gift cards/discounts by submitting a publication using this product:  
[www.novusbio.com/publications](http://www.novusbio.com/publications)

