

Product Datasheet

Glutamine Synthetase Antibody (7711) - Azide and BSA Free NBP2-43826

Unit Size: 0.1 ml

Aliquot and store at -20C or -80C. Avoid freeze-thaw cycles.

www.novusbio.com



technical@novusbio.com

Protocols, Publications, Related Products, Reviews, Research Tools and Images at:
www.novusbio.com/NBP2-43826

Updated 9/25/2025 v.20.1

Earn rewards for product reviews and publications.

Submit a publication at www.novusbio.com/publications

Submit a review at www.novusbio.com/reviews/destination/NBP2-43826



NBP2-43826

Glutamine Synthetase Antibody (7711) - Azide and BSA Free

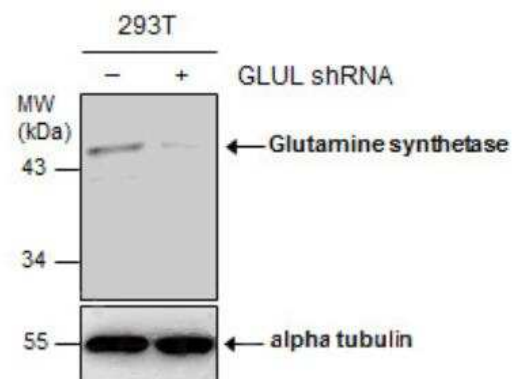
Product Information	
Unit Size	0.1 ml
Concentration	Concentrations vary lot to lot. See vial label for concentration. If unlisted please contact technical services.
Storage	Aliquot and store at -20C or -80C. Avoid freeze-thaw cycles.
Clonality	Monoclonal
Clone	7711
Preservative	No Preservative
Isotype	IgG1
Purity	Protein G purified
Buffer	PBS, 20% Glycerol
Target Molecular Weight	42 kDa

Product Description	
Description	Novus Biologicals Mouse Glutamine Synthetase Antibody (7711) - Azide and BSA Free (NBP2-43826) is a monoclonal antibody validated for use in IHC, WB and ICC/IF. All Novus Biologicals antibodies are covered by our 100% guarantee.
Host	Mouse
Gene ID	2752
Gene Symbol	GLUL
Species	Human, Mouse, Rat
Immunogen	Full length human Glutamine Synthetase Recombinant protein.

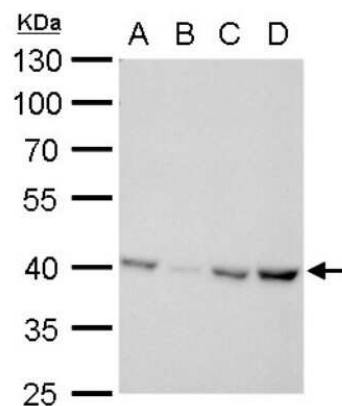
Product Application Details	
Applications	Western Blot, Immunocytochemistry/ Immunofluorescence, Immunohistochemistry, Immunohistochemistry-Frozen
Recommended Dilutions	Western Blot 1:500-1:3000, Immunohistochemistry 1:100-1:1000, Immunocytochemistry/ Immunofluorescence 1:100-1:1000, Immunohistochemistry-Frozen 1:100-1:1000

Images

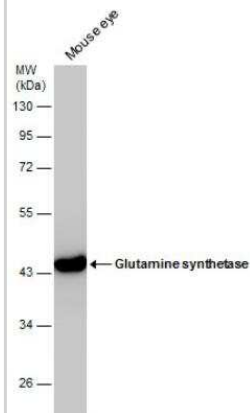
Western Blot: Glutamine Synthetase Antibody (7711) [NBP2-43826] - Non-transfected (-) and transfected (+) 293T whole cell extracts (30 ug) were separated by 10% SDS-PAGE, and the membrane was blotted with Glutamine synthetase antibody (7711) diluted at 1:500.



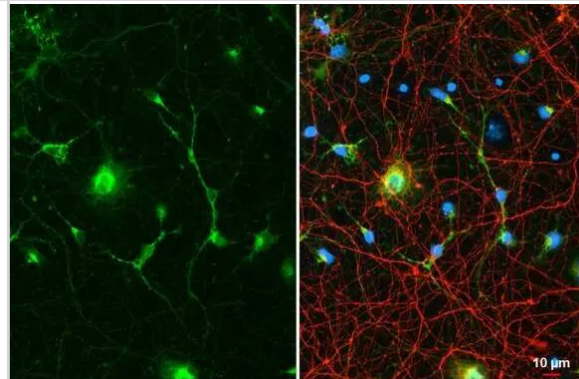
Western Blot: Glutamine Synthetase Antibody (7711) [NBP2-43826] - Analysis of A. 30 ug 293T whole cell lysate/extract B. 30 ug A431 whole cell lysate/extract C. 30 ug HeLa whole cell lysate/extract D. 30 ug HepG2 whole cell lysate/extract 10 % SDS-PAGE Glutamine synthetase antibody [7711] dilution: 1:1000



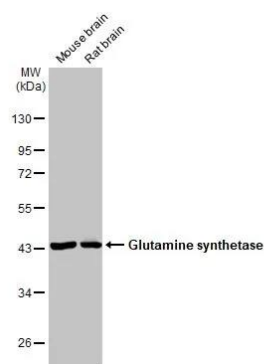
Western Blot: Glutamine Synthetase Antibody (7711) [NBP2-43826] - Mouse tissue extract (50 ug) was separated by 10% SDS-PAGE, and the membrane was blotted with Glutamine synthetase antibody diluted at 1:1000.



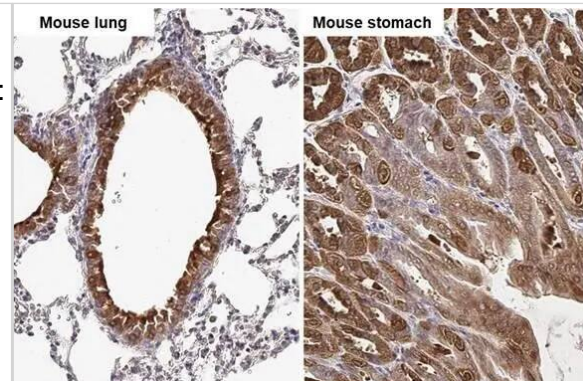
Immunocytochemistry/ Immunofluorescence: Glutamine Synthetase Antibody (7711) [NBP2-43826] - Glutamine Synthetase antibody [GT7711] detects Glutamine Synthetase protein in glial cells by immunofluorescent analysis. Sample: DIV10 rat E18 primary cortical neuron & glia cells were fixed in 4% paraformaldehyde at RT for 15 min. Green: Glutamine Synthetase stained by Glutamine Synthetase antibody [GT7711] (NBP2-43826) diluted at 1:500. Red: Tau, a Tau marker, stained by Tau antibody diluted at 1:500. Blue: Fluoroshield with DAPI .



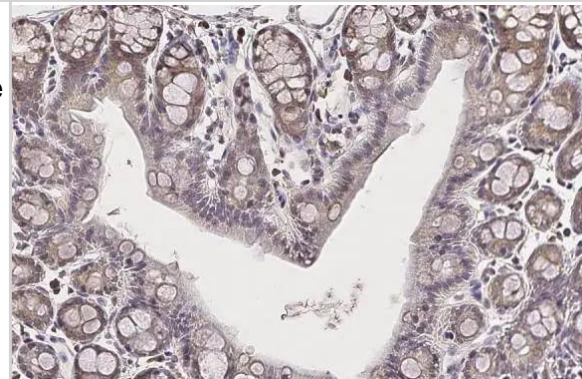
Western Blot: Glutamine Synthetase Antibody (7711) [NBP2-43826] - Various tissue extracts (50 ug) were separated by 10% SDS-PAGE, and the membrane was blotted with Glutamine Synthetase antibody [GT7711] (NBP2-43826) diluted at 1:250000. The HRP-conjugated anti-mouse IgG antibody was used to detect the primary antibody.



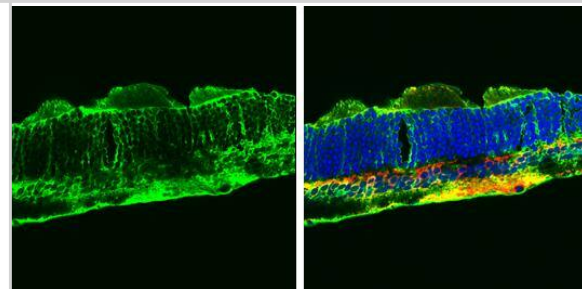
Immunohistochemistry-Paraffin: Glutamine Synthetase Antibody (7711) [NBP2-43826] - Glutamine Synthetase antibody [GT7711] detects Glutamine Synthetase protein by immunohistochemical analysis. Sample: Paraffin-embedded mouse tissues. Glutamine Synthetase stained by Glutamine Synthetase antibody [GT7711] (NBP2-43826) diluted at 1:200. Antigen Retrieval: Citrate buffer, pH 6.0, 15 min



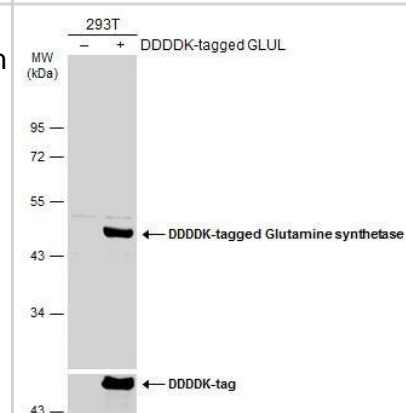
Glutamine synthetase antibody [GT7711] detects Glutamine synthetase protein at cell membrane and cytoplasm by immunohistochemical analysis. Sample: Paraffin-embedded mouse colon. Glutamine synthetase stained by Glutamine synthetase antibody [GT7711] (NBP2-43826) diluted at 1:200. Antigen Retrieval: Citrate buffer, pH 6.0, 15 min



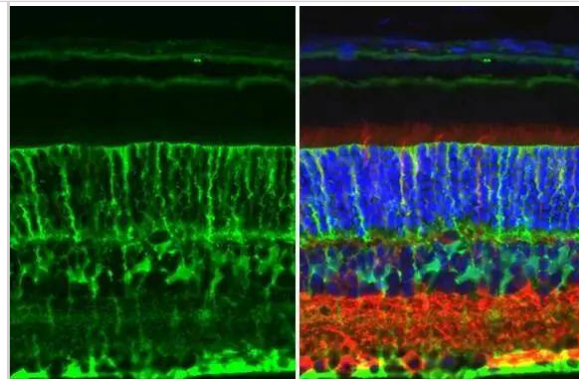
Glutamine synthetase antibody [GT7711] detects Glutamine synthetase protein by immunohistochemical analysis. Sample: Frozen sectioned adult mouse retina. Green: Glutamine synthetase protein stained by Glutamine synthetase antibody [GT7711] (NBP2-43826) diluted at 1:250. Red: PKC alpha protein stained by PKC alpha antibody [GT1876] diluted at 1:250. Blue: Fluoroshield with DAPI .



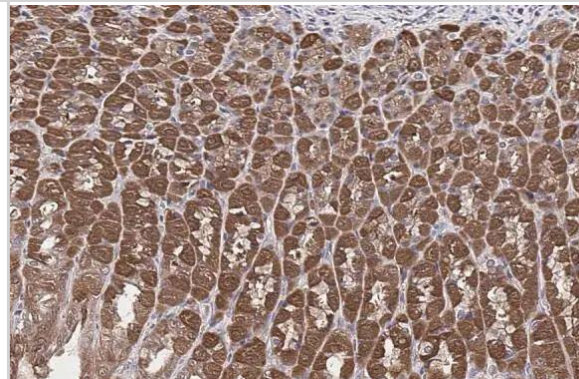
Non-transfected (-) and transfected (+) 293T whole cell extracts (30 ug) were separated by 10% SDS-PAGE, and the membrane was blotted with Glutamine synthetase antibody [GT7711] (NBP2-43826) diluted at 1:1000. The HRP-conjugated anti-mouse IgG antibody was used to detect the primary antibody.



Glutamine synthetase antibody [GT7711] detects Glutamine synthetase protein at cell membrane by immunohistochemical analysis. Sample: Paraffin-embedded mouse eye. Green: Glutamine synthetase stained by Glutamine synthetase antibody [GT7711] (NBP2-43826) diluted at 1:200. Red: beta Tubulin 3/ Tuj1 , a Cytoskeleton marker, stained by beta Tubulin 3/ Tuj1 antibody [GT11710] diluted at 1:500. Blue: Fluoroshield with DAPI .Antigen Retrieval: Citrate buffer, pH 6.0, 15 min



Glutamine synthetase antibody [GT7711] detects Glutamine synthetase protein at cell membrane and cytoplasm by immunohistochemical analysis. Sample: Paraffin-embedded rat stomach. Glutamine synthetase stained by Glutamine synthetase antibody [GT7711] (NBP2-43826) diluted at 1:200. Antigen Retrieval: Citrate buffer, pH 6.0, 15 min





Novus Biologicals USA

10730 E. Briarwood Avenue
Centennial, CO 80112
USA
Phone: 303.730.1950
Toll Free: 1.888.506.6887
Fax: 303.730.1966
nb-customerservice@bio-techne.com

Bio-Techne Canada

21 Canmotor Ave
Toronto, ON M8Z 4E6
Canada
Phone: 905.827.6400
Toll Free: 855.668.8722
Fax: 905.827.6402
canada.inquires@bio-techne.com

Bio-Techne Ltd

19 Barton Lane
Abingdon Science Park
Abingdon, OX14 3NB, United Kingdom
Phone: (44) (0) 1235 529449
Free Phone: 0800 37 34 15
Fax: (44) (0) 1235 533420
info.EMEA@bio-techne.com

General Contact Information

www.novusbio.com
Technical Support: nb-technical@bio-techne.com
Orders: nb-customerservice@bio-techne.com
General: novus@novusbio.com

Products Related to NBP2-43826

NBP2-33376H	Blue Marker Antibody (6F4-F6) [HRP]
HAF007	Goat anti-Mouse IgG Secondary Antibody [HRP]
NB7539	Goat anti-Mouse IgG (H+L) Secondary Antibody [HRP]
NBP1-97005-0.5mg	Mouse IgG1 Isotype Control (MG1)

Limitations

This product is for research use only and is not approved for use in humans or in clinical diagnosis. Primary Antibodies are guaranteed for 1 year from date of receipt.

For more information on our 100% guarantee, please visit www.novusbio.com/guarantee

Earn gift cards/discounts by submitting a review: www.novusbio.com/reviews/submit/NBP2-43826

Earn gift cards/discounts by submitting a publication using this product:
www.novusbio.com/publications

