

# Product Datasheet

## **Triosephosphate isomerase Antibody (3711) - Azide and BSA Free NBP2-43825**

Unit Size: 0.1 ml

Aliquot and store at -20C or -80C. Avoid freeze-thaw cycles.

[www.novusbio.com](http://www.novusbio.com)



[technical@novusbio.com](mailto:technical@novusbio.com)

Protocols, Publications, Related Products, Reviews, Research Tools and Images at:  
[www.novusbio.com/NBP2-43825](http://www.novusbio.com/NBP2-43825)

Updated 9/9/2025 v.20.1

Earn rewards for product  
reviews and publications.

Submit a publication at [www.novusbio.com/publications](http://www.novusbio.com/publications)

Submit a review at [www.novusbio.com/reviews/destination/NBP2-43825](http://www.novusbio.com/reviews/destination/NBP2-43825)



**NBP2-43825**

Triosephosphate isomerase Antibody (3711) - Azide and BSA Free

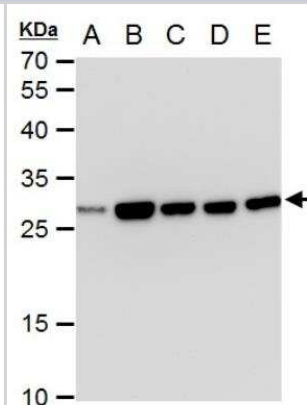
Product Information	
Unit Size	0.1 ml
Concentration	Concentrations vary lot to lot. See vial label for concentration. If unlisted please contact technical services.
Storage	Aliquot and store at -20C or -80C. Avoid freeze-thaw cycles.
Clonality	Monoclonal
Clone	3711
Preservative	No Preservative
Isotype	IgG2a
Purity	Protein G purified
Buffer	PBS
Target Molecular Weight	31 kDa

Product Description	
Description	Novus Biologicals Mouse Triosephosphate isomerase Antibody (3711) - Azide and BSA Free (NBP2-43825) is a monoclonal antibody validated for use in IHC and WB. All Novus Biologicals antibodies are covered by our 100% guarantee.
Host	Mouse
Gene ID	7167
Gene Symbol	TPI1
Species	Human, Mouse, Rat
Immunogen	Carrier-protein conjugated synthetic peptide encompassing a sequence within the C-terminus region of human Triosephosphate isomerase. The exact sequence is proprietary.

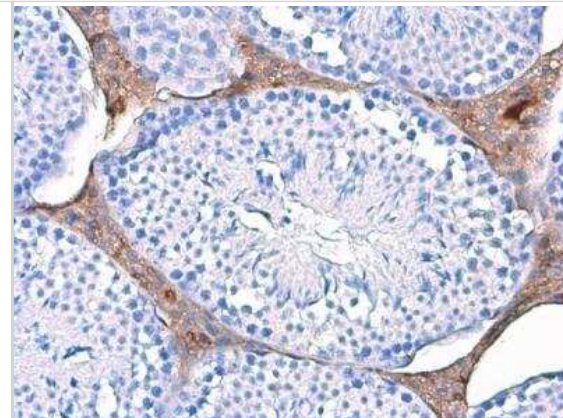
Product Application Details	
Applications	Western Blot, Immunohistochemistry-Paraffin, Immunohistochemistry
Recommended Dilutions	Western Blot 1:500-1:3000, Immunohistochemistry 1:100-1:1000, Immunohistochemistry-Paraffin 1:100-1:1000

**Images**

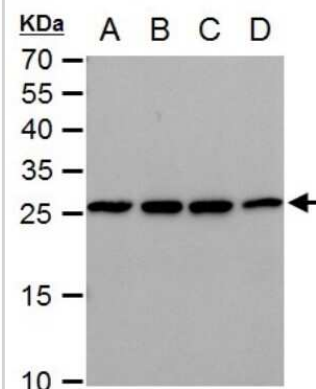
Western Blot: Triosephosphate isomerase Antibody (3711) [NBP2-43825] - Triosephosphate isomerase antibody (3711) detects Triosephosphate isomerase protein by western blot analysis. A. 30 ug Neuro2A whole cell extract. B. 30 ug C8D30 whole cell extract. C. 30 ug NIH-3T3 whole cell extract. D. 30 ug Raw264.7 whole cell extract. E. 30 ug C2C12 whole cell extract. 12 % SDS-PAGE. Triosephosphate isomerase antibody (3711) dilution: 1:1000



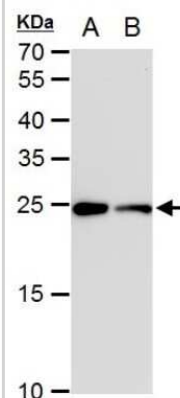
**Immunohistochemistry-Paraffin: Triosephosphate isomerase Antibody (3711) [NBP2-43825]** - Triosephosphate isomerase antibody (3711) detects Triosephosphate isomerase protein at cytoplasm by immunohistochemical analysis. Sample: Paraffin-embedded mouse testis. Triosephosphate isomerase stained by Triosephosphate isomerase antibody (3711) diluted at 1:100.



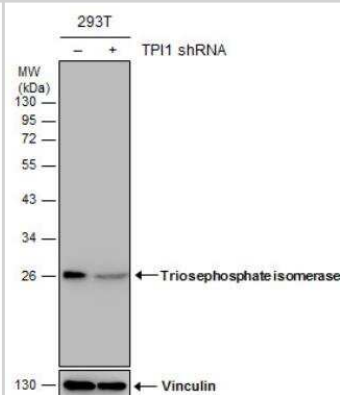
**Western Blot: Triosephosphate isomerase Antibody (3711) [NBP2-43825]** - Analysis of A. 30 ug 293T whole cell extract B. 30 ug A431 whole cell extract C. 30 ug HeLa whole cell extract D. 30 ug HepG2 whole cell extract 12 % SDS-PAGE Triosephosphate isomerase antibody [3711] dilution: 1:1000



**Western Blot: Triosephosphate isomerase Antibody (3711) [NBP2-43825]** - Analysis of A. 30 ug PC-12 whole cell extract B. 30 ug Rat2 whole cell extract 12 % SDS-PAGE Triosephosphate isomerase antibody [3711] dilution: 1:1000



**Western Blot: Triosephosphate isomerase Antibody (3711) [NBP2-43825]** - Non-transfected (-) and transfected (+) 293T whole cell extracts (30 ug) were separated by 12% SDS-PAGE, and the membrane was blotted with Triosephosphate isomerase antibody.





### **Novus Biologicals USA**

10730 E. Briarwood Avenue  
Centennial, CO 80112  
USA  
Phone: 303.730.1950  
Toll Free: 1.888.506.6887  
Fax: 303.730.1966  
nb-customerservice@bio-techne.com

### **Bio-Techne Canada**

21 Canmotor Ave  
Toronto, ON M8Z 4E6  
Canada  
Phone: 905.827.6400  
Toll Free: 855.668.8722  
Fax: 905.827.6402  
canada.inquires@bio-techne.com

### **Bio-Techne Ltd**

19 Barton Lane  
Abingdon Science Park  
Abingdon, OX14 3NB, United Kingdom  
Phone: (44) (0) 1235 529449  
Free Phone: 0800 37 34 15  
Fax: (44) (0) 1235 533420  
info.EMEA@bio-techne.com

### **General Contact Information**

[www.novusbio.com](http://www.novusbio.com)  
Technical Support: nb-technical@bio-techne.com  
Orders: nb-customerservice@bio-techne.com  
General: novus@novusbio.com

### **Products Related to NBP2-43825**

---

HAF007	Goat anti-Mouse IgG Secondary Antibody [HRP]
NB720-B	Rabbit anti-Mouse IgG (H+L) Secondary Antibody [Biotin]
NBP1-96778	Mouse IgG2a Isotype Control (M2A)
NBP2-53086-20ug	Recombinant Human Triosephosphate isomerase His Protein

---

### **Limitations**

This product is for research use only and is not approved for use in humans or in clinical diagnosis. Primary Antibodies are guaranteed for 1 year from date of receipt.

For more information on our 100% guarantee, please visit [www.novusbio.com/guarantee](http://www.novusbio.com/guarantee)

Earn gift cards/discounts by submitting a review: [www.novusbio.com/reviews/submit/NBP2-43825](http://www.novusbio.com/reviews/submit/NBP2-43825)

Earn gift cards/discounts by submitting a publication using this product:  
[www.novusbio.com/publications](http://www.novusbio.com/publications)

