

Product Datasheet

TTC11 Antibody (4211) - Azide and BSA Free NBP2-43771

Unit Size: 0.1 ml

Aliquot and store at -20C or -80C. Avoid freeze-thaw cycles.

www.novusbio.com



technical@novusbio.com

Protocols, Publications, Related Products, Reviews, Research Tools and Images at:
www.novusbio.com/NBP2-43771

Updated 2/23/2025 v.20.1

Earn rewards for product
reviews and publications.

Submit a publication at www.novusbio.com/publications

Submit a review at www.novusbio.com/reviews/destination/NBP2-43771



NBP2-43771

TTC11 Antibody (4211) - Azide and BSA Free

Product Information

Unit Size	0.1 ml
Concentration	Concentrations vary lot to lot. See vial label for concentration. If unlisted please contact technical services.
Storage	Aliquot and store at -20C or -80C. Avoid freeze-thaw cycles.
Clonality	Monoclonal
Clone	4211
Preservative	No Preservative
Isotype	IgG2b
Purity	Protein A purified
Buffer	PBS
Target Molecular Weight	17 kDa

Product Description

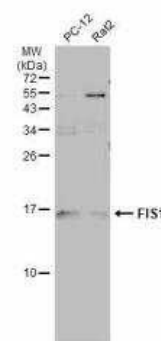
Host	Mouse
Gene ID	51024
Gene Symbol	FIS1
Species	Human, Rat
Reactivity Notes	Rat (87%).
Immunogen	Full length human TTC11 Recombinant protein.

Product Application Details

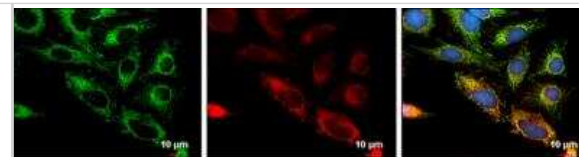
Applications	Western Blot, Immunocytochemistry/ Immunofluorescence
Recommended Dilutions	Western Blot 1:500-1:3000, Immunocytochemistry/ Immunofluorescence 1:100-1:1000

Images

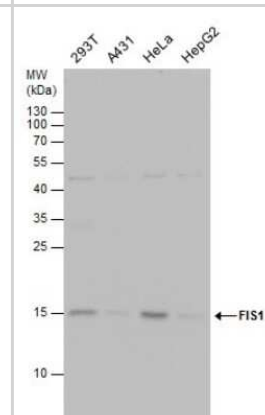
Western Blot: TTC11 Antibody (4211) [NBP2-43771] - arious whole cell extracts (30 ug) were separated by 15% SDS-PAGE, and the membrane was blotted with TTC11 Antibody (4211) diluted at 1:500. HRP-conjugated anti-mouse IgG antibody was used to detect the primary antibody.



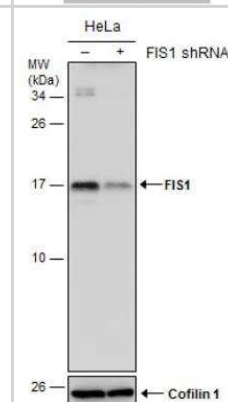
Immunocytochemistry/Immunofluorescence: TTC11 Antibody (4211) [NBP2-43771] - Analysis of Sample: HeLa cells were fixed in 2% paraformaldehyde/culture medium at 37°C for 30 min. Green: FIS1 protein stained by FIS1 antibody diluted at 1:1000. Red: MitoTracker Red CMXRos, a mitochondria tracker. Blue: Hoechst 33342 staining.



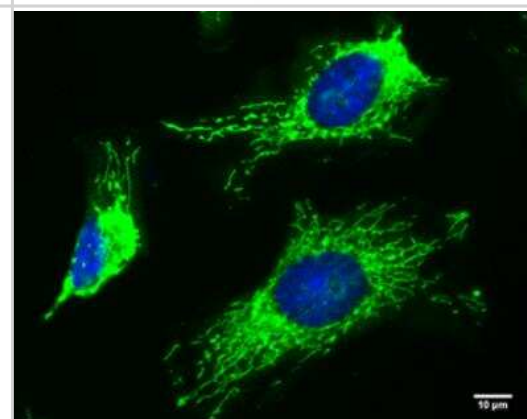
Western Blot: TTC11 Antibody (4211) [NBP2-43771] - Analysis of various whole cell extracts (30 ug) were separated by 15% SDS-PAGE, and the membrane was blotted with FIS1 antibody diluted by 1:1000.



Western Blot: TTC11 Antibody (4211) [NBP2-43771] - Non-transfected (-) and transfected (+) HeLa whole cell extracts (30 ug) were separated by 15% SDS-PAGE, and the membrane was blotted with FIS1 antibody [4211].



Immunocytochemistry/Immunofluorescence: TTC11 Antibody (4211) [NBP2-43771] - Analysis of Sample: HeLa cells were fixed in 4% paraformaldehyde at room temperature. Green: FIS1 protein stained by FIS1 antibody [4211] diluted at 1:100. Blue: Hoechst 33342 staining.





Novus Biologicals USA

10730 E. Briarwood Avenue
Centennial, CO 80112
USA
Phone: 303.730.1950
Toll Free: 1.888.506.6887
Fax: 303.730.1966
nb-customerservice@bio-techne.com

Bio-Techne Canada

21 Canmotor Ave
Toronto, ON M8Z 4E6
Canada
Phone: 905.827.6400
Toll Free: 855.668.8722
Fax: 905.827.6402
canada.inquires@bio-techne.com

Bio-Techne Ltd

19 Barton Lane
Abingdon Science Park
Abingdon, OX14 3NB, United Kingdom
Phone: (44) (0) 1235 529449
Free Phone: 0800 37 34 15
Fax: (44) (0) 1235 533420
info.EMEA@bio-techne.com

General Contact Information

www.novusbio.com
Technical Support: nb-technical@bio-techne.com
Orders: nb-customerservice@bio-techne.com
General: novus@novusbio.com

Products Related to NBP2-43771

HAF007	Goat anti-Mouse IgG Secondary Antibody [HRP]
NB720-B	Rabbit anti-Mouse IgG (H+L) Secondary Antibody [Biotin]
NBP2-27231	Mouse IgG2b Isotype Control (MPC-11)
NBP1-44386	Recombinant Human TTC11 His Protein

Limitations

This product is for research use only and is not approved for use in humans or in clinical diagnosis. Primary Antibodies are guaranteed for 1 year from date of receipt.

For more information on our 100% guarantee, please visit www.novusbio.com/guarantee

Earn gift cards/discounts by submitting a review: www.novusbio.com/reviews/submit/NBP2-43771

Earn gift cards/discounts by submitting a publication using this product:
www.novusbio.com/publications

