

# Product Datasheet

## Craniofacial Development Protein 1 Antibody (9612) - Azide and BSA Free NBP2-43759

Unit Size: 0.1 ml

Aliquot and store at -20C or -80C. Avoid freeze-thaw cycles.

[www.novusbio.com](http://www.novusbio.com)



[technical@novusbio.com](mailto:technical@novusbio.com)

Protocols, Publications, Related Products, Reviews, Research Tools and Images at:  
[www.novusbio.com/NBP2-43759](http://www.novusbio.com/NBP2-43759)

Updated 2/23/2025 v.20.1

Earn rewards for product  
reviews and publications.

Submit a publication at [www.novusbio.com/publications](http://www.novusbio.com/publications)

Submit a review at [www.novusbio.com/reviews/destination/NBP2-43759](http://www.novusbio.com/reviews/destination/NBP2-43759)



**NBP2-43759**

Craniofacial Development Protein 1 Antibody (9612) - Azide and BSA Free

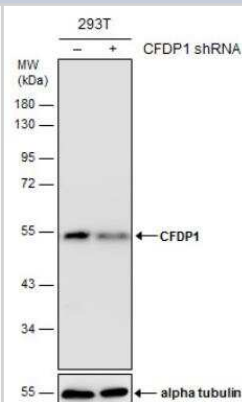
Product Information	
Unit Size	0.1 ml
Concentration	Concentrations vary lot to lot. See vial label for concentration. If unlisted please contact technical services.
Storage	Aliquot and store at -20C or -80C. Avoid freeze-thaw cycles.
Clonality	Monoclonal
Clone	9612
Preservative	No Preservative
Isotype	IgG2b
Purity	Protein G purified
Buffer	PBS

Product Description	
Host	Mouse
Gene ID	10428
Gene Symbol	CFDP1
Species	Human
Immunogen	Recombinant protein encompassing a sequence within the center region of human Craniofacial Development Protein 1. The exact sequence is proprietary.

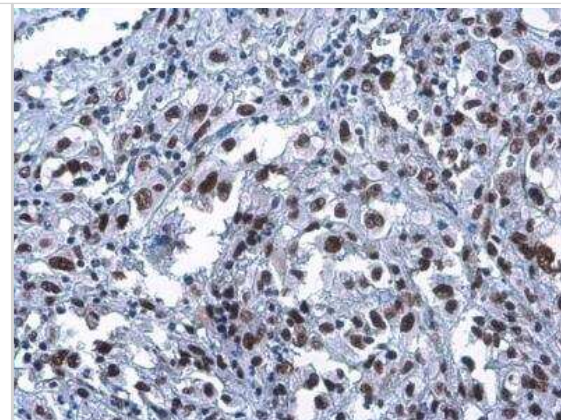
Product Application Details	
Applications	Western Blot, Immunohistochemistry-Paraffin
Recommended Dilutions	Western Blot 1:500-1:3000, Immunohistochemistry-Paraffin 1:100-1:1000

**Images**

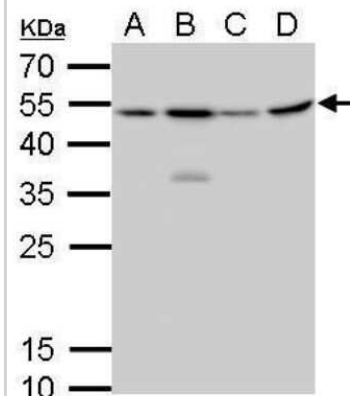
Western Blot: Craniofacial Development Protein 1 Antibody (9612) [NBP2-43759] - Non-transfected (-) and transfected (+) 293T whole cell extracts (30 ug) were separated by 10% SDS-PAGE, and the membrane was blotted with CFDP1 antibody [GT9612].



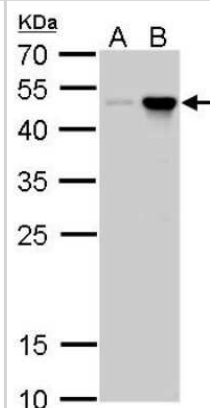
Immunohistochemistry-Paraffin: Craniofacial Development Protein 1 Antibody (9612) [NBP2-43759] - Craniofacial Development Protein 1 Antibody (9612) detects CFDP1 protein at nucleus by immunohistochemical analysis. Sample: Paraffin-embedded human ovarian cancer. Craniofacial Development Protein 1 stained by Craniofacial Development Protein 1 Antibody (9612) diluted at 1:100.



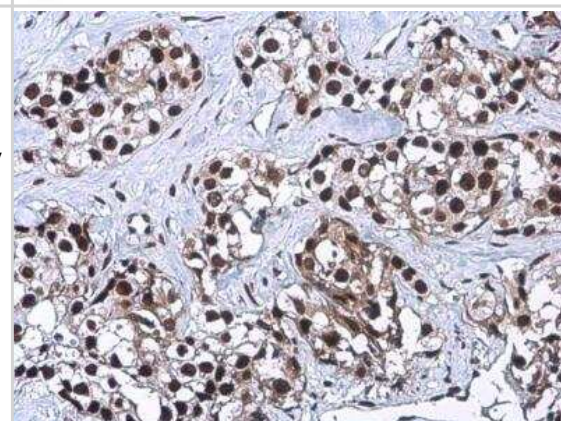
Western Blot: Craniofacial Development Protein 1 Antibody (9612) [NBP2-43759] - Analysis of A. 30 ug U87-MG whole cell lysate/extract B. 30 ug SK-N-SH whole cell lysate/extract C. 30 ug IMR32 whole cell lysate/extract D. 30 ug SK-N-AS whole cell lysate/extract 12 % SDS-PAGE CFDP1 antibody [9612] dilution: 1:1000



Western Blot: Craniofacial Development Protein 1 Antibody (9612) [NBP2-43759] - Analysis of A. 5 ug 293T whole cell lysate/extract B. 5 ug whole cell lysate/extract of human CFDP1-transfected 293T cells 12 % SDS-PAGE CFDP1 antibody [9612] dilution: 1:5000.



Immunohistochemistry-Paraffin: Craniofacial Development Protein 1 Antibody (9612) [NBP2-43759] - Craniofacial Development Protein 1 Antibody (9612) detects Craniofacial Development Protein 1 protein at nucleus by immunohistochemical analysis. Sample: Paraffin-embedded human breast carcinoma. Craniofacial Development Protein 1 stained by Craniofacial Development Protein 1 Antibody (9612) diluted at 1:100.





### **Novus Biologicals USA**

10730 E. Briarwood Avenue  
Centennial, CO 80112  
USA  
Phone: 303.730.1950  
Toll Free: 1.888.506.6887  
Fax: 303.730.1966  
nb-customerservice@bio-techne.com

### **Bio-Techne Canada**

21 Canmotor Ave  
Toronto, ON M8Z 4E6  
Canada  
Phone: 905.827.6400  
Toll Free: 855.668.8722  
Fax: 905.827.6402  
canada.inquires@bio-techne.com

### **Bio-Techne Ltd**

19 Barton Lane  
Abingdon Science Park  
Abingdon, OX14 3NB, United Kingdom  
Phone: (44) (0) 1235 529449  
Free Phone: 0800 37 34 15  
Fax: (44) (0) 1235 533420  
info.EMEA@bio-techne.com

### **General Contact Information**

www.novusbio.com  
Technical Support: nb-technical@bio-techne.com  
Orders: nb-customerservice@bio-techne.com  
General: novus@novusbio.com

### **Products Related to NBP2-43759**

---

HAF007	Goat anti-Mouse IgG Secondary Antibody [HRP]
NB720-B	Rabbit anti-Mouse IgG (H+L) Secondary Antibody [Biotin]
NBP2-27231	Mouse IgG2b Isotype Control (MPC-11)
H00010428-P01-10ug	Recombinant Human Craniofacial Development Protein 1 GST (N-Term) Protein

---

### **Limitations**

This product is for research use only and is not approved for use in humans or in clinical diagnosis. Primary Antibodies are guaranteed for 1 year from date of receipt.

For more information on our 100% guarantee, please visit [www.novusbio.com/guarantee](http://www.novusbio.com/guarantee)

Earn gift cards/discounts by submitting a review: [www.novusbio.com/reviews/submit/NBP2-43759](http://www.novusbio.com/reviews/submit/NBP2-43759)

Earn gift cards/discounts by submitting a publication using this product:  
[www.novusbio.com/publications](http://www.novusbio.com/publications)

