

# Product Datasheet

## mCherry Antibody NBP2-43720

Unit Size: 0.1 ml

Aliquot and store at -20C or -80C. Avoid freeze-thaw cycles.

[www.novusbio.com](http://www.novusbio.com)



[technical@novusbio.com](mailto:technical@novusbio.com)

### Publications: 3

Protocols, Publications, Related Products, Reviews, Research Tools and Images at:  
[www.novusbio.com/NBP2-43720](http://www.novusbio.com/NBP2-43720)

Updated 10/23/2024 v.20.1

Earn rewards for product  
reviews and publications.

Submit a publication at [www.novusbio.com/publications](http://www.novusbio.com/publications)

Submit a review at [www.novusbio.com/reviews/destination/NBP2-43720](http://www.novusbio.com/reviews/destination/NBP2-43720)



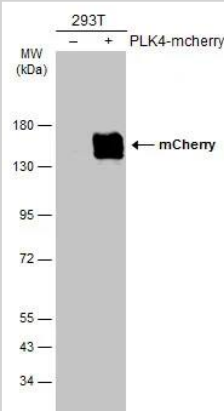
**NBP2-43720**

## mCherry Antibody

Product Information	
Unit Size	0.1 ml
Concentration	Concentrations vary lot to lot. See vial label for concentration. If unlisted please contact technical services.
Storage	Aliquot and store at -20C or -80C. Avoid freeze-thaw cycles.
Clonality	Polyclonal
Preservative	0.025% Proclin 300
Isotype	IgG
Purity	Antigen Affinity-purified
Buffer	PBS (pH 7), 20% Glycerol, 1% BSA
Target Molecular Weight	27 kDa
Product Description	
Host	Rabbit
Species	Non-species specific
Immunogen	Full length mCherry recombinant protein
Product Application Details	
Applications	Western Blot, Immunocytochemistry/ Immunofluorescence, Immunohistochemistry, Immunohistochemistry-Frozen, Immunoprecipitation, Proximity Ligation Assay, Immunohistochemistry Whole-Mount
Recommended Dilutions	Western Blot 1:1000-1:10000, Immunohistochemistry 1:100-1:500, Immunocytochemistry/ Immunofluorescence 1:100-1:1000, Immunoprecipitation 1:100-1:500, Immunohistochemistry-Frozen, Proximity Ligation Assay, Immunohistochemistry Whole-Mount 1:100-1:500
Application Notes	PLA, IHC-FR-Assay dependent

**Images**

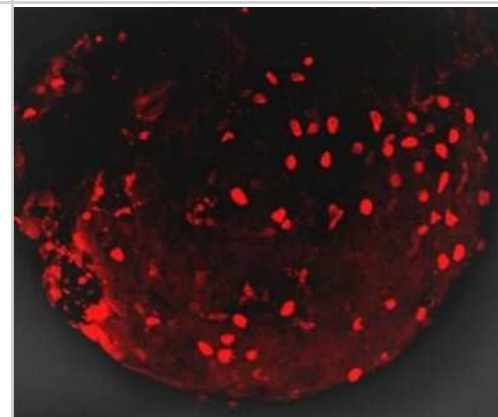
Western Blot: mCherry Antibody [NBP2-43720] - Non-transfected (-) and transfected (+) 293T whole cell extracts (30 ug) were separated by 7.5% SDS-PAGE, and the membrane was blotted with mCherry antibody (NBP2-43720) diluted at 1:5000. The HRP-conjugated anti-rabbit IgG antibody was used to detect the primary antibody.



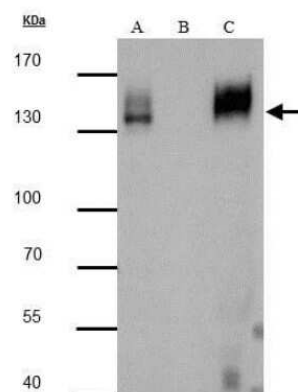
**Immunocytochemistry/Immunofluorescence: mCherry Antibody [NBP2-43720]** - Analysis of Sample: mCherry fusion protein-transfected HeLa cells were fixed in Triton X-100 for 1 min, then 4% paraformaldehyde at RT for 30 min. Green: mCherry protein stained by mCherry antibody diluted at 1:500. Red: mCherry is expressed in the transfected cell. Blue: Hoechst 33342 staining.



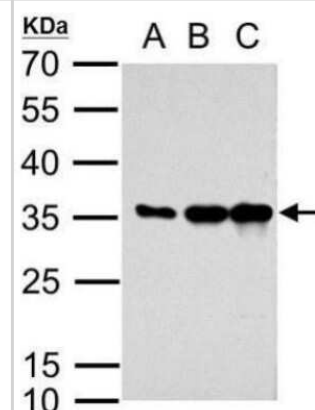
**Immunohistochemistry Whole-Mount: mCherry Antibody [NBP2-43720]** - Analysis of 2 days-post-fertilization zebrafish embryo. mCherry antibody labels mCherry-expressing cells dilution: 1:100.



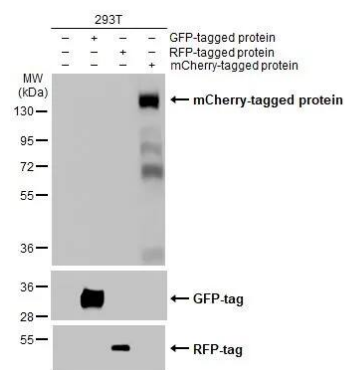
**Immunoprecipitation: mCherry Antibody [NBP2-43720]** - Analysis of 293T whole cell lysate/extract  
 A : 20 µg whole cell lysate/extract of mcherry protein expressing 293T cells  
 B : Control with 2.5 µg of pre-immune rabbit IgG  
 C : Immunoprecipitation of mcherry protein by 2.5 µg of mcherry antibody  
 7.5% SDS-PAGE The immunoprecipitated mcherry protein was detected by mcherry antibody diluted at 1 : 3000. EasyBlot anti-rabbit IgG (HRP) was used as a secondary reagent.



**Western Blot: mCherry Antibody [NBP2-43720]** - Analysis of A. 5ng recombinant mCherry B. 10ng recombinant mCherry C. 20ng recombinant mCherry  
 12 % SDS-PAGE mCherry antibody dilution: 1:2000.



Western Blot: mCherry Antibody [NBP2-43720] - Non-transfected (-) and transfected (+) 293T whole cell extracts (30 ug) were separated by gradient gel% SDS-PAGE, and the membrane was blotted with mCherry antibody (NBP2-43720) diluted at 1:10000. The HRP-conjugated anti-rabbit IgG antibody was used to detect the primary antibody.



## Publications

Kruse R, Krantz J, Barker N et al. The CLASP2 Protein Interaction Network in Adipocytes Links CLIP2 to AGAP3, CLASP2 to G2L1, MARK2, and SOGA1, and Identifies SOGA1 as a Microtubule-Associated Protein. *Mol. Cell Proteomics*. 2017-05-26 [PMID: 28550165]

Sonali Chaturvedi, Gustavo Vasen, Michael Pablo, Xinyue Chen, Nathan Beutler, Arjun Kumar, Elizabeth Tanner, Sylvia Illouz, Donna Rahgoshay, John Burnett, Leo Holguin, Pei-Yi Chen, Blaise Ndjamen, Melanie Ott, Robert Rodick, Thomas Rogers, Davey M. Smith, Leor S. Weinberger Identification of a therapeutic interfering particle—A single-dose SARS-CoV-2 antiviral intervention with a high barrier to resistance *Cell* 2021-11-10 [PMID: 34838159]

Parker, SS;Krantz, J;Kwak, EA;Barker, NK;Deer, CG;Lee, NY;Mouneimne, G;Langlais, PR; Insulin Induces Microtubule Stabilization and Regulates the Microtubule Plus-End Tracking Protein Network in Adipocytes *Mol. Cell Proteomics* 2019-04-24 [PMID: 31018989] (WB, Mouse)



### **Novus Biologicals USA**

10730 E. Briarwood Avenue  
Centennial, CO 80112  
USA  
Phone: 303.730.1950  
Toll Free: 1.888.506.6887  
Fax: 303.730.1966  
nb-customerservice@bio-techne.com

### **Bio-Techne Canada**

21 Canmotor Ave  
Toronto, ON M8Z 4E6  
Canada  
Phone: 905.827.6400  
Toll Free: 855.668.8722  
Fax: 905.827.6402  
canada.inquires@bio-techne.com

### **Bio-Techne Ltd**

19 Barton Lane  
Abingdon Science Park  
Abingdon, OX14 3NB, United Kingdom  
Phone: (44) (0) 1235 529449  
Free Phone: 0800 37 34 15  
Fax: (44) (0) 1235 533420  
info.EMEA@bio-techne.com

### **General Contact Information**

www.novusbio.com  
Technical Support: nb-technical@bio-techne.com  
Orders: nb-customerservice@bio-techne.com  
General: novus@novusbio.com

### **Products Related to NBP2-43720**

---

HAF008	Goat anti-Rabbit IgG Secondary Antibody [HRP]
NB7160	Goat anti-Rabbit IgG (H+L) Secondary Antibody [HRP]
NBP2-24891	Rabbit IgG Isotype Control

---

### **Limitations**

This product is for research use only and is not approved for use in humans or in clinical diagnosis. Primary Antibodies are guaranteed for 1 year from date of receipt.

For more information on our 100% guarantee, please visit [www.novusbio.com/guarantee](http://www.novusbio.com/guarantee)

Earn gift cards/discounts by submitting a review: [www.novusbio.com/reviews/submit/NBP2-43720](http://www.novusbio.com/reviews/submit/NBP2-43720)

Earn gift cards/discounts by submitting a publication using this product:  
[www.novusbio.com/publications](http://www.novusbio.com/publications)

