

# Product Datasheet

## CS Citrate Synthase Antibody (2061) - Azide and BSA Free NBP2-43649

Unit Size: 0.1 ml

Aliquot and store at -20C or -80C. Avoid freeze-thaw cycles.

[www.novusbio.com](http://www.novusbio.com)



[technical@novusbio.com](mailto:technical@novusbio.com)

Protocols, Publications, Related Products, Reviews, Research Tools and Images at:  
[www.novusbio.com/NBP2-43649](http://www.novusbio.com/NBP2-43649)

Updated 9/9/2025 v.20.1

Earn rewards for product  
reviews and publications.

Submit a publication at [www.novusbio.com/publications](http://www.novusbio.com/publications)

Submit a review at [www.novusbio.com/reviews/destination/NBP2-43649](http://www.novusbio.com/reviews/destination/NBP2-43649)



**NBP2-43649****CS Citrate Synthase Antibody (2061) - Azide and BSA Free**

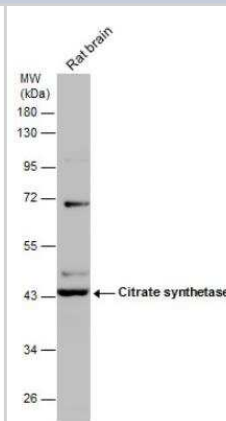
Product Information	
Unit Size	0.1 ml
Concentration	Concentrations vary lot to lot. See vial label for concentration. If unlisted please contact technical services.
Storage	Aliquot and store at -20C or -80C. Avoid freeze-thaw cycles.
Clonality	Monoclonal
Clone	2061
Preservative	No Preservative
Isotype	IgG2b
Purity	Protein G purified
Buffer	PBS
Target Molecular Weight	52 kDa

Product Description	
Description	Novus Biologicals Mouse CS Citrate Synthase Antibody (2061) - Azide and BSA Free (NBP2-43649) is a monoclonal antibody validated for use in IHC, WB and ICC/IF. All Novus Biologicals antibodies are covered by our 100% guarantee.
Host	Mouse
Gene ID	1431
Gene Symbol	CS
Species	Human, Mouse, Rat, Zebrafish
Immunogen	Recombinant protein encompassing a sequence within the center region of human Citrate synthetase. The exact sequence is proprietary.

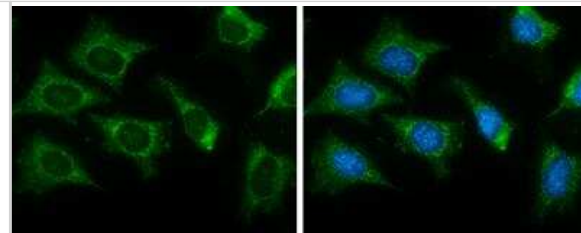
Product Application Details	
Applications	Western Blot, Immunohistochemistry-Paraffin, Immunocytochemistry/Immunofluorescence, Immunohistochemistry
Recommended Dilutions	Western Blot 1:500-1:3000, Immunohistochemistry 10 - 1:500, Immunocytochemistry/ Immunofluorescence 1:100-1:1000, Immunohistochemistry-Paraffin 1:100-1:1000

**Images**

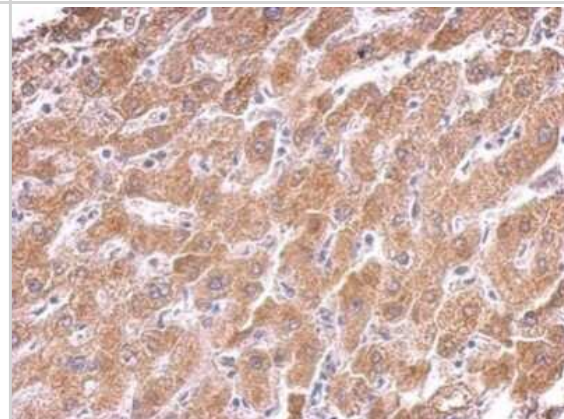
Western Blot: CS Citrate Synthase Antibody (2061) [NBP2-43649] - Rat tissue extract (50 ug) was separated by 10% SDS-PAGE, and the membrane was blotted with CS Citrate Synthetase Antibody (2061) diluted at 1:1000.



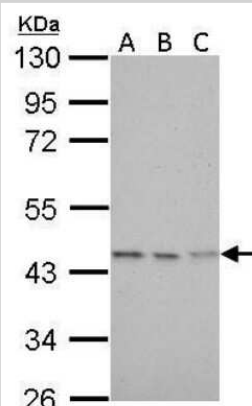
**Immunocytochemistry/Immunofluorescence:** CS Citrate Synthase Antibody (2061) [NBP2-43649] - CS Citrate Synthetase Antibody (2061) detects CS Citrate Synthetase protein at mitochondria by immunofluorescent analysis. Sample: HeLa cells were fixed in ice-cold MeOH for 5 min. Green: Citrate synthetase protein stained by CS Citrate Synthetase Antibody (2061) diluted at 1:500. Blue: Hoechst 33342 staining.



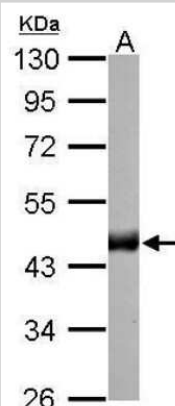
**Immunohistochemistry-Paraffin:** CS Citrate Synthase Antibody (2061) [NBP2-43649] - Analysis of hepatoma. Citrate synthetase antibody [2061] dilution: 1:200.



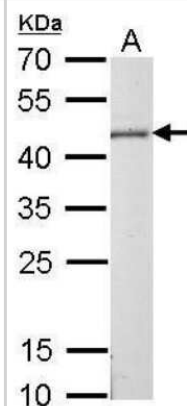
**Western Blot:** CS Citrate Synthase Antibody (2061) [NBP2-43649] - Analysis of A. 30 ug 293T whole cell lysate/extract B. 30 ug A431 whole cell lysate/extract C. 30 ug HepG2 whole cell lysate/extract 10 % SDS-PAGE Citrate synthetase antibody dilution: 1:1000



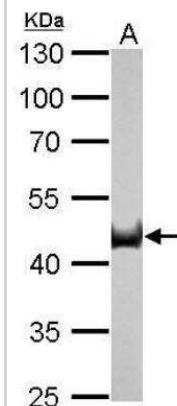
**Western Blot:** CS Citrate Synthase Antibody (2061) [NBP2-43649] - Analysis of A. 30 ug zebrafish brain lysate/extract 10 % SDS-PAGE Citrate synthetase antibody [2061] dilution: 1:1000



Western Blot: CS Citrate Synthase Antibody (2061) [NBP2-43649] - Analysis of A. 50 ug mouse brain lysate/extract 12 % SDS-PAGE Citrate synthetase antibody [2061] dilution: 1:1000



Western Blot: CS Citrate Synthase Antibody (2061) [NBP2-43649] - CS Citrate Synthetase Antibody (2061) detects CS protein by Western blot analysis. A. 30 ug zebrafish heart lysate/extract. 10 % SDS-PAGE. CS Citrate Synthetase Antibody (2061) dilution: 1:1000.





### **Novus Biologicals USA**

10730 E. Briarwood Avenue  
Centennial, CO 80112  
USA  
Phone: 303.730.1950  
Toll Free: 1.888.506.6887  
Fax: 303.730.1966  
nb-customerservice@bio-techne.com

### **Bio-Techne Canada**

21 Canmotor Ave  
Toronto, ON M8Z 4E6  
Canada  
Phone: 905.827.6400  
Toll Free: 855.668.8722  
Fax: 905.827.6402  
canada.inquires@bio-techne.com

### **Bio-Techne Ltd**

19 Barton Lane  
Abingdon Science Park  
Abingdon, OX14 3NB, United Kingdom  
Phone: (44) (0) 1235 529449  
Free Phone: 0800 37 34 15  
Fax: (44) (0) 1235 533420  
info.EMEA@bio-techne.com

### **General Contact Information**

[www.novusbio.com](http://www.novusbio.com)  
Technical Support: nb-technical@bio-techne.com  
Orders: nb-customerservice@bio-techne.com  
General: novus@novusbio.com

### **Products Related to NBP2-43649**

---

HAF007	Goat anti-Mouse IgG Secondary Antibody [HRP]
NB720-B	Rabbit anti-Mouse IgG (H+L) Secondary Antibody [Biotin]
NBP2-27231	Mouse IgG2b Isotype Control (MPC-11)
NBP2-51818-0.1mg	Recombinant Human CS Citrate Synthase His Protein

---

### **Limitations**

This product is for research use only and is not approved for use in humans or in clinical diagnosis. Primary Antibodies are guaranteed for 1 year from date of receipt.

For more information on our 100% guarantee, please visit [www.novusbio.com/guarantee](http://www.novusbio.com/guarantee)

Earn gift cards/discounts by submitting a review: [www.novusbio.com/reviews/submit/NBP2-43649](http://www.novusbio.com/reviews/submit/NBP2-43649)

Earn gift cards/discounts by submitting a publication using this product:  
[www.novusbio.com/publications](http://www.novusbio.com/publications)

