

# Product Datasheet

## ETHE1 Antibody (1621) - Azide and BSA Free NBP2-43632

Unit Size: 0.1 ml

Aliquot and store at -20C or -80C. Avoid freeze-thaw cycles.

[www.novusbio.com](http://www.novusbio.com)



[technical@novusbio.com](mailto:technical@novusbio.com)

Protocols, Publications, Related Products, Reviews, Research Tools and Images at:  
[www.novusbio.com/NBP2-43632](http://www.novusbio.com/NBP2-43632)

Updated 9/9/2025 v.20.1

Earn rewards for product  
reviews and publications.

Submit a publication at [www.novusbio.com/publications](http://www.novusbio.com/publications)

Submit a review at [www.novusbio.com/reviews/destination/NBP2-43632](http://www.novusbio.com/reviews/destination/NBP2-43632)



**NBP2-43632**

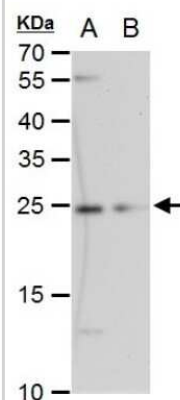
ETHE1 Antibody (1621) - Azide and BSA Free

Product Information	
Unit Size	0.1 ml
Concentration	Concentrations vary lot to lot. See vial label for concentration. If unlisted please contact technical services.
Storage	Aliquot and store at -20C or -80C. Avoid freeze-thaw cycles.
Clonality	Monoclonal
Clone	1621
Preservative	No Preservative
Isotype	IgG2b
Purity	Protein G purified
Buffer	PBS
Product Description	
Description	Novus Biologicals Mouse ETHE1 Antibody (1621) - Azide and BSA Free (NBP2-43632) is a monoclonal antibody validated for use in WB and ICC/IF. All Novus Biologicals antibodies are covered by our 100% guarantee.
Host	Mouse
Gene ID	23474
Gene Symbol	ETHE1
Species	Human, Mouse, Rat
Immunogen	Full length human ETHE1 Recombinant protein.
Product Application Details	
Applications	Western Blot, Immunocytochemistry/ Immunofluorescence
Recommended Dilutions	Western Blot 1:500-1:3000, Immunocytochemistry/ Immunofluorescence 1:100-1:1000

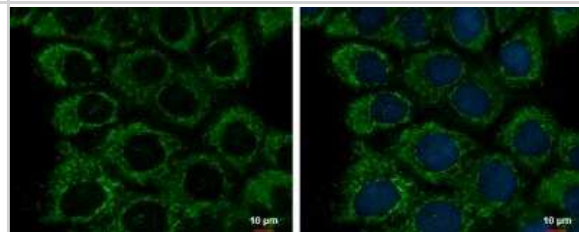


## Images

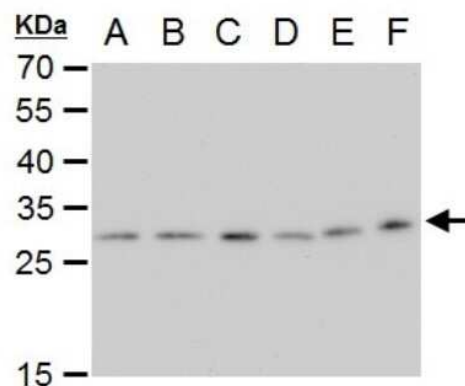
Western Blot: ETHE1 Antibody (1621) [NBP2-43632] - Analysis of A. 30 ug PC-12 whole cell extract B. 30 ug Rat2 whole cell extract 12 % SDS-PAGE ETHE1 antibody [1621] dilution: 1:1000



Immunocytochemistry/Immunofluorescence: ETHE1 Antibody (1621) [NBP2-43632] - Analysis of Sample: A431 cells were fixed in 2% paraformaldehyde/culture medium at 37C for 30 min. Green: ETHE1 protein stained by ETHE1 antibody [1621] diluted at 1:500. Blue: Hoechst 33342 staining.



Western Blot: ETHE1 Antibody (1621) [NBP2-43632] - Analysis of A. 30 ug Neuro2A whole cell extract B. 30 ug GL261 whole cell extract C. 30 ug C8D30 whole cell extract D. 30 ug NIH-3T3 whole cell extract E. 30 ug Raw264.7 whole cell extract F. 30 ug C2C12 whole cell extract 12 % SDS-PAGE ETHE1 antibody [1621] dilution: 1:1000





### **Novus Biologicals USA**

10730 E. Briarwood Avenue  
Centennial, CO 80112  
USA  
Phone: 303.730.1950  
Toll Free: 1.888.506.6887  
Fax: 303.730.1966  
nb-customerservice@bio-techne.com

### **Bio-Techne Canada**

21 Canmotor Ave  
Toronto, ON M8Z 4E6  
Canada  
Phone: 905.827.6400  
Toll Free: 855.668.8722  
Fax: 905.827.6402  
canada.inquires@bio-techne.com

### **Bio-Techne Ltd**

19 Barton Lane  
Abingdon Science Park  
Abingdon, OX14 3NB, United Kingdom  
Phone: (44) (0) 1235 529449  
Free Phone: 0800 37 34 15  
Fax: (44) (0) 1235 533420  
info.EMEA@bio-techne.com

### **General Contact Information**

[www.novusbio.com](http://www.novusbio.com)  
Technical Support: nb-technical@bio-techne.com  
Orders: nb-customerservice@bio-techne.com  
General: novus@novusbio.com

### **Products Related to NBP2-43632**

HAF007	Goat anti-Mouse IgG Secondary Antibody [HRP]
NB720-B	Rabbit anti-Mouse IgG (H+L) Secondary Antibody [Biotin]
NBP2-27231	Mouse IgG2b Isotype Control (MPC-11)
NBP1-78881-100ug	Recombinant Human ETHE1 His Protein

### **Limitations**

This product is for research use only and is not approved for use in humans or in clinical diagnosis. Primary Antibodies are guaranteed for 1 year from date of receipt.

For more information on our 100% guarantee, please visit [www.novusbio.com/guarantee](http://www.novusbio.com/guarantee)

Earn gift cards/discounts by submitting a review: [www.novusbio.com/reviews/submit/NBP2-43632](http://www.novusbio.com/reviews/submit/NBP2-43632)

Earn gift cards/discounts by submitting a publication using this product:  
[www.novusbio.com/publications](http://www.novusbio.com/publications)

