

# Product Datasheet

## CBS Antibody (519) - Azide and BSA Free NBP2-43604

Unit Size: 0.1 ml

Aliquot and store at -20C or -80C. Avoid freeze-thaw cycles.

[www.novusbio.com](http://www.novusbio.com)



[technical@novusbio.com](mailto:technical@novusbio.com)

Protocols, Publications, Related Products, Reviews, Research Tools and Images at:  
[www.novusbio.com/NBP2-43604](http://www.novusbio.com/NBP2-43604)

Updated 2/23/2025 v.20.1

Earn rewards for product  
reviews and publications.

Submit a publication at [www.novusbio.com/publications](http://www.novusbio.com/publications)

Submit a review at [www.novusbio.com/reviews/destination/NBP2-43604](http://www.novusbio.com/reviews/destination/NBP2-43604)



**NBP2-43604**

CBS Antibody (519) - Azide and BSA Free

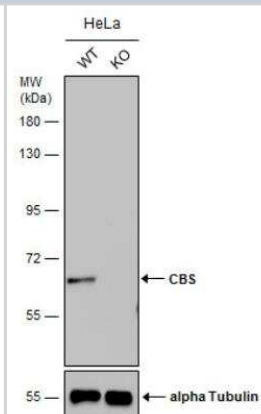
Product Information	
Unit Size	0.1 ml
Concentration	Concentrations vary lot to lot. See vial label for concentration. If unlisted please contact technical services.
Storage	Aliquot and store at -20C or -80C. Avoid freeze-thaw cycles.
Clonality	Monoclonal
Clone	519
Preservative	No Preservative
Isotype	IgG1
Purity	Protein G purified
Buffer	PBS
Target Molecular Weight	61 kDa

Product Description	
Host	Mouse
Gene ID	875
Gene Symbol	CBS
Species	Human, Mouse, Rat
Reactivity Notes	Xenopus laevis (93%).
Immunogen	Recombinant protein encompassing a sequence within the center region of human CBS. The exact sequence is proprietary.

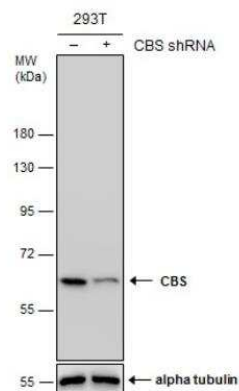
Product Application Details	
Applications	Western Blot, Immunohistochemistry, Immunohistochemistry-Paraffin, Knockdown Validated, Knockout Validated
Recommended Dilutions	Western Blot 1:500-1:3000, Immunohistochemistry 1:100-1:1000, Immunohistochemistry-Paraffin 1:100-1:1000, Knockout Validated, Knockdown Validated

**Images**

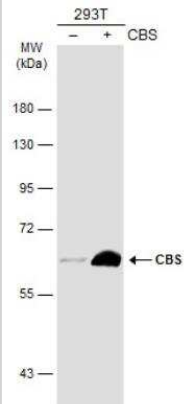
Western Blot: CBS Antibody (519) [NBP2-43604] - Wild-type (WT) and CBS knockout (KO) HeLa cell extracts (30 ug) were separated by 7.5% SDS-PAGE, and the membrane was blotted with CBS antibody [GT519]. HRP-conjugated anti-mouse IgG antibody was used to detect the primary antibody.



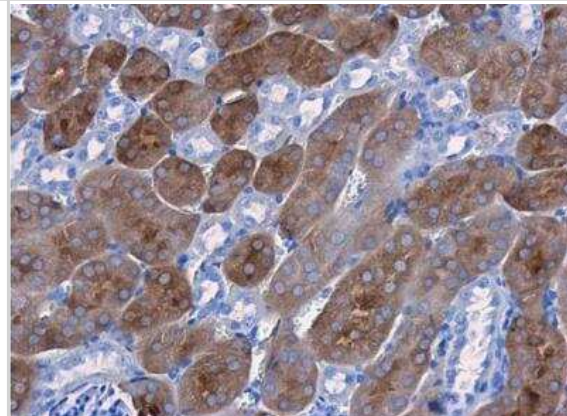
Western Blot: CBS Antibody (519) [NBP2-43604] - Non-transfected (-) and transfected (+) 293T whole cell extracts (30 ug) were separated by 7.5% SDS-PAGE, and the membrane was blotted with CBS antibody [GT519].



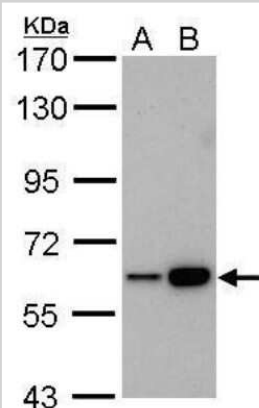
Western Blot: CBS Antibody (519) [NBP2-43604] - Non-transfected (-) and transfected (+) 293T whole cell extracts (30 ug) were separated by 7.5% SDS-PAGE, and the membrane was blotted with CBS antibody (519) diluted at 1:1000. HRP-conjugated anti-mouse IgG antibody was used to detect the primary antibody.



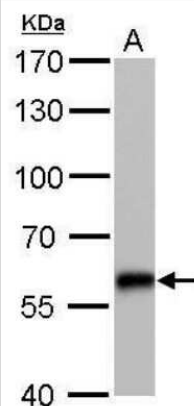
Immunohistochemistry-Paraffin: CBS Antibody (519) [NBP2-43604] - Paraffin-embedded mouse kidney. CBS antibody [519] diluted at 1:250.



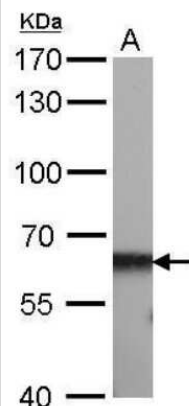
Western Blot: CBS Antibody (519) [NBP2-43604] - Analysis of A. 30 ug Raji whole cell lysate/extract B. 30 ug K562 whole cell lysate/extract 7.5 % SDS-PAGE CBS antibody [519] dilution: 1:1000



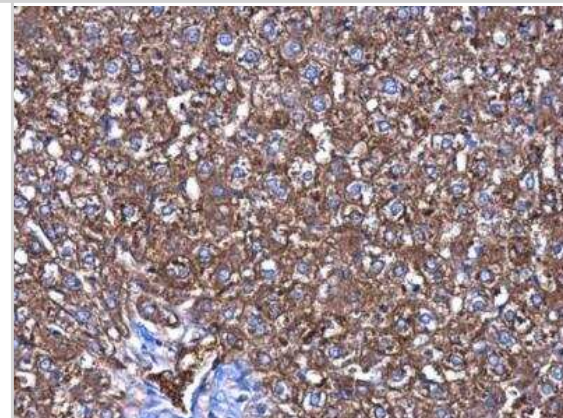
Western Blot: CBS Antibody (519) [NBP2-43604] - Analysis of A. 50 ug mouse liver lysate/extract 7.5 % SDS-PAGE CBS antibody [519] dilution: 1:2000.



Western Blot: CBS Antibody (519) [NBP2-43604] - Analysis of A. 50 ug rat liver lysate/extract 7.5 % SDS-PAGE CBS antibody [519] dilution: 1:1000



Immunohistochemistry-Paraffin: CBS Antibody (519) [NBP2-43604] - Paraffin-embedded rat liver. CBS antibody [519] diluted at 1:250.





### **Novus Biologicals USA**

10730 E. Briarwood Avenue  
Centennial, CO 80112  
USA  
Phone: 303.730.1950  
Toll Free: 1.888.506.6887  
Fax: 303.730.1966  
nb-customerservice@bio-techne.com

### **Bio-Techne Canada**

21 Canmotor Ave  
Toronto, ON M8Z 4E6  
Canada  
Phone: 905.827.6400  
Toll Free: 855.668.8722  
Fax: 905.827.6402  
canada.inquires@bio-techne.com

### **Bio-Techne Ltd**

19 Barton Lane  
Abingdon Science Park  
Abingdon, OX14 3NB, United Kingdom  
Phone: (44) (0) 1235 529449  
Free Phone: 0800 37 34 15  
Fax: (44) (0) 1235 533420  
info.EMEA@bio-techne.com

### **General Contact Information**

www.novusbio.com  
Technical Support: nb-technical@bio-techne.com  
Orders: nb-customerservice@bio-techne.com  
General: novus@novusbio.com

### **Products Related to NBP2-43604**

---

HAF007	Goat anti-Mouse IgG Secondary Antibody [HRP]
NB720-B	Rabbit anti-Mouse IgG (H+L) Secondary Antibody [Biotin]
NBP1-97005-0.5mg	Mouse IgG1 Isotype Control (MG1)
H00000875-P01-10ug	Recombinant Human CBS GST (N-Term) Protein

---

### **Limitations**

This product is for research use only and is not approved for use in humans or in clinical diagnosis. Primary Antibodies are guaranteed for 1 year from date of receipt.

For more information on our 100% guarantee, please visit [www.novusbio.com/guarantee](http://www.novusbio.com/guarantee)

Earn gift cards/discounts by submitting a review: [www.novusbio.com/reviews/submit/NBP2-43604](http://www.novusbio.com/reviews/submit/NBP2-43604)

Earn gift cards/discounts by submitting a publication using this product:  
[www.novusbio.com/publications](http://www.novusbio.com/publications)

