

# Product Datasheet

## HIST1H3A [ac Lys18] Antibody NBP2-43535

Unit Size: 0.1 ml

Aliquot and store at -20C or -80C. Avoid freeze-thaw cycles.

[www.novusbio.com](http://www.novusbio.com)



[technical@novusbio.com](mailto:technical@novusbio.com)

### Publications: 1

Protocols, Publications, Related Products, Reviews, Research Tools and Images at:  
[www.novusbio.com/NBP2-43535](http://www.novusbio.com/NBP2-43535)

Updated 10/23/2024 v.20.1

Earn rewards for product  
reviews and publications.

Submit a publication at [www.novusbio.com/publications](http://www.novusbio.com/publications)

Submit a review at [www.novusbio.com/reviews/destination/NBP2-43535](http://www.novusbio.com/reviews/destination/NBP2-43535)



**NBP2-43535****HIST1H3A [ac Lys18] Antibody**

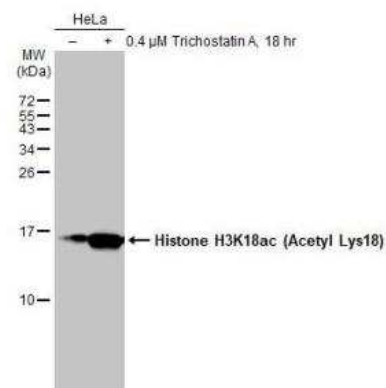
Product Information	
Unit Size	0.1 ml
Concentration	Concentrations vary lot to lot. See vial label for concentration. If unlisted please contact technical services.
Storage	Aliquot and store at -20C or -80C. Avoid freeze-thaw cycles.
Clonality	Polyclonal
Preservative	0.025% Proclin 300
Isotype	IgG
Purity	Antigen Affinity-purified
Buffer	PBS (pH 7), 20% Glycerol, 1% BSA

Product Description	
Host	Rabbit
Gene ID	8350
Gene Symbol	H3C1
Species	Human, Mouse, Rat
Immunogen	Carrier-protein conjugated synthetic peptide surrounding acetyl Lys18 of human HIST1H3A. The exact sequence is proprietary.

Product Application Details	
Applications	Western Blot, Dot Blot, Immunocytochemistry/ Immunofluorescence, Immunohistochemistry, Immunohistochemistry-Paraffin, Immunoprecipitation, Chromatin Immunoprecipitation (ChIP)
Recommended Dilutions	Western Blot 1:1000-1:10000, Immunohistochemistry, Immunocytochemistry/ Immunofluorescence 1:100-1:1000, Immunoprecipitation 1:100-1:500, Immunohistochemistry-Paraffin 1:100-1:1000, Dot Blot, Chromatin Immunoprecipitation (ChIP)
Application Notes	Dot Blot, Chip assay- Assay dependent

**Images**

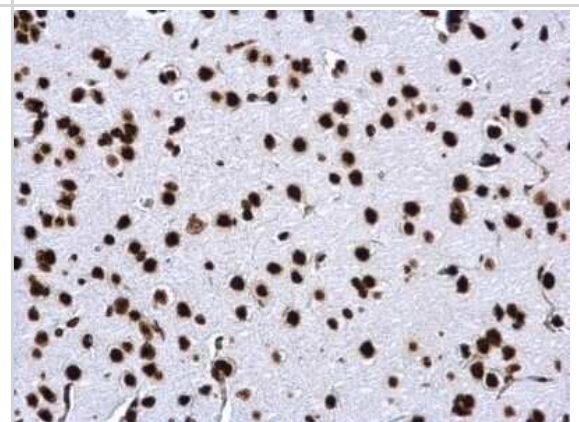
Western Blot: HIST1H3A [ac Lys18] Antibody [NBP2-43535] - Untreated (-) and treated (+) HeLa whole cell extracts (30 ug) were separated by 15% SDS-PAGE, and the membrane was blotted with Histone H3K18ac (Acetyl Lys18) antibody diluted at 1:5000. The HRP-conjugated anti-rabbit IgG antibody (NBP2-19301) was used to detect the primary antibody.



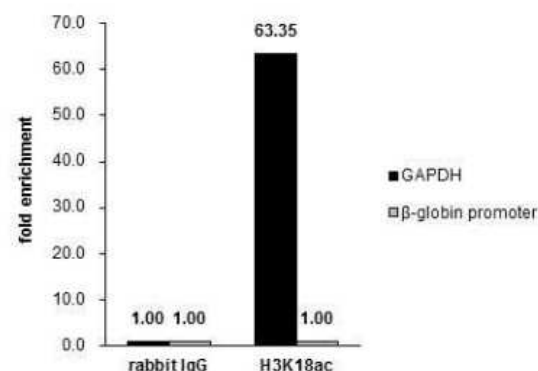
**Immunocytochemistry/Immunofluorescence:** HIST1H3A [ac Lys18] Antibody [NBP2-43535] - Analysis of HeLa cells were fixed in 4% paraformaldehyde at RT for 15 min. Green: Histone H3 (acetyl Lys18) protein stained by Histone H3 (acetyl Lys18) antibody diluted at 1:500. Red: alpha Tubulin antibody [114], a cytoskeleton marker, stained by diluted at 1:500. Blue: Hoechst 33342 staining.



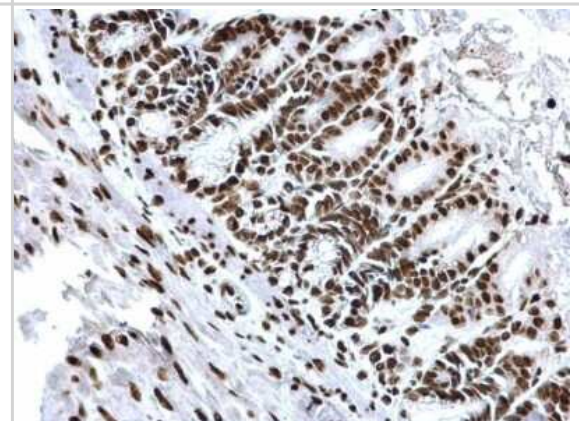
**Immunohistochemistry-Paraffin:** HIST1H3A [ac Lys18] Antibody [NBP2-43535] - Analysis of rat fore brain. Histone H3K18ac (acetyl Lys18) antibody dilution: 1:500.



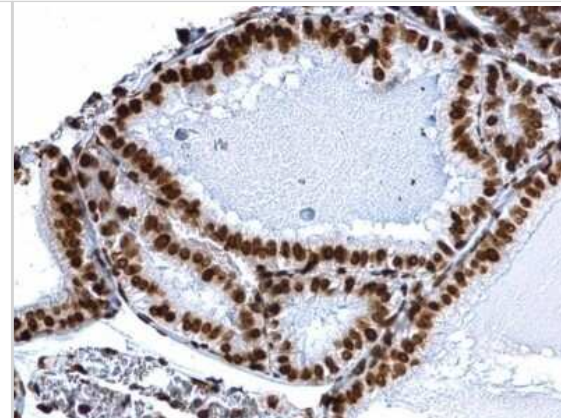
**Chromatin Immunoprecipitation:** HIST1H3A [ac Lys18] Antibody [NBP2-43535] - Cross-linked ChIP was performed with HeLa chromatin extract treated with Trichostatin A (0.4  $\mu$ M for 18 h) and 5  $\mu$ g of either control rabbit IgG or anti-Histone H3K18ac (acetyl Lys18) antibody. The precipitated DNA was detected by PCR with primer set targeting to GAPDH or beta-globin promoter.



**Immunohistochemistry-Paraffin:** HIST1H3A [ac Lys18] Antibody [NBP2-43535] - Analysis of mouse duodenum. Histone H3K18ac (acetyl Lys18) antibody dilution: 1:500.



**Immunohistochemistry-Paraffin: HIST1H3A [ac Lys18] Antibody [NBP2-43535]** - Analysis of mouse prostate. Histone H3K18ac (acetyl Lys18) antibody dilution: 1:500.



**Dot Blot: HIST1H3A [ac Lys18] Antibody [NBP2-43535]** - Analysis of anti-Histone H3 (acetyl Lys18) antibody with peptide samples. Varied amount of peptide samples were spotted onto positively charged nylon membrane and blotted with Histone H3 (acetyl Lys18) antibody 1:5000 dilution. A: Peptide samples of H3K18 un B: Peptide samples of H3K18ac C: Peptide samples of H3K9un D: Peptide samples of H3K9ac E: Peptide samples of H3K14un F: Peptide samples of H3K14ac G: Peptide samples of H3K27un H: Peptide samples of H3K27ac .

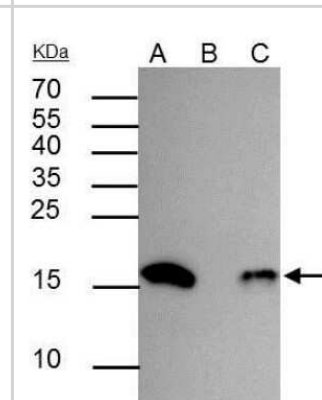


**Immunoprecipitation: HIST1H3A [ac Lys18] Antibody [NBP2-43535]** - Analysis of HeLa whole cell lysate/extract:

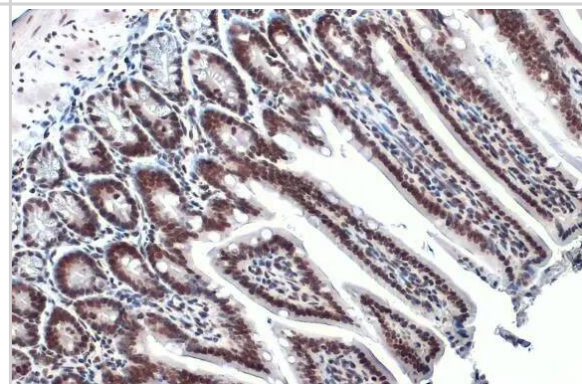
A. 30 ug whole cell lysate/extract of Histone H3 (acetyl Lys18) protein expressing HeLa cells (0.4uM TSA treatment for 18hr)

B. Control with 2.5 ug of pre-immune rabbit IgG C : Immunoprecipitation of Histone H3 (acetyl Lys18) protein by 2.5 ug of Histone H3 (acetyl Lys18) antibody 12% SDS-PAGE

The immunoprecipitated Histone H3 protein (acetyl Lys18) was detected by Histone H3 (acetyl Lys18) antibody. EasyBlot anti-rabbit IgG (HRP) was used as a secondary reagent.

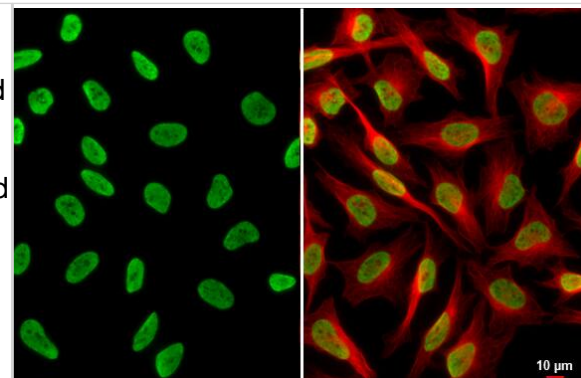


**Immunohistochemistry-Paraffin: HIST1H3A [ac Lys18] Antibody [NBP2-43535]** - HIST1H3A antibody detects HIST1H3A protein at nucleus by immunohistochemical analysis. Sample: Paraffin-embedded mouse colon. HIST1H3A stained by HIST1H3A antibody (NBP2-43535) diluted at 1:500. Antigen Retrieval: Citrate buffer, pH 6.0, 15 min

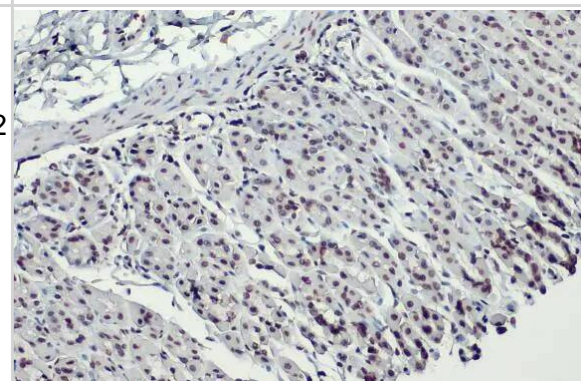




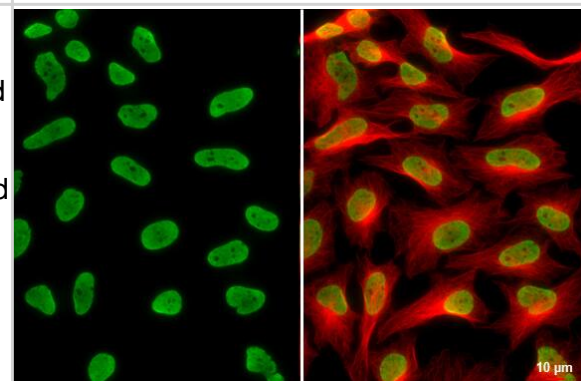
**Immunocytochemistry/ Immunofluorescence:** HIST1H3A [ac Lys18] Antibody [NBP2-43535] - HIST1H3A antibody detects HIST1H3A protein at nucleus by immunofluorescent analysis. Sample: HeLa cells were fixed in 4% paraformaldehyde at RT for 15 min. Green: HIST1H3A stained by HIST1H3A antibody (NBP2-43535) diluted at 1:500. Red: alpha Tubulin, a cytoskeleton marker, stained by alpha Tubulin antibody [GT114] diluted at 1:1000. Scale bar= 10um.



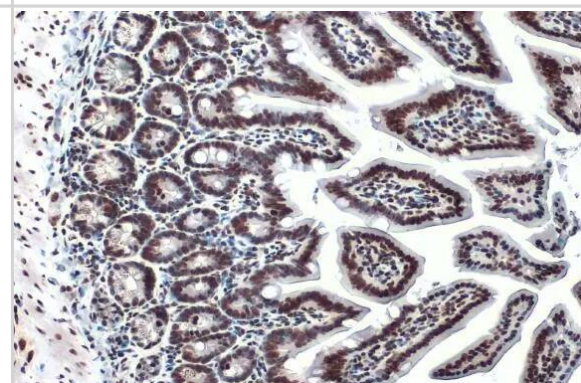
**Immunohistochemistry-Paraffin:** HIST1H3A [ac Lys18] Antibody [NBP2-43535] - HIST1H3A antibody detects Histone H3K18ac protein at nucleus by immunohistochemical analysis. Sample: Paraffin-embedded mouse stomach. Histone H3K18ac stained by HIST1H3A antibody (NBP2-43535) diluted at 1:500. Antigen Retrieval: Citrate buffer, pH 6.0, 15 min



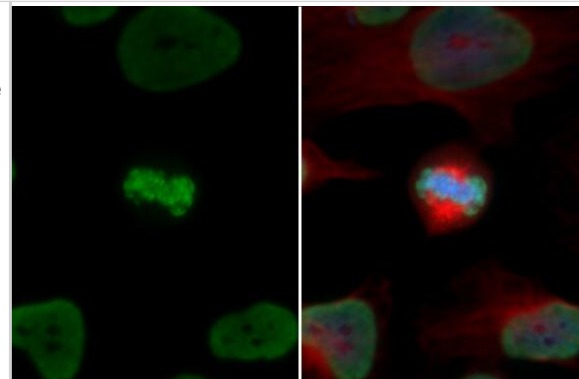
**Immunocytochemistry/ Immunofluorescence:** HIST1H3A [ac Lys18] Antibody [NBP2-43535] - HIST1H3A antibody detects HIST1H3A protein at nucleus by immunofluorescent analysis. Sample: HeLa cells were fixed in 4% paraformaldehyde at RT for 15 min. Green: HIST1H3A stained by HIST1H3A antibody (NBP2-43535) diluted at 1:500. Red: alpha Tubulin, a cytoskeleton marker, stained by alpha Tubulin antibody [GT114] diluted at 1:1000. Scale bar= 10um.



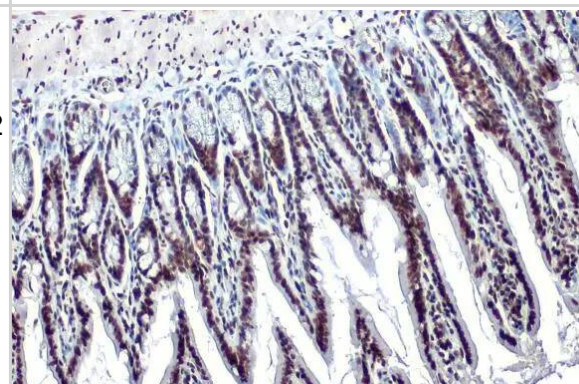
**Immunohistochemistry-Paraffin:** HIST1H3A [ac Lys18] Antibody [NBP2-43535] - HIST1H3A antibody detects HIST1H3A protein at nucleus by immunohistochemical analysis. Sample: Paraffin-embedded mouse colon. HIST1H3A stained by HIST1H3A antibody (NBP2-43535) diluted at 1:500. Antigen Retrieval: Citrate buffer, pH 6.0, 15 min



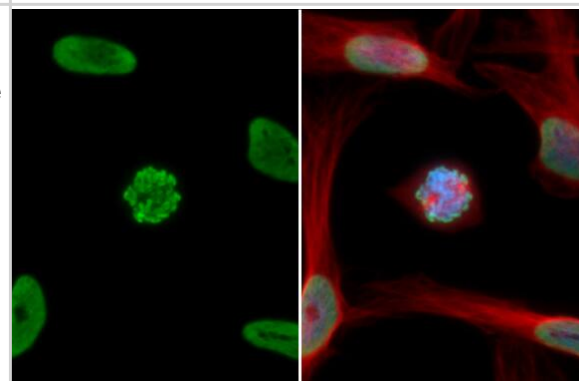
Immunocytochemistry/ Immunofluorescence: HIST1H3A [ac Lys18] Antibody [NBP2-43535] - HIST1H3A antibody detects HIST1H3A protein at chromosome by immunofluorescent analysis. Sample: HeLa cells were fixed in 4% paraformaldehyde at RT for 15 min. Green: HIST1H3A stained by HIST1H3A antibody (NBP2-43535) diluted at 1:500. Red: alpha Tubulin, a cytoskeleton marker, stained by alpha Tubulin antibody [GT114] diluted at 1:1000. Blue: Fluoroshield with DAPI .



Immunohistochemistry-Paraffin: HIST1H3A [ac Lys18] Antibody [NBP2-43535] - HIST1H3A antibody detects Histone H3K18ac protein at nucleus by immunohistochemical analysis. Sample: Paraffin-embedded mouse intestine. Histone H3K18ac stained by HIST1H3A antibody (NBP2-43535) diluted at 1:500. Antigen Retrieval: Citrate buffer, pH 6.0, 15 min



Immunocytochemistry/ Immunofluorescence: HIST1H3A [ac Lys18] Antibody [NBP2-43535] - HIST1H3A antibody detects HIST1H3A protein at chromosome by immunofluorescent analysis. Sample: HeLa cells were fixed in 4% paraformaldehyde at RT for 15 min. Green: HIST1H3A stained by HIST1H3A antibody (NBP2-43535) diluted at 1:500. Red: alpha Tubulin, a cytoskeleton marker, stained by alpha Tubulin antibody [GT114] diluted at 1:1000. Blue: Fluoroshield with DAPI .



## Publications

He X, Zhong X, Fang Y et al. AF9 sustains glycolysis in colorectal cancer via H3K9ac-mediated PCK2 and FBP1 transcription Clinical and Translational Medicine 2023-08-10 [PMID: 37565737]



### **Novus Biologicals USA**

10730 E. Briarwood Avenue  
Centennial, CO 80112  
USA  
Phone: 303.730.1950  
Toll Free: 1.888.506.6887  
Fax: 303.730.1966  
nb-customerservice@bio-techne.com

### **Bio-Techne Canada**

21 Canmotor Ave  
Toronto, ON M8Z 4E6  
Canada  
Phone: 905.827.6400  
Toll Free: 855.668.8722  
Fax: 905.827.6402  
canada.inquires@bio-techne.com

### **Bio-Techne Ltd**

19 Barton Lane  
Abingdon Science Park  
Abingdon, OX14 3NB, United Kingdom  
Phone: (44) (0) 1235 529449  
Free Phone: 0800 37 34 15  
Fax: (44) (0) 1235 533420  
info.EMEA@bio-techne.com

### **General Contact Information**

www.novusbio.com  
Technical Support: nb-technical@bio-  
techne.com  
Orders: nb-customerservice@bio-techne.com  
General: novus@novusbio.com

### **Products Related to NBP2-43535**

---

HAF008	Goat anti-Rabbit IgG Secondary Antibody [HRP]
NB7160	Goat anti-Rabbit IgG (H+L) Secondary Antibody [HRP]
NBP2-24891	Rabbit IgG Isotype Control
NBP2-06572	HIST2H3C Overexpression Lysate

---

### **Limitations**

This product is for research use only and is not approved for use in humans or in clinical diagnosis. Primary Antibodies are guaranteed for 1 year from date of receipt.

For more information on our 100% guarantee, please visit [www.novusbio.com/guarantee](http://www.novusbio.com/guarantee)

Earn gift cards/discounts by submitting a review: [www.novusbio.com/reviews/submit/NBP2-43535](http://www.novusbio.com/reviews/submit/NBP2-43535)

Earn gift cards/discounts by submitting a publication using this product:  
[www.novusbio.com/publications](http://www.novusbio.com/publications)

