

Product Datasheet

Ulex Europaeus Lectin 1 Native Protein NBP2-42700-5mg

Unit Size: 5 mg

Store at 4C. Do not freeze.

www.novusbio.com



technical@novusbio.com

Protocols, Publications, Related Products, Reviews, Research Tools and Images at:
www.novusbio.com/NBP2-42700

Updated 10/23/2024 v.20.1

Earn rewards for product
reviews and publications.

Submit a publication at www.novusbio.com/publications

Submit a review at www.novusbio.com/reviews/destination/NBP2-42700



NBP2-42700-5mg

Ulex Europaeus Lectin 1 Native Protein

Product Information

Unit Size	5 mg
Concentration	Lyoph
Storage	Store at 4C. Do not freeze.
Preservative	No Preservative
Reconstitution Instructions	Reconstitute with PBS (pH 6.8) to a final concentration of 1mg/ml.
Purity	>50% SDS-PAGE
Buffer	Lyophilized in buffer. Information about buffer components is proprietary.
Target Molecular Weight	68 kDa

Product Description

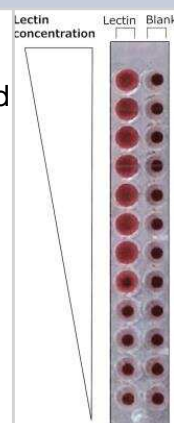
Description	A biologically active protein corresponding to Ulex Europaeus Lectin 1.
Species	Plant
Details of Functionality	Agglutination activity is expressed in ug/ml and is determined from serial dilutions in phosphate buffered saline, pH 6.8, of a 1 mg/ml solution. This activity is the lowest concentration to agglutinate a 2% suspension of human blood group O erythrocytes after 1 hour incubation at 25 degrees C.

Product Application Details

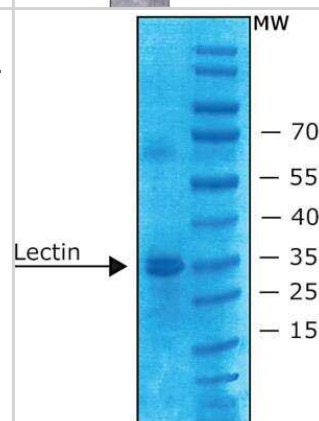
Applications	SDS-Page, Bioactivity, Product Image
Recommended Dilutions	SDS-Page, Bioactivity, Product Image
Application Notes	Ulex europaeus agglutinin has anti-H blood group specificity.

Images

Product Image: Ulex Europaeus Lectin 1 Native Protein [NBP2-42700] - Lectin from Ulex europaeus (gorse, furze) at a concentration of ~1mg solid/mL was serially diluted (2-fold, top to bottom of plate) and incubated with human erythrocytes type: O (4% v/v RBC) to calculate Minimum agglutination titer (MAT). Agglutination is defined as the inability of cells to form a tight button. PBS was used as blank.



SDS-Page: Ulex Europaeus Lectin 1 Native Protein [NBP2-42700] - Lectin from Ulex europaeus (gorse, furze) was assessed on SDS-PAGE.





Novus Biologicals USA

10730 E. Briarwood Avenue
Centennial, CO 80112
USA
Phone: 303.730.1950
Toll Free: 1.888.506.6887
Fax: 303.730.1966
nb-customerservice@bio-techne.com

Bio-Techne Canada

21 Canmotor Ave
Toronto, ON M8Z 4E6
Canada
Phone: 905.827.6400
Toll Free: 855.668.8722
Fax: 905.827.6402
canada.inquires@bio-techne.com

Bio-Techne Ltd

19 Barton Lane
Abingdon Science Park
Abingdon, OX14 3NB, United Kingdom
Phone: (44) (0) 1235 529449
Free Phone: 0800 37 34 15
Fax: (44) (0) 1235 533420
info.EMEA@bio-techne.com

General Contact Information

www.novusbio.com
Technical Support: nb-technical@bio-techne.com
Orders: nb-customerservice@bio-techne.com
General: novus@novusbio.com

Products Related to NBP2-42700-5mg

NB110-13922	Ulex Europaeus Lectin 1 Antibody
-------------	----------------------------------

Limitations

This product is for research use only and is not approved for use in humans or in clinical diagnosis. Peptides and proteins are guaranteed for 3 months from date of receipt.

For more information on our 100% guarantee, please visit www.novusbio.com/guarantee

Earn gift cards/discounts by submitting a review: www.novusbio.com/reviews/submit/NBP2-42700

Earn gift cards/discounts by submitting a publication using this product:
www.novusbio.com/publications

