

Product Datasheet

Laminin gamma 1 Antibody (CL3201) - BSA Free NBP2-42397

Unit Size: 0.1 ml

Store at 4C short term. Aliquot and store at -20C long term. Avoid freeze-thaw cycles.

www.novusbio.com



technical@novusbio.com

Protocols, Publications, Related Products, Reviews, Research Tools and Images at:
www.novusbio.com/NBP2-42397

Updated 2/27/2025 v.20.1

Earn rewards for product
reviews and publications.

Submit a publication at www.novusbio.com/publications

Submit a review at www.novusbio.com/reviews/destination/NBP2-42397



NBP2-42397

Laminin gamma 1 Antibody (CL3201) - BSA Free

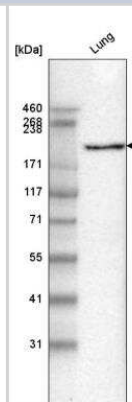
Product Information	
Unit Size	0.1 ml
Concentration	Concentrations vary lot to lot. See vial label for concentration. If unlisted please contact technical services.
Storage	Store at 4C short term. Aliquot and store at -20C long term. Avoid freeze-thaw cycles.
Clonality	Monoclonal
Clone	CL3201
Preservative	0.02% Sodium Azide
Isotype	IgG1
Purity	Protein A purified
Buffer	PBS (pH 7.2) and 40% Glycerol

Product Description	
Host	Mouse
Gene ID	3915
Gene Symbol	LAMC1
Species	Human
Reactivity Notes	Expected to cross react based on sequence identity: Mouse (86%), Rat (89%).
Immunogen	This antibody was developed using a recombinant protein derived from P11047, with the exact immunogen sequence remaining proprietary.

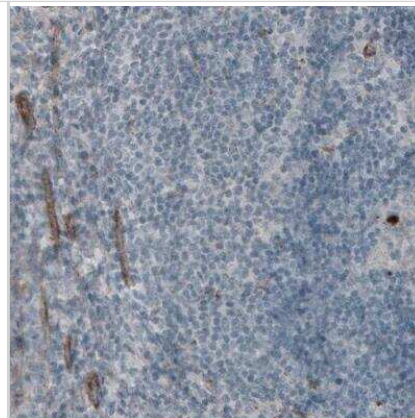
Product Application Details	
Applications	Western Blot, Immunohistochemistry, Immunohistochemistry-Paraffin
Recommended Dilutions	Western Blot 1 ug/ml, Immunohistochemistry 1:200 - 1:500, Immunohistochemistry-Paraffin 1:200-1:500
Application Notes	For IHC-Paraffin, HIER pH 6 retrieval is recommended.

Images

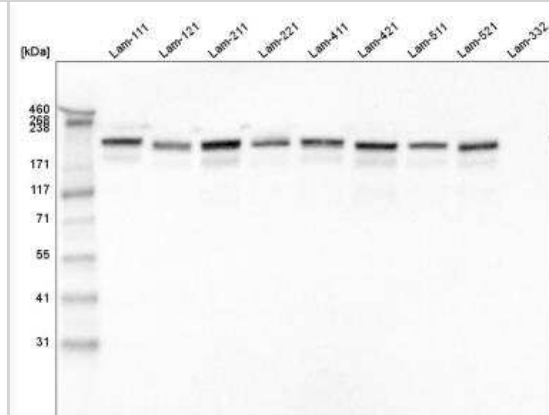
Western Blot: Laminin gamma 1 Antibody (CL3201) [NBP2-42397] - Analysis in human lung tissue.



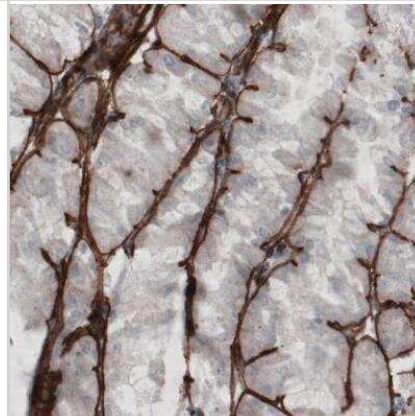
Immunohistochemistry-Paraffin: Laminin gamma 1 Antibody (CL3201) [NBP2-42397] - Staining of human tonsil shows absence of immunoreactivity in lymphoid cells (negative control).



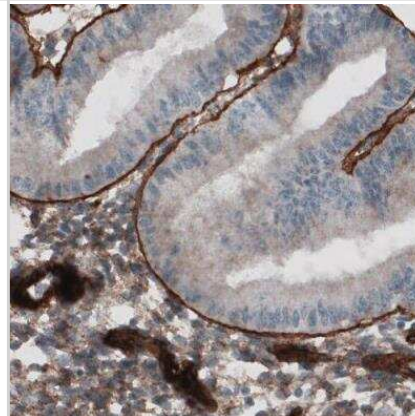
Western Blot: Laminin gamma 1 Antibody (CL3201) [NBP2-42397] - Analysis of purified human recombinant Laminin-111, Laminin-121, Laminin-211, Laminin-221, Laminin-411, Laminin-421, Laminin-511, Laminin-521 and Laminin-332.



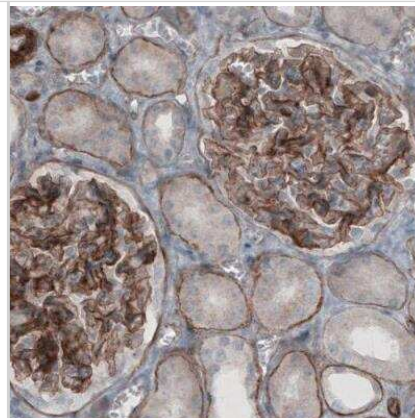
Immunohistochemistry-Paraffin: Laminin gamma 1 Antibody (CL3201) [NBP2-42397] - Staining of human stomach shows strong immunoreactivity in basement membrane of glandular epithelium.



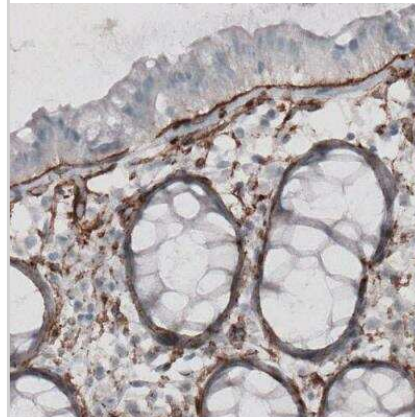
Immunohistochemistry-Paraffin: Laminin gamma 1 Antibody (CL3201) [NBP2-42397] - Staining of human endometrium shows strong positivity in basement membrane of glandular epithelium.



Immunohistochemistry-Paraffin: Laminin gamma 1 Antibody (CL3201) [NBP2-42397] - Staining of human kidney shows immunoreactivity in basement membrane of renal tubules and membranous positivity in glomeruli.



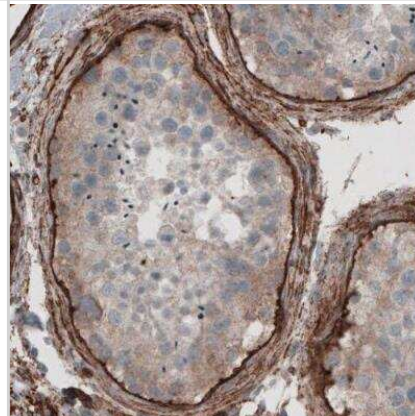
Immunohistochemistry-Paraffin: Laminin gamma 1 Antibody (CL3201) [NBP2-42397] - Staining of human endometrium shows strong positivity in basement membrane of glandular epithelium.



Immunohistochemistry-Paraffin: Laminin gamma 1 Antibody (CL3201) [NBP2-42397] - Staining of human cortex shows strong positivity in endothelium.



Immunohistochemistry-Paraffin: Laminin gamma 1 Antibody (CL3201) [NBP2-42397] - Staining of human testis shows immunoreactivity in basement membrane of seminiferous tubules.





Novus Biologicals USA

10730 E. Briarwood Avenue
Centennial, CO 80112
USA
Phone: 303.730.1950
Toll Free: 1.888.506.6887
Fax: 303.730.1966
nb-customerservice@bio-techne.com

Bio-Techne Canada

21 Canmotor Ave
Toronto, ON M8Z 4E6
Canada
Phone: 905.827.6400
Toll Free: 855.668.8722
Fax: 905.827.6402
canada.inquires@bio-techne.com

Bio-Techne Ltd

19 Barton Lane
Abingdon Science Park
Abingdon, OX14 3NB, United Kingdom
Phone: (44) (0) 1235 529449
Free Phone: 0800 37 34 15
Fax: (44) (0) 1235 533420
info.EMEA@bio-techne.com

General Contact Information

www.novusbio.com
Technical Support: nb-technical@bio-techne.com
Orders: nb-customerservice@bio-techne.com
General: novus@novusbio.com

Products Related to NBP2-42397

HAF007	Goat anti-Mouse IgG Secondary Antibody [HRP]
NB720-B	Rabbit anti-Mouse IgG (H+L) Secondary Antibody [Biotin]
NBP1-97005-0.5mg	Mouse IgG1 Isotype Control (MG1)
H00003915-P01-10ug	Recombinant Human Laminin gamma 1 GST (N-Term) Protein

Limitations

This product is for research use only and is not approved for use in humans or in clinical diagnosis. Primary Antibodies are guaranteed for 1 year from date of receipt.

For more information on our 100% guarantee, please visit www.novusbio.com/guarantee

Earn gift cards/discounts by submitting a review: www.novusbio.com/reviews/submit/NBP2-42397

Earn gift cards/discounts by submitting a publication using this product:
www.novusbio.com/publications

