

Product Datasheet

Laminin gamma 1 Antibody (CL3199) - BSA Free NBP2-42396

Unit Size: 0.1 ml

Store at 4C short term. Aliquot and store at -20C long term. Avoid freeze-thaw cycles.

www.novusbio.com



technical@novusbio.com

Protocols, Publications, Related Products, Reviews, Research Tools and Images at:
www.novusbio.com/NBP2-42396

Updated 2/27/2025 v.20.1

Earn rewards for product
reviews and publications.

Submit a publication at www.novusbio.com/publications

Submit a review at www.novusbio.com/reviews/destination/NBP2-42396



NBP2-42396**Laminin gamma 1 Antibody (CL3199) - BSA Free**

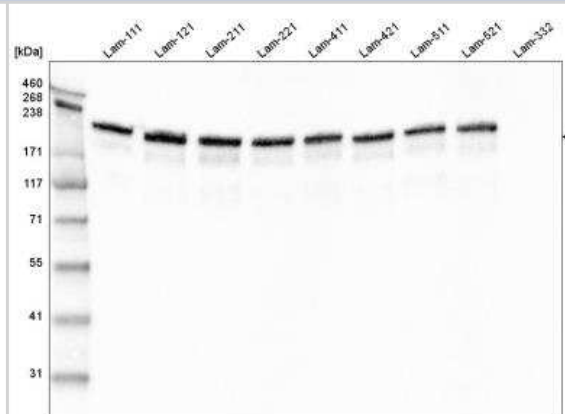
Product Information	
Unit Size	0.1 ml
Concentration	Concentrations vary lot to lot. See vial label for concentration. If unlisted please contact technical services.
Storage	Store at 4C short term. Aliquot and store at -20C long term. Avoid freeze-thaw cycles.
Clonality	Monoclonal
Clone	CL3199
Preservative	0.02% Sodium Azide
Isotype	IgG2b
Purity	Protein A purified
Buffer	PBS (pH 7.2) and 40% Glycerol

Product Description	
Host	Mouse
Gene ID	3915
Gene Symbol	LAMC1
Species	Human, Rat
Reactivity Notes	Mouse (86%).
Immunogen	This antibody was developed using a recombinant protein derived from P11047, with the exact immunogen sequence remaining proprietary.

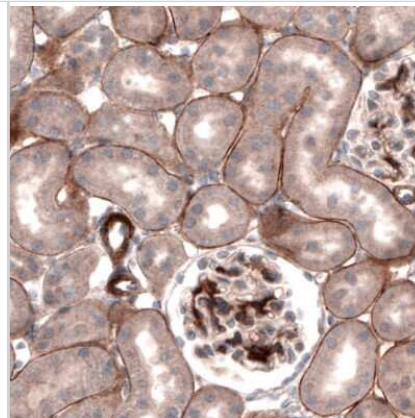
Product Application Details	
Applications	Western Blot, Immunohistochemistry, Immunohistochemistry-Paraffin
Recommended Dilutions	Western Blot 1 ug/ml, Immunohistochemistry 1:2500 - 1:5000, Immunohistochemistry-Paraffin 1:2500-1:5000
Application Notes	For IHC-Paraffin, HIER pH 6 retrieval is recommended.

Images

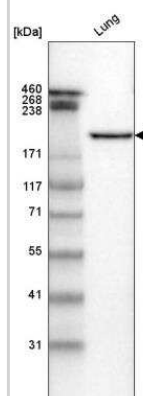
Western Blot: Laminin gamma 1 Antibody (CL3199) [NBP2-42396] - Analysis of purified human recombinant Laminin-111, Laminin-121, Laminin-211, Laminin-221, Laminin-411, Laminin-421, Laminin-511, Laminin-521 and Laminin-332.



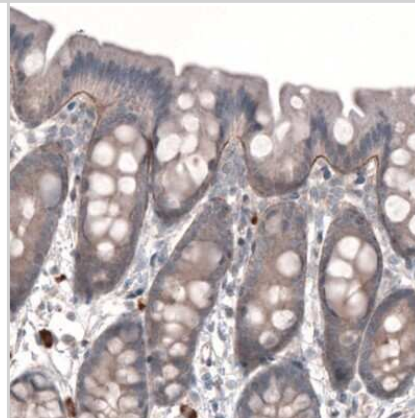
Immunohistochemistry-Paraffin: Laminin gamma 1 Antibody (CL3199) [NBP2-42396] - Staining of rat kidney shows immunoreactivity in basement membranes of renal tubules and glomeruli.



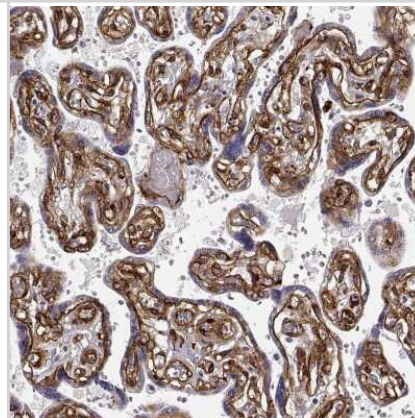
Western Blot: Laminin gamma 1 Antibody (CL3199) [NBP2-42396] - Analysis in human lung tissue.



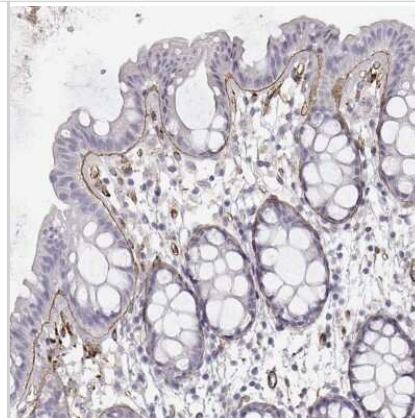
Immunohistochemistry-Paraffin: Laminin gamma 1 Antibody (CL3199) [NBP2-42396] - Staining of rat rectum shows immunoreactivity in basement membrane of glandular epithelium.



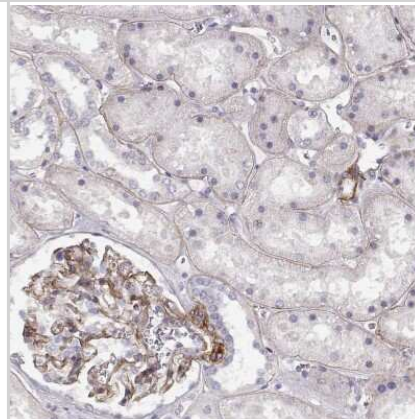
Immunohistochemistry-Paraffin: Laminin gamma 1 Antibody (CL3199) [NBP2-42396] - Staining of human placenta shows strong positivity in basement membrane of trophoblastic cells.



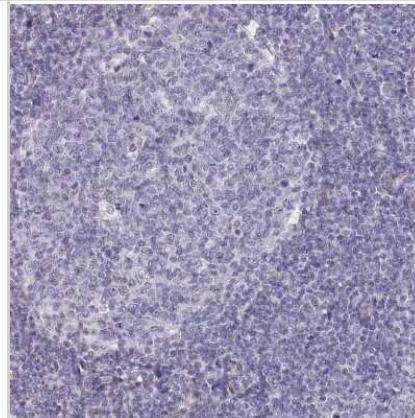
Immunohistochemistry-Paraffin: Laminin gamma 1 Antibody (CL3199) [NBP2-42396] - Staining of human rectum shows moderate positivity in basement membrane of glandular cells.



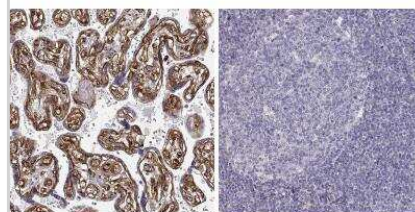
Immunohistochemistry-Paraffin: Laminin gamma 1 Antibody (CL3199) [NBP2-42396] - Staining of human kidney shows moderate positivity in basement membrane of cells in tubules and glomeruli.



Immunohistochemistry-Paraffin: Laminin gamma 1 Antibody (CL3199) [NBP2-42396] - Staining of human tonsil shows no positivity in lymphoid cells as expected.



Immunohistochemistry-Paraffin: Laminin gamma 1 Antibody (CL3199) [NBP2-42396] - Staining in human placenta and tonsil tissues. Corresponding LAMC1 RNA-seq data are presented for the same tissues.



LAMC1 in Placenta

LAMC1 in Tonsil





Novus Biologicals USA

10730 E. Briarwood Avenue
Centennial, CO 80112
USA
Phone: 303.730.1950
Toll Free: 1.888.506.6887
Fax: 303.730.1966
nb-customerservice@bio-techne.com

Bio-Techne Canada

21 Canmotor Ave
Toronto, ON M8Z 4E6
Canada
Phone: 905.827.6400
Toll Free: 855.668.8722
Fax: 905.827.6402
canada.inquires@bio-techne.com

Bio-Techne Ltd

19 Barton Lane
Abingdon Science Park
Abingdon, OX14 3NB, United Kingdom
Phone: (44) (0) 1235 529449
Free Phone: 0800 37 34 15
Fax: (44) (0) 1235 533420
info.EMEA@bio-techne.com

General Contact Information

www.novusbio.com
Technical Support: nb-technical@bio-techne.com
Orders: nb-customerservice@bio-techne.com
General: novus@novusbio.com

Products Related to NBP2-42396

NBP2-42396PEP	Laminin gamma 1 Recombinant Protein Antigen
HAF007	Goat anti-Mouse IgG Secondary Antibody [HRP]
NB720-B	Rabbit anti-Mouse IgG (H+L) Secondary Antibody [Biotin]
NBP2-27231	Mouse IgG2b Isotype Control (MPC-11)

Limitations

This product is for research use only and is not approved for use in humans or in clinical diagnosis. Primary Antibodies are guaranteed for 1 year from date of receipt.

For more information on our 100% guarantee, please visit www.novusbio.com/guarantee

Earn gift cards/discounts by submitting a review: www.novusbio.com/reviews/submit/NBP2-42396

Earn gift cards/discounts by submitting a publication using this product:
www.novusbio.com/publications

