

Product Datasheet

Laminin gamma 1 Antibody (CL3195) - BSA Free NBP2-42394

Unit Size: 0.1 ml

Store at 4C short term. Aliquot and store at -20C long term. Avoid freeze-thaw cycles.

www.novusbio.com



technical@novusbio.com

Protocols, Publications, Related Products, Reviews, Research Tools and Images at:
www.novusbio.com/NBP2-42394

Updated 2/27/2025 v.20.1

Earn rewards for product
reviews and publications.

Submit a publication at www.novusbio.com/publications

Submit a review at www.novusbio.com/reviews/destination/NBP2-42394



NBP2-42394

Laminin gamma 1 Antibody (CL3195) - BSA Free

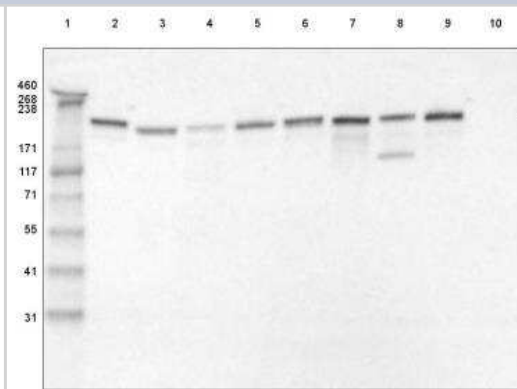
Product Information	
Unit Size	0.1 ml
Concentration	Concentrations vary lot to lot. See vial label for concentration. If unlisted please contact technical services.
Storage	Store at 4C short term. Aliquot and store at -20C long term. Avoid freeze-thaw cycles.
Clonality	Monoclonal
Clone	CL3195
Preservative	0.02% Sodium Azide
Isotype	IgG2b
Purity	Protein A purified
Buffer	PBS (pH 7.2) and 40% Glycerol

Product Description	
Host	Mouse
Gene ID	3915
Gene Symbol	LAMC1
Species	Human
Reactivity Notes	Please note that this antibody is reactive to Mouse and derived from the same host, Mouse. Mouse-On-Mouse blocking reagent may be needed for IHC and ICC experiments to reduce high background signal. You can find these reagents under catalog numbers PK-2200-NB and MP-2400-NB. Please contact Technical Support if you have any questions
Immunogen	This antibody was developed using a recombinant protein derived from P11047, with the exact immunogen sequence remaining proprietary.

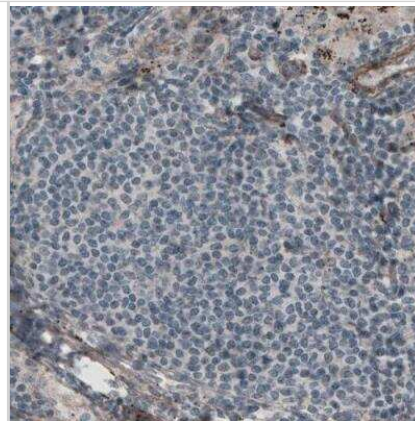
Product Application Details	
Applications	Western Blot, Immunohistochemistry, Immunohistochemistry-Paraffin
Recommended Dilutions	Western Blot 1 ug/ml, Immunohistochemistry 1:500 - 1:1000, Immunohistochemistry-Paraffin 1:500-1:1000
Application Notes	For IHC-Paraffin, HIER pH 6 retrieval is recommended.

Images

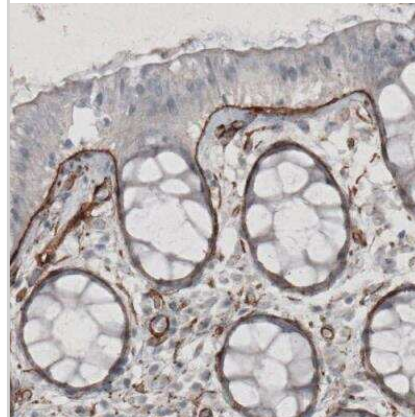
Western Blot: Laminin gamma 1 Antibody (CL3195) [NBP2-42394] -
 Lane 1: Marker [kDa] 460, 268, 238, 171, 117, 71, 55, 41, 31 Lane 2:
 Purified human recombinant protein Laminin-111 Lane 3: Purified human
 recombinant protein Laminin-121 Lane 4: Purified human recombinant
 protein Laminin-211 Lane 5: Purified human recombinant protein
 Laminin-221 Lane 6: Purified human recombinant protein Laminin-411
 Lane 7: Purified human recombinant protein Laminin-421 Lane 8:
 Purified human recombinant protein Laminin-511 Lane 9: Purified human
 recombinant protein Laminin-521 Lane 10: Purified human recombinant
 protein Laminin-332



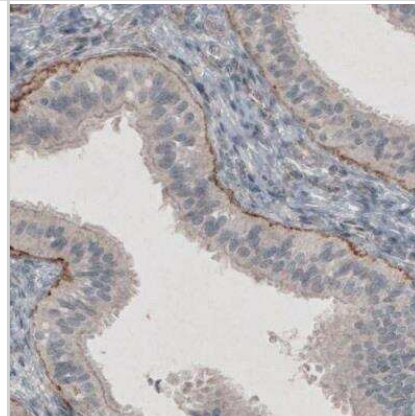
Immunohistochemistry-Paraffin: Laminin gamma 1 Antibody (CL3195) [NBP2-42394] - Staining of human lymph node shows absence of immunoreactivity in lymphoid cells (negative control).



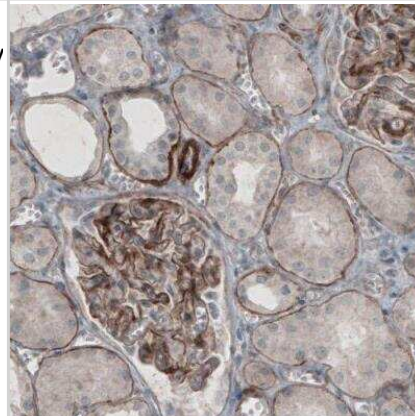
Immunohistochemistry-Paraffin: Laminin gamma 1 Antibody (CL3195) [NBP2-42394] - Staining of human rectum shows strong immunoreactivity in basement membrane of glandular epithelium.



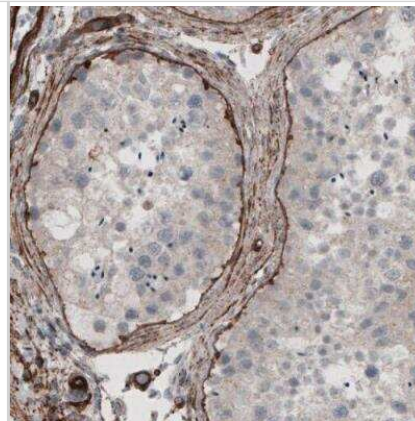
Immunohistochemistry-Paraffin: Laminin gamma 1 Antibody (CL3195) [NBP2-42394] - Staining of human fallopian tube shows strong positivity in basement membrane of glandular epithelium.



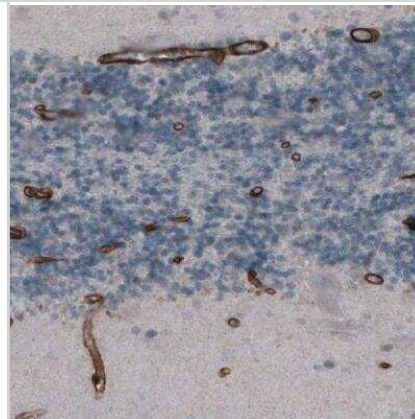
Immunohistochemistry-Paraffin: Laminin gamma 1 Antibody (CL3195) [NBP2-42394] - Staining of human kidney shows strong immunoreactivity in basement membrane of renal tubules and membranous positivity in glomeruli.



Immunohistochemistry-Paraffin: Laminin gamma 1 Antibody (CL3195) [NBP2-42394] - Staining of human testis shows strong positivity in basement membrane in seminiferous tubules.



Immunohistochemistry-Paraffin: Laminin gamma 1 Antibody (CL3195) [NBP2-42394] - Staining of human cerebellum shows strong immunoreactivity in endothelium.





Novus Biologicals USA

10730 E. Briarwood Avenue
Centennial, CO 80112
USA
Phone: 303.730.1950
Toll Free: 1.888.506.6887
Fax: 303.730.1966
nb-customerservice@bio-techne.com

Bio-Techne Canada

21 Canmotor Ave
Toronto, ON M8Z 4E6
Canada
Phone: 905.827.6400
Toll Free: 855.668.8722
Fax: 905.827.6402
canada.inquires@bio-techne.com

Bio-Techne Ltd

19 Barton Lane
Abingdon Science Park
Abingdon, OX14 3NB, United Kingdom
Phone: (44) (0) 1235 529449
Free Phone: 0800 37 34 15
Fax: (44) (0) 1235 533420
info.EMEA@bio-techne.com

General Contact Information

www.novusbio.com
Technical Support: nb-technical@bio-techne.com
Orders: nb-customerservice@bio-techne.com
General: novus@novusbio.com

Products Related to NBP2-42394

NBP2-42394PEP	Laminin gamma 1 Recombinant Protein Antigen
HAF007	Goat anti-Mouse IgG Secondary Antibody [HRP]
NB720-B	Rabbit anti-Mouse IgG (H+L) Secondary Antibody [Biotin]
NBP2-27231	Mouse IgG2b Isotype Control (MPC-11)

Limitations

This product is for research use only and is not approved for use in humans or in clinical diagnosis. Primary Antibodies are guaranteed for 1 year from date of receipt.

For more information on our 100% guarantee, please visit www.novusbio.com/guarantee

Earn gift cards/discounts by submitting a review: www.novusbio.com/reviews/submit/NBP2-42394

Earn gift cards/discounts by submitting a publication using this product:
www.novusbio.com/publications

