

Product Datasheet

Laminin Antibody (CL3087) - BSA Free NBP2-42389

Unit Size: 0.1 ml

Store at 4C short term. Aliquot and store at -20C long term. Avoid freeze-thaw cycles.

www.novusbio.com



technical@novusbio.com

Protocols, Publications, Related Products, Reviews, Research Tools and Images at:
www.novusbio.com/NBP2-42389

Updated 2/27/2025 v.20.1

Earn rewards for product
reviews and publications.

Submit a publication at www.novusbio.com/publications

Submit a review at www.novusbio.com/reviews/destination/NBP2-42389



NBP2-42389

Laminin Antibody (CL3087) - BSA Free

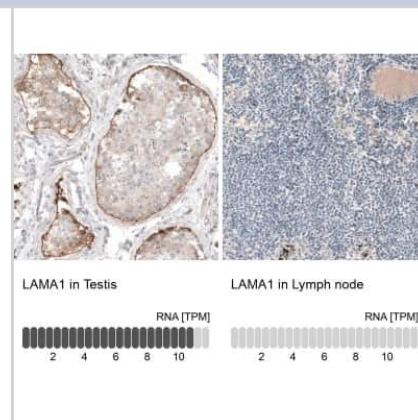
Product Information	
Unit Size	0.1 ml
Concentration	Concentrations vary lot to lot. See vial label for concentration. If unlisted please contact technical services.
Storage	Store at 4C short term. Aliquot and store at -20C long term. Avoid freeze-thaw cycles.
Clonality	Monoclonal
Clone	CL3087
Preservative	0.02% Sodium Azide
Isotype	IgG1
Purity	Protein A purified
Buffer	PBS (pH 7.2) and 40% Glycerol
Target Molecular Weight	337 kDa

Product Description	
Host	Mouse
Gene ID	284217
Gene Symbol	LAMA1
Species	Human
Reactivity Notes	Expected to cross react based on sequence identity: Mouse (89%). Please note that this antibody is reactive to Mouse and derived from the same host, Mouse. Mouse-On-Mouse blocking reagent may be needed for IHC and ICC experiments to reduce high background signal. You can find these reagents under catalog numbers PK-2200-NB and MP-2400-NB. Please contact Technical Support if you have any questions.
Immunogen	This antibody was developed using a recombinant protein derived from P25391, with the exact immunogen sequence remaining proprietary.

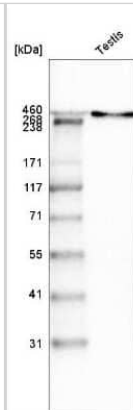
Product Application Details	
Applications	Western Blot, Immunohistochemistry, Immunohistochemistry-Paraffin
Recommended Dilutions	Western Blot 1 ug/ml, Immunohistochemistry 1:200 - 1:500, Immunohistochemistry-Paraffin 1:200-1:500
Application Notes	For IHC-Paraffin, HIER pH 6 retrieval is recommended.

Images

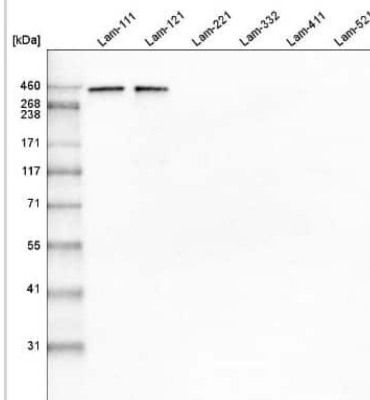
Immunohistochemistry-Paraffin: Laminin Antibody (CL3087) [NBP2-42389] - Staining in human testis and lymph node tissues with [NBP2-42389]. Corresponding LAMA1 RNA-seq data are presented for the same tissues.



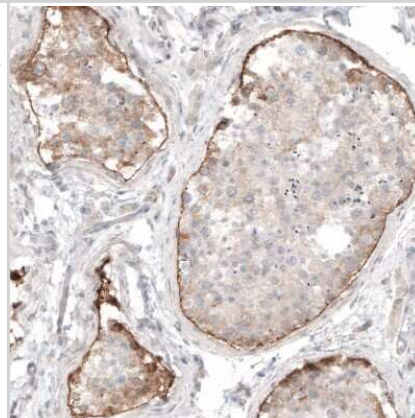
Western Blot: Laminin Antibody (CL3087) [NBP2-42389] - Analysis in human testis tissue using Laminin Antibody (CL3087) [NBP2-42389]. Observed molecular weight ~400 kDa. Theoretical molecular weight for NBP2-42389 is 337 kDa.



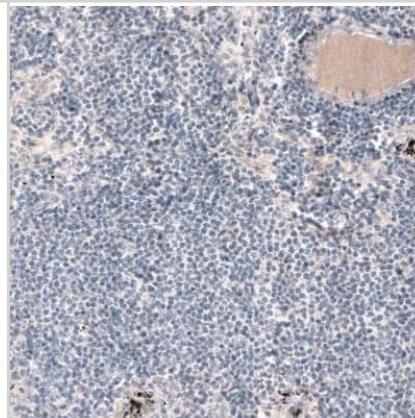
Western Blot: Laminin Antibody (CL3087) [NBP2-42389] - Analysis of purified human recombinant Laminin-111, Laminin-121, Laminin-221, Laminin-332, Laminin-411 and Laminin-521, using Laminin Antibody (CL3087) [NBP2-42389]. Observed molecular weight ~400 kDa. Theoretical molecular weight for NBP2-42389 is 337 kDa.



Immunohistochemistry-Paraffin: Laminin Antibody (CL3087) [NBP2-42389] - Staining of human testis with Laminin Antibody (CL3087) [NBP2-42389] shows moderate positivity in basement membrane of cells in seminiferous ducts.



Immunohistochemistry-Paraffin: Laminin Antibody (CL3087) [NBP2-42389] - Staining of human lymph node with Laminin Antibody (CL3087) [NBP2-42389] shows no positivity in lymphoid cells as expected.





Novus Biologicals USA

10730 E. Briarwood Avenue
Centennial, CO 80112
USA
Phone: 303.730.1950
Toll Free: 1.888.506.6887
Fax: 303.730.1966
nb-customerservice@bio-techne.com

Bio-Techne Canada

21 Canmotor Ave
Toronto, ON M8Z 4E6
Canada
Phone: 905.827.6400
Toll Free: 855.668.8722
Fax: 905.827.6402
canada.inquires@bio-techne.com

Bio-Techne Ltd

19 Barton Lane
Abingdon Science Park
Abingdon, OX14 3NB, United Kingdom
Phone: (44) (0) 1235 529449
Free Phone: 0800 37 34 15
Fax: (44) (0) 1235 533420
info.EMEA@bio-techne.com

General Contact Information

www.novusbio.com
Technical Support: nb-technical@bio-techne.com
Orders: nb-customerservice@bio-techne.com
General: novus@novusbio.com

Products Related to NBP2-42389

HAF007	Goat anti-Mouse IgG Secondary Antibody [HRP]
NB720-B	Rabbit anti-Mouse IgG (H+L) Secondary Antibody [Biotin]
NBP1-97005-0.5mg	Mouse IgG1 Isotype Control (MG1)
NBP2-42389PEP	Laminin Recombinant Protein Antigen

Limitations

This product is for research use only and is not approved for use in humans or in clinical diagnosis. Primary Antibodies are guaranteed for 1 year from date of receipt.

For more information on our 100% guarantee, please visit www.novusbio.com/guarantee

Earn gift cards/discounts by submitting a review: www.novusbio.com/reviews/submit/NBP2-42389

Earn gift cards/discounts by submitting a publication using this product:
www.novusbio.com/publications

