

Product Datasheet

SLC34A1 Antibody (10B1.3E9) [PerCP] NBP2-42216PCP

Unit Size: 0.1 ml

Store at 4C in the dark.

www.novusbio.com



technical@novusbio.com

Protocols, Publications, Related Products, Reviews, Research Tools and Images at:
www.novusbio.com/NBP2-42216PCP

Updated 10/23/2024 v.20.1

Earn rewards for product
reviews and publications.

Submit a publication at www.novusbio.com/publications

Submit a review at www.novusbio.com/reviews/destination/NBP2-42216PCP



NBP2-42216PCP

SLC34A1 Antibody (10B1.3E9) [PerCP]

Product Information

Unit Size	0.1 ml
Concentration	Please see the vial label for concentration. If unlisted please contact technical services.
Storage	Store at 4C in the dark.
Clonality	Monoclonal
Clone	10B1.3E9
Preservative	0.05% Sodium Azide
Isotype	IgG1 Kappa
Conjugate	PerCP
Purity	Protein G purified
Buffer	PBS

Product Description

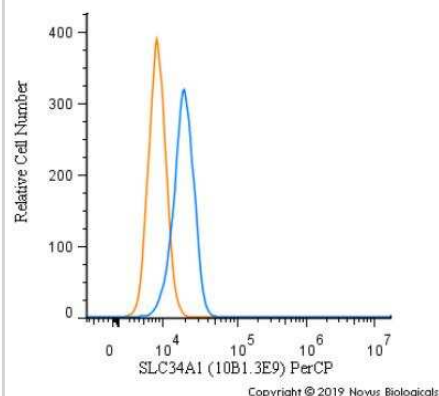
Host	Mouse
Gene ID	6569
Gene Symbol	SLC34A1
Species	Human, Mouse
Marker	Tubulointerstitium Marker
Immunogen	Partial synthetic peptide made to an internal portion of the human SLC34A1 protein (between amino acids 25-150) [UniProt Q06495]

Product Application Details

Applications	Western Blot, Flow Cytometry, Immunocytochemistry/ Immunofluorescence, Immunohistochemistry, Immunohistochemistry-Paraffin, Immunoprecipitation
Recommended Dilutions	Western Blot, Flow Cytometry, Immunohistochemistry, Immunocytochemistry/ Immunofluorescence, Immunoprecipitation, Immunohistochemistry-Paraffin
Application Notes	Optimal dilution of this antibody should be experimentally determined.

Images

Flow Cytometry: SLC34A1 Antibody (10B1.3E9) [PerCP] [NBP2-42216PCP] - An intracellular stain was performed on Hek293 cells with SLC34A1 Antibody [10B1.3E9] NBP2-42216PCP (blue) and a matched isotype control (orange). Cells were fixed with 4% PFA and then permeabilized with 0.1% saponin. Cells were incubated in an antibody dilution of 10 ug/mL for 30 minutes at room temperature. Both antibodies were conjugated to PerCP.





Novus Biologicals USA

10730 E. Briarwood Avenue
Centennial, CO 80112
USA
Phone: 303.730.1950
Toll Free: 1.888.506.6887
Fax: 303.730.1966
nb-customerservice@bio-techne.com

Bio-Techne Canada

21 Canmotor Ave
Toronto, ON M8Z 4E6
Canada
Phone: 905.827.6400
Toll Free: 855.668.8722
Fax: 905.827.6402
canada.inquires@bio-techne.com

Bio-Techne Ltd

19 Barton Lane
Abingdon Science Park
Abingdon, OX14 3NB, United Kingdom
Phone: (44) (0) 1235 529449
Free Phone: 0800 37 34 15
Fax: (44) (0) 1235 533420
info.EMEA@bio-techne.com

General Contact Information

www.novusbio.com
Technical Support: nb-technical@bio-techne.com
Orders: nb-customerservice@bio-techne.com
General: novus@novusbio.com

Products Related to NBP2-42216PCP

NBP1-43319PCP-0.5ml	Mouse IgG1 Kappa Isotype Control (P3.6.2.8.1) [PerCP]
NBP2-42216	SLC34A1 Antibody (10B1.3E9) - BSA Free
NBP2-13328PEP	SLC34A1 Recombinant Protein Antigen
8090-ZN-025	PHEX

Limitations

This product is for research use only and is not approved for use in humans or in clinical diagnosis. Primary Antibodies are guaranteed for 1 year from date of receipt.

For more information on our 100% guarantee, please visit www.novusbio.com/guarantee

Earn gift cards/discounts by submitting a review: www.novusbio.com/reviews/submit/NBP2-42216PCP

Earn gift cards/discounts by submitting a publication using this product:
www.novusbio.com/publications

