

Product Datasheet

Mitofusin 2 Antibody (S153-5) - BSA Free NBP2-42188

Unit Size: 0.1 mg

Store at 4C short term. Aliquot and store at -20C long term. Avoid freeze-thaw cycles.

www.novusbio.com



technical@novusbio.com

Protocols, Publications, Related Products, Reviews, Research Tools and Images at:
www.novusbio.com/NBP2-42188

Updated 2/23/2025 v.20.1

Earn rewards for product
reviews and publications.

Submit a publication at www.novusbio.com/publications

Submit a review at www.novusbio.com/reviews/destination/NBP2-42188



NBP2-42188

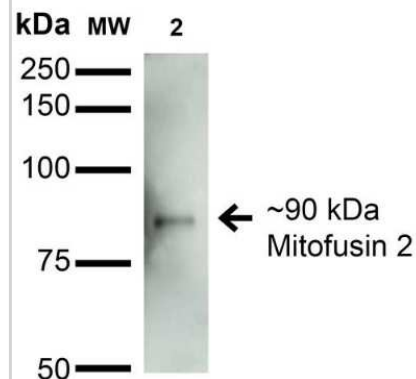
Mitofusin 2 Antibody (S153-5) - BSA Free

Product Information	
Unit Size	0.1 mg
Concentration	1 mg/ml
Storage	Store at 4C short term. Aliquot and store at -20C long term. Avoid freeze-thaw cycles.
Clonality	Monoclonal
Clone	S153-5
Preservative	0.1% Sodium Azide
Isotype	IgG2a
Purity	Protein G purified
Buffer	PBS (pH 7.4), 50% Glycerol
Product Description	
Host	Mouse
Gene ID	9927
Gene Symbol	MFN2
Species	Human, Mouse, Rat
Reactivity Notes	Immunogen displays sequence identity for non-tested species: Mouse and Rat.
Specificity/Sensitivity	Approx 55% identity with Mitofusin-1. Detects approx 90kDa. No cross-reactivity against Mitofusin-1.
Immunogen	Fusion protein amino acids 370-600 (cytoplasmic N-terminus) of mouse Mitofusin-2. Rat: 97% identity (226/231 amino acids identical). Human: 92% identity (214/231 amino acids identical) ~55% identity with Mitofusin-1.
Product Application Details	
Applications	Western Blot, Immunocytochemistry/ Immunofluorescence, Immunohistochemistry
Recommended Dilutions	Western Blot 1:1000, Immunohistochemistry, Immunocytochemistry/ Immunofluorescence 1:100
Application Notes	1 ug/ml of Mitofusin 2 Antibody was sufficient for detection of Mitofusin-2 in 20 ug of mouse cardiac mitochondrial lysate by colorimetric immunoblot analysis using Goat anti-mouse IgG:HRP as the secondary Antibody.

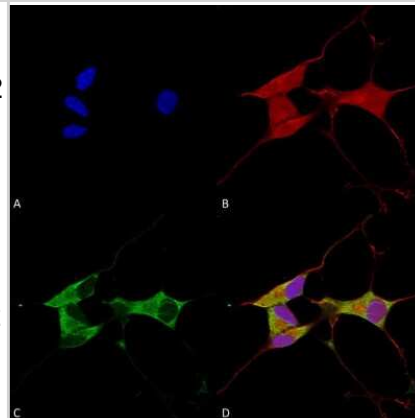


Images

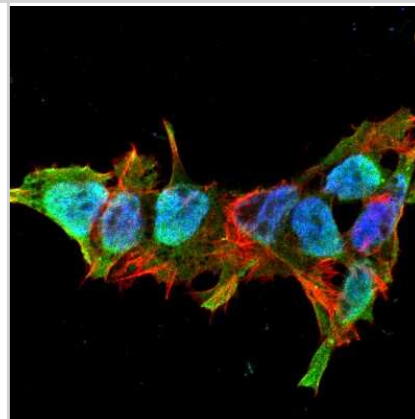
Western Blot: Mitofusin 2 Antibody (S153-5) [NBP2-42188] - Western Blot analysis of Rat Brain Membrane showing detection of ~90 kDa Mitofusin 2 protein using Mouse Anti-Mitofusin 2 Monoclonal Antibody, Clone S153-5 (NBP2-42188). Lane 1: Molecular Weight Ladder. Lane 2: Rat Brain Membrane. Load: 15 ug. Block: 2% BSA and 2% Skim Milk in 1X TBST. Primary Antibody: Mouse Anti-Mitofusin 2 Monoclonal Antibody (NBP2-42188) at 1:200 for 16 hours at 4C. Secondary Antibody: Goat Anti-Mouse IgG: HRP at 1:1000 for 1 hour RT. Color Development: ECL solution for 6 min in RT. Predicted/Observed Size: ~90 kDa.



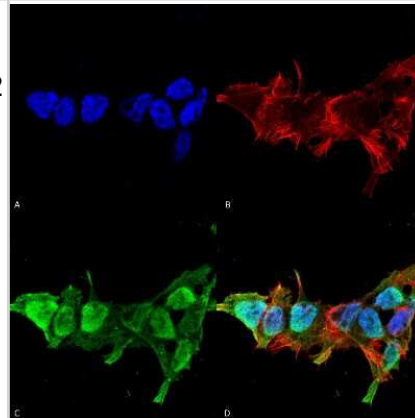
Immunocytochemistry/Immunofluorescence: Mitofusin 2 Antibody (S153-5) [NBP2-42188] - Immunocytochemistry/Immunofluorescence analysis using Mouse Anti-Mitofusin 2 Monoclonal Antibody, Clone S153-5 (NBP2-42188). Tissue: Neuroblastoma cells (SH-SY5Y). Species: Human. Fixation: 4% PFA for 15 min. Primary Antibody: Mouse Anti-Mitofusin 2 Monoclonal Antibody (NBP2-42188) at 1:100 for overnight at 4C with slow rocking. Secondary Antibody: AlexaFluor 488 at 1:1000 for 1 hour at RT. Counterstain: Phalloidin-iFluor 647 (red) F-Actin stain; Hoechst (blue) nuclear stain at 1:800, 1.6mM for 20 min at RT. (A) Hoechst (blue) nuclear stain. (B) Phalloidin-iFluor 647 (red) F-Actin stain. (C) Mitofusin 2 Antibody (D) Composite.



Immunocytochemistry/Immunofluorescence: Mitofusin 2 Antibody (S153-5) [NBP2-42188] - Tissue: Neuroblastoma cell line SK-N-BE. Species: Human. Fixation: 4% Formaldehyde for 15 min at RT. Primary Antibody: Mouse Anti-Mitofusin 2 Monoclonal Antibody at 1:100 for 60 min at RT. Secondary Antibody: Goat Anti-Mouse ATTO 488 at 1:100 for 60 min at RT. Counterstain: Phalloidin Texas Red F-Actin stain; DAPI (blue) nuclear stain at 1:1000; 1:5000 for 60 min RT, 5 min RT. Localization: Cytoplasm, Nucleus. Magnification: 60X.



Immunocytochemistry/Immunofluorescence: Mitofusin 2 Antibody (S153-5) [NBP2-42188] - Immunocytochemistry/Immunofluorescence analysis using Mouse Anti-Mitofusin 2 Monoclonal Antibody, Clone S153-5 (NBP2-42188). Tissue: Neuroblastoma cell line (SK-N-BE). Species: Human. Fixation: 4% Formaldehyde for 15 min at RT. Primary Antibody: Mouse Anti-Mitofusin 2 Monoclonal Antibody (NBP2-42188) at 1:100 for 60 min at RT. Secondary Antibody: Goat Anti-Mouse ATTO 488 at 1:100 for 60 min at RT. Counterstain: Phalloidin Texas Red F-Actin stain; DAPI (blue) nuclear stain at 1:1000; 1:5000 for 60 min RT, 5 min RT. Localization: Cytoplasm, Nucleus. Magnification: 60X. (A) DAPI (blue) nuclear stain. (B) Phalloidin Texas Red F-Actin stain. (C) Mitofusin 2 Antibody. (D) Composite.





Novus Biologicals USA

10730 E. Briarwood Avenue
Centennial, CO 80112
USA
Phone: 303.730.1950
Toll Free: 1.888.506.6887
Fax: 303.730.1966
nb-customerservice@bio-techne.com

Bio-Techne Canada

21 Canmotor Ave
Toronto, ON M8Z 4E6
Canada
Phone: 905.827.6400
Toll Free: 855.668.8722
Fax: 905.827.6402
canada.inquires@bio-techne.com

Bio-Techne Ltd

19 Barton Lane
Abingdon Science Park
Abingdon, OX14 3NB, United Kingdom
Phone: (44) (0) 1235 529449
Free Phone: 0800 37 34 15
Fax: (44) (0) 1235 533420
info.EMEA@bio-techne.com

General Contact Information

www.novusbio.com
Technical Support: nb-technical@bio-techne.com
Orders: nb-customerservice@bio-techne.com
General: novus@novusbio.com

Products Related to NBP2-42188

HAF007	Goat anti-Mouse IgG Secondary Antibody [HRP]
NB720-B	Rabbit anti-Mouse IgG (H+L) Secondary Antibody [Biotin]
NBP1-96778	Mouse IgG2a Isotype Control (M2A)
H00009927-Q01-10ug	Recombinant Human Mitofusin 2 GST (N-Term) Protein

Limitations

This product is for research use only and is not approved for use in humans or in clinical diagnosis. Primary Antibodies are guaranteed for 1 year from date of receipt.

For more information on our 100% guarantee, please visit www.novusbio.com/guarantee

Earn gift cards/discounts by submitting a review: www.novusbio.com/reviews/submit/NBP2-42188

Earn gift cards/discounts by submitting a publication using this product:
www.novusbio.com/publications

