

# Product Datasheet

## FGF-13 Antibody (S235-22) - Pan Specific - BSA Free NBP2-42178

Unit Size: 0.1 mg

Store at 4C short term. Aliquot and store at -20C long term. Avoid freeze-thaw cycles.

[www.novusbio.com](http://www.novusbio.com)



[technical@novusbio.com](mailto:technical@novusbio.com)

Protocols, Publications, Related Products, Reviews, Research Tools and Images at:  
[www.novusbio.com/NBP2-42178](http://www.novusbio.com/NBP2-42178)

Updated 2/23/2025 v.20.1

Earn rewards for product  
reviews and publications.

Submit a publication at [www.novusbio.com/publications](http://www.novusbio.com/publications)

Submit a review at [www.novusbio.com/reviews/destination/NBP2-42178](http://www.novusbio.com/reviews/destination/NBP2-42178)



**NBP2-42178**

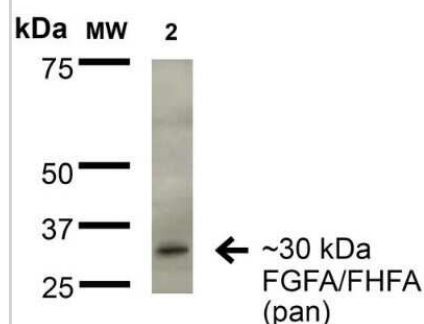
FGF-13 Antibody (S235-22) - Pan Specific - BSA Free

Product Information	
Unit Size	0.1 mg
Concentration	1 mg/ml
Storage	Store at 4C short term. Aliquot and store at -20C long term. Avoid freeze-thaw cycles.
Clonality	Monoclonal
Clone	S235-22
Preservative	0.1% Sodium Azide
Isotype	IgG2b
Purity	Protein G purified
Buffer	PBS (pH 7.4), 50% Glycerol
Product Description	
Host	Mouse
Gene ID	2258
Gene Symbol	FGF13
Species	Human, Mouse, Rat
Reactivity Notes	Immunogen displays sequence identity for non-tested species: Mouse and Rat.
Specificity/Sensitivity	Greater than 80% identity with FGF12A/FHF1A, FGF14A/FHF4A and FGF11A/FHF3A. Detects approx 30kDa. Does not cross-react with FGF13B/FHF2B. Cross reacts with FGF12A/FHF1A and FGF14A/FHF4A.
Immunogen	Synthetic peptide amino acids 2-18 (AAAIASSLIRQKRQARE) of human FHF2A. 100% identical to rat, 94% identical to mouse. >80% identity with FGF12A/FHF1A, FGF14A/FHF4A and FGF11A/FHF3A.
Product Application Details	
Applications	Western Blot, Immunocytochemistry/ Immunofluorescence, Immunohistochemistry
Recommended Dilutions	Western Blot 1:1000, Immunohistochemistry, Immunocytochemistry/ Immunofluorescence
Application Notes	1 ug/ml of FGFA/FHFA (pan) Antibody was sufficient for detection of FGFA/FHFA (pan) in 20 ug of rat brain lysate by colorimetric immunoblot analysis using Goat anti-mouse IgG:HRP as the secondary Antibody.

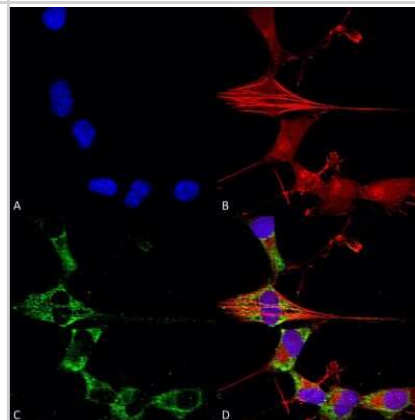


## Images

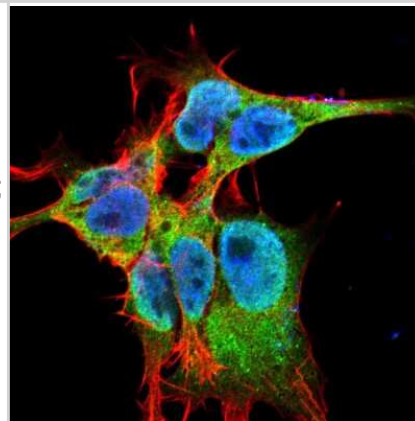
Western Blot: FGF-13 Antibody (S235-22) - Pan Specific [NBP2-42178] - Western Blot analysis of Rat Brain Membrane showing detection of ~30 kDa FGF-13 (pan) protein using Mouse Anti-FGF-13 (pan) Monoclonal Antibody, Clone S235-22 (NBP2-42178). Lane 1: Molecular Weight Ladder. Lane 2: Rat Brain Membrane. Load: 15 ug. Block: 2% BSA and 2% Skim Milk in 1X TBST. Primary Antibody: Mouse Anti-FGF-13 (pan) Monoclonal Antibody (NBP2-42178) at 1:200 for 16 hours at 4C. Secondary Antibody: Goat Anti-Mouse IgG: HRP at 1:1000 for 1 hour RT. Color Development: ECL solution for 6 min in RT. Predicted/Observed Size: ~30 kDa.



Immunocytochemistry/Immunofluorescence: FGF-13 Antibody (S235-22) - Pan Specific [NBP2-42178] - Immunocytochemistry/Immunofluorescence analysis using Mouse Anti-FGFA/FHFA (pan) Monoclonal Antibody, Clone S235-22 (NBP2-42178). Tissue: Neuroblastoma cells (SH-SY5Y). Species: Human. Fixation: 4% PFA for 15 min. Primary Antibody: Mouse Anti-FGFA/FHFA (pan) Monoclonal Antibody (NBP2-42178) at 1:50 for overnight at 4C with slow rocking. Secondary Antibody: AlexaFluor 488 at 1:1000 for 1 hour at RT. Counterstain: Phalloidin-iFluor 647 (red) F-Actin stain; Hoechst (blue) nuclear stain at 1:800, 1.6mM for 20 min at RT. (A) Hoechst (blue) nuclear stain. (B) Phalloidin-iFluor 647 (red) F-Actin stain. (C) FGFA/FHFA (pan) Antibody (D) Composite.



Immunocytochemistry/Immunofluorescence: FGF-13 Antibody (S235-22) - Pan Specific [NBP2-42178] - Tissue: Neuroblastoma cell line SK-N-BE. Species: Human. Fixation: 4% Formaldehyde for 15 min at RT. Primary Antibody: Mouse Anti-FGFA/FHFA (pan) Monoclonal Antibody at 1:100 for 60 min at RT. Secondary Antibody: Goat Anti-Mouse ATTO 488 at 1:100 for 60 min at RT. Counterstain: Phalloidin Texas Red F-Actin stain; DAPI (blue) nuclear stain at 1:1000; 1:5000 for 60 min RT, 5 min RT. Localization: Cell Projection, Nucleus, Cytoplasm. Magnification: 60X.





### **Novus Biologicals USA**

10730 E. Briarwood Avenue  
Centennial, CO 80112  
USA  
Phone: 303.730.1950  
Toll Free: 1.888.506.6887  
Fax: 303.730.1966  
nb-customerservice@bio-techne.com

### **Bio-Techne Canada**

21 Canmotor Ave  
Toronto, ON M8Z 4E6  
Canada  
Phone: 905.827.6400  
Toll Free: 855.668.8722  
Fax: 905.827.6402  
canada.inquires@bio-techne.com

### **Bio-Techne Ltd**

19 Barton Lane  
Abingdon Science Park  
Abingdon, OX14 3NB, United Kingdom  
Phone: (44) (0) 1235 529449  
Free Phone: 0800 37 34 15  
Fax: (44) (0) 1235 533420  
info.EMEA@bio-techne.com

### **General Contact Information**

www.novusbio.com  
Technical Support: nb-technical@bio-techne.com  
Orders: nb-customerservice@bio-techne.com  
General: novus@novusbio.com

### **Products Related to NBP2-42178**

---

HAF007	Goat anti-Mouse IgG Secondary Antibody [HRP]
NB720-B	Rabbit anti-Mouse IgG (H+L) Secondary Antibody [Biotin]
NBP2-27231	Mouse IgG2b Isotype Control (MPC-11)
NBP2-35009-5ug	Recombinant Human FGF-13 Protein

---

### **Limitations**

This product is for research use only and is not approved for use in humans or in clinical diagnosis. Primary Antibodies are guaranteed for 1 year from date of receipt.

For more information on our 100% guarantee, please visit [www.novusbio.com/guarantee](http://www.novusbio.com/guarantee)

Earn gift cards/discounts by submitting a review: [www.novusbio.com/reviews/submit/NBP2-42178](http://www.novusbio.com/reviews/submit/NBP2-42178)

Earn gift cards/discounts by submitting a publication using this product:  
[www.novusbio.com/publications](http://www.novusbio.com/publications)

