

Product Datasheet

CCL2/MCP1 Antibody - BSA Free NBP2-41209

Unit Size: 0.1 mg

Store at 4C short term. Aliquot and store at -20C long term. Avoid freeze-thaw cycles.

www.novusbio.com



technical@novusbio.com

Publications: 1

Protocols, Publications, Related Products, Reviews, Research Tools and Images at:
www.novusbio.com/NBP2-41209

Updated 10/23/2024 v.20.1

Earn rewards for product
reviews and publications.

Submit a publication at www.novusbio.com/publications

Submit a review at www.novusbio.com/reviews/destination/NBP2-41209



NBP2-41209

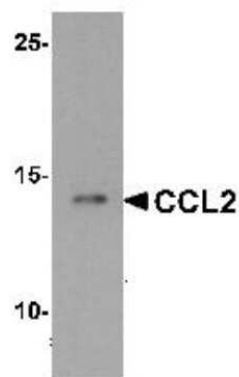
CCL2/MCP1 Antibody - BSA Free

Product Information	
Unit Size	0.1 mg
Concentration	1 mg/ml
Storage	Store at 4C short term. Aliquot and store at -20C long term. Avoid freeze-thaw cycles.
Clonality	Polyclonal
Preservative	0.02% Sodium Azide
Isotype	IgG
Purity	Peptide affinity purified
Buffer	PBS
Target Molecular Weight	14 kDa
Product Description	
Host	Rabbit
Gene ID	6347
Gene Symbol	CCL2
Species	Human, Mouse, Rat
Reactivity Notes	Immunogen displays the following percentage of sequence identity for non-tested species: Pig (81%), Horse (81%)
Immunogen	Antibody was raised against a 17 amino acid peptide near the carboxy terminus of human CCL2. The immunogen is located within the last 50 amino acids of CCL2. Amino Acid Sequence: ADPKQKWVQDSMDHLD
Product Application Details	
Applications	Western Blot, ELISA, Immunocytochemistry/ Immunofluorescence, Immunohistochemistry, Immunohistochemistry-Paraffin
Recommended Dilutions	Western Blot 1 - 2 ug/mL, ELISA, Immunohistochemistry, Immunocytochemistry/ Immunofluorescence 20 ug/ml, Immunohistochemistry-Paraffin 5 ug/ml

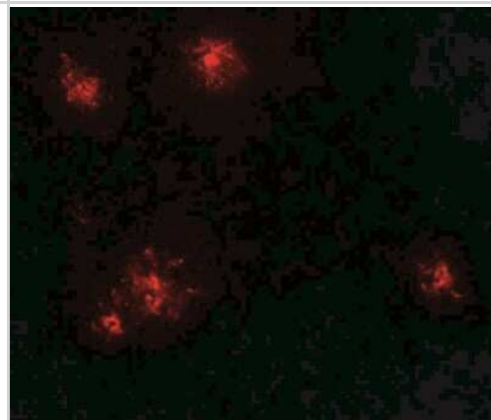


Images

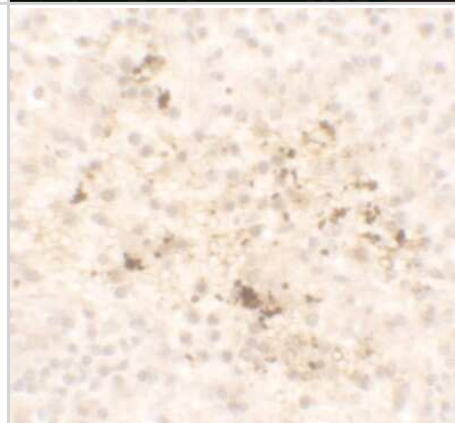
Western Blot: CCL2/MCP1 Antibody [NBP2-41209] - Analysis of CCL2 in K562 cell lysate with CCL2 antibody at 1 ug/mL.



Immunocytochemistry/Immunofluorescence: CCL2/MCP1 Antibody [NBP2-41209] - Human spleen tissue with CCL2 antibody at 20 ug/ml.



Immunohistochemistry-Paraffin: CCL2/MCP1 Antibody [NBP2-41209] - Human spleen tissue with CCL2 antibody at 5 ug/ml.



Publications

Ziegler-Waldkirch S, Friesen M, Loreth D et al. Seed-induced A beta deposition alters neuronal function and impairs olfaction in a mouse model of Alzheimer's disease Molecular psychiatry 2022-07-22 [PMID: 35869271] (WB, Mouse)

Details:

1:1000 dilution, Brain homogenates from olfactory bulb



Novus Biologicals USA

10730 E. Briarwood Avenue
Centennial, CO 80112
USA
Phone: 303.730.1950
Toll Free: 1.888.506.6887
Fax: 303.730.1966
nb-customerservice@bio-techne.com

Bio-Techne Canada

21 Canmotor Ave
Toronto, ON M8Z 4E6
Canada
Phone: 905.827.6400
Toll Free: 855.668.8722
Fax: 905.827.6402
canada.inquires@bio-techne.com

Bio-Techne Ltd

19 Barton Lane
Abingdon Science Park
Abingdon, OX14 3NB, United Kingdom
Phone: (44) (0) 1235 529449
Free Phone: 0800 37 34 15
Fax: (44) (0) 1235 533420
info.EMEA@bio-techne.com

General Contact Information

www.novusbio.com
Technical Support: nb-technical@bio-techne.com
Orders: nb-customerservice@bio-techne.com
General: novus@novusbio.com

Products Related to NBP2-41209

HAF008	Goat anti-Rabbit IgG Secondary Antibody [HRP]
NB7160	Goat anti-Rabbit IgG (H+L) Secondary Antibody [HRP]
NBP2-24891	Rabbit IgG Isotype Control
NBP2-34957-5ug	Recombinant Human CCL2/MCP1 Protein

Limitations

This product is for research use only and is not approved for use in humans or in clinical diagnosis. Primary Antibodies are guaranteed for 1 year from date of receipt.

For more information on our 100% guarantee, please visit www.novusbio.com/guarantee

Earn gift cards/discounts by submitting a review: www.novusbio.com/reviews/submit/NBP2-41209

Earn gift cards/discounts by submitting a publication using this product:
www.novusbio.com/publications

