

# Product Datasheet

## Siglec-15 Antibody [mFluor Violet 610 SE] NBP2-41162MFV610

Unit Size: 0.1 ml

Store at 4C in the dark.

[www.novusbio.com](http://www.novusbio.com)



[technical@novusbio.com](mailto:technical@novusbio.com)

Protocols, Publications, Related Products, Reviews, Research Tools and Images at:  
[www.novusbio.com/NBP2-41162MFV610](http://www.novusbio.com/NBP2-41162MFV610)

Updated 9/20/2023 v.20.1

Earn rewards for product  
reviews and publications.

Submit a publication at [www.novusbio.com/publications](http://www.novusbio.com/publications)

Submit a review at [www.novusbio.com/reviews/destination/NBP2-41162MFV610](http://www.novusbio.com/reviews/destination/NBP2-41162MFV610)



**NBP2-41162MFV610**

Siglec-15 Antibody [mFluor Violet 610 SE]

**Product Information**

|                      |   |
|----------------------|---|
| <b>Unit Size</b>     | 0.1 ml  |
| <b>Concentration</b> | Please see the vial label for concentration. If unlisted please contact technical services. |
| <b>Storage</b>       | Store at 4C in the dark.  |
| <b>Clonality</b>     | Polyclonal  |
| <b>Preservative</b>  | 0.05% Sodium Azide  |
| <b>Isotype</b>       | IgG   |
| <b>Conjugate</b>     | mFluor Violet 610 SE  |
| <b>Purity</b>        | Peptide affinity purified   |
| <b>Buffer</b>        | 50mM Sodium Borate  |

**Product Description**

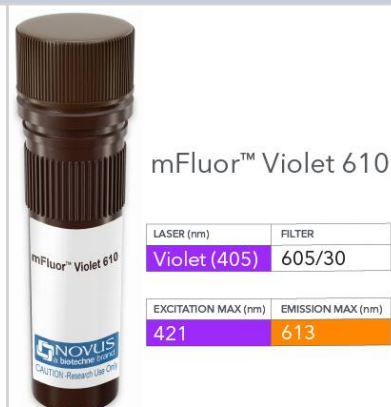
|                                |  |
|--------------------------------|--|
| <b>Host</b>                    | Rabbit   |
| <b>Gene ID</b>                 | 284266   |
| <b>Gene Symbol</b>             | SIGLEC15   |
| <b>Species</b>                 | Human, Mouse, Rat  |
| <b>Specificity/Sensitivity</b> | SIGLEC15 antibody is predicted to not cross-react with other SIGLEC family members.  |
| <b>Immunogen</b>               | Antibody was raised against a 15 amino acid synthetic peptide near the amino terminus of human SIGLEC15. The immunogen is located within amino acids 50 - 100 of SIGLEC15. Amino Acid Sequence: TFTHPHRHYDGPLT |

**Product Application Details**

|                              |  |
|------------------------------|--|
| <b>Applications</b>          | Western Blot, ELISA, Flow Cytometry, Immunohistochemistry, Immunohistochemistry-Paraffin |
| <b>Recommended Dilutions</b> | Western Blot, Flow Cytometry, ELISA, Immunohistochemistry, Immunohistochemistry-Paraffin |
| <b>Application Notes</b>     | Optimal dilution of this antibody should be experimentally determined.                   |

**Images**

Siglec-15 Antibody [mFluor Violet 610 SE] [NBP2-41162MFV610] - Vial of mFluor Violet 610 conjugated antibody. mFluor Violet 610 is optimally excited at 421 nm by the Violet laser (405 nm) and has an emission maximum of 613 nm.





### **Novus Biologicals USA**

10730 E. Briarwood Avenue  
Centennial, CO 80112  
USA  
Phone: 303.730.1950  
Toll Free: 1.888.506.6887  
Fax: 303.730.1966  
novus@novusbio.com

### **Bio-Techne Canada**

21 Canmotor Ave  
Toronto, ON M8Z 4E6  
Canada  
Phone: 905.827.6400  
Toll Free: 855.668.8722  
Fax: 905.827.6402  
canada.inquires@bio-techne.com

### **Bio-Techne Ltd**

19 Barton Lane  
Abingdon Science Park  
Abingdon, OX14 3NB, United Kingdom  
Phone: (44) (0) 1235 529449  
Free Phone: 0800 37 34 15  
Fax: (44) (0) 1235 533420  
info.EMEA@bio-techne.com

### **General Contact Information**

www.novusbio.com  
Technical Support: technical@novusbio.com  
Orders: orders@novusbio.com  
General: novus@novusbio.com

### **Products Related to NBP2-41162MFV610**

---

|              |                          |
|--------------|--------------------------|
| 210-TA-005   | TNF-alpha [Unconjugated] |
| 10101-SL-050 | Siglec-15 [Unconjugated] |
| 202-IL-010   | IL-2 [Unconjugated]      |
| DC140        | CD14 [HRP]               |

---

### **Limitations**

This product is for research use only and is not approved for use in humans or in clinical diagnosis. Primary Antibodies are guaranteed for 1 year from date of receipt.

For more information on our 100% guarantee, please visit [www.novusbio.com/guarantee](http://www.novusbio.com/guarantee)

Earn gift cards/discounts by submitting a review: [www.novusbio.com/reviews/submit/NBP2-41162MFV610](http://www.novusbio.com/reviews/submit/NBP2-41162MFV610)

Earn gift cards/discounts by submitting a publication using this product:  
[www.novusbio.com/publications](http://www.novusbio.com/publications)

