

Product Datasheet

Emx1 Antibody - BSA Free NBP2-41151

Unit Size: 0.1 mg

Store at 4C short term. Aliquot and store at -20C long term. Avoid freeze-thaw cycles.

www.novusbio.com



technical@novusbio.com

Protocols, Publications, Related Products, Reviews, Research Tools and Images at:
www.novusbio.com/NBP2-41151

Updated 10/23/2024 v.20.1

Earn rewards for product
reviews and publications.

Submit a publication at www.novusbio.com/publications

Submit a review at www.novusbio.com/reviews/destination/NBP2-41151



NBP2-41151

Emx1 Antibody - BSA Free

Product Information

Unit Size	0.1 mg
Concentration	1 mg/ml
Storage	Store at 4C short term. Aliquot and store at -20C long term. Avoid freeze-thaw cycles.
Clonality	Polyclonal
Preservative	0.02% Sodium Azide
Isotype	IgY
Purity	Peptide affinity purified
Buffer	PBS

Product Description

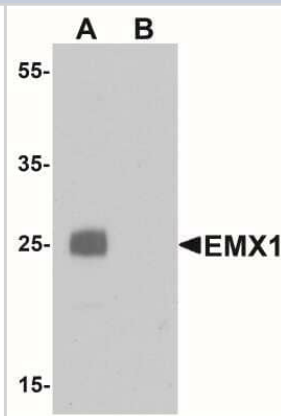
Host	Chicken
Gene ID	2016
Gene Symbol	EMX1
Species	Human, Mouse, Rat
Specificity/Sensitivity	At least two isoforms of EMX1 are known to exist; this antibody will detect the longer isoform. EMX1 antibody is predicted to not cross-react with other EMX family members.
Immunogen	Antibody was raised against a 16 amino acid synthetic peptide near the amino terminus of human EMX1. The immunogen is located within amino acids 50 - 100 of EMX1. Amino Acid Sequence: CAAAASEEPLRPTALN
Notes	Chicken products cannot be exported to Canada.

Product Application Details

Applications	Western Blot, ELISA
Recommended Dilutions	Western Blot 1 ug/ml, ELISA

Images

Western Blot: Emx1 Antibody [NBP2-41151] - Western blot analysis of EMX1 in rat liver tissue lysate with EMX1 antibody at 1 ug/mL in (A) the absence and (B) the presence of blocking peptide.





Novus Biologicals USA

10730 E. Briarwood Avenue
Centennial, CO 80112
USA
Phone: 303.730.1950
Toll Free: 1.888.506.6887
Fax: 303.730.1966
nb-customerservice@bio-techne.com

Bio-Techne Canada

21 Canmotor Ave
Toronto, ON M8Z 4E6
Canada
Phone: 905.827.6400
Toll Free: 855.668.8722
Fax: 905.827.6402
canada.inquires@bio-techne.com

Bio-Techne Ltd

19 Barton Lane
Abingdon Science Park
Abingdon, OX14 3NB, United Kingdom
Phone: (44) (0) 1235 529449
Free Phone: 0800 37 34 15
Fax: (44) (0) 1235 533420
info.EMEA@bio-techne.com

General Contact Information

www.novusbio.com
Technical Support: nb-technical@bio-techne.com
Orders: nb-customerservice@bio-techne.com
General: novus@novusbio.com

Products Related to NBP2-41151

BAF010	Goat anti-Chicken IgY Secondary Antibody [Biotin]
NB7276	Goat anti-Chicken IgM Heavy Chain Secondary Antibody
NBP2-58883PEP	Emx1 Recombinant Protein Antigen
233-FB-025	FGF basic/FGF2/bFGF [Unconjugated]

Limitations

This product is for research use only and is not approved for use in humans or in clinical diagnosis. Primary Antibodies are guaranteed for 1 year from date of receipt.

For more information on our 100% guarantee, please visit www.novusbio.com/guarantee

Earn gift cards/discounts by submitting a review: www.novusbio.com/reviews/submit/NBP2-41151

Earn gift cards/discounts by submitting a publication using this product:
www.novusbio.com/publications

