

Product Datasheet

IGF2BP1 Antibody - BSA Free

NBP2-38956

Unit Size: 0.1 ml

Store at 4C short term. Aliquot and store at -20C long term. Avoid freeze-thaw cycles.

www.novusbio.com



technical@novusbio.com

Protocols, Publications, Related Products, Reviews, Research Tools and Images at:
www.novusbio.com/NBP2-38956

Updated 4/13/2025 v.20.1

Earn rewards for product
reviews and publications.

Submit a publication at www.novusbio.com/publications

Submit a review at www.novusbio.com/reviews/destination/NBP2-38956



NBP2-38956

IGF2BP1 Antibody - BSA Free

Product Information

Unit Size	0.1 ml
Concentration	Concentrations vary lot to lot. See vial label for concentration. If unlisted please contact technical services.
Storage	Store at 4C short term. Aliquot and store at -20C long term. Avoid freeze-thaw cycles.
Clonality	Polyclonal
Preservative	0.02% Sodium Azide
Isotype	IgG
Purity	Immunogen affinity purified
Buffer	PBS (pH 7.2) and 40% Glycerol

Product Description

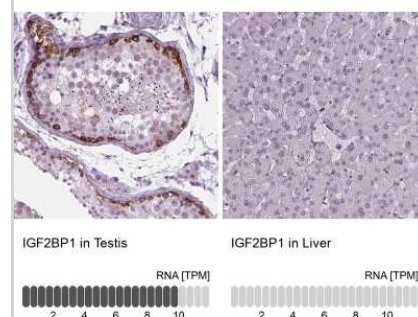
Host	Rabbit
Gene ID	10642
Gene Symbol	IGF2BP1
Species	Human
Immunogen	This antibody was developed against a recombinant protein corresponding to amino acids: HALKVSYIPDEQIAQGPENGRRGFGSRGQPRQGSPVAAGAPAKQQQVDI

Product Application Details

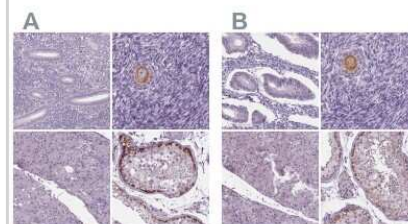
Applications	Western Blot, Simple Western, Immunohistochemistry, Immunohistochemistry-Paraffin
Recommended Dilutions	Western Blot 0.04-0.4 ug/ml, Simple Western 1:10, Immunohistochemistry 1:500 - 1:1000, Immunohistochemistry-Paraffin 1:500 - 1:1000
Application Notes	For IHC-Paraffin, HIER pH 6 retrieval is recommended. In Simple Western only 10-15 uL of the recommended dilution is used per data point. See Simple Western Antibody Database for Simple Western validation: Tested in HT-29 and HCT 116 lysates, separated by Size, antibody dilution of 1:1

Images

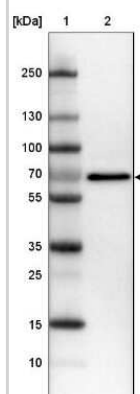
Immunohistochemistry-Paraffin: IGF2BP1 Antibody [NBP2-38956] - Staining in human testis and liver tissues using NBP2-38956 antibody. Corresponding IGF2BP1 RNA-seq data are presented for the same tissues.



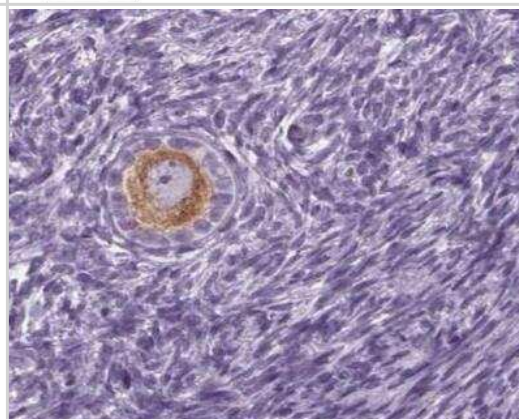
Immunohistochemistry-Paraffin: IGF2BP1 Antibody [NBP2-38956] - Staining of human endometrium, ovary, pancreas and testis using Anti-IGF2BP1 antibody NBP2-38956 (A) shows similar protein distribution across tissues to independent antibody NBP1-83108 (B).



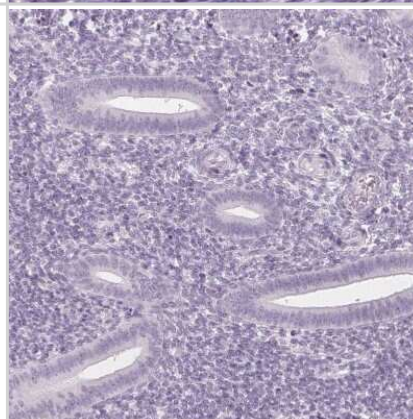
Western Blot: IGF2BP1 Antibody [NBP2-38956] - Lane 1: Marker [kDa] 250, 130, 100, 70, 55, 35, 25, 15, 10
Lane 2: Human cell line CACO-2



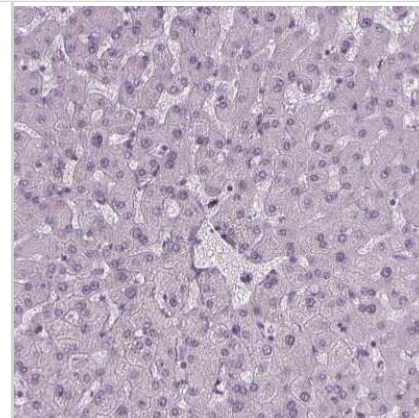
Immunohistochemistry-Paraffin: IGF2BP1 Antibody [NBP2-38956] - Staining of human ovary shows moderate cytoplasmic positivity in follicle cells.



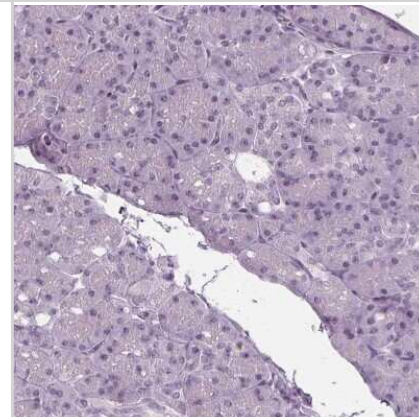
Immunohistochemistry-Paraffin: IGF2BP1 Antibody [NBP2-38956] - Staining of human endometrium shows no positivity in glandular cells as expected.



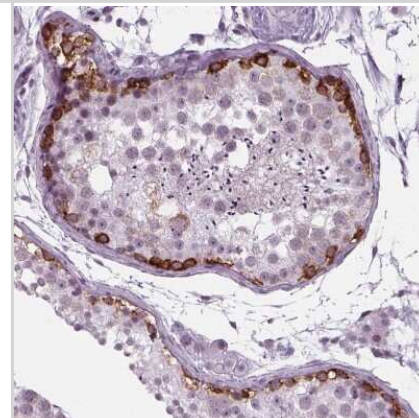
Immunohistochemistry-Paraffin: IGF2BP1 Antibody [NBP2-38956] - Staining of human liver shows no positivity in hepatocytes as expected.



Immunohistochemistry-Paraffin: IGF2BP1 Antibody [NBP2-38956] - Staining of human pancreas shows no positivity in exocrine glandular cells as expected.



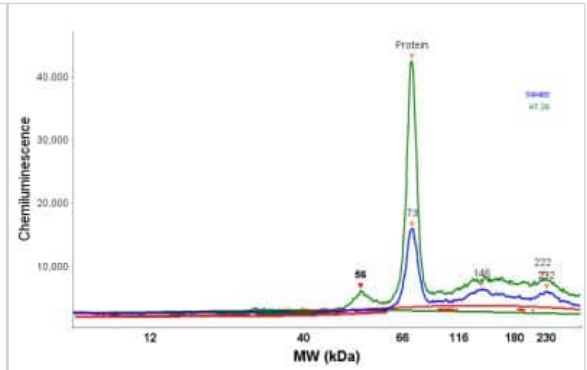
Immunohistochemistry-Paraffin: IGF2BP1 Antibody [NBP2-38956] - Staining of human testis shows strong cytoplasmic positivity in cells in seminiferous ducts.



Simple Western: IGF2BP1 Antibody [NBP2-38956] - Simple Western lane view shows a specific band for IGF2BP1 in 0.2 mg/ml of HT-29 (left) and HCT 116 (right) lysate(s). This experiment was performed under reducing conditions using the 12-230 kDa separation systems.



Simple Western: IGF2BP1 Antibody [NBP2-38956] - Electropherogram image of the corresponding Simple Western lane view. IGF2BP1 antibody was used at 1:10 dilution on HT-29 and HCT 116 lysate(s) respectively.





Novus Biologicals USA

10730 E. Briarwood Avenue
Centennial, CO 80112
USA
Phone: 303.730.1950
Toll Free: 1.888.506.6887
Fax: 303.730.1966
nb-customerservice@bio-techne.com

Bio-Techne Canada

21 Canmotor Ave
Toronto, ON M8Z 4E6
Canada
Phone: 905.827.6400
Toll Free: 855.668.8722
Fax: 905.827.6402
canada.inquires@bio-techne.com

Bio-Techne Ltd

19 Barton Lane
Abingdon Science Park
Abingdon, OX14 3NB, United Kingdom
Phone: (44) (0) 1235 529449
Free Phone: 0800 37 34 15
Fax: (44) (0) 1235 533420
info.EMEA@bio-techne.com

General Contact Information

www.novusbio.com
Technical Support: nb-technical@bio-techne.com
Orders: nb-customerservice@bio-techne.com
General: novus@novusbio.com

Products Related to NBP2-38956

NBP2-38956PEP	IGF2BP1 Recombinant Protein Antigen
HAF008	Goat anti-Rabbit IgG Secondary Antibody [HRP]
NB7160	Goat anti-Rabbit IgG (H+L) Secondary Antibody [HRP]
NBP2-24891	Rabbit IgG Isotype Control

Limitations

This product is for research use only and is not approved for use in humans or in clinical diagnosis. Primary Antibodies are guaranteed for 1 year from date of receipt.

For more information on our 100% guarantee, please visit www.novusbio.com/guarantee

Earn gift cards/discounts by submitting a review: www.novusbio.com/reviews/submit/NBP2-38956

Earn gift cards/discounts by submitting a publication using this product:
www.novusbio.com/publications

