

# Product Datasheet

## beta Tubulin Antibody (BT7R) [PerCP] NBP2-37830PCP

Unit Size: 0.1 ml

Store at 4C in the dark.

[www.novusbio.com](http://www.novusbio.com)



[technical@novusbio.com](mailto:technical@novusbio.com)

Protocols, Publications, Related Products, Reviews, Research Tools and Images at:  
[www.novusbio.com/NBP2-37830PCP](http://www.novusbio.com/NBP2-37830PCP)

Updated 10/23/2024 v.20.1

Earn rewards for product  
reviews and publications.

Submit a publication at [www.novusbio.com/publications](http://www.novusbio.com/publications)

Submit a review at [www.novusbio.com/reviews/destination/NBP2-37830PCP](http://www.novusbio.com/reviews/destination/NBP2-37830PCP)



**NBP2-37830PCP**

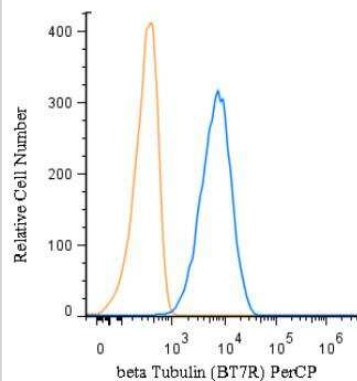
beta Tubulin Antibody (BT7R) [PerCP]

<b>Product Information</b>	
<b>Unit Size</b>	0.1 ml
<b>Concentration</b>	Concentrations vary lot to lot. See vial label for concentration. If unlisted please contact technical services.
<b>Storage</b>	Store at 4C in the dark.
<b>Clonality</b>	Monoclonal
<b>Clone</b>	BT7R
<b>Preservative</b>	0.05% Sodium Azide
<b>Isotype</b>	IgG2a
<b>Conjugate</b>	PerCP
<b>Purity</b>	Protein A purified
<b>Buffer</b>	PBS
<b>Product Description</b>	
<b>Host</b>	Mouse
<b>Gene ID</b>	203068
<b>Gene Symbol</b>	TUBB
<b>Species</b>	Human, Mouse, Rat, Avian, Chicken, Primate, Rabbit
<b>Reactivity Notes</b>	Please note that this antibody is reactive to Mouse and derived from the same host, Mouse. Additional Mouse on Mouse blocking steps may be required for IHC and ICC experiments. Please contact Technical Support for more information.
<b>Specificity/Sensitivity</b>	Detects beta-tubulin in human, monkey, mouse, rat, rabbit and chicken samples with ELISA, Western blot and immunofluorescence applications.
<b>Immunogen</b>	KLH conjugated peptide of the N-terminus of Beta-Tubulin.
<b>Product Application Details</b>	
<b>Applications</b>	Western Blot, ELISA, Flow Cytometry, Flow (Intracellular), Immunocytochemistry/ Immunofluorescence, Immunohistochemistry, Immunohistochemistry-Paraffin, CyTOF-ready
<b>Recommended Dilutions</b>	Western Blot, Flow Cytometry, ELISA, Immunohistochemistry, Immunocytochemistry/ Immunofluorescence, Immunohistochemistry-Paraffin, Flow (Intracellular), CyTOF-ready
<b>Application Notes</b>	Optimal dilution of this antibody should be experimentally determined.



## Images

Flow (Intracellular): beta Tubulin Antibody (BT7R) [PerCP] [NBP2-37830PCP] - An intracellular stain was performed on HeLa cells with beta Tubulin Antibody (BT7R) NBP2-37830PCP (blue) and a matched isotype control (orange). Cells were fixed with 4% PFA and then permeabilized with 0.1% saponin. Cells were incubated in an antibody dilution of 5 ug/mL for 30 minutes at room temperature. Both antibodies were conjugated to PerCP





### **Novus Biologicals USA**

10730 E. Briarwood Avenue  
Centennial, CO 80112  
USA  
Phone: 303.730.1950  
Toll Free: 1.888.506.6887  
Fax: 303.730.1966  
nb-customerservice@bio-techne.com

### **Bio-Techne Canada**

21 Canmotor Ave  
Toronto, ON M8Z 4E6  
Canada  
Phone: 905.827.6400  
Toll Free: 855.668.8722  
Fax: 905.827.6402  
canada.inquires@bio-techne.com

### **Bio-Techne Ltd**

19 Barton Lane  
Abingdon Science Park  
Abingdon, OX14 3NB, United Kingdom  
Phone: (44) (0) 1235 529449  
Free Phone: 0800 37 34 15  
Fax: (44) (0) 1235 533420  
info.EMEA@bio-techne.com

### **General Contact Information**

www.novusbio.com  
Technical Support: nb-technical@bio-techne.com  
Orders: nb-customerservice@bio-techne.com  
General: novus@novusbio.com

### **Products Related to NBP2-37830PCP**

---

NB600-936PEP	beta Tubulin Antibody Blocking Peptide
DIP100	CXCL10/IP-10/CRG-2 [HRP]
NB100-56459PEP	beta Tubulin Antibody Blocking Peptide
NB600-501	beta-Actin Antibody (AC-15)

---

### **Limitations**

This product is for research use only and is not approved for use in humans or in clinical diagnosis. Primary Antibodies are guaranteed for 1 year from date of receipt.

For more information on our 100% guarantee, please visit [www.novusbio.com/guarantee](http://www.novusbio.com/guarantee)

Earn gift cards/discounts by submitting a review: [www.novusbio.com/reviews/submit/NBP2-37830PCP](http://www.novusbio.com/reviews/submit/NBP2-37830PCP)

Earn gift cards/discounts by submitting a publication using this product:  
[www.novusbio.com/publications](http://www.novusbio.com/publications)

