

Product Datasheet

Chk1 [p Ser317] Antibody - BSA Free NBP2-37703

Unit Size: 100 ul

Store at 4C. Do not freeze.

www.novusbio.com



technical@novusbio.com

Protocols, Publications, Related Products, Reviews, Research Tools and Images at:
www.novusbio.com/NBP2-37703

Updated 2/23/2025 v.20.1

Earn rewards for product
reviews and publications.

Submit a publication at www.novusbio.com/publications

Submit a review at www.novusbio.com/reviews/destination/NBP2-37703



NBP2-37703

Chk1 [p Ser317] Antibody - BSA Free

Product Information	
Unit Size	100 ul
Concentration	1.0 mg/ml
Storage	Store at 4C. Do not freeze.
Clonality	Polyclonal
Preservative	0.09% Sodium Azide
Isotype	IgG
Purity	Immunogen affinity purified
Buffer	Tris-Citrate/Phosphate (pH 7.0 - 8.0)

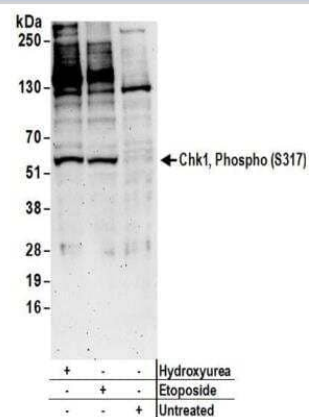
Product Description	
Host	Rabbit
Gene ID	1111
Gene Symbol	CHEK1
Species	Human
Immunogen	This antibody maps to a region between residue Immunogen for A304-673A was a phosphorylated synthetic peptide, which represented a portion of human Checkpoint Kinase 1 (GeneID 1111) around serine 317 according to the numbering given in entry NP_001265.1. of human Checkpoint Kinase 1 using the numbering given in entry NP_001265.1 (GeneID 1111).

Product Application Details	
Applications	Western Blot, Immunohistochemistry, Immunohistochemistry-Paraffin, Immunoprecipitation (Negative)
Recommended Dilutions	Western Blot 1:2000 - 1:10000, Immunohistochemistry, Immunohistochemistry-Paraffin 1:500-1:2000, Immunoprecipitation (Negative)
Application Notes	Epitope retrieval with citrate buffer pH6.0 is recommended for FFPE tissue sections.

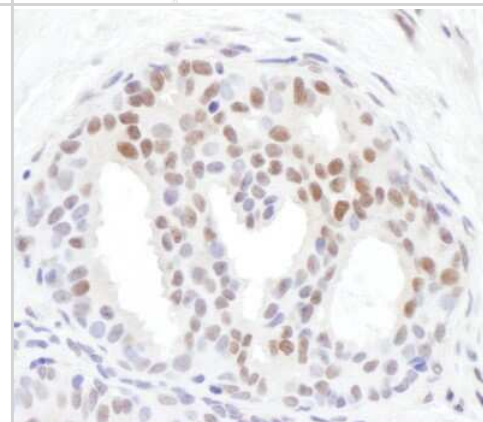


Images

Western Blot: Chk1 [p Ser317] Antibody [NBP2-37703] - Whole cell lysate (50 ug) from HeLa cells prepared using NETN lysis buffer treated with hydroxyurea (2mM for 24 hours), EPE (100uM for 4 hours), or untreated. Affinity purified rabbit anti-Chk1, Phospho (S317) antibody used for WB at 0.2 ug/ml. Detection: Chemiluminescence with an exposure time of 3 minutes.



Immunohistochemistry: Chk1 [p Ser317] Antibody [NBP2-37703] - Sample: FFPE section of human breast carcinoma. Antibody: Affinity purified rabbit anti- Chk1, Phospho (S317) used at a dilution of 1:1,000 (1ug/ml). Detection: DAB. Counterstain: IHC Hematoxylin (blue).





Novus Biologicals USA

10730 E. Briarwood Avenue
Centennial, CO 80112
USA
Phone: 303.730.1950
Toll Free: 1.888.506.6887
Fax: 303.730.1966
nb-customerservice@bio-techne.com

Bio-Techne Canada

21 Canmotor Ave
Toronto, ON M8Z 4E6
Canada
Phone: 905.827.6400
Toll Free: 855.668.8722
Fax: 905.827.6402
canada.inquires@bio-techne.com

Bio-Techne Ltd

19 Barton Lane
Abingdon Science Park
Abingdon, OX14 3NB, United Kingdom
Phone: (44) (0) 1235 529449
Free Phone: 0800 37 34 15
Fax: (44) (0) 1235 533420
info.EMEA@bio-techne.com

General Contact Information

www.novusbio.com
Technical Support: nb-technical@bio-techne.com
Orders: nb-customerservice@bio-techne.com
General: novus@novusbio.com

Products Related to NBP2-37703

HAF008	Goat anti-Rabbit IgG Secondary Antibody [HRP]
NB7160	Goat anti-Rabbit IgG (H+L) Secondary Antibody [HRP]
NBP2-24891	Rabbit IgG Isotype Control
NBP2-58441PEP	Chk1 Recombinant Protein Antigen

Limitations

This product is for research use only and is not approved for use in humans or in clinical diagnosis. Primary Antibodies are guaranteed for 1 year from date of receipt.

For more information on our 100% guarantee, please visit www.novusbio.com/guarantee

Earn gift cards/discounts by submitting a review: www.novusbio.com/reviews/submit/NBP2-37703

Earn gift cards/discounts by submitting a publication using this product:
www.novusbio.com/publications

