

Product Datasheet

Kelch-Like Family Member 21 Antibody (2H4) - BSA Free NBP2-37659

Unit Size: 0.1 ml

Store at 4C short term. Aliquot and store at -20C long term. Avoid freeze-thaw cycles.

www.novusbio.com



technical@novusbio.com

Protocols, Publications, Related Products, Reviews, Research Tools and Images at:
www.novusbio.com/NBP2-37659

Updated 10/23/2024 v.20.1

Earn rewards for product
reviews and publications.

Submit a publication at www.novusbio.com/publications

Submit a review at www.novusbio.com/reviews/destination/NBP2-37659



NBP2-37659

Kelch-Like Family Member 21 Antibody (2H4) - BSA Free

| Product Information | |
|-------------------------|----------------------------------------------------------------------------------------|
| Unit Size | 0.1 ml |
| Concentration | This product is unpurified. The exact concentration of antibody is not quantifiable. |
| Storage | Store at 4C short term. Aliquot and store at -20C long term. Avoid freeze-thaw cycles. |
| Clonality | Monoclonal |
| Clone | 2H4 |
| Preservative | 0.03% Sodium Azide |
| Isotype | IgG1 |
| Purity | Unpurified |
| Buffer | Ascites |
| Target Molecular Weight | 66 kDa |

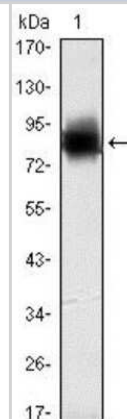
| Product Description | |
|---------------------|------------------------------------------------------------------------------------------|
| Host | Mouse |
| Gene ID | 9903 |
| Gene Symbol | KLHL21 |
| Species | Human |
| Immunogen | Purified recombinant fragment of human Kelch-Like Family Member 21 expressed in E. Coli. |

| Product Application Details | |
|-----------------------------|-----------------------------------------------------------------------------------------------------------------------------|
| Applications | Western Blot, ELISA, Immunohistochemistry, Immunohistochemistry-Paraffin |
| Recommended Dilutions | Western Blot 1:500 - 1:2000, ELISA 1:10000, Immunohistochemistry 1:200 - 1:1000, Immunohistochemistry-Paraffin 1:200-1:1000 |

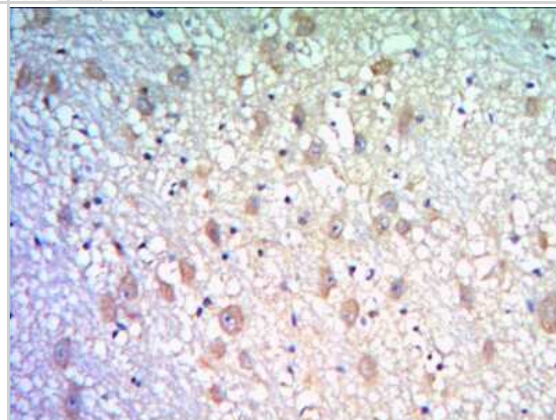


Images

Western Blot: Kelch-Like Family Member 21 Antibody (2H4) [NBP2-37659] - Western blot analysis using KLHL21 mAb against human KLHL21 (AA: 250-597) recombinant protein. (Expected MW is 64.4 kDa)



Immunohistochemistry: Kelch-Like Family Member 21 Antibody (2H4) [NBP2-37659] - Immunohistochemical analysis of paraffin-embedded human brain tissues using KLHL21 mouse mAb with DAB staining.





Novus Biologicals USA

10730 E. Briarwood Avenue
Centennial, CO 80112
USA
Phone: 303.730.1950
Toll Free: 1.888.506.6887
Fax: 303.730.1966
nb-customerservice@bio-techne.com

Bio-Techne Canada

21 Canmotor Ave
Toronto, ON M8Z 4E6
Canada
Phone: 905.827.6400
Toll Free: 855.668.8722
Fax: 905.827.6402
canada.inquires@bio-techne.com

Bio-Techne Ltd

19 Barton Lane
Abingdon Science Park
Abingdon, OX14 3NB, United Kingdom
Phone: (44) (0) 1235 529449
Free Phone: 0800 37 34 15
Fax: (44) (0) 1235 533420
info.EMEA@bio-techne.com

General Contact Information

www.novusbio.com
Technical Support: nb-technical@bio-techne.com
Orders: nb-customerservice@bio-techne.com
General: novus@novusbio.com

Products Related to NBP2-37659

| | |
|------------------|---------------------------------------------------------|
| HAF007 | Goat anti-Mouse IgG Secondary Antibody [HRP] |
| NB720-B | Rabbit anti-Mouse IgG (H+L) Secondary Antibody [Biotin] |
| NBP1-97005-0.5mg | Mouse IgG1 Isotype Control (MG1) |
| MAB42273 | CXCR7/RDC-1 Antibody (11G8) [Unconjugated] |

Limitations

This product is for research use only and is not approved for use in humans or in clinical diagnosis. Primary Antibodies are guaranteed for 1 year from date of receipt.

For more information on our 100% guarantee, please visit www.novusbio.com/guarantee

Earn gift cards/discounts by submitting a review: www.novusbio.com/reviews/submit/NBP2-37659

Earn gift cards/discounts by submitting a publication using this product:
www.novusbio.com/publications

