

# Product Datasheet

## ALCAM/CD166 Antibody (4H9A5) - BSA Free NBP2-37345

Unit Size: 0.1 ml

Store at 4C short term. Aliquot and store at -20C long term. Avoid freeze-thaw cycles.

[www.novusbio.com](http://www.novusbio.com)



[technical@novusbio.com](mailto:technical@novusbio.com)

Reviews: 1

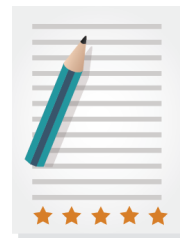
Protocols, Publications, Related Products, Reviews, Research Tools and Images at:  
[www.novusbio.com/NBP2-37345](http://www.novusbio.com/NBP2-37345)

Updated 10/23/2024 v.20.1

Earn rewards for product  
reviews and publications.

Submit a publication at [www.novusbio.com/publications](http://www.novusbio.com/publications)

Submit a review at [www.novusbio.com/reviews/destination/NBP2-37345](http://www.novusbio.com/reviews/destination/NBP2-37345)



**NBP2-37345**

ALCAM/CD166 Antibody (4H9A5) - BSA Free

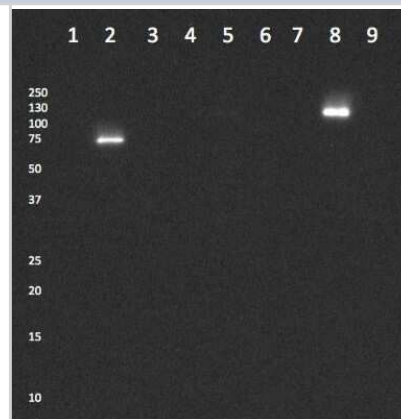
Product Information	
Unit Size	0.1 ml
Concentration	1 mg/ml
Storage	Store at 4C short term. Aliquot and store at -20C long term. Avoid freeze-thaw cycles.
Clonality	Monoclonal
Clone	4H9A5
Preservative	0.05% Sodium Azide
Isotype	IgG2b
Purity	Protein G purified
Buffer	PBS
Target Molecular Weight	65.1 kDa

Product Description	
Host	Mouse
Gene ID	214
Gene Symbol	ALCAM
Species	Human, Mouse
Reactivity Notes	Please note that this antibody is reactive to Mouse and derived from the same host, Mouse. Mouse-On-Mouse blocking reagent may be needed for IHC and ICC experiments to reduce high background signal. You can find these reagents under catalog numbers PK-2200-NB and MP-2400-NB. Please contact Technical Support if you have any questions.
Immunogen	Purified recombinant fragment of human ALCAM/CD166 (AA: 48-216) expressed in E. Coli.

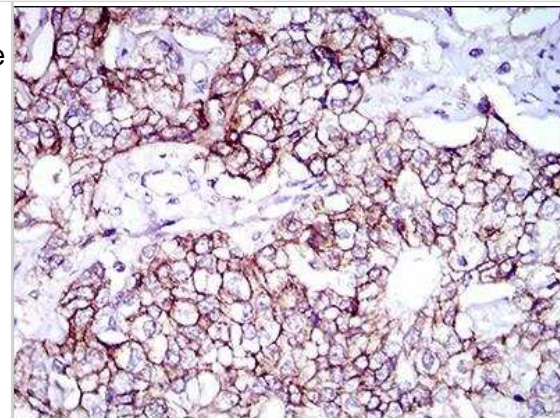
Product Application Details	
Applications	Western Blot, ELISA, Flow Cytometry, Immunohistochemistry, Immunohistochemistry-Paraffin, CyTOF-ready, Knockout Validated
Recommended Dilutions	Western Blot 1:500-1:2000, Flow Cytometry 1:200 - 1:400, ELISA 1:10000, Immunohistochemistry 1:200 - 1:1000, Immunohistochemistry-Paraffin 1:200-1:1000, CyTOF-ready, Knockout Validated
Application Notes	This antibody is Cytof ready.

**Images**

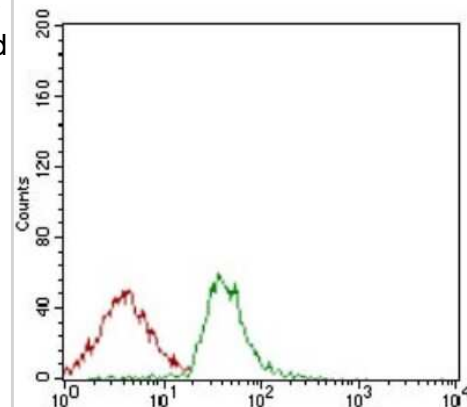
Western Blot: ALCAM/CD166 Antibody (4H9A5) [NBP2-37345] - Tested antibody against two HT1080 samples: One sample is an RFP control and the other is an ALCAM knockout. Whole cell lysate separated on 1D 12% PAGE gel under 3 conditions: 1. Denatured, deglycosylated, reduced; 2. Denatured; 3. Denatured, reduced. Loading order: 1. Protein Ladder 2. HT1080 ALCAM-RFP (Denatured, deglycosylated, reduced) 3. HT1080 ALCAM-KO (Denatured, deglycosylated, reduced) 4. Protein Ladder 5. HT1080 ALCAM-RFP (Denatured) 6. HT1080 ALCAM-KO (Denatured) 7. Protein Ladder 8. HT1080 ALCAM-RFP (Denatured, reduced) 9. HT1080 ALCAM-KO (Denatured, reduced). This image was submitted via customer Review.



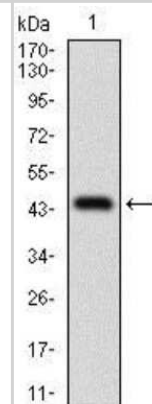
Immunohistochemistry-Paraffin: ALCAM/CD166 Antibody (4H9A5) [NBP2-37345] - Analysis of prostate cancer tissues using ALCAM mouse mAb with DAB staining.



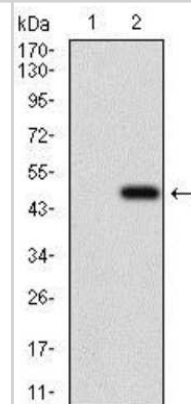
Flow Cytometry: ALCAM/CD166 Antibody (4H9A5) [NBP2-37345] - Flow cytometric analysis of Jurkat cells using ALCAM mouse mAb (green) and negative control (red).



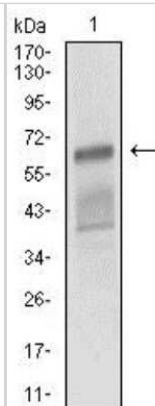
Western Blot: ALCAM/CD166 Antibody (4H9A5) [NBP2-37345] - Western blot analysis using ALCAM mAb against human ALCAM recombinant protein. (Expected MW is 44.9 kDa)



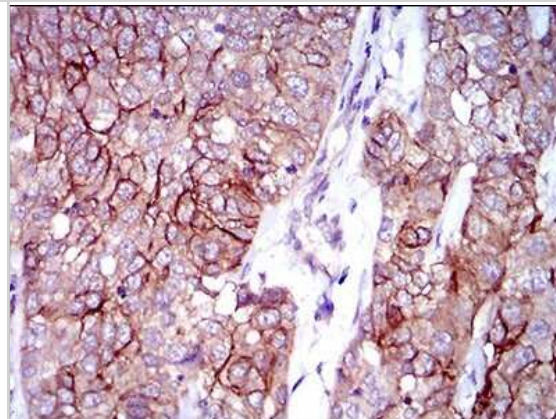
Western Blot: ALCAM/CD166 Antibody (4H9A5) [NBP2-37345] - Western blot analysis using ALCAM mAb against HEK293 (1) and ALCAM (AA: 48-216)-hlgGfc transfected HEK293 (2) cell lysate.



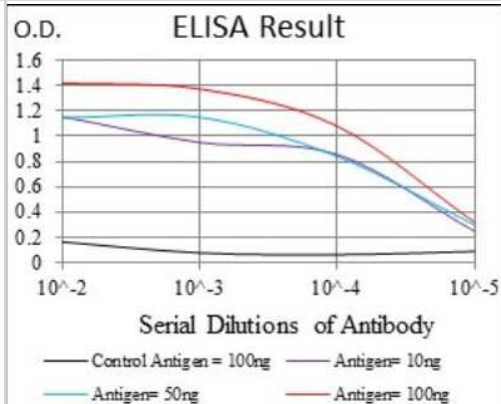
Western Blot: ALCAM/CD166 Antibody (4H9A5) [NBP2-37345] - Western blot analysis using ALCAM mouse mAb against NIH/3T3 cell lysate.



Immunohistochemistry-Paraffin: ALCAM/CD166 Antibody (4H9A5) [NBP2-37345] - Analysis of bladder cancer tissues using ALCAM mouse mAb with DAB staining.



ELISA: ALCAM/CD166 Antibody (4H9A5) [NBP2-37345] - Red: Control Antigen (100ng); Purple: Antigen (10ng); Green: Antigen (50ng); Blue: Antigen (100ng);





### **Novus Biologicals USA**

10730 E. Briarwood Avenue  
Centennial, CO 80112  
USA  
Phone: 303.730.1950  
Toll Free: 1.888.506.6887  
Fax: 303.730.1966  
nb-customerservice@bio-techne.com

### **Bio-Techne Canada**

21 Canmotor Ave  
Toronto, ON M8Z 4E6  
Canada  
Phone: 905.827.6400  
Toll Free: 855.668.8722  
Fax: 905.827.6402  
canada.inquires@bio-techne.com

### **Bio-Techne Ltd**

19 Barton Lane  
Abingdon Science Park  
Abingdon, OX14 3NB, United Kingdom  
Phone: (44) (0) 1235 529449  
Free Phone: 0800 37 34 15  
Fax: (44) (0) 1235 533420  
info.EMEA@bio-techne.com

### **General Contact Information**

www.novusbio.com  
Technical Support: nb-technical@bio-techne.com  
Orders: nb-customerservice@bio-techne.com  
General: novus@novusbio.com

### **Products Related to NBP2-37345**

---

HAF007	Goat anti-Mouse IgG Secondary Antibody [HRP]
NB720-B	Rabbit anti-Mouse IgG (H+L) Secondary Antibody [Biotin]
NBP2-27231	Mouse IgG2b Isotype Control (MPC-11)
NBP1-88129PEP	ALCAM/CD166 Recombinant Protein Antigen

---

### **Limitations**

This product is for research use only and is not approved for use in humans or in clinical diagnosis. Primary Antibodies are guaranteed for 1 year from date of receipt.

For more information on our 100% guarantee, please visit [www.novusbio.com/guarantee](http://www.novusbio.com/guarantee)

Earn gift cards/discounts by submitting a review: [www.novusbio.com/reviews/submit/NBP2-37345](http://www.novusbio.com/reviews/submit/NBP2-37345)

Earn gift cards/discounts by submitting a publication using this product:  
[www.novusbio.com/publications](http://www.novusbio.com/publications)

