

# Product Datasheet

## CS Citrate Synthase Antibody (CL2545) - BSA Free NBP2-36771

Unit Size: 0.1 ml

Store at 4C short term. Aliquot and store at -20C long term. Avoid freeze-thaw cycles.

[www.novusbio.com](http://www.novusbio.com)



[technical@novusbio.com](mailto:technical@novusbio.com)

Protocols, Publications, Related Products, Reviews, Research Tools and Images at:  
[www.novusbio.com/NBP2-36771](http://www.novusbio.com/NBP2-36771)

Updated 9/9/2025 v.20.1

Earn rewards for product  
reviews and publications.

Submit a publication at [www.novusbio.com/publications](http://www.novusbio.com/publications)

Submit a review at [www.novusbio.com/reviews/destination/NBP2-36771](http://www.novusbio.com/reviews/destination/NBP2-36771)



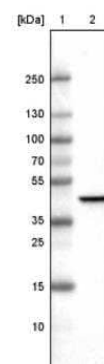
**NBP2-36771****CS Citrate Synthase Antibody (CL2545) - BSA Free**

<b>Product Information</b>	
<b>Unit Size</b>	0.1 ml
<b>Concentration</b>	Concentrations vary lot to lot. See vial label for concentration. If unlisted please contact technical services.
<b>Storage</b>	Store at 4C short term. Aliquot and store at -20C long term. Avoid freeze-thaw cycles.
<b>Clonality</b>	Monoclonal
<b>Clone</b>	CL2545
<b>Preservative</b>	0.02% Sodium Azide
<b>Isotype</b>	IgG1
<b>Purity</b>	Protein A purified
<b>Buffer</b>	PBS (pH 7.2) and 40% Glycerol
<b>Product Description</b>	
<b>Description</b>	Novus Biologicals Mouse CS Citrate Synthase Antibody (CL2545) - BSA Free (NBP2-36771) is a monoclonal antibody validated for use in IHC, WB and ICC/IF. All Novus Biologicals antibodies are covered by our 100% guarantee.
<b>Host</b>	Mouse
<b>Gene ID</b>	1431
<b>Gene Symbol</b>	CS
<b>Species</b>	Human
<b>Reactivity Notes</b>	Please note that this antibody is reactive to Mouse and derived from the same host, Mouse. Mouse-On-Mouse blocking reagent may be needed for IHC and ICC experiments to reduce high background signal. You can find these reagents under catalog numbers PK-2200-NB and MP-2400-NB. Please contact Technical Support if you have any questions
<b>Immunogen</b>	This antibody was developed using a recombinant protein derived from O75390, with the exact immunogen sequence remaining proprietary.
<b>Product Application Details</b>	
<b>Applications</b>	Western Blot, Immunohistochemistry-Paraffin, Immunocytochemistry/Immunofluorescence, Immunohistochemistry
<b>Recommended Dilutions</b>	Western Blot 1 ug/ml, Immunohistochemistry 1:2500 - 1:5000, Immunocytochemistry/ Immunofluorescence 2-10 ug/ml, Immunohistochemistry-Paraffin 1:2500 - 1:5000
<b>Application Notes</b>	For IHC-Paraffin, HIER pH 6 retrieval is recommended. ICC/IF, Fixation Permeabilization: Use PFA/Triton X-100.

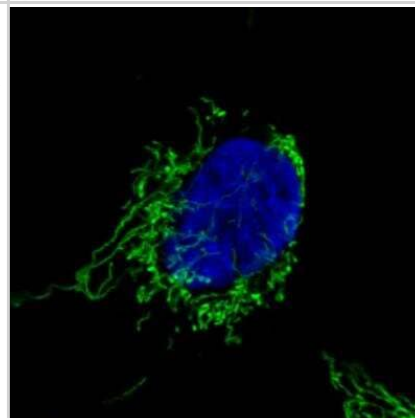


## Images

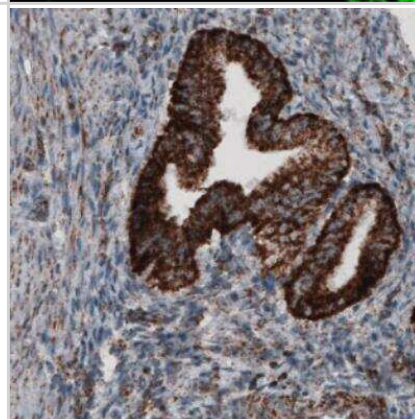
Western Blot: CS Citrate Synthase Antibody (CL2545) [NBP2-36771] -  
Lane 1: Marker [kDa]. Lane 2: Human cell line U-251 MG



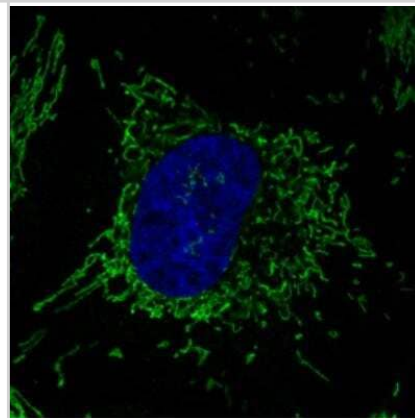
Immunocytochemistry/Immunofluorescence: CS Citrate Synthase Antibody (CL2545) [NBP2-36771] - Staining in U251 cell line showing specific mitochondrial staining in green. Microtubule-staining and nuclear probes are visualized in red and blue respectively (where available). Antibody staining is shown in green.



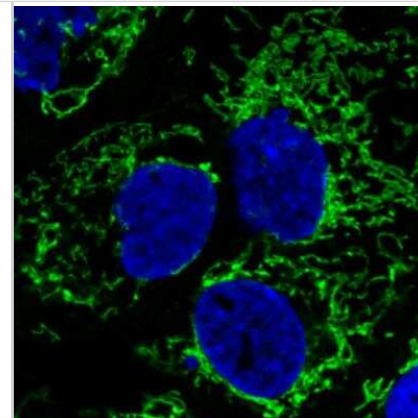
Immunohistochemistry-Paraffin: CS Citrate Synthase Antibody (CL2545) [NBP2-36771] - Staining of human endometrium shows strong granular cytoplasmic immunoreactivity in glandular cells.



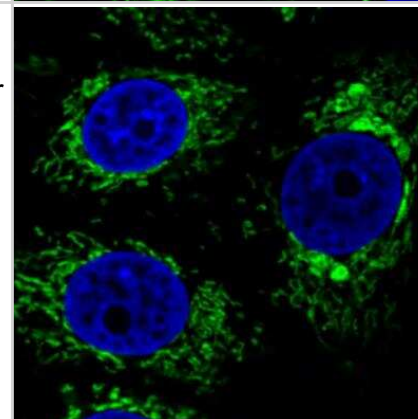
Immunocytochemistry/Immunofluorescence: CS Citrate Synthase Antibody (CL2545) [NBP2-36771] - Staining in HeLa cell line showing specific mitochondrial staining in green. Microtubule-staining and nuclear probes are visualized in red and blue respectively (where available). Antibody staining is shown in green.



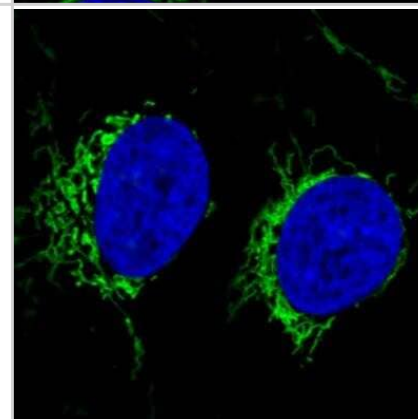
Immunocytochemistry/Immunofluorescence: CS Citrate Synthase Antibody (CL2545) [NBP2-36771] - Staining of human cell line A431 showing specific mitochondrial staining in green. Microtubule-staining and nuclear probes are visualized in red and blue respectively (where available). Antibody staining is shown in green.



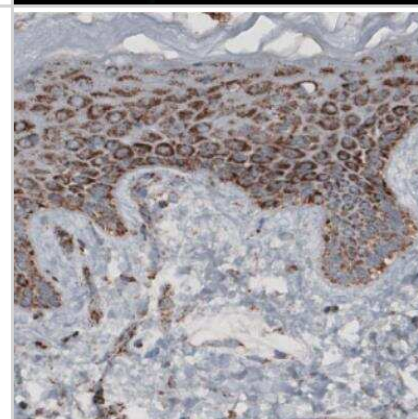
Immunocytochemistry/Immunofluorescence: CS Citrate Synthase Antibody (CL2545) [NBP2-36771] - Staining in MCF7 cell line showing specific mitochondrial staining in green. Microtubule-staining and nuclear probes are visualized in red and blue respectively (where available). Antibody staining is shown in green.



Immunocytochemistry/Immunofluorescence: CS Citrate Synthase Antibody (CL2545) [NBP2-36771] - Staining in U2OS cell line with Anti-CS monoclonal antibody, showing specific mitochondrial staining in green. Microtubule-staining and nuclear probes are visualized in red and blue respectively (where available). Antibody staining is shown in green.

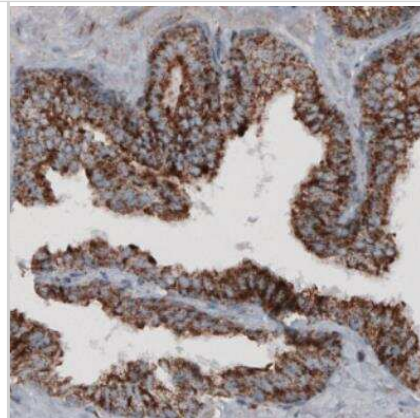


Immunohistochemistry-Paraffin: CS Citrate Synthase Antibody (CL2545) [NBP2-36771] - Staining of human skin shows granular cytoplasmic immunoreactivity in epithelial cells.

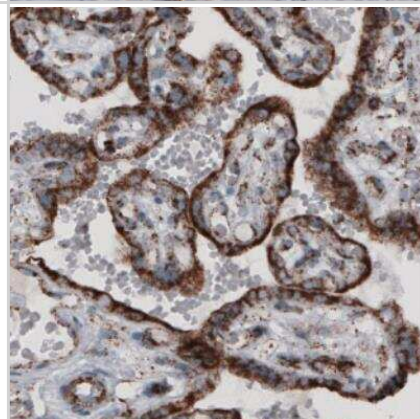




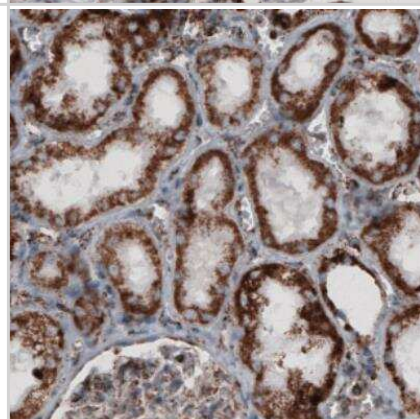
Immunohistochemistry-Paraffin: CS Citrate Synthase Antibody (CL2545) [NBP2-36771] - Staining of human prostate shows strong granular cytoplasmic immunoreactivity in glandular cells.



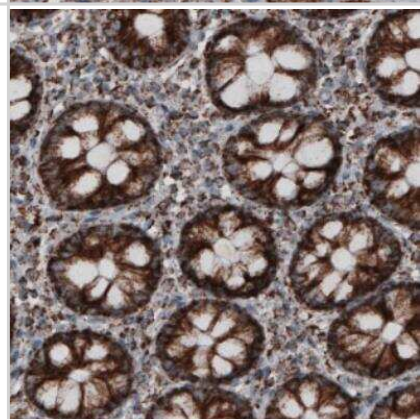
Immunohistochemistry-Paraffin: CS Citrate Synthase Antibody (CL2545) [NBP2-36771] - Staining of human placenta shows strong granular cytoplasmic positivity in the trophoblast.



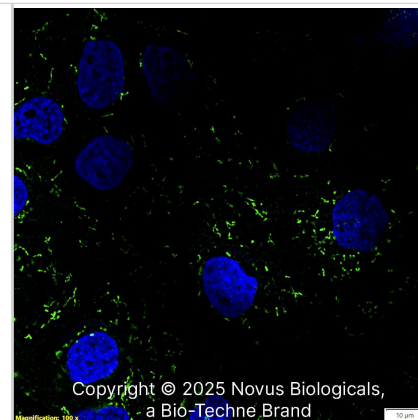
Immunohistochemistry-Paraffin: CS Citrate Synthase Antibody (CL2545) [NBP2-36771] - Staining of human kidney shows strong granular cytoplasmic positivity in renal tubules.



Immunohistochemistry-Paraffin: CS Citrate Synthase Antibody (CL2545) [NBP2-36771] - Staining of human colon shows granular cytoplasmic immunoreactivity in both glandular and lamina propria cells.



CS Citrate Synthase (CL2545) was detected in immersion fixed A431 human skin carcinoma cell line using Mouse anti-CS Citrate Synthase (CL2545) Protein A Purified Monoclonal Antibody conjugated to Alexa Fluor® 488 (Catalog # NBP2-36771) (green) at 2 µg/mL overnight at 4°C. Cells were counterstained with DAPI (blue). Cells were imaged using a 100X objective and digitally deconvolved.





### **Novus Biologicals USA**

10730 E. Briarwood Avenue  
Centennial, CO 80112  
USA  
Phone: 303.730.1950  
Toll Free: 1.888.506.6887  
Fax: 303.730.1966  
nb-customerservice@bio-techne.com

### **Bio-Techne Canada**

21 Canmotor Ave  
Toronto, ON M8Z 4E6  
Canada  
Phone: 905.827.6400  
Toll Free: 855.668.8722  
Fax: 905.827.6402  
canada.inquires@bio-techne.com

### **Bio-Techne Ltd**

19 Barton Lane  
Abingdon Science Park  
Abingdon, OX14 3NB, United Kingdom  
Phone: (44) (0) 1235 529449  
Free Phone: 0800 37 34 15  
Fax: (44) (0) 1235 533420  
info.EMEA@bio-techne.com

### **General Contact Information**

[www.novusbio.com](http://www.novusbio.com)  
Technical Support: nb-technical@bio-techne.com  
Orders: nb-customerservice@bio-techne.com  
General: novus@novusbio.com

### **Products Related to NBP2-36771**

NBP2-36771PEP	CS Citrate Synthase Recombinant Protein Antigen
HAF007	Goat anti-Mouse IgG Secondary Antibody [HRP]
NB720-B	Rabbit anti-Mouse IgG (H+L) Secondary Antibody [Biotin]
NBP1-97005-0.5mg	Mouse IgG1 Isotype Control (MG1)

### **Limitations**

This product is for research use only and is not approved for use in humans or in clinical diagnosis. Primary Antibodies are guaranteed for 1 year from date of receipt.

For more information on our 100% guarantee, please visit [www.novusbio.com/guarantee](http://www.novusbio.com/guarantee)

Earn gift cards/discounts by submitting a review: [www.novusbio.com/reviews/submit/NBP2-36771](http://www.novusbio.com/reviews/submit/NBP2-36771)

Earn gift cards/discounts by submitting a publication using this product:  
[www.novusbio.com/publications](http://www.novusbio.com/publications)

