

Product Datasheet

Zyxin Antibody (CL2502) - BSA Free NBP2-36768

Unit Size: 0.1 ml

Store at 4C short term. Aliquot and store at -20C long term. Avoid freeze-thaw cycles.

www.novusbio.com



technical@novusbio.com

Protocols, Publications, Related Products, Reviews, Research Tools and Images at:
www.novusbio.com/NBP2-36768

Updated 9/9/2025 v.20.1

Earn rewards for product
reviews and publications.

Submit a publication at www.novusbio.com/publications

Submit a review at www.novusbio.com/reviews/destination/NBP2-36768



NBP2-36768

Zyxin Antibody (CL2502) - BSA Free

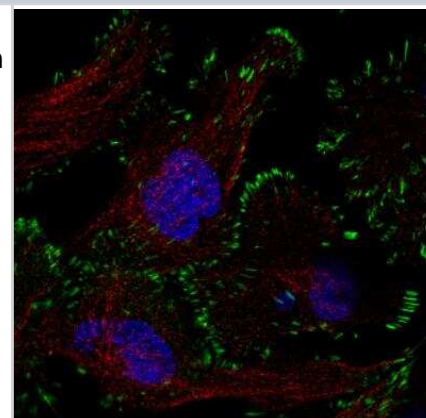
Product Information	
Unit Size	0.1 ml
Concentration	Concentrations vary lot to lot. See vial label for concentration. If unlisted please contact technical services.
Storage	Store at 4C short term. Aliquot and store at -20C long term. Avoid freeze-thaw cycles.
Clonality	Monoclonal
Clone	CL2502
Preservative	0.02% Sodium Azide
Isotype	IgG2b
Purity	Protein A purified
Buffer	PBS (pH 7.2) and 40% Glycerol

Product Description	
Description	Novus Biologicals Mouse Zyxin Antibody (CL2502) - BSA Free (NBP2-36768) is a monoclonal antibody validated for use in IHC and ICC/IF. All Novus Biologicals antibodies are covered by our 100% guarantee.
Host	Mouse
Gene ID	7791
Gene Symbol	ZYX
Species	Human
Reactivity Notes	Expected to cross react based on sequence identity: Mouse (84%), Rat (85%)
Immunogen	This antibody was developed using a recombinant protein derived from Q15942, with the exact immunogen sequence remaining proprietary.

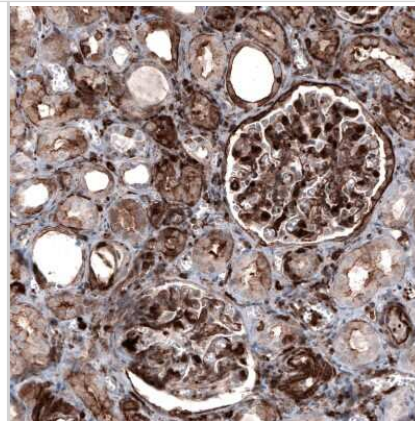
Product Application Details	
Applications	Immunohistochemistry-Paraffin, Immunocytochemistry/ Immunofluorescence, Immunohistochemistry
Recommended Dilutions	Immunohistochemistry 1:200 - 1:500, Immunocytochemistry/ Immunofluorescence 2-10 ug/ml, Immunohistochemistry-Paraffin 1:200 - 1:500
Application Notes	For IHC-Paraffin, HIER pH 6 retrieval is recommended. ICC/IF Fixation Permeabilization: Use PFA/Triton X-100.

Images

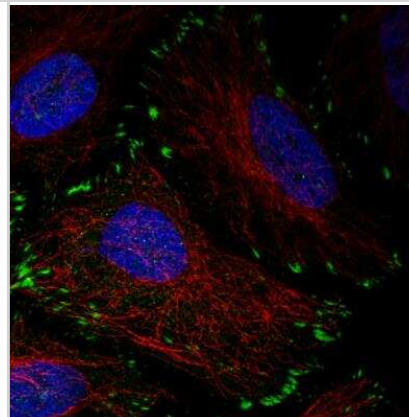
Immunocytochemistry/Immunofluorescence: Zyxin Antibody (CL2502) [NBP2-36768] - Staining in U251 cell line showing distinct focal adhesion staining in green. Microtubule-staining and nuclear probes are visualized in red and blue respectively (where available). Antibody staining is shown in green.



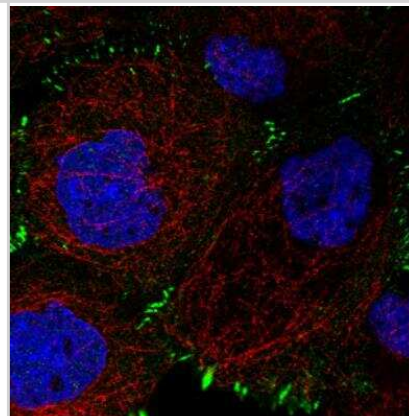
Immunohistochemistry-Paraffin: Zyxin Antibody (CL2502) [NBP2-36768]
 - Staining of human kidney shows moderate to strong cytoplasmic and membranous positivity in cells in glomeruli and in tubules.



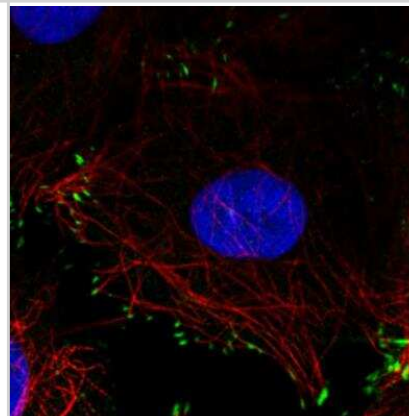
Immunocytochemistry/Immunofluorescence: Zyxin Antibody (CL2502) [NBP2-36768] - Staining in HeLa cell line showing distinct focal adhesion staining in green. Microtubule-staining and nuclear probes are visualized in red and blue respectively (where available). Antibody staining is shown in green.



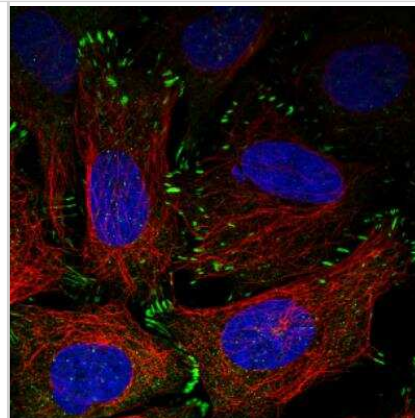
Immunocytochemistry/Immunofluorescence: Zyxin Antibody (CL2502) [NBP2-36768] - Staining of human cell line A431 showing distinct focal adhesion staining in green. Microtubule-staining and nuclear probes are visualized in red and blue respectively (where available). Antibody staining is shown in green.



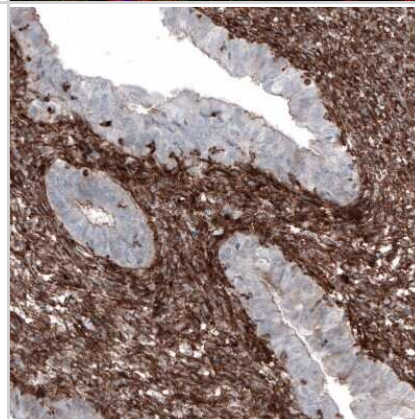
Immunocytochemistry/Immunofluorescence: Zyxin Antibody (CL2502) [NBP2-36768] - Staining in MCF7 cell line showing distinct focal adhesion staining in green. Microtubule-staining and nuclear probes are visualized in red and blue respectively (where available). Antibody staining is shown in green.



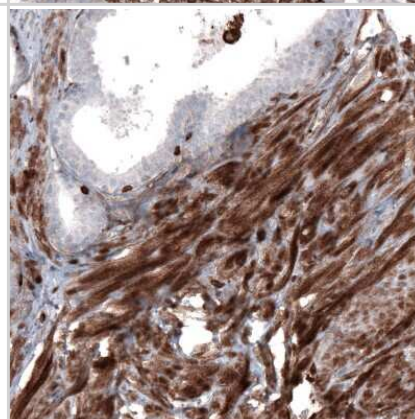
Immunocytochemistry/Immunofluorescence: Zyxin Antibody (CL2502) [NBP2-36768] - Staining in U2OS cell line with Anti-ZYX monoclonal antibody, showing distinct focal adhesion staining in green. Microtubule-staining and nuclear probes are visualized in red and blue respectively (where available). Antibody staining is shown in green.



Immunohistochemistry-Paraffin: Zyxin Antibody (CL2502) [NBP2-36768] - Staining of human endometrium shows strong cytoplasmic positivity in stromal cells.



Immunohistochemistry-Paraffin: Zyxin Antibody (CL2502) [NBP2-36768] - Staining of human prostate shows strong cytoplasmic positivity in smooth muscle cells.



Immunohistochemistry-Paraffin: Zyxin Antibody (CL2502) [NBP2-36768] - Staining of human cerebral cortex shows no positivity in neuropil as expected.





Novus Biologicals USA

10730 E. Briarwood Avenue
Centennial, CO 80112
USA
Phone: 303.730.1950
Toll Free: 1.888.506.6887
Fax: 303.730.1966
nb-customerservice@bio-techne.com

Bio-Techne Canada

21 Canmotor Ave
Toronto, ON M8Z 4E6
Canada
Phone: 905.827.6400
Toll Free: 855.668.8722
Fax: 905.827.6402
canada.inquires@bio-techne.com

Bio-Techne Ltd

19 Barton Lane
Abingdon Science Park
Abingdon, OX14 3NB, United Kingdom
Phone: (44) (0) 1235 529449
Free Phone: 0800 37 34 15
Fax: (44) (0) 1235 533420
info.EMEA@bio-techne.com

General Contact Information

www.novusbio.com
Technical Support: nb-technical@bio-techne.com
Orders: nb-customerservice@bio-techne.com
General: novus@novusbio.com

Products Related to NBP2-36768

NBP2-36768PEP	Zyxin Recombinant Protein Antigen
HAF007	Goat anti-Mouse IgG Secondary Antibody [HRP]
NB720-B	Rabbit anti-Mouse IgG (H+L) Secondary Antibody [Biotin]
NBP2-27231	Mouse IgG2b Isotype Control (MPC-11)

Limitations

This product is for research use only and is not approved for use in humans or in clinical diagnosis. Primary Antibodies are guaranteed for 1 year from date of receipt.

For more information on our 100% guarantee, please visit www.novusbio.com/guarantee

Earn gift cards/discounts by submitting a review: www.novusbio.com/reviews/submit/NBP2-36768

Earn gift cards/discounts by submitting a publication using this product:
www.novusbio.com/publications

