

Product Datasheet

TUFM Antibody (CL2242) - BSA Free NBP2-36751

Unit Size: 0.1 ml

Store at 4C short term. Aliquot and store at -20C long term. Avoid freeze-thaw cycles.

www.novusbio.com



technical@novusbio.com

Publications: 2

Protocols, Publications, Related Products, Reviews, Research Tools and Images at:
www.novusbio.com/NBP2-36751

Updated 2/27/2025 v.20.1

Earn rewards for product
reviews and publications.

Submit a publication at www.novusbio.com/publications

Submit a review at www.novusbio.com/reviews/destination/NBP2-36751



NBP2-36751

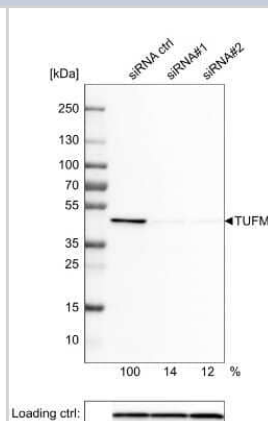
TUFM Antibody (CL2242) - BSA Free

Product Information	
Unit Size	0.1 ml
Concentration	Concentrations vary lot to lot. See vial label for concentration. If unlisted please contact technical services.
Storage	Store at 4C short term. Aliquot and store at -20C long term. Avoid freeze-thaw cycles.
Clonality	Monoclonal
Clone	CL2242
Preservative	0.02% Sodium Azide
Isotype	IgG1
Purity	Protein A purified
Buffer	PBS (pH 7.2) and 40% Glycerol
Product Description	
Host	Mouse
Gene ID	7284
Gene Symbol	TUFM
Species	Human, Rat
Reactivity Notes	Please note that this antibody is reactive to Mouse and derived from the same host, Mouse. Mouse-On-Mouse blocking reagent may be needed for IHC and ICC experiments to reduce high background signal. You can find these reagents under catalog numbers PK-2200-NB and MP-2400-NB. Please contact Technical Support if you have any questions. Rat reactivity reported in scientific literature (PMID:31801089).
Immunogen	This antibody was developed using a recombinant protein derived from P49411, with the exact immunogen sequence remaining proprietary.
Product Application Details	
Applications	Western Blot, Immunocytochemistry/ Immunofluorescence, Immunohistochemistry, Immunohistochemistry-Paraffin, Immunoprecipitation, Knockdown Validated
Recommended Dilutions	Western Blot 1 ug/ml, Immunohistochemistry 1:1000 - 1:2500, Immunocytochemistry/ Immunofluorescence 2-10 ug/ml, Immunoprecipitation, Immunohistochemistry-Paraffin 1:1000 - 1:2500, Knockdown Validated
Application Notes	For IHC-Paraffin, HIER pH 6 retrieval is recommended. ICC/IF Fixation Permeabilization: Use PFA/Triton X-100. Use in Immunoprecipitation reported in scientific literature (PMID:31801089).

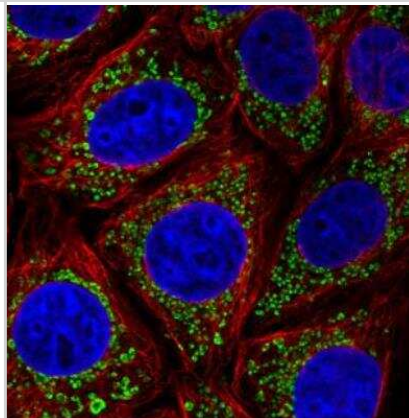


Images

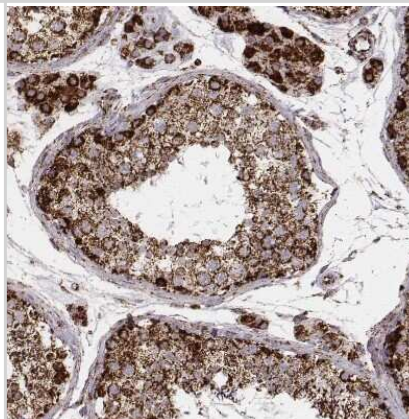
Western Blot: TUFM Antibody (CL2242) [NBP2-36751] - Analysis in U-251MG cells transfected with control siRNA, target specific siRNA probe #1 and #2, using Anti-TUFM antibody. Remaining relative intensity is presented. Loading control: Anti-PPIB.



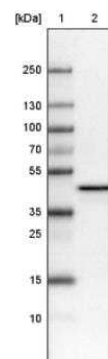
Immunocytochemistry/Immunofluorescence: TUFM Antibody (CL2242) [NBP2-36751] - Staining in MCF7 cell line with Anti-TUFM monoclonal antibody, showing distinct mitochondrial staining in green. Microtubule- and nuclear probes are visualized in red and blue respectively (where available). Antibody staining is shown in green.



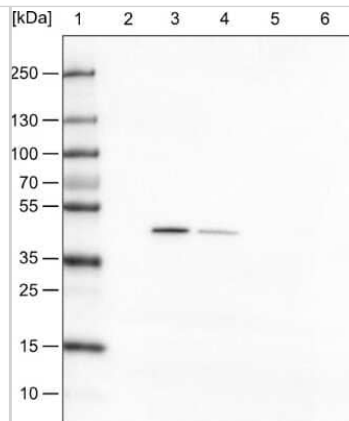
Immunohistochemistry-Paraffin: TUFM Antibody (CL2242) [NBP2-36751] - Staining of human testis shows strong granular cytoplasmic positivity in cells in seminiferous ducts and in Leydig cells.



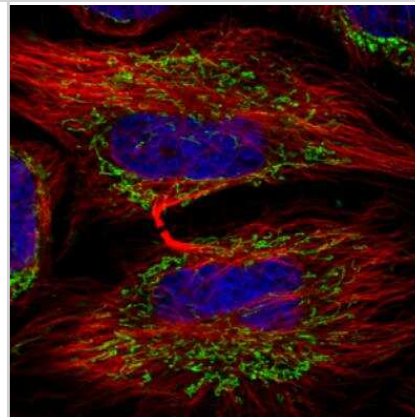
Western Blot: TUFM Antibody (CL2242) [NBP2-36751] - Lane 1: Marker [kDa]. Lane 2: Human cell line U-251 MG



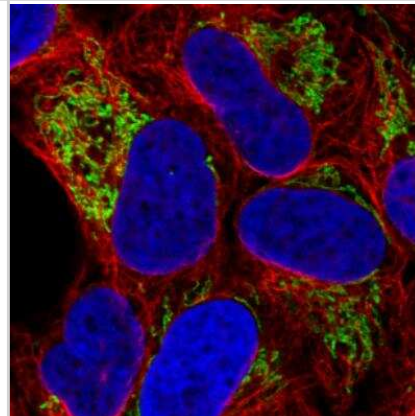
Western Blot: TUFM Antibody (CL2242) [NBP2-36751] - Lane 1: Marker [kDa], Lane 2: Human cell line HeLa cytoplasmic fraction , Lane 3: Human cell line HeLa membrane fraction , Lane 4: Human cell line HeLa nuclear fraction , Lane 5: Human cell line HeLa chromatin fraction , Lane 6: Human cell line HeLa cytos



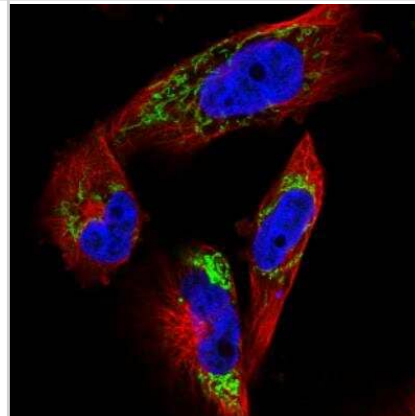
Immunocytochemistry/Immunofluorescence: TUFM Antibody (CL2242) [NBP2-36751] - Staining in HeLa cell line showing distinct mitochondrial staining in green. Microtubule-staining and nuclear probes are visualized in red and blue respectively (where available). Antibody staining is shown in green.



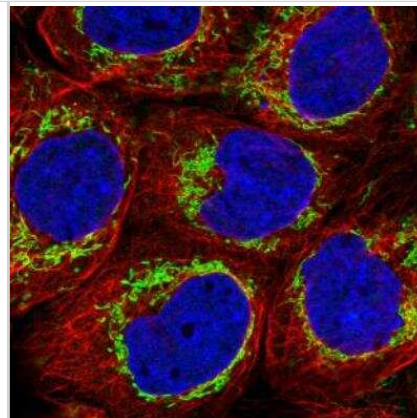
Immunocytochemistry/Immunofluorescence: TUFM Antibody (CL2242) [NBP2-36751] - Staining in U2OS cell line with Anti-TUFM monoclonal antibody, showing distinct mitochondrial staining in green. Microtubule-staining and nuclear probes are visualized in red and blue respectively (where available). Antibody staining is shown in green.



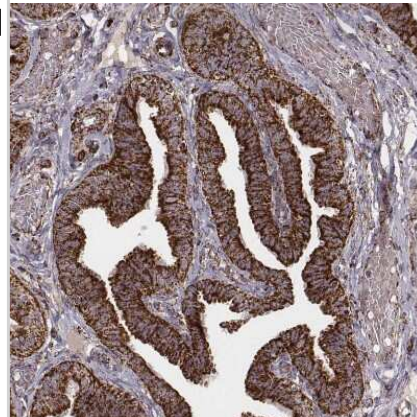
Immunocytochemistry/Immunofluorescence: TUFM Antibody (CL2242) [NBP2-36751] - Staining in U251 cell line showing distinct mitochondrial staining in green. Microtubule-staining and nuclear probes are visualized in red and blue respectively (where available). Antibody staining is shown in green.



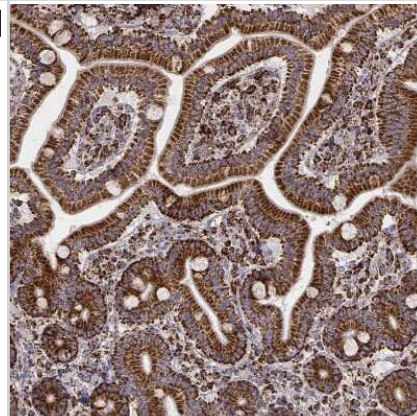
Immunocytochemistry/Immunofluorescence: TUFM Antibody (CL2242) [NBP2-36751] - Staining in A431 cell line with Anti-TUFM monoclonal antibody, showing distinct mitochondrial staining in green. Microtubule- and nuclear probes are visualized in red and blue respectively (where available). Antibody staining is shown in green.



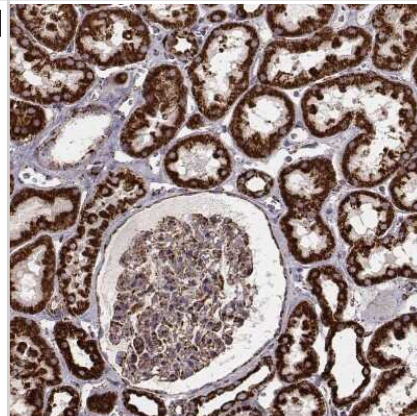
Immunohistochemistry-Paraffin: TUFM Antibody (CL2242) [NBP2-36751] - Staining of human fallopian tube shows strong granular cytoplasmic positivity in glandular cells.



Immunohistochemistry-Paraffin: TUFM Antibody (CL2242) [NBP2-36751] - Staining of human duodenum shows strong granular cytoplasmic positivity in glandular cells.



Immunohistochemistry-Paraffin: TUFM Antibody (CL2242) [NBP2-36751] - Staining of human kidney shows strong granular cytoplasmic positivity in cells in tubules and moderate staining in glomerular cells.



Publications

Meyers AK, Wang Z, Han W et al. Pyruvate dehydrogenase kinase supports macrophage NLRP3 inflammasome activation during acute inflammation Cell Reports 2023-01-31 [PMID: 36640341]

Wall CE, Rose CM, Adrian M PPEF2 Opposes PINK1-Mediated Mitochondrial Quality Control by Dephosphorylating Ubiquitin Cell Rep 2019-12-03 [PMID: 31801089] (KD, IP, WB, Rat, Human)



Novus Biologicals USA

10730 E. Briarwood Avenue
Centennial, CO 80112
USA

Phone: 303.730.1950

Toll Free: 1.888.506.6887

Fax: 303.730.1966

nb-customerservice@bio-techne.com

Bio-Techne Canada

21 Canmotor Ave
Toronto, ON M8Z 4E6
Canada

Phone: 905.827.6400

Toll Free: 855.668.8722

Fax: 905.827.6402

canada.inquires@bio-techne.com

Bio-Techne Ltd

19 Barton Lane
Abingdon Science Park
Abingdon, OX14 3NB, United Kingdom

Phone: (44) (0) 1235 529449

Free Phone: 0800 37 34 15

Fax: (44) (0) 1235 533420

info.EMEA@bio-techne.com

General Contact Information

www.novusbio.com

Technical Support: nb-technical@bio-techne.com

Orders: nb-customerservice@bio-techne.com

General: novus@novusbio.com

Products Related to NBP2-36751

NBP2-36751PEP	TUFM Recombinant Protein Antigen
HAF007	Goat anti-Mouse IgG Secondary Antibody [HRP]
NB720-B	Rabbit anti-Mouse IgG (H+L) Secondary Antibody [Biotin]
NBP1-97005-0.5mg	Mouse IgG1 Isotype Control (MG1)

Limitations

This product is for research use only and is not approved for use in humans or in clinical diagnosis. Primary Antibodies are guaranteed for 1 year from date of receipt.

For more information on our 100% guarantee, please visit www.novusbio.com/guarantee

Earn gift cards/discounts by submitting a review: www.novusbio.com/reviews/submit/NBP2-36751

Earn gift cards/discounts by submitting a publication using this product:
www.novusbio.com/publications

