

# Product Datasheet

## Integrin beta 1/CD29 Antibody (P4C10) [Alexa Fluor® 488] NBP2-36561AF488

Unit Size: 0.1 ml

Store at 4C in the dark.

[www.novusbio.com](http://www.novusbio.com)



[technical@novusbio.com](mailto:technical@novusbio.com)

Protocols, Publications, Related Products, Reviews, Research Tools and Images at:  
[www.novusbio.com/NBP2-36561AF488](http://www.novusbio.com/NBP2-36561AF488)

Updated 10/23/2024 v.20.1

Earn rewards for product  
reviews and publications.

Submit a publication at [www.novusbio.com/publications](http://www.novusbio.com/publications)

Submit a review at [www.novusbio.com/reviews/destination/NBP2-36561AF488](http://www.novusbio.com/reviews/destination/NBP2-36561AF488)



**NBP2-36561AF488**

Integrin beta 1/CD29 Antibody (P4C10) [Alexa Fluor® 488]

Product Information	
Unit Size	0.1 ml
Concentration	Please see the vial label for concentration. If unlisted please contact technical services.
Storage	Store at 4C in the dark.
Clonality	Monoclonal
Clone	P4C10
Preservative	0.05% Sodium Azide
Isotype	IgG1
Conjugate	Alexa Fluor 488
Purity	Protein G purified
Buffer	50mM Sodium Borate

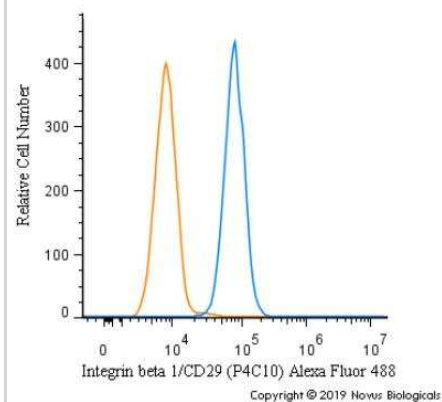
Product Description	
Host	Mouse
Gene ID	3688
Gene Symbol	ITGB1
Species	Human, Mouse
Reactivity Notes	Mouse reactivity reported in scientific literature (PMID:32803867). Mouse reactivity reported in scientific literature (PMID: 27550917). .
Specificity/Sensitivity	Epitope is not trypsin sensitive.
Immunogen	HT1080 cells human fibrosarcoma
Notes	Alexa Fluor (R) products are provided under an intellectual property license from Life Technologies Corporation. The purchase of this product conveys to the buyer the non-transferable right to use the purchased product and components of the product only in research conducted by the buyer (whether the buyer is an academic or for-profit entity). The sale of this product is expressly conditioned on the buyer not using the product or its components, or any materials made using the product or its components, in any activity to generate revenue, which may include, but is not limited to use of the product or its components: (i) in manufacturing; (ii) to provide a service, information, or data in return for payment; (iii) for therapeutic, diagnostic or prophylactic purposes; or (iv) for resale, regardless of whether they are resold for use in research. For information on purchasing a license to this product for purposes other than as described above, contact Life Technologies Corporation, 5791 Van Allen Way, Carlsbad, CA 92008 USA or <a href="mailto:outlicensing@lifetech.com">outlicensing@lifetech.com</a> . This conjugate is made on demand. Actual recovery may vary from the stated volume of this product. The volume will be greater than or equal to the unit size stated on the datasheet.

Product Application Details	
Applications	Western Blot, ELISA, Flow Cytometry, Immunocytochemistry/ Immunofluorescence, Immunohistochemistry, Immunohistochemistry-Frozen, Immunoprecipitation, Block/Neutralize
Recommended Dilutions	Western Blot, Flow Cytometry, ELISA, Immunohistochemistry, Immunocytochemistry/ Immunofluorescence, Immunoprecipitation, Immunohistochemistry-Frozen, Block/Neutralize
Application Notes	Optimal dilution of this antibody should be experimentally determined.



## Images

Flow Cytometry: Integrin beta 1/CD29 Antibody (P4C10) [Alexa Fluor® 488] [NBP2-36561AF488] - A surface stain was performed on HeLa cells with Integrin beta 1/CD29 [P4C10] Antibody NBP2-36561AF488 (blue) and a matched isotype control (orange). Cells were incubated in an antibody dilution of 5 ug/mL for 20 minutes at room temperature. Both antibodies were conjugated to Alexa Fluor 488.





### **Novus Biologicals USA**

10730 E. Briarwood Avenue  
Centennial, CO 80112  
USA  
Phone: 303.730.1950  
Toll Free: 1.888.506.6887  
Fax: 303.730.1966  
nb-customerservice@bio-techne.com

### **Bio-Techne Canada**

21 Canmotor Ave  
Toronto, ON M8Z 4E6  
Canada  
Phone: 905.827.6400  
Toll Free: 855.668.8722  
Fax: 905.827.6402  
canada.inquires@bio-techne.com

### **Bio-Techne Ltd**

19 Barton Lane  
Abingdon Science Park  
Abingdon, OX14 3NB, United Kingdom  
Phone: (44) (0) 1235 529449  
Free Phone: 0800 37 34 15  
Fax: (44) (0) 1235 533420  
info.EMEA@bio-techne.com

### **General Contact Information**

www.novusbio.com  
Technical Support: nb-technical@bio-techne.com  
Orders: nb-customerservice@bio-techne.com  
General: novus@novusbio.com

### **Products Related to NBP2-36561AF488**

---

DDXCM01A488	Mouse IgG1 Isotype Control [Alexa Fluor® 488]
NBP2-36561B	Integrin beta 1/CD29 Antibody (P4C10) [Biotin]
NBP2-59570-50ug	Recombinant Human Integrin beta 1/CD29 His Protein
210-TA-005	TNF-alpha [Unconjugated]

---

### **Limitations**

This product is for research use only and is not approved for use in humans or in clinical diagnosis. Primary Antibodies are guaranteed for 1 year from date of receipt.

For more information on our 100% guarantee, please visit [www.novusbio.com/guarantee](http://www.novusbio.com/guarantee)

Earn gift cards/discounts by submitting a review: [www.novusbio.com/reviews/submit/NBP2-36561AF488](http://www.novusbio.com/reviews/submit/NBP2-36561AF488)

Earn gift cards/discounts by submitting a publication using this product:  
[www.novusbio.com/publications](http://www.novusbio.com/publications)

