

# Product Datasheet

## HeLa Hypoxic / Normoxic Cell Lysate NBP2-36452

Unit Size: 2 Vials

Aliquot and store at -20C or -80C. Avoid freeze-thaw cycles.

[www.novusbio.com](http://www.novusbio.com)



[technical@novusbio.com](mailto:technical@novusbio.com)

### Publications: 1

Protocols, Publications, Related Products, Reviews, Research Tools and Images at:  
[www.novusbio.com/NBP2-36452](http://www.novusbio.com/NBP2-36452)

Updated 10/23/2024 v.20.1

Earn rewards for product  
reviews and publications.

Submit a publication at [www.novusbio.com/publications](http://www.novusbio.com/publications)

Submit a review at [www.novusbio.com/reviews/destination/NBP2-36452](http://www.novusbio.com/reviews/destination/NBP2-36452)



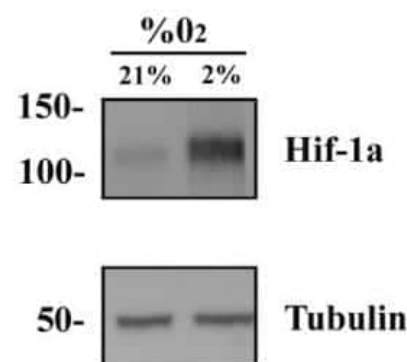
**NBP2-36452**

## HeLa Hypoxic / Normoxic Cell Lysate

Product Information	
Unit Size	2 Vials
Concentration	1.0 mg/ml
Storage	Aliquot and store at -20C or -80C. Avoid freeze-thaw cycles.
Buffer	The protein lysate is prepared in 1x Laemmli sample buffer with BME. Boiling before loading is not necessary.
Product Description	
Species	Human
Preparation Method	HeLa cells are cultured using standard media condition until semi-confluent (70-80%). The cells are grown under true hypoxic conditions where the oxygen level in the incubator is reduced to 2% for 4 hours to accumulate Hif-1a within the cells. The cells are then washed in PBS and lysed into 1X Laemmli sample buffer with BME. The lysate is sonicated and tested by Western blot for reactivity to Hif-1a using a polyclonal anti-Hif-1a antibody (NB100-134). Tubulin reactivity of each lysate is shown as a loading control.
Kit Components	0.1 ml Hela hypoxic whole cell lysate, 0.1 ml Hela normoxic whole cell lysate
Lysate Type	Cell
Lysate Tissue	Cervix
Lysate Subcellular Fraction	Hypoxic / Normoxic
Product Application Details	
Applications	SDS-Page
Recommended Dilutions	SDS-Page 10 ul / lane
Application Notes	HeLa Whole cell lysate is provided as a Western blot positive control for Hif-1 research. The lysates are provided as a set of treated and untreated samples. Use 10 ul per lane for a standard mini-gel blot (approx. 1 mg/ml).

**Images**

Western Blot: HeLa Hypoxic / Normoxic Tissue Lysate [NBP2-36452] - Western blot analysis of HIF-1 alpha antibody (NB100-134) in HeLa hypoxic and normoxic lysates (NBP2-36452). Tubulin loading control is shown below.

**Publications**

Mikkelsen ML, Marcussen N, Rabjerg M Surgically Induced Ischemia has no Impact on Protein Expression Levels of HIF-1 alpha and Related Biomarkers in Renal Cell Carcinoma APMIS : acta pathologica, microbiologica, et immunologica Scandinavica 2021-05-04 [PMID: 33948984]



### **Novus Biologicals USA**

10730 E. Briarwood Avenue  
Centennial, CO 80112  
USA  
Phone: 303.730.1950  
Toll Free: 1.888.506.6887  
Fax: 303.730.1966  
nb-customerservice@bio-techne.com

### **Bio-Techne Canada**

21 Canmotor Ave  
Toronto, ON M8Z 4E6  
Canada  
Phone: 905.827.6400  
Toll Free: 855.668.8722  
Fax: 905.827.6402  
canada.inquires@bio-techne.com

### **Bio-Techne Ltd**

19 Barton Lane  
Abingdon Science Park  
Abingdon, OX14 3NB, United Kingdom  
Phone: (44) (0) 1235 529449  
Free Phone: 0800 37 34 15  
Fax: (44) (0) 1235 533420  
info.EMEA@bio-techne.com

### **General Contact Information**

www.novusbio.com  
Technical Support: nb-technical@bio-techne.com  
Orders: nb-customerservice@bio-techne.com  
General: novus@novusbio.com

### **Limitations**

This product is for research use only and is not approved for use in humans or in clinical diagnosis. Lysates are guaranteed for 6 months from date of receipt.

For more information on our 100% guarantee, please visit [www.novusbio.com/guarantee](http://www.novusbio.com/guarantee)

Earn gift cards/discounts by submitting a review: [www.novusbio.com/reviews/submit/NBP2-36452](http://www.novusbio.com/reviews/submit/NBP2-36452)

Earn gift cards/discounts by submitting a publication using this product:  
[www.novusbio.com/publications](http://www.novusbio.com/publications)

