

Product Datasheet

HepG2 CoCl₂ treated/Untreated Cell Lysate NBP2-36451

Unit Size: 2 Vials

Aliquot and store at -20C or -80C. Avoid freeze-thaw cycles.

www.novusbio.com



technical@novusbio.com

Protocols, Publications, Related Products, Reviews, Research Tools and Images at:
www.novusbio.com/NBP2-36451

Updated 10/23/2024 v.20.1

Earn rewards for product
reviews and publications.

Submit a publication at www.novusbio.com/publications

Submit a review at www.novusbio.com/reviews/destination/NBP2-36451

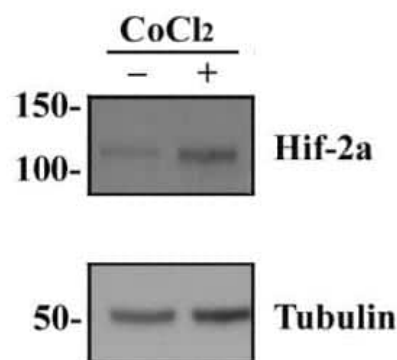


NBP2-36451HepG2 CoCl₂ treated/Untreated Cell Lysate

Product Information	
Unit Size	2 Vials
Concentration	1.0 mg/ml
Storage	Aliquot and store at -20C or -80C. Avoid freeze-thaw cycles.
Buffer	The protein lysate is prepared in 1x Laemmli sample buffer with BME. Boiling before loading is not necessary.
Product Description	
Species	Human
Preparation Method	HepG2 cells are cultured using standard media condition until semi-confluent (70-80%). The cells are then treated with or without 100 uM CoCl ₂ for 4 hours. The cells are then washed in PBS and lysed into 1X Laemmli sample buffer with betaME. The lysate is sonicated and tested by Western blot for reactivity to Hif-2a using a polyclonal anti-Hif-2a antibody (NB100-122). Tubulin reactivity of each lysate is shown as a loading control.
Kit Components	0.1 ml Cobalt Chloride treated HepG2 whole cell lysate, 0.1 ml normoxic HepG2 whole cell lysate
Lysate Type	Cell
Lysate Tissue	Liver
Lysate Subcellular Fraction	CoCl ₂ treated/Untreated
Product Application Details	
Applications	SDS-Page
Recommended Dilutions	SDS-Page
Application Notes	HepG2 Whole cell lysate is provided as a Western blot positive control for Hif-2a research. The lysates are provided as a set of treated and untreated samples. Use 10 ul per lane for a standard mini-gel blot (approx. 1 mg/ml). Boiling before loading is not necessary.

Images

Western Blot: HepG2 Hypoxic Simulated / Normoxic Tissue Lysate [NBP2-36451] - Western blot analysis of HIF-2 alpha antibody (NB100-122) in HepG2 cobalt chloride treated and normoxic lysates (NBP2-36451). Tubulin loading control is shown below.





Novus Biologicals USA

10730 E. Briarwood Avenue
Centennial, CO 80112
USA
Phone: 303.730.1950
Toll Free: 1.888.506.6887
Fax: 303.730.1966
nb-customerservice@bio-techne.com

Bio-Techne Canada

21 Canmotor Ave
Toronto, ON M8Z 4E6
Canada
Phone: 905.827.6400
Toll Free: 855.668.8722
Fax: 905.827.6402
canada.inquires@bio-techne.com

Bio-Techne Ltd

19 Barton Lane
Abingdon Science Park
Abingdon, OX14 3NB, United Kingdom
Phone: (44) (0) 1235 529449
Free Phone: 0800 37 34 15
Fax: (44) (0) 1235 533420
info.EMEA@bio-techne.com

General Contact Information

www.novusbio.com
Technical Support: nb-technical@bio-techne.com
Orders: nb-customerservice@bio-techne.com
General: novus@novusbio.com

Limitations

This product is for research use only and is not approved for use in humans or in clinical diagnosis. Lysates are guaranteed for 6 months from date of receipt.

For more information on our 100% guarantee, please visit www.novusbio.com/guarantee

Earn gift cards/discounts by submitting a review: www.novusbio.com/reviews/submit/NBP2-36451

Earn gift cards/discounts by submitting a publication using this product:
www.novusbio.com/publications

